



NC21432 – A6 PT Rejections



Group 1 is a small cluster of linear indications, longest is .5". Cluster is located in the radius below the VPI groove on the datum D side between T holes 43 and 45.

Group 2 is a cluster with the longest indication being a .6" linear. Located between T holes 40 and 43.

Group 3 has a 1" linear as its longest indication. This cluster is located between T holes 36 and 40.



NC21432 – A6 PT Rejections



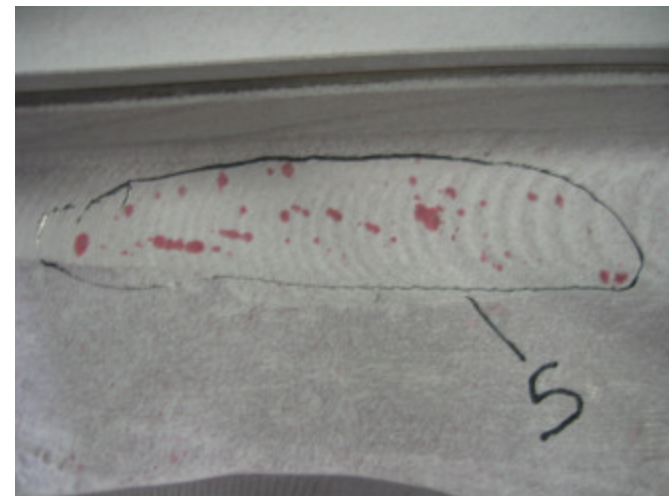
Indication 4 is a 1.5" linear
located on the poloidal break
(datum D side).



NC21432 – A6 PT Rejections



Group 5 is a cluster of indications on the datum D side in radius below VPI groove between T holes 8 and 11. The longest indication is a .7" linear.



NC21432 – A6 PT Rejections



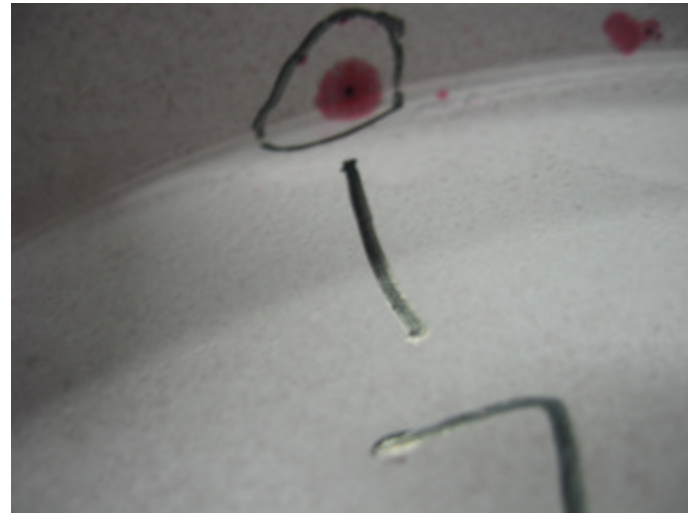
Indication 6 is a .400" linear located in large cutout of datum D flange between flange holes 16 and 17.



NC21432 – A6 PT Rejections



Indication 7 is a .15" rounded
between T holes 77 and 78 on the
datum D side.



NC21432 – A6 PT Rejections

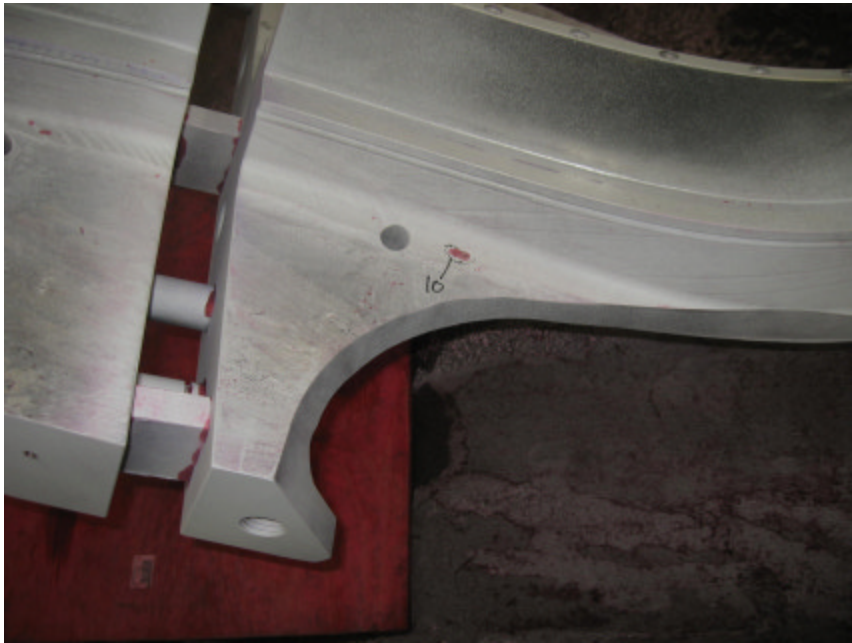


Indication 8 is a 1" linear and Indication 9 is a .300" linear, both are located on the perimeter of the datum E flange.



Indications are on either side of foot between E flange holes 18 and 19.

NC21432 – A6 PT Rejections



Indication 10 is a .700" linear located in the radius below the VPI groove on the datum E side between T holes 13 and 14.



NC21432 – A6 PT Rejections



Group 11 is a cluster of indications on the small outer wing surface on the datum E side. Largest indication is a .700" linear.



NC21432 – A6 PT Rejections



Indications 12, 13 and 14 are a group of indications located on the large cutout on the datum D side between flange holes 4 and 5.

Indication 12 is a .300" linear

Indication 13 is a .700" linear

Indication 14 is a .900" linear

