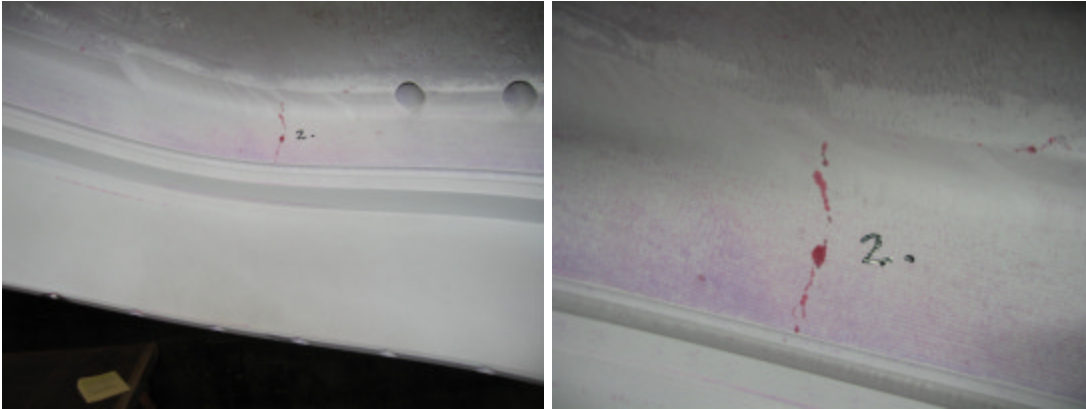


## PT Inspection Results of B3 – NC20871

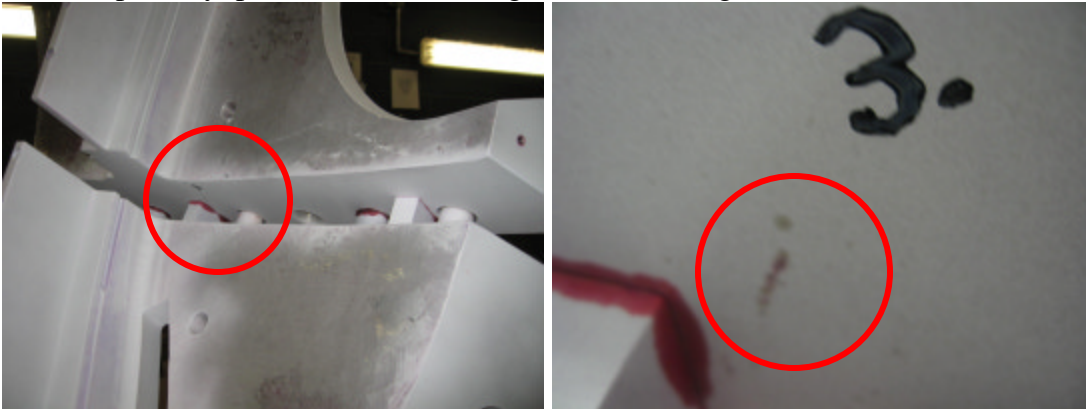
1. Line porosity, outer flange "E" side, 2.5" long.



2. Line porosity, "D" side between holes 25-26 in the "T", 2.30" long.



3. Line porosity, poloidal break, mating face, .700" long.



## PT Inspection Results of B3 – NC20871

4. Linear indication w/shrink cluster, "E" side wing O.D. .700" long.

