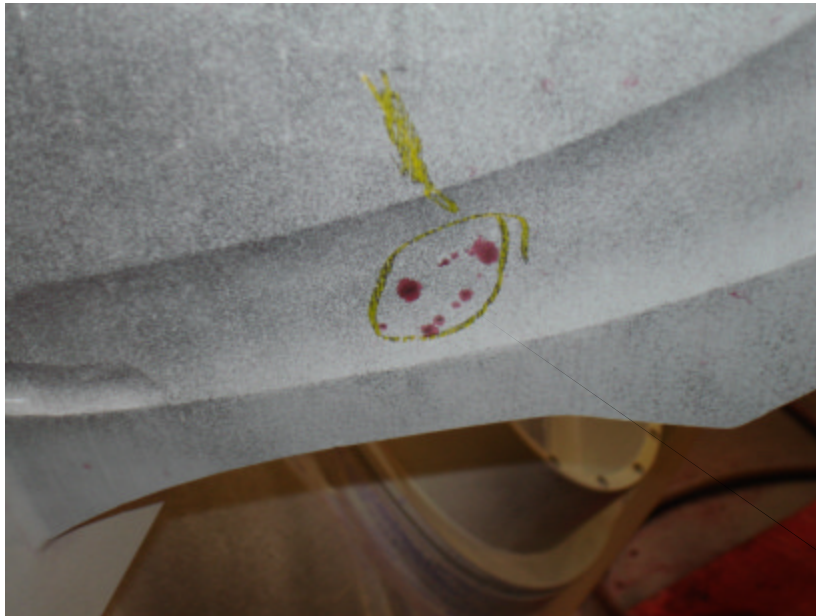
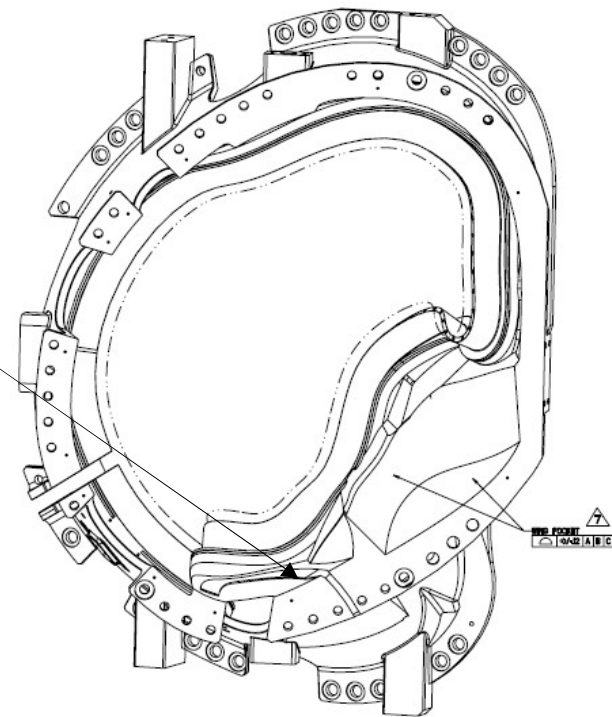




NC21015 – B4 PT Rejections

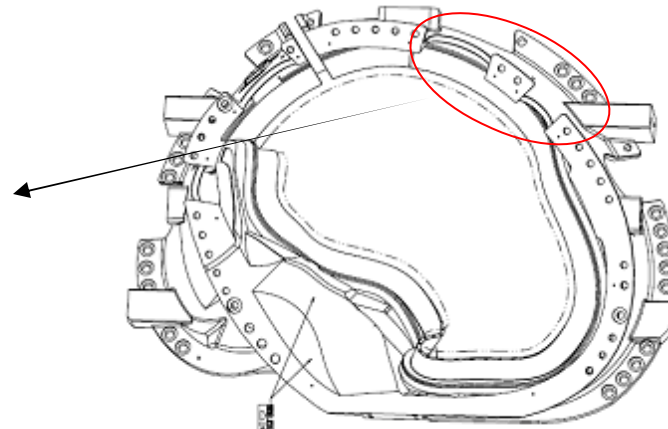
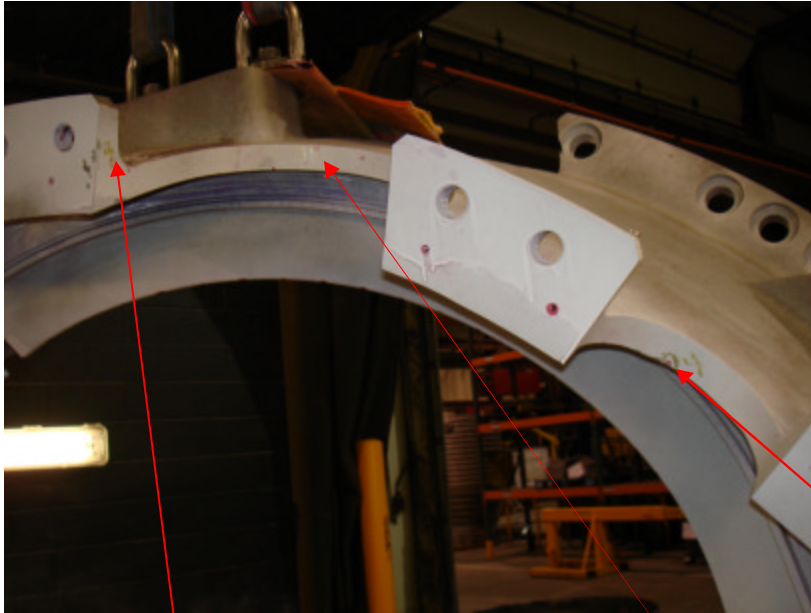


1) Cluster on indications on datum E wing. Longest is 2.5".





NC21015 – B4 PT Rejections



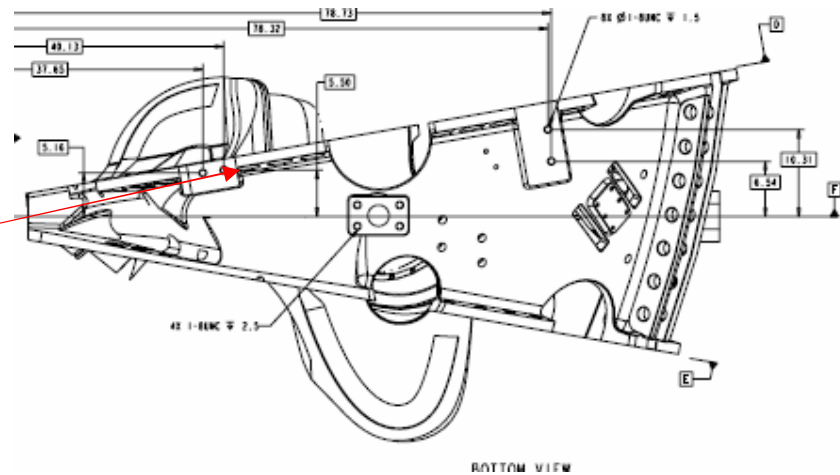
3 Rejections in datum E cutouts

- 2) .25" rounded inclusion
- 3) .20" rounded inclusion
- 4) .425" rounded inclusion





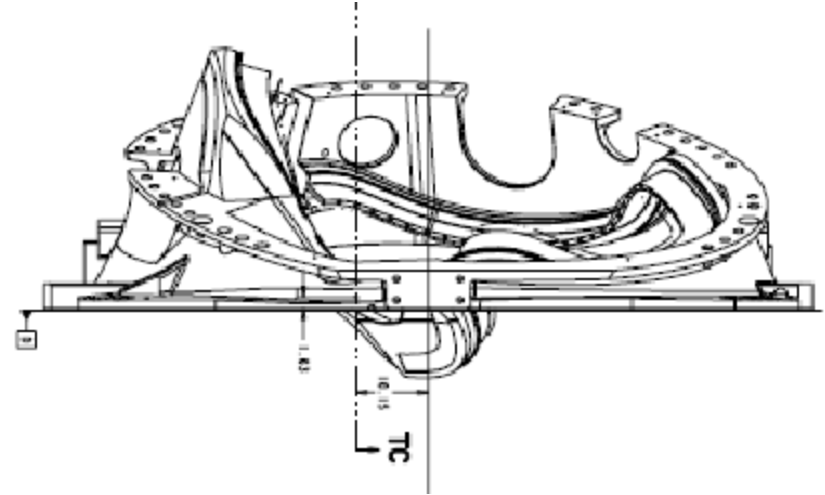
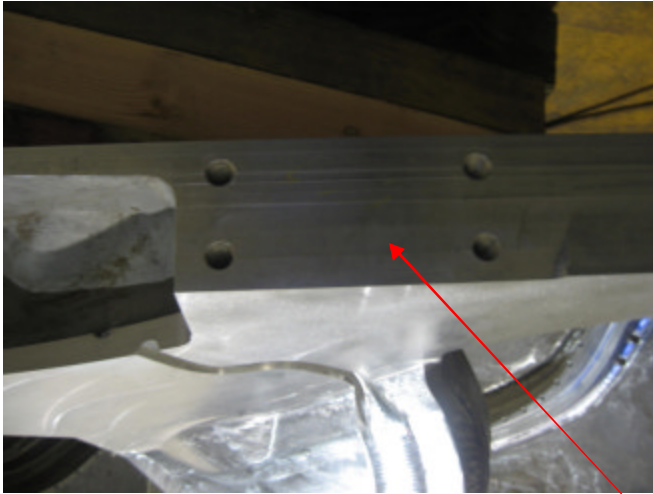
NC21015 – B4 PT Rejections



5) .400" linear on datum D outer perimeter of flange as shown above.



NC21015 – B4 PT Rejections



4 indications on pad between datums D and E as shown above. Although not clearly shown by picture, all indications are on this surface.

6) .400" linear

7) .325" linear

8) .300" linear

9) .350" linear