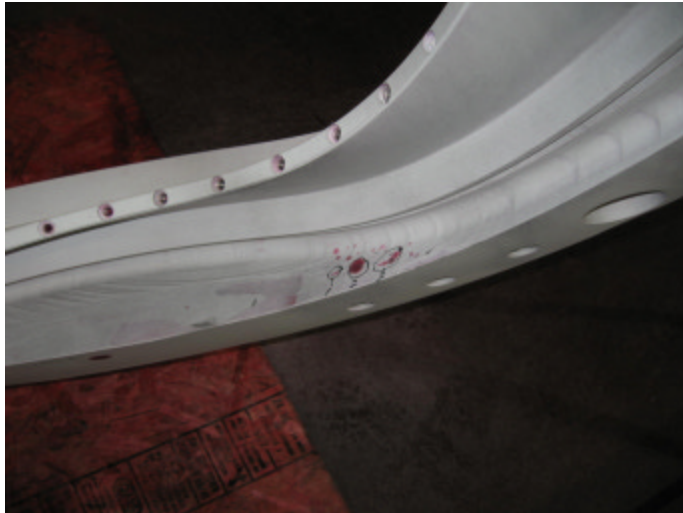




## NC21847 – B6 PT Rejections



Indications 1 thru 3 are all located on the Datum E side in the radius below the VPI groove between T holes 37 and 38.

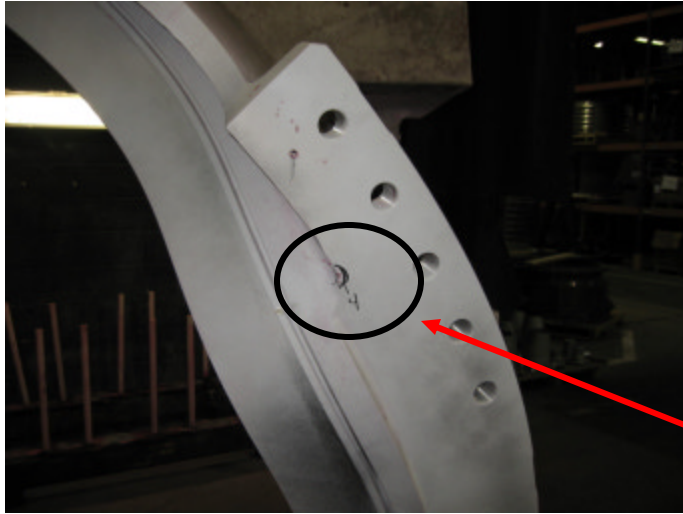
Indication 1 is a .400" linear

Indication 2 is a .300" linear

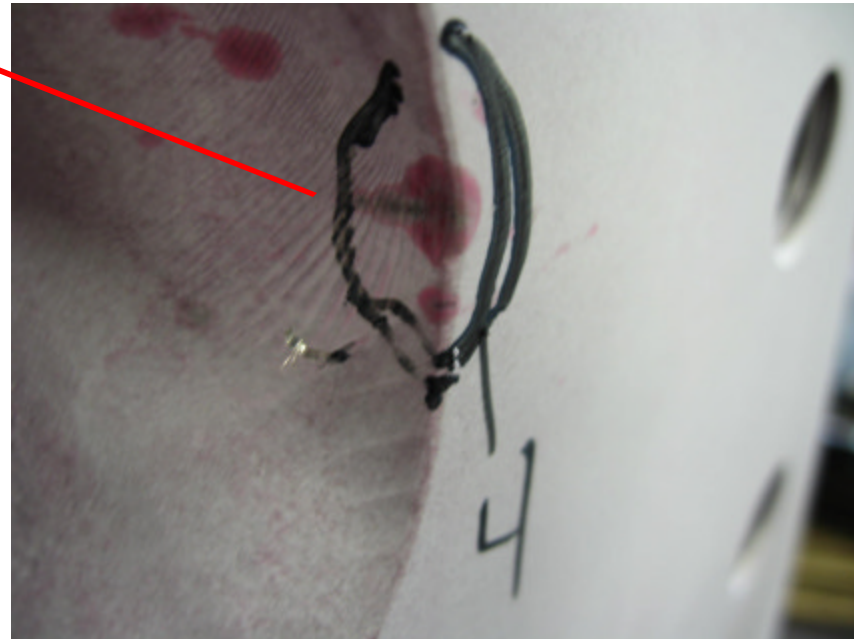
Indication 3 is a 1.3" linear cluster



## NC21847 – B6 PT Rejections

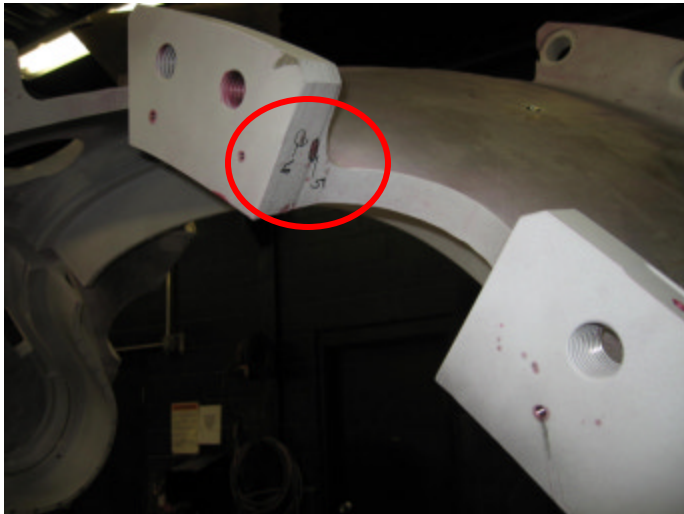


Indication 4 is a .500" linear that starts on the corner of the datum E flange and extends into the inner cast area. This indication is adjacent to datum E flange hole #9.





## NC21847 – B6 PT Rejections



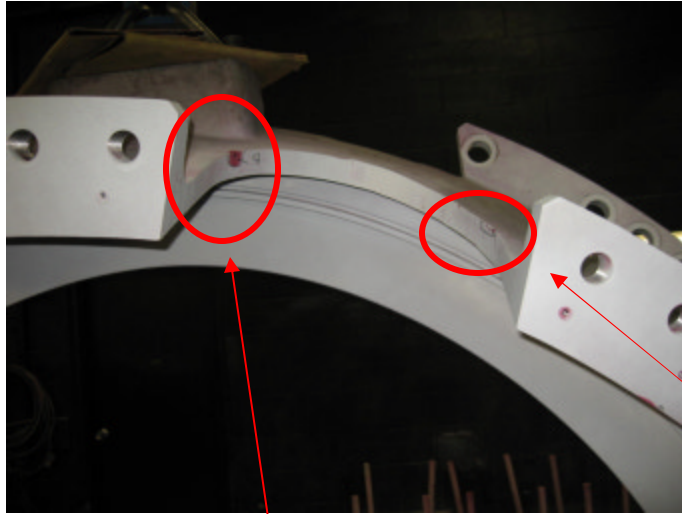
Indications 5 & 6 are on the inside of the cutout that is located between E flange holes 10 & 11.

Indication 5 is a .700" linear and indication 6 is a .400" linear.





## NC21847 – B6 PT Rejections



Indications 7 & 8 are on the inside of the cutout that is located between E flange holes 12 & 13.

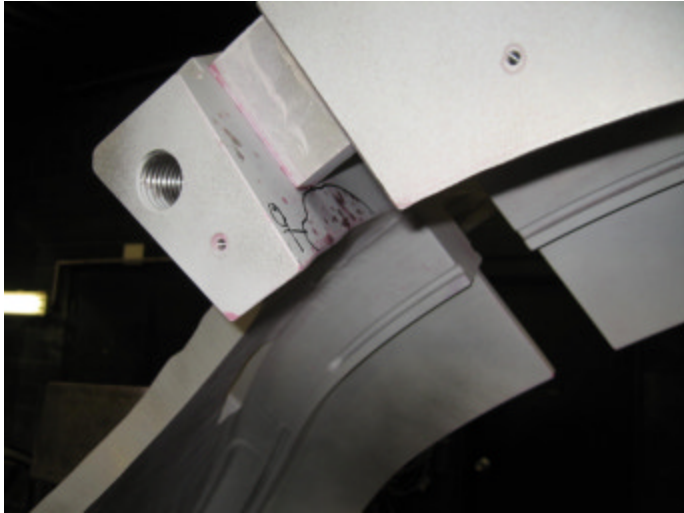
Indication 7 is a cluster of linear indications, the longest being .300”.

Indication 8 is indication is a .300” rounded inclusion.





## NC21847 – B6 PT Rejections



Indication 9 is a cluster of linear indications on the face of the poloidal break on the datum E side of the casting. The longest indication is approximately .400”.

