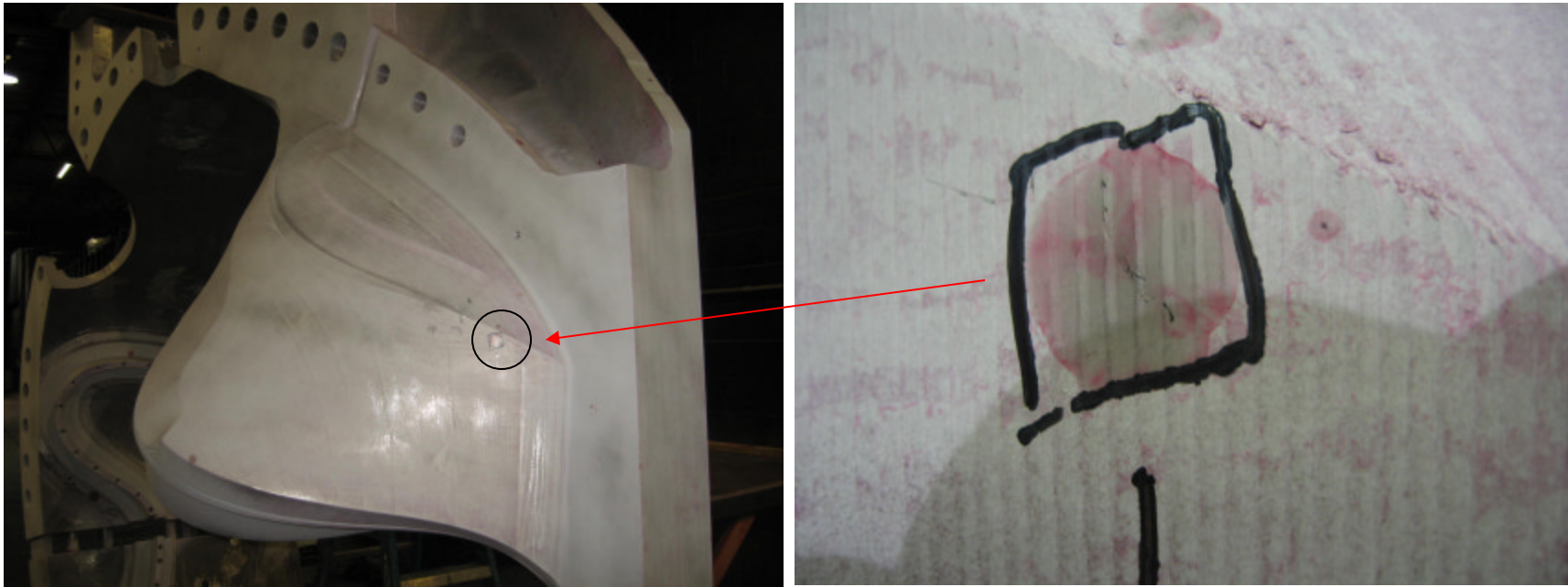


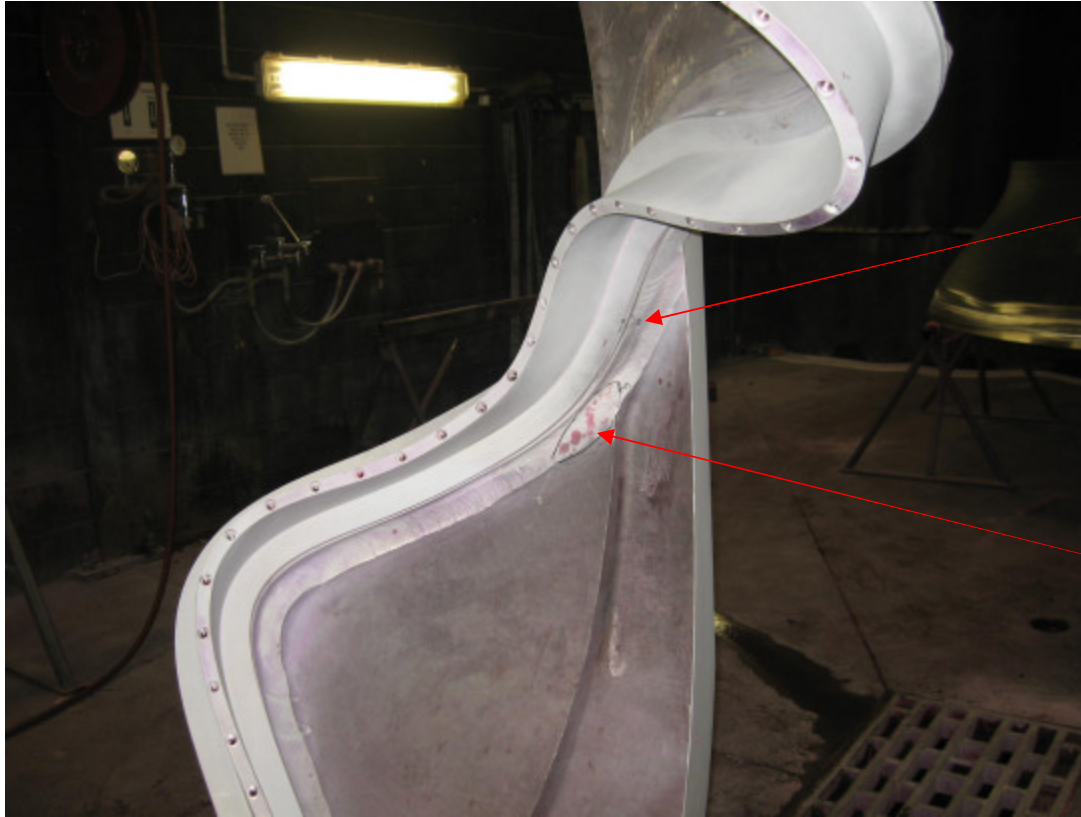
NC21757 – C6 PT Rejections



Indication 1 is a .600" linear on large wing
datum D side



NC21757 – C6 PT Rejections

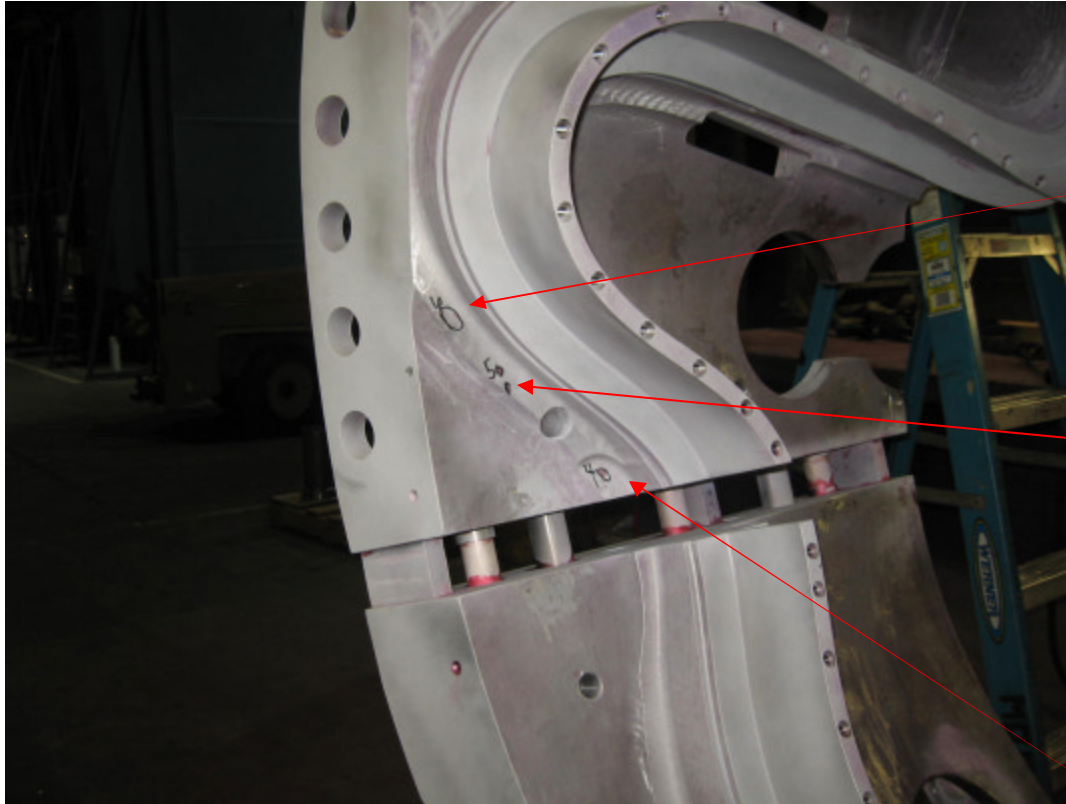


Indication 2 is a .400" linear in the VPI groove near T hole 51 on the datum D side.

Indication 3 is a cluster of porosity in radius below the VPI groove between T holes 48 and 50 on the datum D side. The largest is a .300" linear.



NC21757 – C6 PT Rejections



Indications 4, 5 & 6 are all in the radius below the VPI groove on the Datum D side between T holes 10 thru 14.

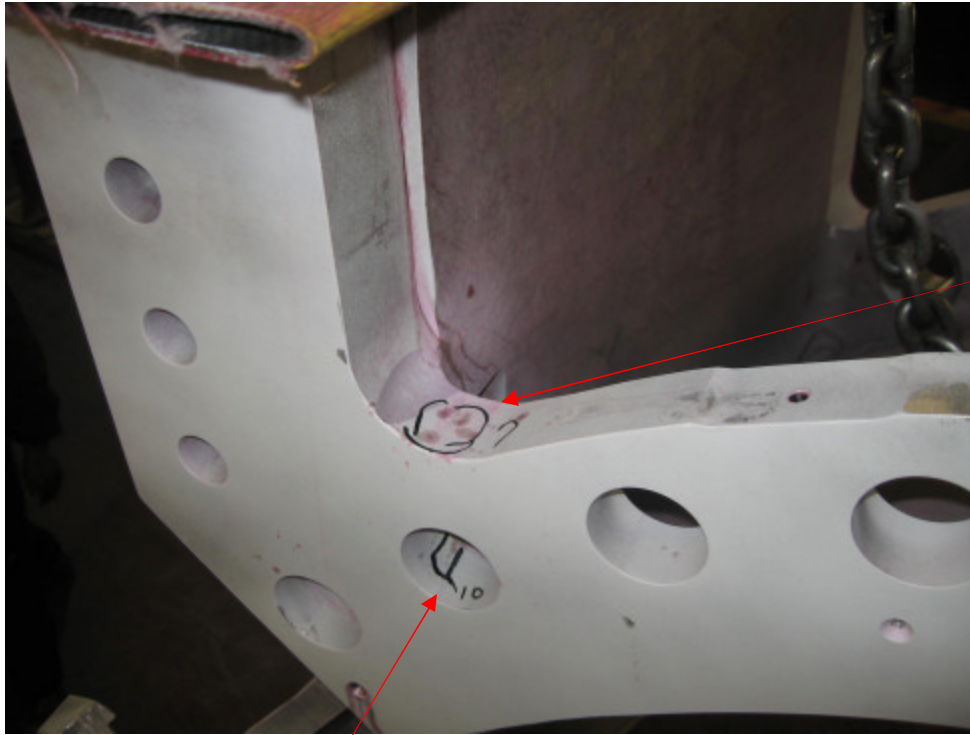
Indication 4 is a .300" linear

Indication 5 is a .200" linear (longest of two)

Indication 6 is a .200" linear (longest of two)

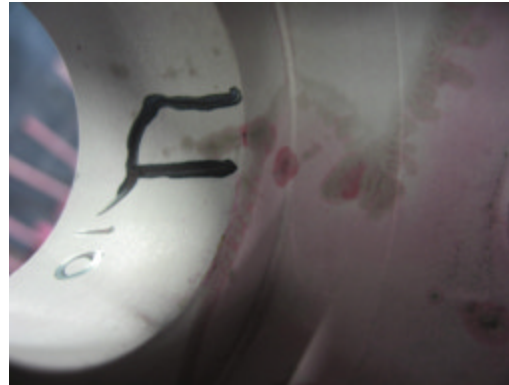


NC21757 – C6 PT Rejections



See sheet 4, zone C5 of drawing for locations of indications 7 and 10.

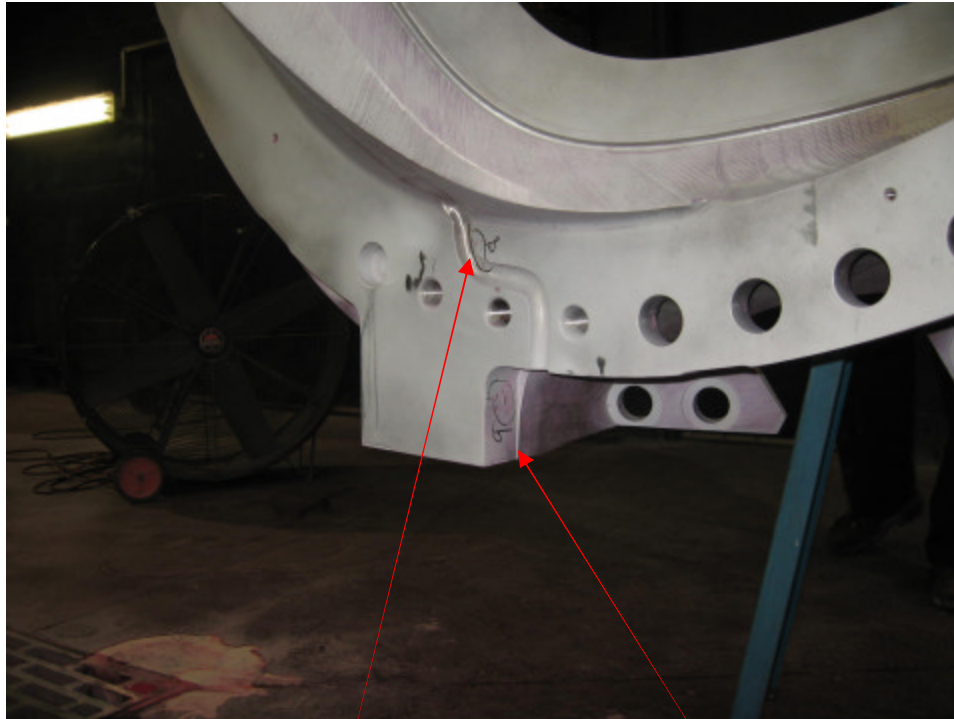
Indication 7 is a cluster of linear indications on the perimeter of the datum D flange (.350" longest).



Indication 10 is .600" linear on the ID and counterbore face of the 1.885" bore. The indication extends across both surfaces.



NC21757 – C6 PT Rejections



Indication 8 contains a cluster of linear indications on the large wing of the datum E side. The longest is .300”.

Indication 9 is a small cluster of linear indications on the perimeter of the datum E flange. Longest is .600”.

See zone G6 of drawing sheet 5.

