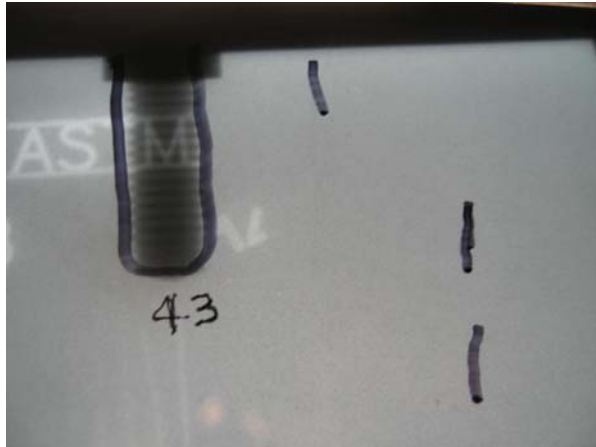
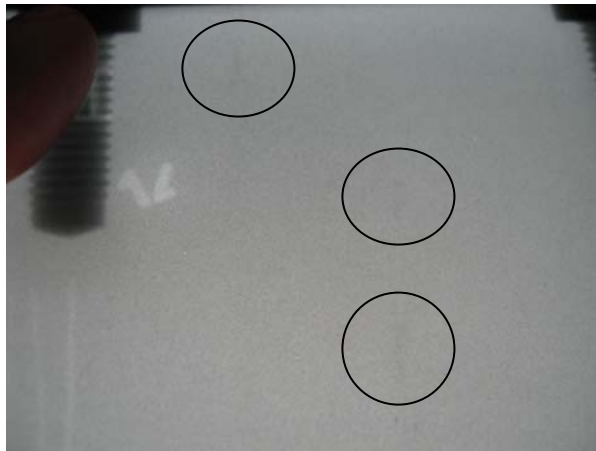


## NC20741 Attachment – A4 RT Failures



The picture to the left is of an overlay that shows the three .25" long rejections between holes 43 and 44.

The picture below is the actual film. The defects are circled but difficult to see with a picture.

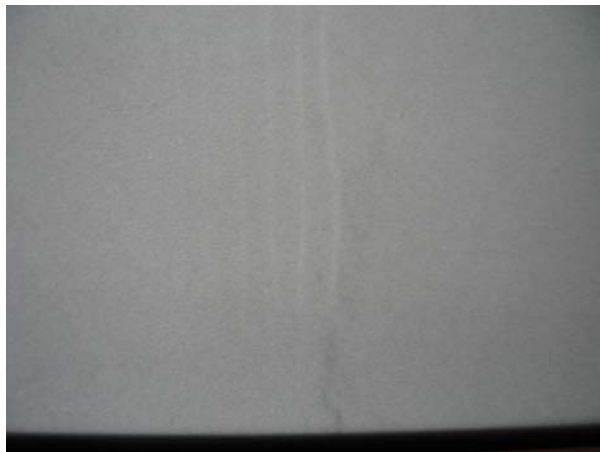


## NC20741 Attachment – A4 RT Failures



The picture to the left is of an overlay that shows the reject directly below hole 28. This indication did show up during the PT inspection on the D side of the T but it has a “Y” shape to it that we did not see during PT.

The length of this defect is 2” – 2.5” from the base upward.





RT Map of High Stress Region

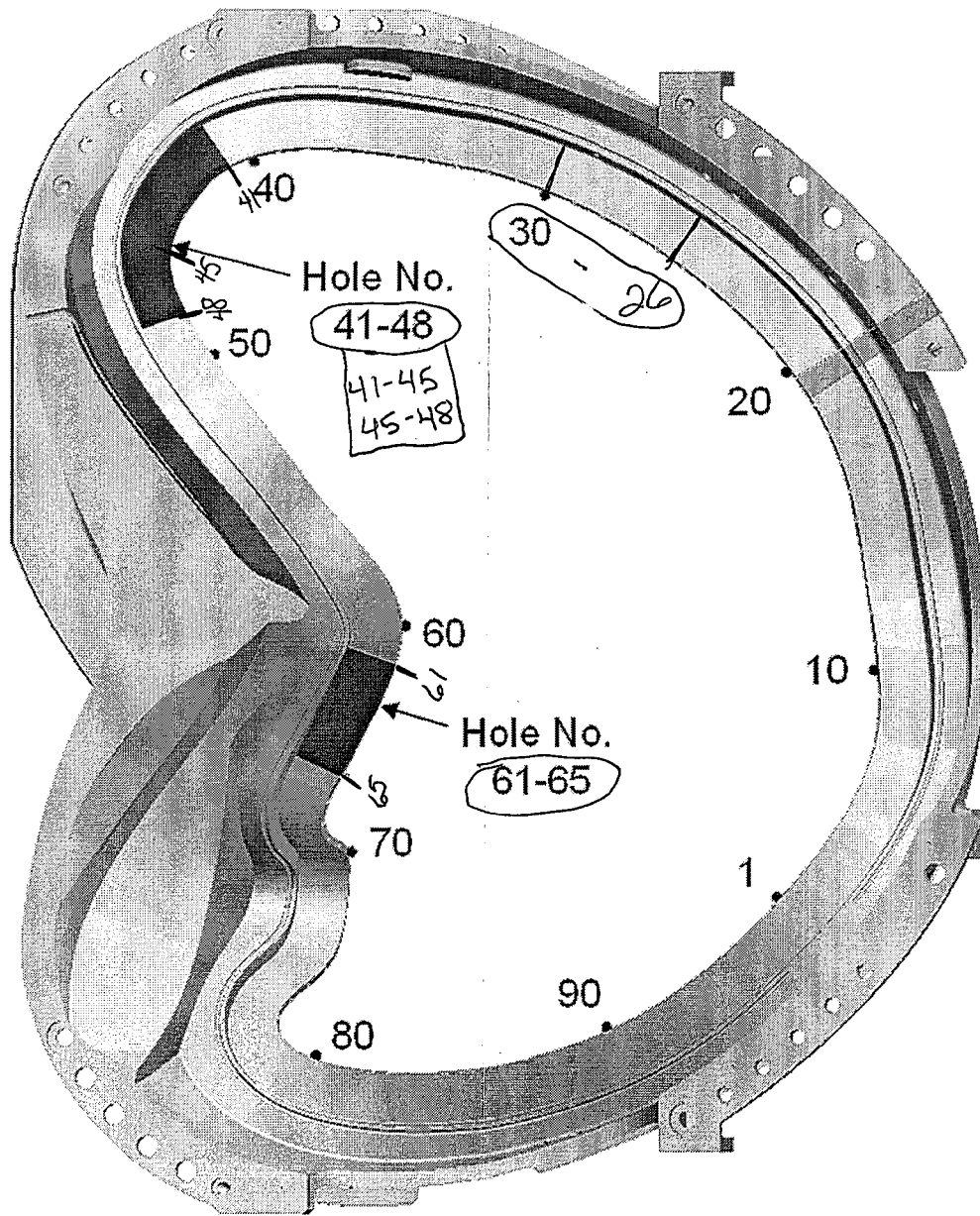


Figure 1 High Stress Region Identification for Type-A MCWF

65709/4.0/1/134/818  
SE141-114 rev. 8 /A4  
11/7/06  
page 2 of 2