

---

**Customer: ENERGY INDUSTRIES OF OHIO**

Contact: NANCY HORTON  
E-Mail: NKHFlowen@aol.com

Telephone: 216-496-2314  
Fax: 216-328-2001

**Part: SE141-115 / MODULAR COIL, TYPE B**

Drawing ID: SE141-115      Revision: 9  
W/O Links: 1-Type:W: 65708/5.0 Sub: 1

Customer P.O.: S005242-F/Ln:5  
Serial No./Qty: B5

Reported By: MIKE GRIFFITH  
E-Mail: mGriffith@MajorTool.com

Telephone: 317-636-6433  
Fax: 317-634-9420

Problem: 10 REJECTABLE INDICATIONS WERE FOUND AT TIME OF INSPECTION.

1. 1.1" LINEAR
2. 2.3" LINEAR
3. .300" LINEAR
4. .300" LINEAR
5. .300" LINEAR
6. .900" LINEAR
7. .400" LINEAR
8. .900" LINEAR
9. .500" LINEAR
10. 1.0" LINEAR

SEE ATTACHMENT FOR DETAILS.

---

**Proposed Disposition:**

MTM proposes that indications be accepted as is.

---

Number of additional pages: 8 Page PT attachment

---

**Customer Disposition:**     Use As Is     Rework     Repair     Scrap     Replace

The attached list of dye penetrant indications was reviewed during a conference call held on 10 February 2007 attended by D. Williamson, T. Brown, L. Sutton, L. Dudek, J. Chrzanowski, S. Raftopoulos, W. Reiersen, P. Heitzenroeder, and F. Malinowski. All were similar to those of previously processed castings and are outside of the high stress area and therefore were dispositioned "Use As Is".

Approved by:

Tech. Rep.

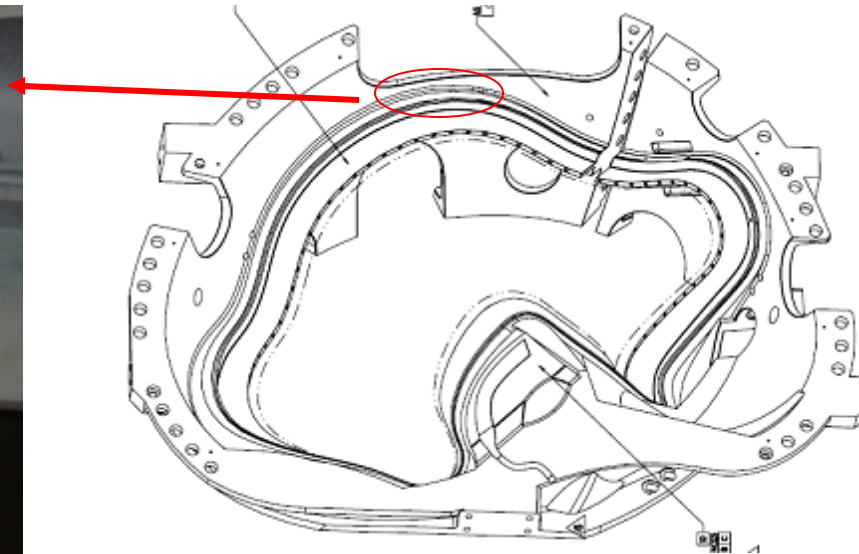
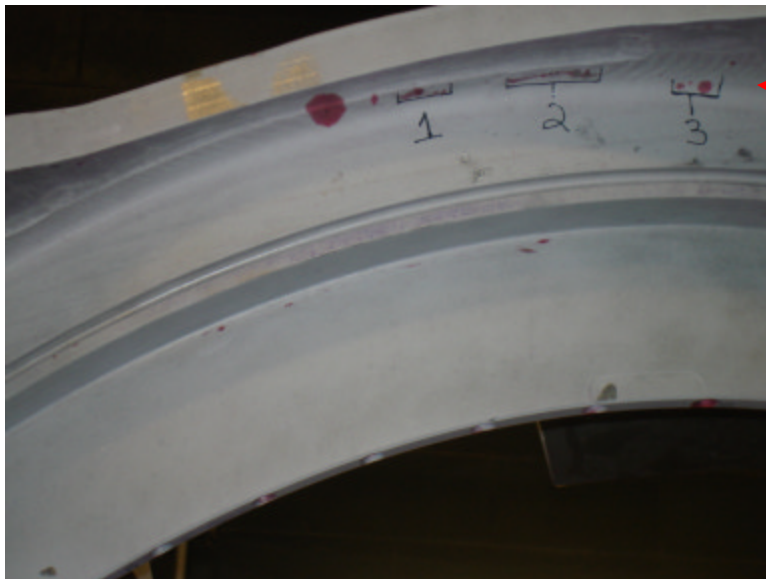
RLM.

**Major Tool Implemented By:** \_\_\_\_\_ **Title:** \_\_\_\_\_ **Date:** \_\_\_\_\_



# NC21124 – B5 PT Rejections

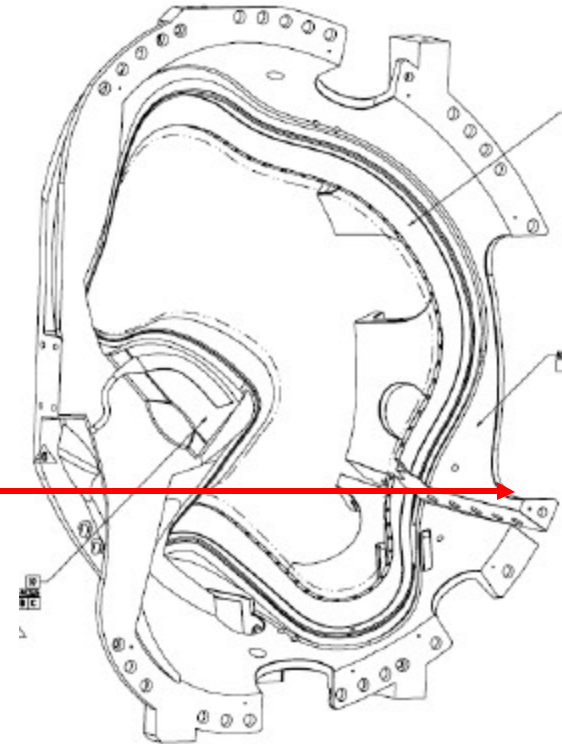
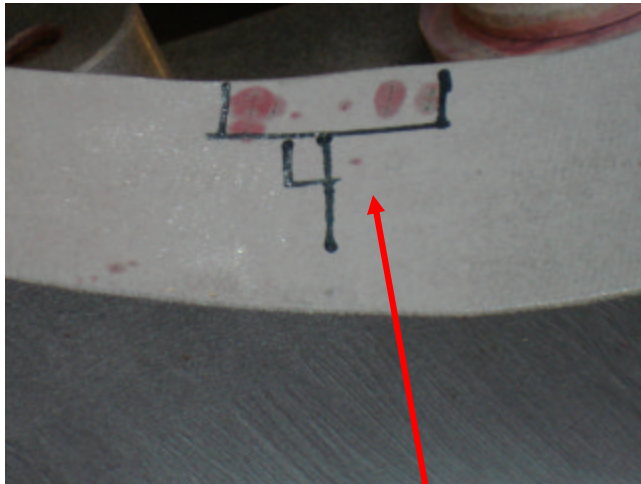
Indications 1 thru 3 are on the Datum D side of the casting between T holes 10 – 15.  
Indication 1 is 1.1” linear. Indication 2 is a 2.3” linear. Indication 3 is a .300” linear.





## NC21124 – B5 PT Rejections

Indication 4 is a small cluster of linear indications of which the longest is .300". These are located on the Datum D side in the cutout shown in the picture below.

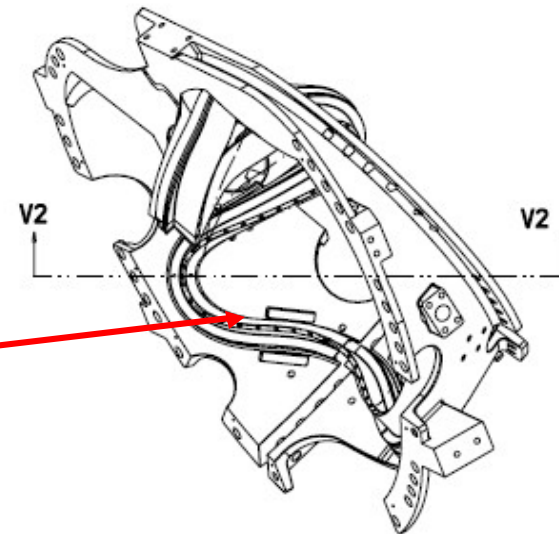
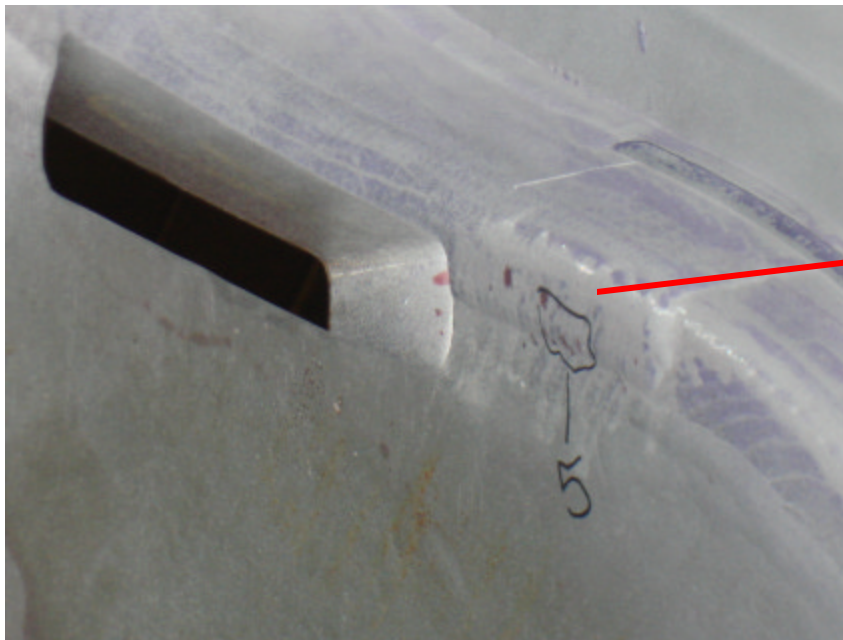




## NC21124 – B5 PT Rejections



Number 5 is a small cluster of linear indications along the casting wall near the lead block slot on the datum E side of the casting. Longest is .300”.



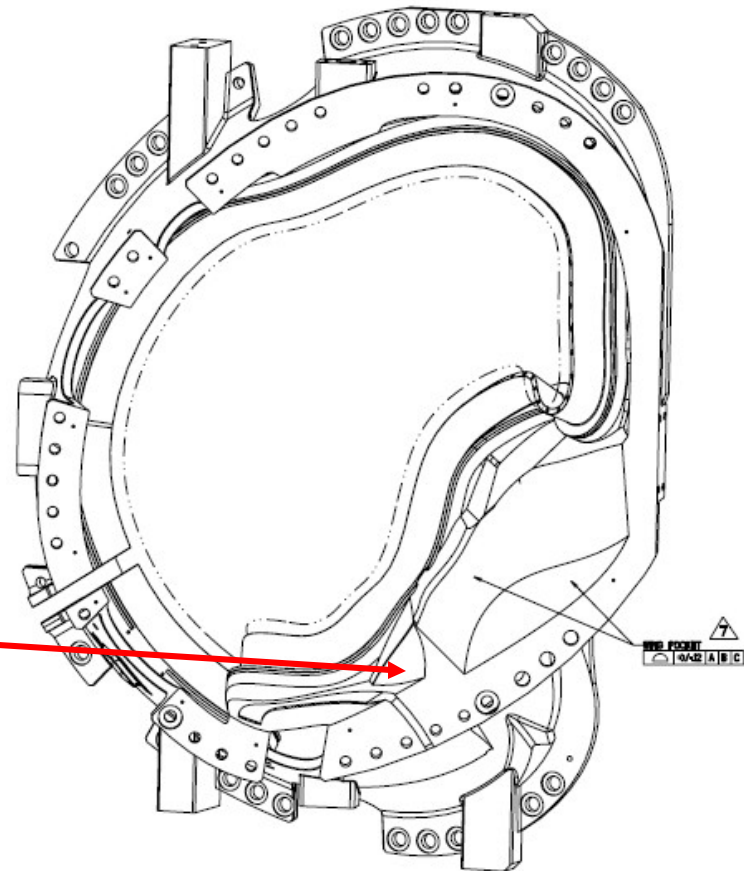
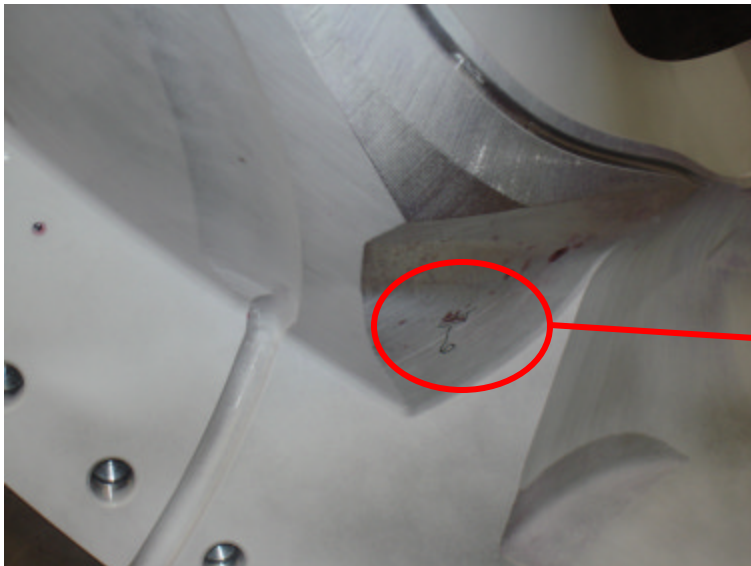




# NC21124 – B5 PT Rejections



Indication 6 is a .900" linear cluster of porosity in the datum E wing surface shown below.





## NC21124 – B5 PT Rejections

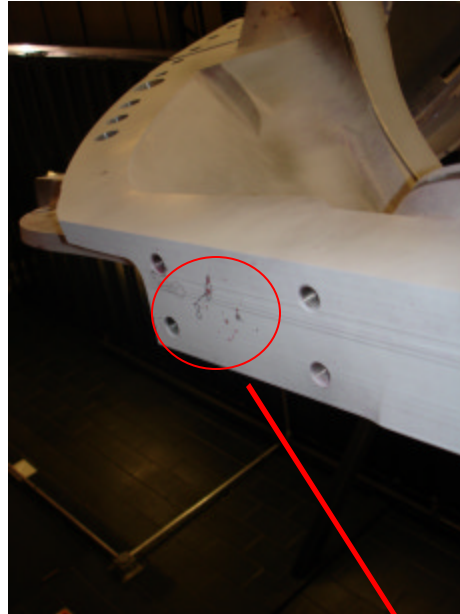


Indication 7 is a .400” long inclusion on the long leg of the T section on the datum E side between T holes 51 and 52.

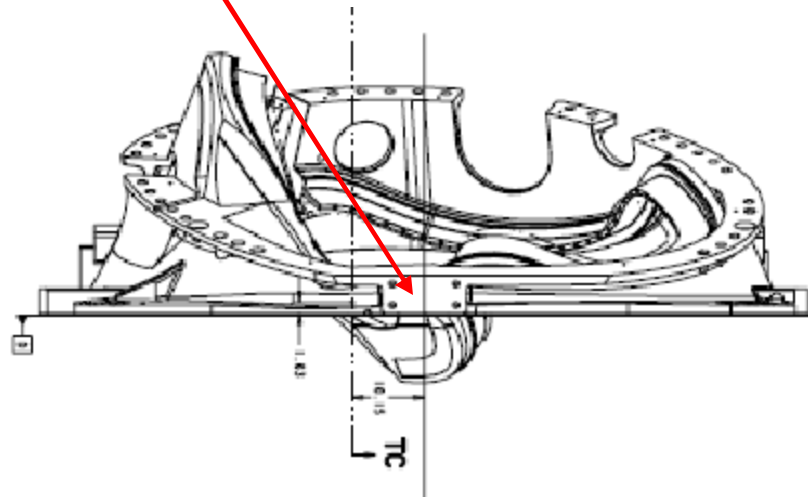




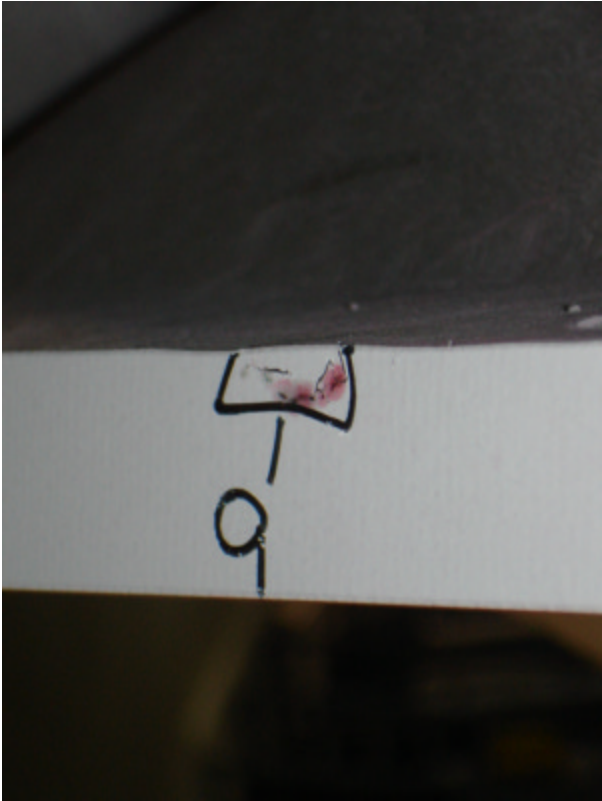
# NC21124 – B5 PT Rejections



Indication 8 is a .900” linear located on the pad shown in the drawing below.



Rev. 1



Indication 9 is a .500" linear located on the outer edge of the datum E flange adjacent to flange hole 29.





## NC21124 – B5 PT Rejections



Indication 10 is a 1.0” linear located the E side of casting between T holes 85 and 86.

