

Major Tool & Machine, Inc.
1458 East 19th Street
Indianapolis, IN 46218-4289

MTM N/C: 20632

Page: 1
Date: 10/18/06
User ID: GRIFFITH

Customer: ENERGY INDUSTRIES OF OHIO

Contact: NANCY HORTON
E-Mail: NKHFlowen@aol.com

Telephone: 216-496-2314
Fax: 216-328-2001

Part: SE141-115 / MODULAR COIL, TYPE B

Drawing ID: SE141-115 Revision: 9
W/O Links: 1-Type:W: 65708/2.0 Sub: 1

Customer P.O.: S005242-F/Ln:2
Serial No./Qty: B2

Reported By: MIKE GRIFFITH
E-Mail: mGriffith@MajorTool.com

Telephone: 317-636-6433
Fax: 317-634-9420

Problem: PART IS REJECTED PER ASTM A903/A903M LEVEL 1. THERE WERE TEN REJECTABLE DEFECTS
FOUND AT TIME OF INSPECTION. SEE ATTACHED.

Proposed Disposition:

PROPOSE TO ACCEPT INDICATIONS AS IS.

Number of additional pages: 4 page summary

Customer Disposition: ☐ Use As Is ☐ Rework ☐ Repair ☐ Scrap ☐ Replace

Major Tool Implemented By: _____ **Title:** _____ **Date:** _____

n:\mtmapps\Mtnonc14.qrp

Major Tool and Machine, Inc. 1458 East 19th Street, Indianapolis, IN 46218-4289 Tel: 317-636-6433 Fax: 317-634-9420

PT Inspection Results of B2 – NC20632

1. 1.5" linear located on E side of casting in the radius below the VPI groove near T hole 93.



2. Cluster of linear indications in large cutout adjacent to poloidal break (sheet 8, zone E7). Largest indication is a .400" linear.



3. Cluster of indications on the inner poloidal break flange surface closest to the datum E flange. Largest indication is a .300" linear.

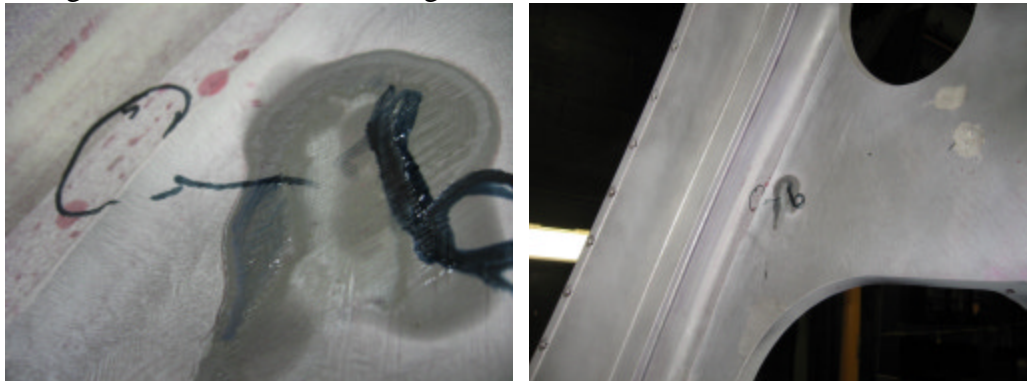


PT Inspection Results of B2 – NC20632

4. Linear indication 1.3" in length on E side inner wing surface.
5. Linear indication .200" in length on E side inner wing surface.



6. Cluster of linear indications located on E side of casting in the radius below the VPI groove near T hole 10. Longest is .200".



PT Inspection Results of B2 – NC20632

7. .500" linear on outer edge of datum E flange between E flange holes 8 and 9.
8. Linear indications on outer edge of E flange near E flange hole 7. Longest is .600".



9. .500" linear on outer edge of datum E flange near E flange hole 5.



PT Inspection Results of B2 – NC20632

10. .200" linear in Ø3.0" hole located on E flange (sht. 5, zone C4).

