

SUPPLIER NONCONFORMANCE REPORT

Date 5/9/08

Number: 1160

Company: Vulcan Products Co.

PPPL PO# PE007970-W

Item Drawing/Part# SE185-311 Part 02

Job Description: NCSX FPA Station 3 Fixture

Hold Tag Applied? Yes

NONCONFORMING CONDITION (include requirement(s) violated):

Drawing calls for ASTM A36 material. Vulcan ordered A36 material with certification. The certification provided does not identify any standard other than "commercial quality" and lists no mechanical properties. The listed chemistry conforms to A36.

Reported By D. Barber - Vulcan

Date 5/9/08

RECOMMENDED DISPOSITION (include actions to prevent recurrence):

Use-As-Is

Reject

Disposition By: _____

Date _____

PPPL Concurrence _____

Date _____

Cognizant Engineer (COG)

PPPL Concurrence _____

Date _____

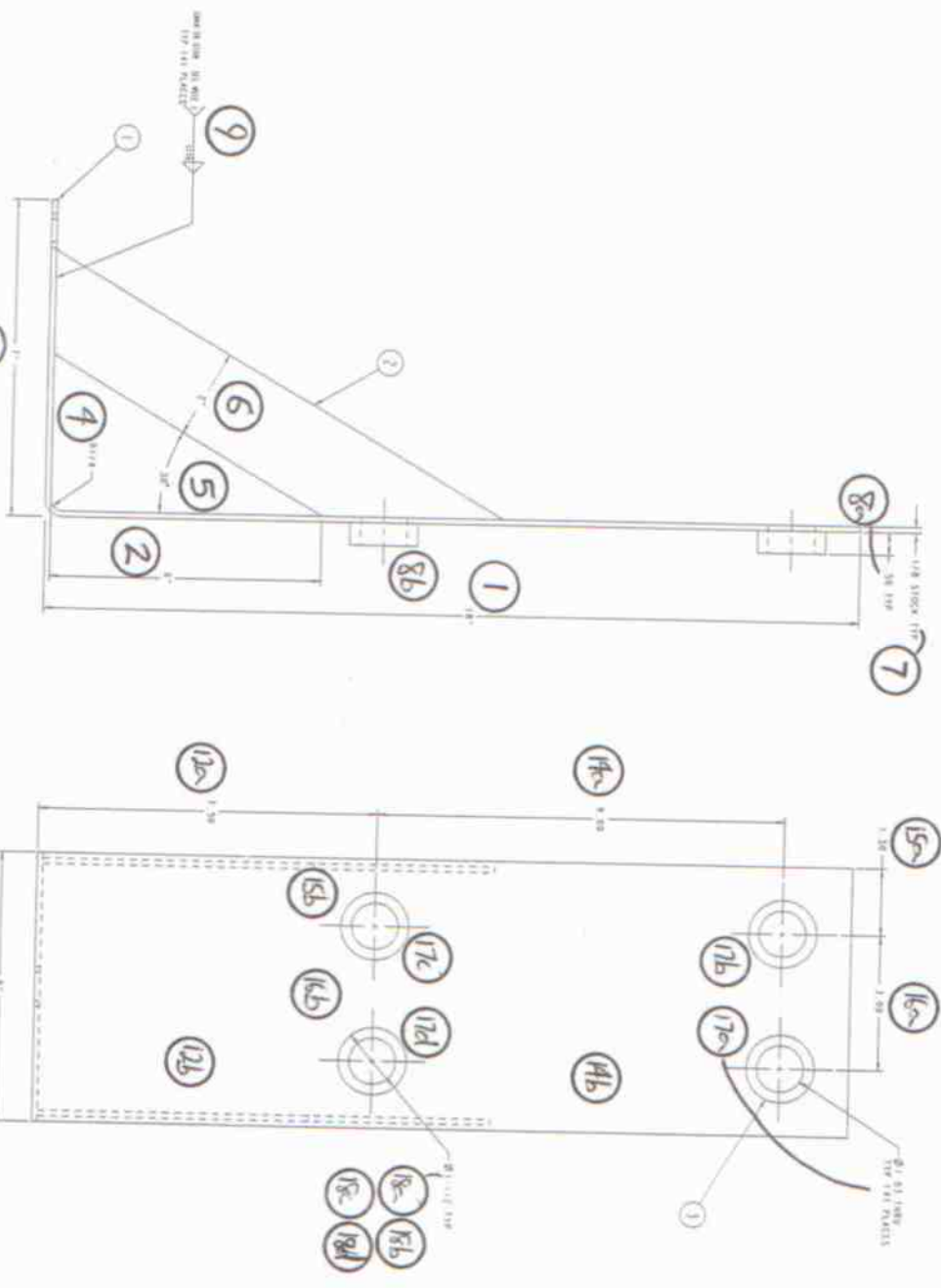
Responsible Line Manager (RLM)

DISTRIBUTION

Dwg. No.	Rev.	P.O. No.	Rec No.	Qty. Rec'd	Date Prep	Date Comp.	%	Qty. Scrap
SE185-311	0	AE007970-W		1	05-07-07			
Part Name <i>Rear Laser Rev</i>	Location	Vendor <i>cust</i>		Qty. Insp.	Prep By <i>du5</i>	Comp. By		Qty. RTU
Work Order No. <i>030A91-006</i>	Oper. <i>Rev.</i>	Next Oper. <i>Prod.</i>	Vendor Part No.	Qty. Rej.	Verif. By <i>du5</i>	Rework \$	Scrap \$	Qty. Acc.
ITEM	REQUIREMENT/INSPECTION RESULTS			CLASS		DISPOSITION/INSTRUCTIONS		DISP. APPROVAL DATE
1.	<i>Required material per drawing is 1/8 THK ASTM A36.</i>			<i>SE185-311-02</i>		<i>VPc is submitting this report as a nonconformance.</i>		<i>Inspection</i> <i>Def MRB sibbs</i>
	<i>Material certifications on hand do not show that material is certified to A36.</i>					<i>would like to manufacture and ship with "as is" material.</i>		QUALITY ENGR
	<i>1 1/2" x 6 FB.</i>							DESIGN ENGR.
								PROCUREMENT
								PLANNING
REWORK COMP BY								
MFG. INSP								
RESPONSIBLE ORG.								
<input type="checkbox"/> ENGINEERING <input type="checkbox"/> PLANNING <input type="checkbox"/> TOOL DESIGN <input type="checkbox"/> MACH SHOP <input type="checkbox"/> FAB SHOP <input type="checkbox"/> ASSEMBLY <input type="checkbox"/> INSPECTION <input type="checkbox"/> PROD. CONTROL <input type="checkbox"/> VENDOR <input type="checkbox"/> PROCUREMENT								
RESP. ORG SIGNATURE								

CAUSE AND CORRECTIVE ACTION

1. *RD was written correct in ordering A36 material*
2. *Corrective Action to Supplier to:*
 - a) *Send material that is ordered on VPc RD.*
 - b) *Provide material sets in a timely fashion.*



02 ASSEMBLY - REAR LASER PEN MOUNTING BRACKET WELDMENT
SCALE: 1:100

VPC w/c 03091-006

FOR NOTES AND DIM SEE SHEET 1

© 2000 Boeing

GENERAL INFORMATION		MATERIALS		FINISHES		TOLERANCES		DIMENSIONS	
DATE	BY	DESCRIPTION	QUANTITY	UNIT	FINISH	TOLERANCE	POSITION	ANGLE	DEPTH
03/09/01	W. S. 13A	REAR LASER PEN MOUNTING BRACKET WELDMENT	1	PC	AS SUPPLIED	±.005	AS SHOWN	AS SHOWN	AS SHOWN
MATERIALS		FINISHES		TOLERANCES		DIMENSIONS		DIMENSIONS	
ALUMINUM	6061-T6	AS SUPPLIED	AS SUPPLIED	±.005	AS SHOWN	AS SHOWN	AS SHOWN	AS SHOWN	AS SHOWN
MATERIALS		FINISHES		TOLERANCES		DIMENSIONS		DIMENSIONS	
STEEL	A36	AS SUPPLIED	AS SUPPLIED	±.005	AS SHOWN	AS SHOWN	AS SHOWN	AS SHOWN	AS SHOWN

Metallurgical Test Report

J. Steelberg Supply, Inc. certifies materials are melted and manufactured in the USA unless specified as Import, Unknown, or left blank in the column "Originating Mill".

Vendor: _____

Shipped: _____

J. Steelberg Supply, Inc.
 P.O. Box 366
 Payson UT 84651

1045
Northwest Steel & Pipe
 P.O. Box 11247
 Tacoma WA 98411

Same

J. Steelberg Delivery Number: 7717	Purchase Order Number 1598	Date of Shipment 1/31/2008
------------------------------------	----------------------------	----------------------------

Heat 20706700 A43638 C43596	Specification Commercial Quality Commercial Quality Commercial Quality	Originating Mill Gallatin Gallatin
--------------------------------------	---	--

This report consolidates test reports or material contents per item as shown and held in our records. The chemistries and physicals when required, meet the specification as shown. Transition heats are specified as CQ material with MA heat. Chemistry for transition heats are nominal and show only the data we have available. Buyer assumes all responsibility for end use and application of any materials herein.

Curt Paulson / Quality Assurance

Material Description	Qty / Thickness / Width / Length	Weight	Heat	Mat ID	Test ID	Yield	Tensile	% Elong 2"	% Elong 8"
4bd1 1/8" 6" x 20' HRCQ Strip		8160#	2070670	B194205					
6bd1 1/8" 4" x 20' HRCQ Strip		12036#	A43638	127098					
			C43596	127329					

Chemistries	Heat	C	MN	P	S	SI	CU	NI	CR	MO	SN	AL	N	V	B	TI	CB	AS	CA
	20706700	.04	.24	.008	.002	.020	.09	.05	.04	.020	.007	.020	.0097	0.000	.000	.001	0.000		.0014
	A43638	.19	.80	.019	.006	.090	.14	.05	.07	.020	.007	.021	.0097	0.000	.000	.001	0.000		.0014
	C43596	.05	.29	.010	.006	.020	.11	.04	.05	.020	.007	.020	.0090	.001	.005	.001	0.000		.0015

Steel Dynamics, Inc.
4500 Country Road 59
Butler, IN 46721 USA
Telephone (260) 868-8000
Fax (260) 868-8965

CHEMICAL/PHYSICAL CERTIFICATION



Customer #	Part #	PO #	Order #	Line Item #	Coil #	Heat #	Coil Weight (lbs)
76		030207HRS - 1	156746	6	07B194205	20706700	52,080

Width (in) 52.23 - mill edge
Gauge (in) 0.126
Length (ft) 2,327

Material Specification
Product Description
 Hot Rolled Band

Ladle Chemical Analysis %

C	Min	P	S	Si	Al	Cu	Ni	Cr	Mo	Sn	N	V	Nb	Ti	B	Ca	Pb
0.04	0.24	0.008	0.002	0.02	0.024	0.09	0.03	0.04	0.01	0.006	0.009	0.001	0.000	0.001	0.0060	0.002	0.00

Mechanical Properties

Yield Strength (PSI) 37,950
Tensile Strength (PSI) 60,304
Percent Elongation 41.0
Rockwell Result 56

Made in the USA
 Shipped from Butler, IN, United States
 Made, thin slab cast and rolled by proud Americans in Butler, IN.
 All tests were performed according to applicable standards and are correct as contained in the records of this company.

**Physical properties are
 from HEAT ANALYSIS
 ONLY, not a certification.**

Quality Assurance

https://www.stld.com/butler/customer/reports/report_generator.jsp