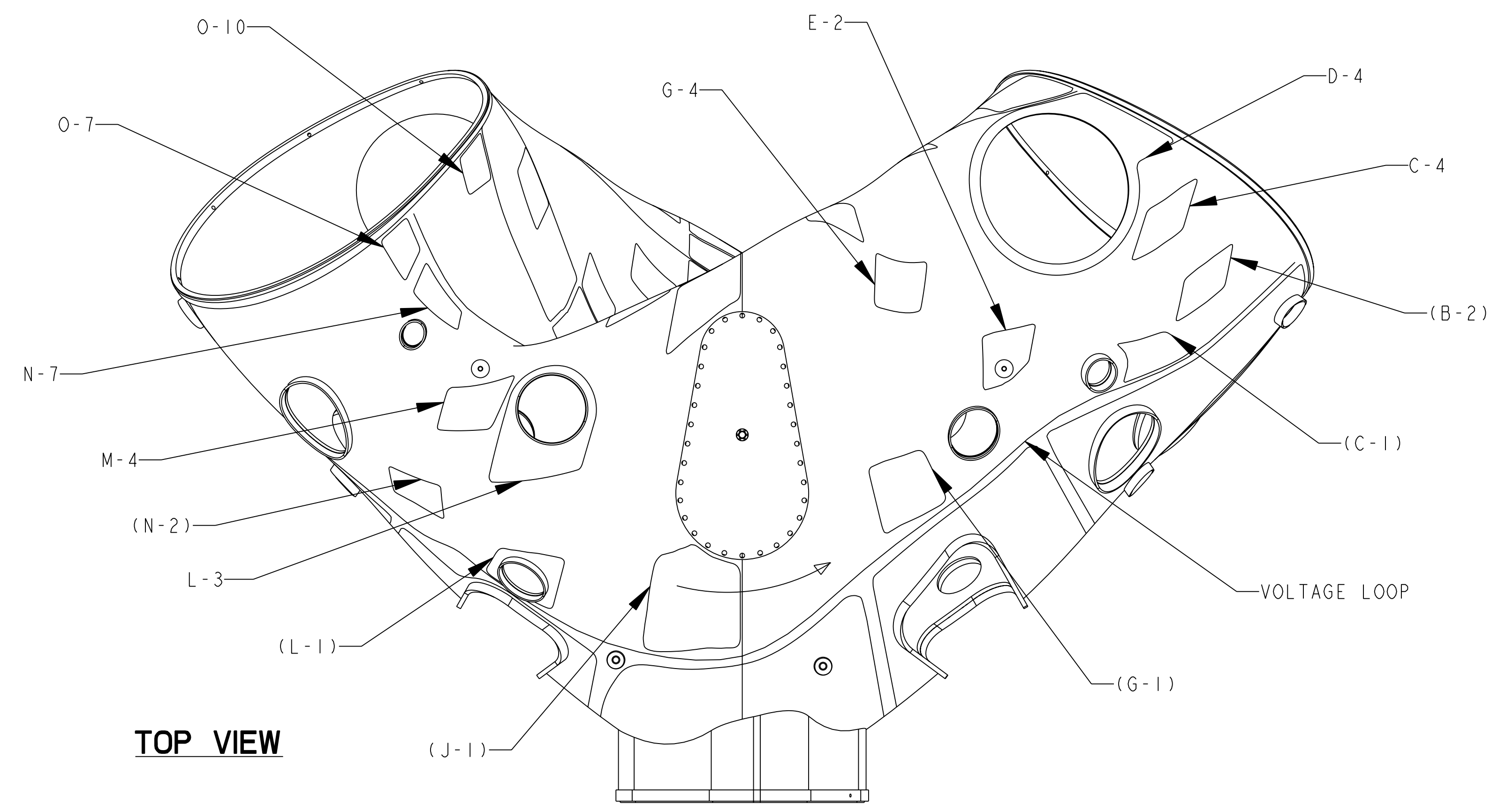
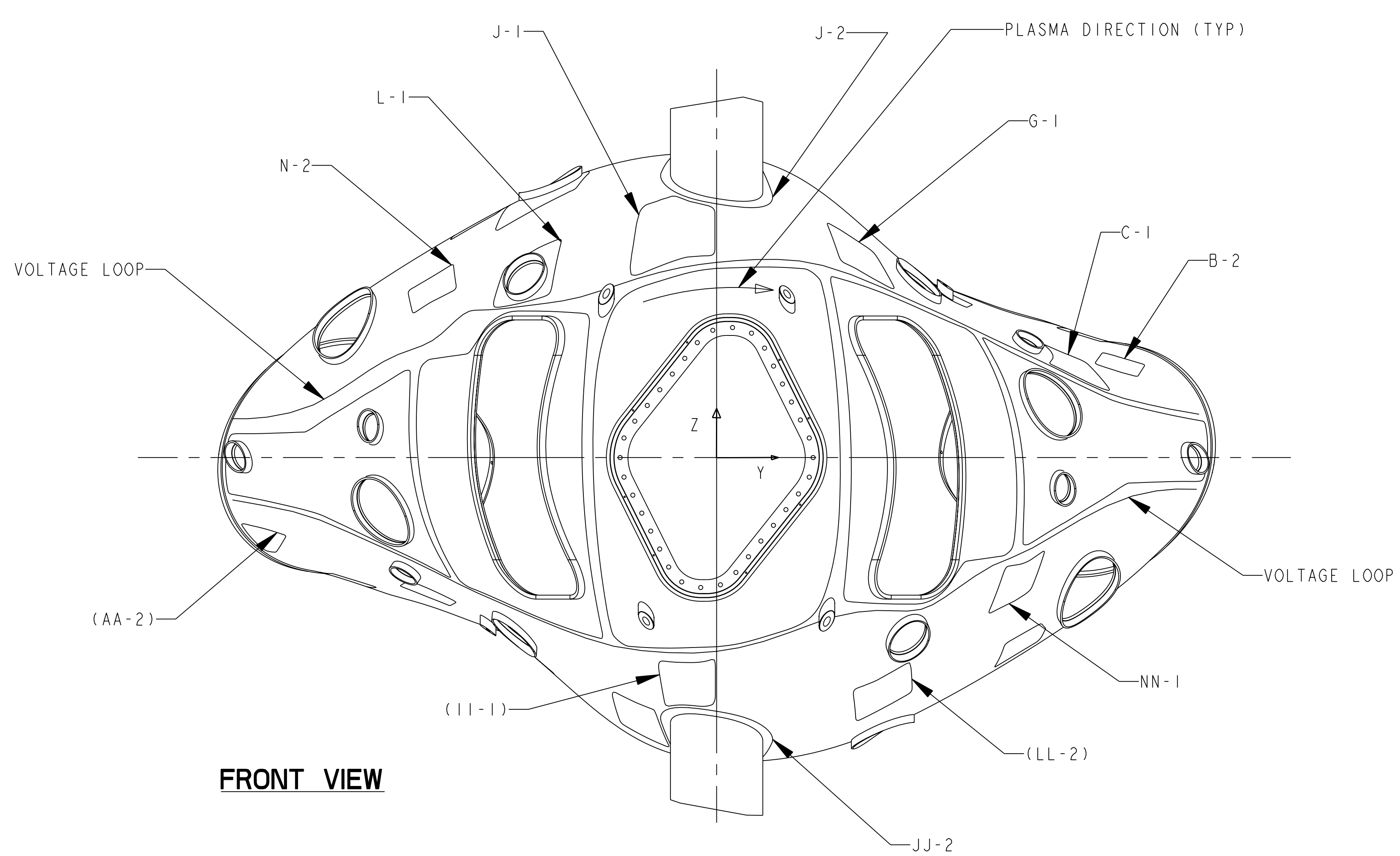


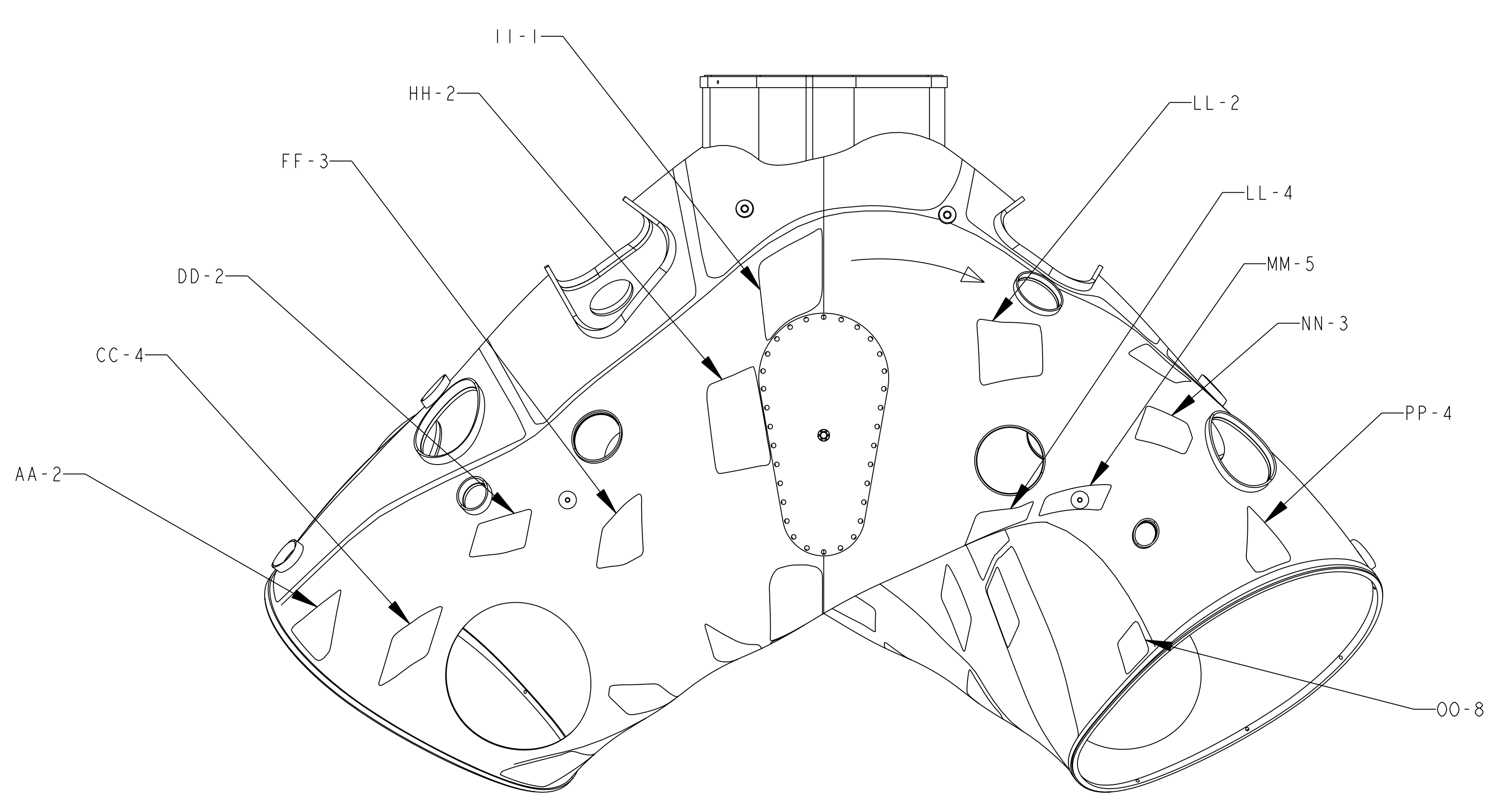
NO.	REVISION	BY	CH	SUP	APPROVED	DATE



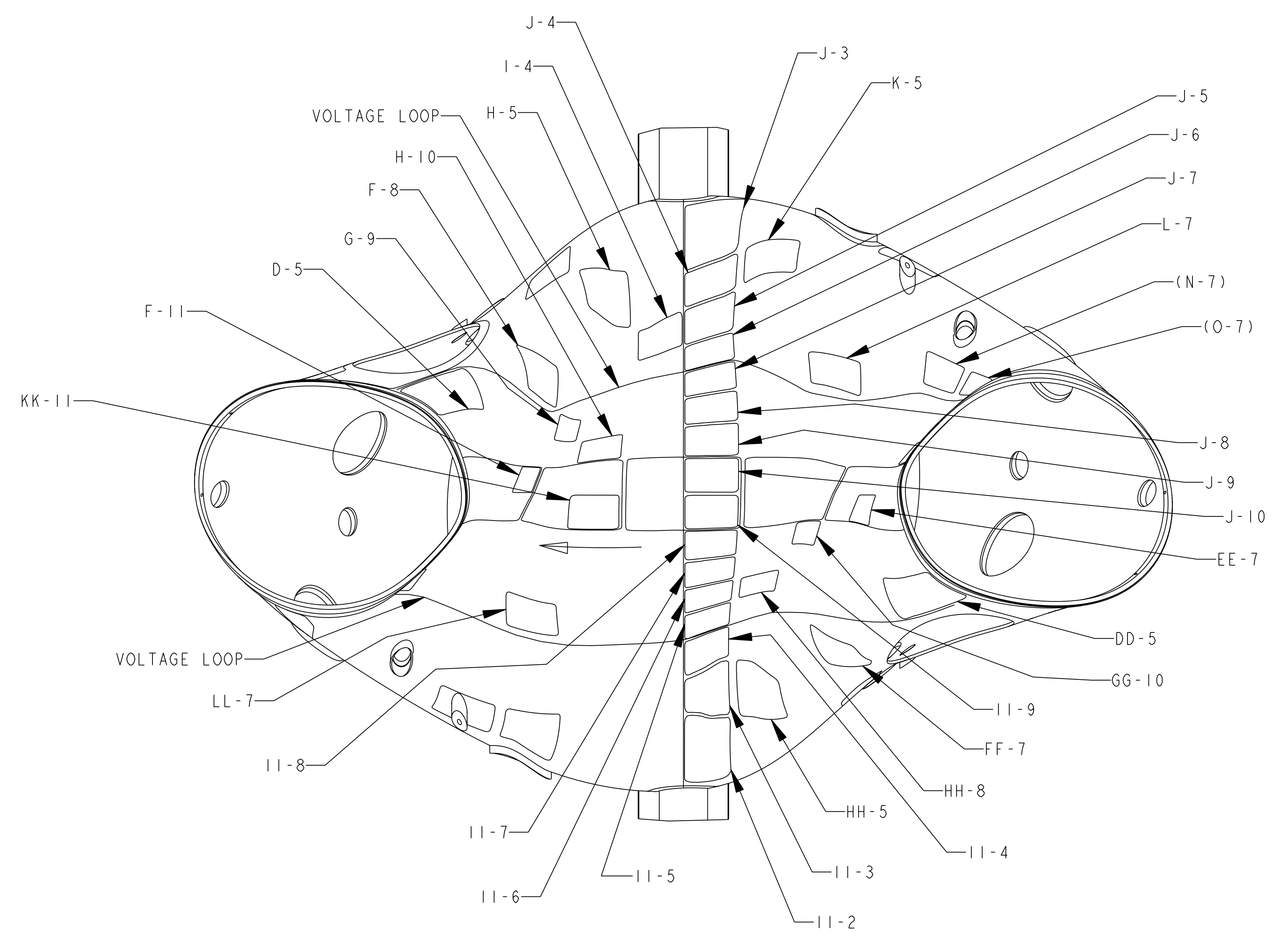
**TOP VIEW**



**FRONT VIEW**



**BOTTOM VIEW**



**BACK VIEW**

**NOTES:**

1. DIMENSIONS ARE IN INCHES
2. FABRICATION, INSPECTION AND TESTING SHALL BE PERFORMED IN ACCORDANCE WITH SPECIFICATION NCSX-CSPEC-31-01-00
3. SEE DRAWING SE310-030-1 FOR FINAL THETA-PHI PLOT AND EXTERNAL FLUX LOOPS TWISTED LEAD ROUTING
4. THE LARGE MIDPLANE LOOP DETAILS CAN BE FOUND IN SE310-030-1
5. LOOP DATA POINTS ARE CONTAINED IN se310-030-2\_pts.igs. LOOP POINTS AND CURVES ARE CONTAINED IN DATA FILE se310-030-2\_asm.igs. INDIVIDUAL LOOP CURVES WITH POINTS ARE CONTAINED IN THE ZIP FILE TITLED, VVSA2\_LOOPS.

PART NO.	DRAWING NO	NOMENCLATURE OR DESCRIPTION	MATERIAL	QTY	RECD
3	SE310-030-2	VV PERIOD 2 LOOP DETAILS	SEE NOTES	1	
2	SE120-002	VACUUM VESSEL PERIOD ASSY	--	1	
1	SE310-029	BASIC GEOMETRY FOR ALL LOOPS ON VV	--	1	

**PARTS LIST**

COMPUTER GENERATED DRAWING MANUAL CHANGES NOT PERMITTED	CENTRAL FILES: UNLESS OTHERWISE SPECIFIED	PRINCETON PLASMA PHYSICS LABORATORY PRINCETON UNIVERSITY <b>NATIONAL COMPACT STELLARATOR EXPERIMENT</b>			
DO NOT VERIFY INFORMATION BY SCALING DRAWING	DIMENSIONS ARE IN INCHES MACHINE SURFACES BREAK SHARP EDGES .005/.020	VVSA2 MAGNETIC LOOP ARRANGEMENT DRAWING			
WEIGHT	TOLERANCES NON-CUMULATIVE	DSN: T. BROWN	1/8/07	DRAWING NO:	
MODEL NAME SE310-030-2	DECIMAL-INCH FRACTIONS	CHK: M. COLE	1/8/07	<b>SE310-030-2</b>	
WELDING ENGINEER	NEXT ASSEMBLY	ENGR: G. LABIK	1/8/07	SHEET 1 OF 1	
		SUPV: J. SIEGEL	1/8/07	REV D. 3	

**RELEASE LEVEL: WIP**  
**DWG VERSION NO: 9**

NCSX-SE310-030-2