

| Activity ID | ORDR BS | Activity Description | Duration (work days) | Baseline Start | Baseline Finish | Shifts | Total Float | Latest Budgeted Cost | FY07 | | | FY08 | | | | | | | | |
|---|---------|----------------------|--|----------------|-----------------|---------|-------------|----------------------|------------|-----|-----|------|-----|-----|-----|-----|-----|--|--|--|
| | | | | | | | | | MAY | JUN | JUL | AUG | SEP | OCT | NOV | DEC | JAN | | | |
| cc 9450 - NCSX Fabrication (MIE) | | | | | | | | | | | | | | | | | | | | |
| 1 - Stellarator Core Systems | | | | | | | | | | | | | | | | | | | | |
| 18 - Field Period Assembly | | | | | | | | | | | | | | | | | | | | |
| Job: 1802 - FP Assy Oversight&Support-VIOLA | | | | | | | | | | | | | | | | | | | | |
| Station 2-Modular Coil Sub- Assembly | | | | | | | | | | | | | | | | | | | | |
| R1802-207 | | 2 | Procedures written & approved | 14 | 12SEP07 | 01OCT07 | | 218 | 0.00 | | | | | | | | | | | |
| R1802-209 | | 2 | JHA completed | 6 | 02OCT07 | 09OCT07 | | 218 | 0.00 | | | | | | | | | | | |
| R1802-211 | | 2 | Training needs identified & released | 6 | 10OCT07 | 17OCT07 | | 218 | 0.00 | | | | | | | | | | | |
| R1802-213 | | 2 | ACC review completed | 2 | 18OCT07 | 19OCT07 | | 218 | 0.00 | | | | | | | | | | | |
| R1802-215 | | 2 | Pre-job brief completed | 1 | 22OCT07 | 22OCT07 | | 218 | 0.00 | | | | | | | | | | | |
| R1802-217 | | 2 | Station 2 operational | 1 | 23OCT07 | 23OCT07 | | 218 | 0.00 | | | | | | | | | | | |
| Station 3-Modular Coil to VVSA Assembly | | | | | | | | | | | | | | | | | | | | |
| R1802-307 | 11 | 3 | Procedures written & approved | 10 | 23NOV07 | 10DEC07 | | 220 | 0.00 | | | | | | | | | | | |
| R1802-309 | 12 | 3 | JHA completed | 6 | 11DEC07 | 18DEC07 | | 220 | 0.00 | | | | | | | | | | | |
| R1802-311 | 14 | 3 | Training needs identified & released | 6 | 19DEC07 | 04JAN08 | | 220 | 0.00 | | | | | | | | | | | |
| Oversight and Supervision | | | | | | | | | | | | | | | | | | | | |
| 1802ORNLO2 | 10 | A | ORNL Title III field period assy station 2 | 372* | 03AUG07 | 04FEB09 | | 265 | 151,263.62 | | | | | | | | | | | |
| R1802-001 | 10 | A | Metrology Engr Super FY07 | 106* | 01MAY07* | 28SEP07 | | 1,249 | 64,011.60 | | | | | | | | | | | |
| R1802-003 | 10 | A | Metrology Engr Super FY08 | 250* | 01OCT07* | 30SEP08 | | 999 | 160,310.88 | | | | | | | | | | | |
| R1802-005 | 10 | A | FPA Management FY07 | 106* | 01MAY07* | 28SEP07 | | 1,249 | 117,941.68 | | | | | | | | | | | |
| R1802-007 | 10 | A | FPA Management FY08 | 250* | 01OCT07* | 30SEP08 | | 999 | 277,523.54 | | | | | | | | | | | |
| R1802-013 | 10 | A | HP Coverage in the TFTR TC LOE FY07 | 106* | 01MAY07* | 28SEP07 | | 1,249 | 60,432.68 | | | | | | | | | | | |
| R1802-015 | 10 | A | HP Coverage in the TFTR TC LOE FY08 | 250* | 01OCT07* | 30SEP08 | | 999 | 149,857.40 | | | | | | | | | | | |
| 1802MAY | 14 | | May cost incr | 20 | 01MAY07* | 29MAY07 | | 1,335 | 15,000.00 | | | | | | | | | | | |
| Job:1810-Field Period Assy -Station 1,2,3 VIOLA | | | | | | | | | | | | | | | | | | | | |
| General F.P. Assy support | | | | | | | | | | | | | | | | | | | | |
| R1810-001 | | S | LOE Crane support, fixture setupfor FY07 | 106* | 01MAY07* | 28SEP07 | | 1,249 | 66,183.47 | | | | | | | | | | | |
| R1810-003 | | S | LOE Crane support, fixture setupfor FY08 | 250* | 01OCT07* | 30SEP08 | | 999 | 165,923.83 | | | | | | | | | | | |
| R1810-005 | | S | LOE Field Supervision for FY07 | 106* | 01MAY07* | 28SEP07 | | 1,249 | 98,014.08 | | | | | | | | | | | |
| R1810-007 | | S | LOE Field Supervision for FY08 | 250* | 01OCT07* | 30SEP08 | | 999 | 245,765.14 | | | | | | | | | | | |
| R1810-009 | | S | LOE Metrology sprt FY07 1.5 fte EM & 1.0 fte TB | 106* | 01MAY07* | 28SEP07 | | 1,249 | 224,956.70 | | | | | | | | | | | |
| R1810-011 | | S | LOE Metrology sprt FY08 1.5 fte EM & 1.0 fte TB | 250* | 01OCT07* | 30SEP08 | | 999 | 747,018.00 | | | | | | | | | | | |
| R1810-013 | | S | Misc M&S FY07 | 106* | 01MAY07* | 28SEP07 | | 1,249 | 19,140.00 | | | | | | | | | | | |
| R1810-015 | | S | Misc M&S FY08 | 250* | 01OCT07* | 30SEP08 | | 999 | 47,088.00 | | | | | | | | | | | |
| Station 1-VV Prep (hard surface components) FP#1 | | | | | | | | | | | | | | | | | | | | |
| R1810-1105 | 10 | S | Instl cooling lines & Weld cooling/htg risers | 31 | 01JUN07* | 16JUL07 | 1 | 283 | 50,099.80 | | | | | | | | | | | |
| R1810-1107 | 11 | S | Verify Instl of H/C lines,headers,manifolds | 5 | 17JUL07 | 23JUL07 | 1 | 283 | 7,669.00 | | | | | | | | | | | |
| R1810-1108 | 12 | S | Perform final acceptance testing (H/C flow test) | 5 | 24JUL07 | 30JUL07 | 1 | 283 | 12,773.00 | | | | | | | | | | | |

Run Date 21JUN07 06:53

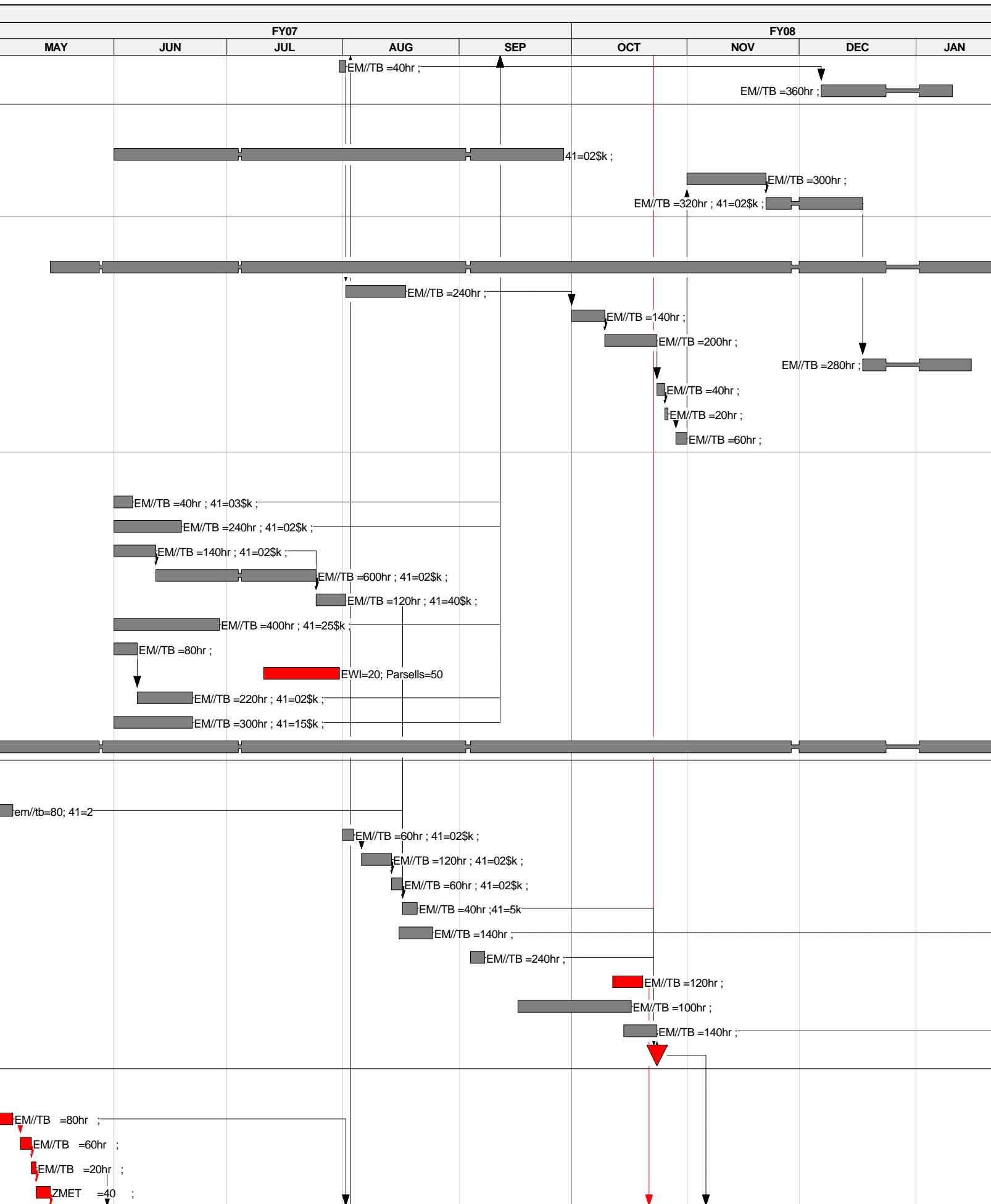
Forecast
 Progress Bar
 Critical Activity

ETCZ

NCSX Project
Resource Loaded Schedule
 June 20,2007
 near term field period assy tasks

Sheet 1 of 5

| Activity ID | ORDR BS | Activity Description | Duration (work days) | Baseline Start | Baseline Finish | Shifts | Total Float | Latest Budgeted Cost | FY07 | | | | | FY08 | | | | | |
|---|---------|--|----------------------|----------------|-----------------|--------|-------------|----------------------|------|-----|-----|-----|-----|------|-----|-----|-----|--|--|
| | | | | | | | | | MAY | JUN | JUL | AUG | SEP | OCT | NOV | DEC | JAN | | |
| R1810-1112 | 13 | S Trim seal plates | 2 | 31JUL07 | 01AUG07 | 1 | 283 | 3,067.60 | | | | | | | | | | | |
| R1810-1109 | 14 | S Loop termination & verification | 18 | 07DEC07 | 10JAN08 | 1 | 260 | 28,839.60 | | | | | | | | | | | |
| Station 1- VV Prep (hrd surf cmpntsFP#2) | | | | | | | | | | | | | | | | | | | |
| R1810-1203 | 10 | S Misc Hardware | 84* | 01JUN07* | 28SEP07 | | 1,249 | 2,552.00 | | | | | | | | | | | |
| R1810-1209 | 13 | S Install cooling/htg lines to vac vsl | 15 | 01NOV07* | 21NOV07 | 1 | 254 | 24,033.00 | | | | | | | | | | | |
| R1810-1211 | 14 | S Weld cooling/htg risers | 16 | 22NOV07 | 17DEC07 | 1 | 254 | 28,251.20 | | | | | | | | | | | |
| Station 1- VV Prep (hrd surf cmpntsFP#3) | | | | | | | | | | | | | | | | | | | |
| R1810-1303 | 10 | S Misc Hardware | 427 | 15MAY07* | 03FEB09 | | 918 | 2,635.38 | | | | | | | | | | | |
| R1810-1304 | 11 | S Layout diag & coolant paths on vessel | 12 | 02AUG07* | 17AUG07 | 1 | 283 | 18,405.60 | | | | | | | | | | | |
| R1810-1305 | 11 | S Install heater tape on vertical ports | 7 | 01OCT07* | 09OCT07 | 1 | 254 | 11,215.40 | | | | | | | | | | | |
| R1810-1314 | 12 | S Install heater tape on removable ports | 10 | 10OCT07 | 23OCT07 | 1 | 254 | 16,022.00 | | | | | | | | | | | |
| R1810-1311 | 13 | S Wind magnetic diagnostic sensors | 14 | 18DEC07 | 15JAN08 | 1 | 254 | 22,430.80 | | | | | | | | | | | |
| R1810-1312 | 14 | S Trim seal plates | 2 | 24OCT07 | 25OCT07 | 1 | 254 | 3,204.40 | | | | | | | | | | | |
| R1810-1307 | 15 | S Verify installation of heater tapes | 1 | 26OCT07 | 26OCT07 | 1 | 254 | 1,602.20 | | | | | | | | | | | |
| R1810-1309 | 16 | S Attach studs for coolant lines | 3 | 29OCT07 | 31OCT07 | 1 | 254 | 4,806.60 | | | | | | | | | | | |
| Station 2 Trials & Development | | | | | | | | | | | | | | | | | | | |
| R1810-2003 | 11 | S Trial tensioning test on prototype | 3 | 01JUN07* | 05JUN07 | 1 | 286 | 6,895.60 | | | | | | | | | | | |
| R1810-2005 | 11 | S Trial bushing and shim test on prototype | 12 | 01JUN07* | 18JUN07 | 1 | 277 | 20,957.60 | | | | | | | | | | | |
| R1810-2009 | 11 | S Perform trial x-y-z alignments on A1-A2. | 7 | 01JUN07* | 11JUN07 | 1 | 274 | 13,288.60 | | | | | | | | | | | |
| R1810-2010 | 11 | S Perform developmental trials on A1-A2. | 30 | 12JUN07* | 24JUL07 | 1 | 274 | 48,566.00 | | | | | | | | | | | |
| R1810-2011 | 11 | S Alignment mechanisms, metro equipt | 6 | 25JUL07 | 01AUG07 | 1 | 274 | 60,242.80 | | | | | | | | | | | |
| R1810-2013 | 11 | S Procure alignment mechanisms, fiducials, lifting | 20 | 01JUN07* | 28JUN07 | 1 | 269 | 62,576.00 | | | | | | | | | | | |
| R1810-2015 | 11 | S Develop procedures for torquing bolts | 4 | 01JUN07* | 06JUN07 | 1 | 274 | 6,135.20 | | | | | | | | | | | |
| R1810-2050 | 12 | S Weld trials f/nose welding (in job 1421 | 14* | 11JUL07 | 30JUL07 | 1 | 210 | 89,320.00 | | | | | | | | | | | |
| R1810-2017 | 13 | S Determine fiducial types&locations | 11 | 07JUN07 | 21JUN07 | 1 | 274 | 19,423.80 | | | | | | | | | | | |
| R1810-2019 | 14 | S Procure monuments&related metrology | 15 | 01JUN07* | 21JUN07 | 1 | 274 | 42,147.00 | | | | | | | | | | | |
| R1810-2001 | 15 | S Misc Hardware and hardware rework (1/2 fte loe) | 260 | 01MAY07 | 14MAY08 | 1 | 1,095 | 88,516.60 | | | | | | | | | | | |
| Setup | | | | | | | | | | | | | | | | | | | |
| R1810-2023 | 11 | S Install FIRST Holding 20 deg fixture | 4 | 01MAY07 | 04MAY07 | 1 | 335 | 8,687.20 | | | | | | | | | | | |
| R1810-2025 | 11 | S Install SECOND Holding 20 deg fixture | 3 | 01AUG07* | 03AUG07 | 1 | 263 | 7,153.40 | | | | | | | | | | | |
| R1810-2027 | 11 | S Install THIRD Holding 20 deg fixture | 6 | 06AUG07* | 13AUG07 | 1 | 263 | 11,754.80 | | | | | | | | | | | |
| R1810-2029 | 11 | S Install LAST Holding 20 deg fixture | 3 | 14AUG07* | 16AUG07 | 1 | 263 | 7,153.40 | | | | | | | | | | | |
| R1810-2021 | 13 | S Tools&tooling available for FPA operations | 2 | 17AUG07 | 20AUG07 | 1 | 263 | 9,447.60 | | | | | | | | | | | |
| R1810-2004 | 12 | S Receive Drawings & Hardware (shims & Bolts) | 7 | 16AUG07 | 24AUG07 | 1 | 317 | 10,736.60 | | | | | | | | | | | |
| R1810-2006 | 12 | S Surface grind set of metal shims for qualificat | 4 | 04SEP07* | 07SEP07 | 1 | 250 | 18,405.60 | | | | | | | | | | | |
| R1810-207 | 12 | S Compress alumina shims and sort | 6 | 12OCT07* | 19OCT07 | 1 | 209 | 9,613.20 | | | | | | | | | | | |
| R1810-209 | 12 | S Perform metrology setup & checks | 22 | 17SEP07* | 16OCT07 | 1 | 223 | 7,855.55 | | | | | | | | | | | |
| R1810-2002 | 11 | S Test out Equip & Procedures | 7 | 15OCT07 | 23OCT07 | 1 | 276 | 11,215.40 | | | | | | | | | | | |
| R1810-2108 | 13 | S HARDWARE,DRAWINGS,& PROCURES | 0 | | 23OCT07 | 1 | 218 | 0.00 | | | | | | | | | | | |
| Pre-Measuring and fitup checks | | | | | | | | | | | | | | | | | | | |
| Pre measurement of MCHP A1,B1,C1 flanges | | | | | | | | | | | | | | | | | | | |
| S21-1.01 | 11 | S Verify mating MC's A1,B1,C1 | 4 | 01MAY07* | 04MAY07 | | 217 | 6,135.20 | | | | | | | | | | | |
| S21-1.02 | 11 | S Epoxy paint all close fitting interfacing surfac | 3 | 07MAY07 | 09MAY07 | | 217 | 4,601.40 | | | | | | | | | | | |
| S21-2.01 | 11 | S Set A1 on pre-measured fixt, "B" side down | 1 | 10MAY07 | 10MAY07 | | 217 | 1,533.80 | | | | | | | | | | | |
| S21-2.02 | 11 | S Align to the conical seats locking into of 8 | 2 | 11MAY07 | 14MAY07 | | 217 | 0.00 | | | | | | | | | | | |



| Activity ID | ORDR | BS | Activity Description | Duration (work days) | Baseline Start | Baseline Finish | Shifts | Total Float | Latest Budgeted Cost | FY07 | | | | | FY08 | | | | | | |
|--|------|----|--|----------------------|----------------|-----------------|--------|-------------|----------------------|------|-----|-----|-----|-----|------|-----|-----|-----|--|--|--|
| | | | | | | | | | | MAY | JUN | JUL | AUG | SEP | OCT | NOV | DEC | JAN | | | |
| S21-2.03 | 11 | S | Estab global coord sys on mc geometry. Meas | 7 | 15MAY07 | 23MAY07 | | 217 | 0.00 | | | | | | | | | | | | |
| S21-2.04 | 11 | S | Meas tooling ball monuments on winding form. | 1 | 24MAY07 | 24MAY07 | | 217 | 0.00 | | | | | | | | | | | | |
| S21-2.05 | 11 | S | Scan the "A" flange of the Type-A1 coil. | 1 | 25MAY07 | 25MAY07 | | 217 | 0.00 | | | | | | | | | | | | |
| S21-2.07 | 11 | S | Remove A1 coil from stand | 1 | 29MAY07 | 29MAY07 | | 217 | 1,533.80 | | | | | | | | | | | | |
| S21-2.08 | 11 | S | Measure B1 "A" flange | 14 | 30MAY07 | 18JUN07 | | 217 | 3,067.60 | | | | | | | | | | | | |
| S21-2.11 | 11 | S | Measure C1 "A" flange | 13 | 19JUN07 | 06JUL07 | | 217 | 3,067.60 | | | | | | | | | | | | |
| S21-2.14 | 11 | S | Measure Type A1-A2 "A" flange | 13 | 09JUL07 | 25JUL07 | | 217 | 3,067.60 | | | | | | | | | | | | |
| S21-3.02 | 11 | S | Grind shims first article f/assy process qu | 4 | 26JUL07 | 31JUL07 | | 217 | 6,135.20 | | | | | | | | | | | | |
| S21-4.02 | 14 | S | Perform metrology set-up and checks | 2 | 01AUG07 | 02AUG07 | | 217 | 0.00 | | | | | | | | | | | | |
| S21-3.03 | 15 | S | Ready For Preassembly A1B1C1 | 0 | | 02AUG07 | | 217 | 0.00 | | | | | | | | | | | | |
| Pre measurement of MCHP A2,B2,C2 flanges | | | | | | | | | | | | | | | | | | | | | |
| S22-1.01 | 14 | S | Verify mating MC's of MCHP will come together | 4 | 03AUG07 | 08AUG07 | | 252 | 6,135.20 | | | | | | | | | | | | |
| S22-1.02 | 14 | S | Epoxy paint all close fitting interfacing surfac | 3 | 09AUG07 | 13AUG07 | | 252 | 4,601.40 | | | | | | | | | | | | |
| S22-2.08 | 14 | S | Set Type-B coil on fixt, "B" side flange down. | 2 | 14AUG07 | 15AUG07 | | 252 | 3,067.60 | | | | | | | | | | | | |
| S22-2.09 | 14 | S | Steps 2.02 thru 2.04 scan the "A" side flange. | 5 | 16AUG07 | 22AUG07 | | 252 | 0.00 | | | | | | | | | | | | |
| S22-2.1 | 14 | S | Remove Type-B coil from stand and store coil. | 1 | 23AUG07 | 23AUG07 | | 252 | 1,533.80 | | | | | | | | | | | | |
| S22-2.11 | 14 | S | Set Type-C coil on fixt, "B" side flange down. | 1 | 24AUG07 | 24AUG07 | | 252 | 1,533.80 | | | | | | | | | | | | |
| S22-2.12 | 14 | S | Steps 2.02 thru 2.04 scan the "A" side flange. | 5 | 27AUG07 | 31AUG07 | | 252 | 0.00 | | | | | | | | | | | | |
| S22-2.13 | 14 | S | Remove Type-C coil from stand and store coil. | 1 | 04SEP07 | 04SEP07 | | 252 | 1,533.80 | | | | | | | | | | | | |
| S22-3.02 | 14 | S | Compress alumina shims sort by thickness | 3 | 05SEP07 | 07SEP07 | | 252 | 4,601.40 | | | | | | | | | | | | |
| S22-4.02 | 14 | S | Perform metrology set-up and checks | 2 | 10SEP07 | 11SEP07 | | 252 | 0.00 | | | | | | | | | | | | |
| S22-4.03 | 15 | S | Ready For Preassembly A2B2C2 | 0 | | 11SEP07 | | 252 | 0.00 | | | | | | | | | | | | |
| Pre measurement of MCHP A3,B3,C3 flanges | | | | | | | | | | | | | | | | | | | | | |
| S23-1.01 | 14 | S | Verify mating MC's of MCHP will come together | 4 | 12SEP07 | 17SEP07 | | 254 | 6,135.20 | | | | | | | | | | | | |
| S23-1.02 | 14 | S | Epoxy paint all close fitting interfacing surfac | 3 | 18SEP07 | 20SEP07 | | 254 | 4,601.40 | | | | | | | | | | | | |
| S23-2.01 | 14 | S | Set the A3 coil on fixture, A side flange down | 1 | 21SEP07 | 21SEP07 | | 254 | 1,533.80 | | | | | | | | | | | | |
| S23-2.02 | 14 | S | Align to the conical seats locking into min of 8 | 2 | 24SEP07 | 25SEP07 | | 254 | 0.00 | | | | | | | | | | | | |
| S23-2.03 | 14 | S | Measure monuments on fixture and walls. | 7 | 26SEP07 | 04OCT07 | | 254 | 0.00 | | | | | | | | | | | | |
| S23-2.04 | 14 | S | Measure tooling ball monuments | 1 | 05OCT07 | 05OCT07 | | 254 | 0.00 | | | | | | | | | | | | |
| S23-2.05 | 15 | S | Scan the B flange of A3 | 1 | 08OCT07 | 08OCT07 | | 254 | 0.00 | | | | | | | | | | | | |
| S23-2.07 | 16 | S | Remove A3 move to holding area. | 1 | 09OCT07 | 09OCT07 | | 254 | 1,602.20 | | | | | | | | | | | | |
| S23-2.08 | 17 | S | Measure B3 "A" flange | 14 | 10OCT07 | 29OCT07 | | 254 | 3,204.40 | | | | | | | | | | | | |
| S23-2.11 | 18 | S | Measure C3 "A" flange | 13 | 30OCT07 | 15NOV07 | | 254 | 3,204.40 | | | | | | | | | | | | |
| S23-2.14 | 19 | S | Measure Type A3-A4 "A" flange | 13 | 16NOV07 | 06DEC07 | | 254 | 3,204.40 | | | | | | | | | | | | |
| S23-3.02 | 20 | S | Compress alumina shims sort by thickness | 4 | 07DEC07 | 12DEC07 | | 254 | 4,806.60 | | | | | | | | | | | | |
| S23-4.02 | 21 | S | Perform metrology set-up and checks | 2 | 13DEC07 | 14DEC07 | | 254 | 0.00 | | | | | | | | | | | | |
| S23-4.03 | 22 | S | Ready For Preassembly A3B3C3 | 0 | | 17DEC07 | | 254 | 0.00 | | | | | | | | | | | | |
| Pre measurement of MCHP A4,B4,C4 flanges | | | | | | | | | | | | | | | | | | | | | |
| S24-1.01 | 14 | S | Verify mating MC's of MCHP will come together | 4 | 17DEC07 | 20DEC07 | | 256 | 6,408.80 | | | | | | | | | | | | |
| S24-1.02 | 14 | S | Epoxy paint all close fitting interfacing surfac | 3 | 21DEC07 | 03JAN08 | | 256 | 4,806.60 | | | | | | | | | | | | |
| Station 2-MC Sub Assy A1-B1-C1 | | | | | | | | | | | | | | | | | | | | | |
| Pre-assemble A1-A2 | | | | | | | | | | | | | | | | | | | | | |
| S21-5.00 | 11 | S | BEGIN A-A Pre-assembly | 0 | | 02AUG07 | | 217 | 0.00 | | | | | | | | | | | | |
| S21-5.01 | 11 | S | Place A2 "B" side down. Obtain fiducials | 2 | 03AUG07 | 06AUG07 | | 217 | 3,067.60 | | | | | | | | | | | | |
| S21-5.02 | 11 | S | Align to the conical seats locking into 8. | 1 | 07AUG07 | 07AUG07 | | 217 | 0.00 | | | | | | | | | | | | |
| S21-5.03 | 11 | S | Meas monuments on fixture & walls. | 2 | 08AUG07 | 09AUG07 | | 217 | 0.00 | | | | | | | | | | | | |
| S21-5.04 | 11 | S | Place shims on coil identical to A1-A2 fit up | 1 | 10AUG07 | 10AUG07 | | 217 | 766.90 | | | | | | | | | | | | |
| S21-5.05 | 11 | S | Install dial indicators on the MC to see deflec | 1 | 13AUG07 | 13AUG07 | | 217 | 3,067.60 | | | | | | | | | | | | |

| Activity ID | ORDR | BS | Activity Description | Duration (work days) | Baseline Start | Baseline Finish | Shifts | Total Float | Latest Budgeted Cost | FY07 | | | | | FY08 | | | | |
|------------------------|------|----|--|----------------------|----------------|-----------------|--------|-------------|----------------------|------|-----|-----|-----|-----|------|-----|-----|-----|--|
| | | | | | | | | | | MAY | JUN | JUL | AUG | SEP | OCT | NOV | DEC | JAN | |
| | | | | | | | | | | | | | | | | | | | |
| S21-5.06 | 11 | S | Lower mating A1 modular coil into position. | 1 | 14AUG07 | 14AUG07 | | 217 | 1,533.80 | | | | | | | | | | |
| S21-5.07 | 11 | S | Meas monuments bottom coil. Jack to .002" | 1 | 15AUG07 | 15AUG07 | | 217 | 1,533.80 | | | | | | | | | | |
| S21-5.08 | 11 | S | Using 3 points, position as was done in A1A2 fit | 1 | 16AUG07 | 16AUG07 | | 217 | 1,533.80 | | | | | | | | | | |
| S21-5.09 | 11 | S | Torque to 50% | 2 | 17AUG07 | 20AUG07 | | 217 | 3,067.60 | | | | | | | | | | |
| S21-5.1 | 11 | S | Make "wiggle" test Tighten bolt and recheck. | 1 | 21AUG07 | 21AUG07 | | 217 | 1,533.80 | | | | | | | | | | |
| S21-5.11 | 11 | S | Meas tooling balls both coils. | 5 | 22AUG07 | 28AUG07 | | 217 | 0.00 | | | | | | | | | | |
| S21-5.12 | 11 | S | Adjust shims locally. Re-torque all studs to 50% | 3 | 29AUG07 | 31AUG07 | | 217 | 4,601.40 | | | | | | | | | | |
| S21-5.14 | 11 | S | Install A-A locator bushings | 2 | 04SEP07 | 05SEP07 | | 217 | 3,067.60 | | | | | | | | | | |
| S21-5.15 | 11 | S | Remove studs,nuts,shims. Identify shim | 1 | 06SEP07 | 06SEP07 | | 217 | 1,533.80 | | | | | | | | | | |
| A-B Assembly | | | | | | | | | | | | | | | | | | | |
| S21-6.01 | 11 | S | Place Type A "A" side down. Obtain fiducials | 2 | 07SEP07 | 10SEP07 | | 217 | 3,067.60 | | | | | | | | | | |
| S21-6.02 | 11 | S | Align to the conical seats locking into 8. | 1 | 11SEP07 | 11SEP07 | | 217 | 0.00 | | | | | | | | | | |
| S21-6.03 | 11 | S | Meas monuments on fixture & walls. | 2 | 12SEP07 | 13SEP07 | | 217 | 0.00 | | | | | | | | | | |
| S21-6.04 | 11 | S | Place the an initial set shims on coil | 2 | 14SEP07 | 17SEP07 | | 217 | 3,067.60 | | | | | | | | | | |
| S21-6.041 | 11 | S | Stuff shim bag w/fiberglass & place on wing | 1 | 18SEP07 | 18SEP07 | | 217 | 383.45 | | | | | | | | | | |
| S21-6.05 | 11 | S | Lower the Type-B coil onto the Type-A coil. | 1 | 19SEP07 | 19SEP07 | | 217 | 1,533.80 | | | | | | | | | | |
| S21-6.06 | 11 | S | Measure monuments on A coil. Jack to .002" | 1 | 20SEP07 | 20SEP07 | | 217 | 1,533.80 | | | | | | | | | | |
| S21-6.061 | 11 | S | instl dial indicators for x-y positioning | 1 | 21SEP07 | 21SEP07 | | 217 | 1,533.80 | | | | | | | | | | |
| S21-6.07 | 11 | S | Perform the X-Y positioning of the B coil. | 1 | 24SEP07 | 24SEP07 | | 217 | 1,533.80 | | | | | | | | | | |
| S21-6.08 | 11 | S | Install remaining metal shims torque to 50% | 2 | 25SEP07 | 26SEP07 | | 217 | 3,067.60 | | | | | | | | | | |
| S21-6.09 | 11 | S | Make "wiggle" test Tighten bolt and recheck. | 1 | 27SEP07 | 27SEP07 | | 217 | 1,533.80 | | | | | | | | | | |
| S21-6.1 | 11 | S | Measure the tooling balls on both coils. | 5 | 28SEP07 | 04OCT07 | | 217 | 0.00 | | | | | | | | | | |
| S21-6.11 | 11 | S | Loosen studs, adjust shims. Re-torque to 50%. | 3 | 05OCT07 | 09OCT07 | | 217 | 4,806.60 | | | | | | | | | | |
| S21-6.12 | 11 | S | Install alumina shims. Re-torque to 50%. | 1 | 22OCT07 | 22OCT07 | | 209 | 1,602.20 | | | | | | | | | | |
| S21-6.13 | 11 | S | Make "wiggle" test Tighten bolt and recheck. | 1 | 23OCT07 | 23OCT07 | | 209 | 1,602.20 | | | | | | | | | | |
| S21-6.14 | 11 | S | Measure tooling balls . The max devi .007" . | 5 | 24OCT07 | 30OCT07 | | 209 | 0.00 | | | | | | | | | | |
| S21-6.15 | 11 | S | Loosen studs, adjust shims. Re-torque to 50%. | 3 | 31OCT07 | 02NOV07 | | 209 | 4,806.60 | | | | | | | | | | |
| S21-6.16 | 11 | S | Install bushing. Tighten back to 50% | 1 | 05NOV07 | 05NOV07 | | 209 | 2,403.30 | | | | | | | | | | |
| S21-6.17 | 11 | S | Complete tightening of flange bolts to 100%. | 1 | 06NOV07 | 06NOV07 | | 209 | 1,602.20 | | | | | | | | | | |
| S21-6.18 | 11 | S | Measure tooling balls . The max devi .007" . | 2 | 07NOV07 | 08NOV07 | | 209 | 0.00 | | | | | | | | | | |
| S21-6.19 | 11 | S | Scan the "B" flange of Type-B coil | 1 | 09NOV07 | 09NOV07 | | 209 | 1,602.20 | | | | | | | | | | |
| AB - C Assembly | | | | | | | | | | | | | | | | | | | |
| S21-7.01 | 11 | S | Place "A/B" assy, "A" coil dwn, on 40deg fix. | 3 | 12NOV07 | 14NOV07 | | 217 | 4,806.60 | | | | | | | | | | |
| S21-7.02 | 11 | S | Align to the conical seats locking into a min of | 1 | 15NOV07 | 15NOV07 | | 217 | 0.00 | | | | | | | | | | |
| S21-7.03 | 11 | S | Measure the monuments on the fixture & the | 2 | 16NOV07 | 19NOV07 | | 217 | 0.00 | | | | | | | | | | |
| S21-7.04 | 11 | S | Place initial set metal shims on the coil | 2 | 20NOV07 | 21NOV07 | | 217 | 3,204.40 | | | | | | | | | | |
| S21-7.05 | 11 | S | Lower the Type-C coil onto the Type-B coil. | 1 | 22NOV07 | 22NOV07 | | 217 | 1,602.20 | | | | | | | | | | |
| S21-7.06 | 11 | S | Meas monuments on A coil to eval | 1 | 23NOV07 | 23NOV07 | | 217 | 0.00 | | | | | | | | | | |
| S21-7.07 | 11 | S | Perform the X-Y positioning of the coil. | 1 | 26NOV07 | 26NOV07 | | 217 | 1,602.20 | | | | | | | | | | |
| S21-7.08 | 11 | S | Install remaining metal shims torque to 50% | 2 | 27NOV07 | 28NOV07 | | 217 | 3,204.40 | | | | | | | | | | |
| S21-7.09 | 11 | S | "wiggle" test Tighten bolt and recheck. | 1 | 03DEC07 | 03DEC07 | | 217 | 1,602.20 | | | | | | | | | | |
| S21-7.1 | 11 | S | Measure the tooling balls on all coils. | 5 | 04DEC07 | 10DEC07 | | 217 | 0.00 | | | | | | | | | | |
| S21-7.11 | 11 | S | adjust shims locally. Re-torque all studs to 50% | 3 | 11DEC07 | 13DEC07 | | 217 | 4,806.60 | | | | | | | | | | |
| S21-7.12 | 11 | S | install alumina shims. Re-torque all studs to | 1 | 14DEC07 | 14DEC07 | | 217 | 1,602.20 | | | | | | | | | | |
| S21-7.13 | 11 | S | "wiggle" test Tighten bolt and recheck. | 1 | 17DEC07 | 17DEC07 | | 217 | 1,602.20 | | | | | | | | | | |
| S21-7.14 | 11 | S | Measure the tooling balls on all coils. | 5 | 18DEC07 | 02JAN08 | | 217 | 8,011.00 | | | | | | | | | | |

| Activity ID | ORDR | BS | Activity Description | Duration (work days) | Baseline Start | Baseline Finish | Shifts | Total Float | Latest Budgeted Cost | FY07 | | | | | FY08 | | | | |
|---|------|----|--|----------------------|----------------|-----------------|--------|-------------|----------------------|------|-----|-----|-----|-----|------|-----|-----|-----|--|
| | | | | | | | | | | MAY | JUN | JUL | AUG | SEP | OCT | NOV | DEC | JAN | |
| | | | | | | | | | | | | | | | | | | | |
| Station 2 MC Sub Assy A2-B2-C2 | | | | | | | | | | | | | | | | | | | |
| A-B Assembly | | | | | | | | | | | | | | | | | | | |
| S22-6.01 | 14 | S | A2 "A" flange dwn, 20deg fixt.Obtain fiduci | 1 | 12NOV07 | 12NOV07 | | 209 | 1,602.20 | | | | | | | | | | |
| S22-6.02 | 14 | S | Align to the conical seats locking into a min of | 1 | 13NOV07 | 13NOV07 | | 209 | 0.00 | | | | | | | | | | |
| S22-6.03 | 14 | S | Measure monuments on fixture and on the walls. | 2 | 14NOV07 | 15NOV07 | | 209 | 0.00 | | | | | | | | | | |
| S22-6.04 | 14 | S | Place alumina grind inboard weld shims on coil. | 2 | 16NOV07 | 19NOV07 | | 209 | 3,204.40 | | | | | | | | | | |
| S22-6.05 | 14 | S | Lower the Type-B coil onto the Type-A coil. | 1 | 20NOV07 | 20NOV07 | | 209 | 1,602.20 | | | | | | | | | | |
| S22-6.06 | 14 | S | Meas monuments on A coil. Jack to within .002" | 1 | 21NOV07 | 21NOV07 | | 209 | 0.00 | | | | | | | | | | |
| S22-6.07 | 14 | S | Perform the X-Y positioning of the B coil. | 1 | 22NOV07 | 22NOV07 | | 209 | 0.00 | | | | | | | | | | |
| S22-6.08 | 14 | S | Install studs, supernuts, torque to 50% of final | 2 | 23NOV07 | 26NOV07 | | 209 | 3,204.40 | | | | | | | | | | |
| S22-6.09 | 14 | S | "wiggle" test Tighten bolt and recheck. | 1 | 27NOV07 | 27NOV07 | | 209 | 1,602.20 | | | | | | | | | | |
| S22-6.1 | 14 | S | Meas tooling balls on both coils. max devi .007" | 5 | 28NOV07 | 06DEC07 | | 209 | 0.00 | | | | | | | | | | |
| S22-6.11 | 14 | S | adjust shims locally. Re-torque all studs to 50% | 3 | 07DEC07 | 11DEC07 | | 209 | 4,806.60 | | | | | | | | | | |
| S22-6.12 | 14 | S | Install bushing. | 2 | 12DEC07 | 13DEC07 | | 209 | 2,403.30 | | | | | | | | | | |
| S22-6.13 | 14 | S | Complete tightening of flange bolts to 100%. | 1 | 14DEC07 | 14DEC07 | | 209 | 1,602.20 | | | | | | | | | | |
| S22-6.14 | 14 | S | Measure the tooling balls on both coils. | 3 | 17DEC07 | 19DEC07 | | 209 | 0.00 | | | | | | | | | | |
| S22-6.15 | 14 | S | Scan the "B" flange of Type-B coil | 1 | 20DEC07 | 20DEC07 | | 209 | 1,602.20 | | | | | | | | | | |
| AB - C Assembly | | | | | | | | | | | | | | | | | | | |
| S22-7.01 | 14 | S | "A/B" assy "A" coil dwn, 40deg fixt.Obtain fiduc | 2 | 21DEC07 | 02JAN08 | | 209 | 3,204.40 | | | | | | | | | | |
| Station 3 Setup/Preparations/General | | | | | | | | | | | | | | | | | | | |
| R1810-3104 | 12 | S | Procure 3 legged actuator system | 20 | 01OCT07* | 26OCT07 | 1 | 270 | 56,244.00 | | | | | | | | | | |
| R1810-3106 | 13 | S | Load test 3 ledged actuator system | 3 | 29OCT07 | 31OCT07 | 1 | 270 | 7,690.56 | | | | | | | | | | |
| R1810-3108 | 14 | S | Procure ,Fabricate 3 legged actuator lift fixtur | 20 | 01OCT07* | 26OCT07 | 1 | 265 | 7,848.00 | | | | | | | | | | |
| R1810-3112 | 15 | S | Load Test 3 legged actuator lift fixtur | 8 | 29OCT07 | 07NOV07 | 1 | 265 | 10,254.08 | | | | | | | | | | |
| R1810-3150 | 16 | S | Fab New legs | 4 | 01OCT07* | 04OCT07 | 1 | 279 | 5,127.04 | | | | | | | | | | |
| R1810-3103 | 17 | S | Install station 3 platforms (8 required) | 4 | 30OCT07 | 02NOV07 | 1 | 262 | 22,052.32 | | | | | | | | | | |
| R1810-3107 | 17 | S | Test out station 3 equipment and procedures | 4 | 05NOV07 | 08NOV07 | 1 | 262 | 13,080.00 | | | | | | | | | | |
| R1810-3109 | 17 | S | Begin assy of first field period assy | 2 | 09NOV07 | 12NOV07 | 1 | 262 | 52,320.00 | | | | | | | | | | |
| R1810-2109 | 01 | S | Begin Station 3 | 0 | 23JAN08 | | 1 | 220 | 0.00 | | | | | | | | | | |
| S31-1.01 | 11 | S | Install Station 3 site monuments | 3 | 23JAN08 | 25JAN08 | 1 | 220 | 7,422.60 | | | | | | | | | | |