

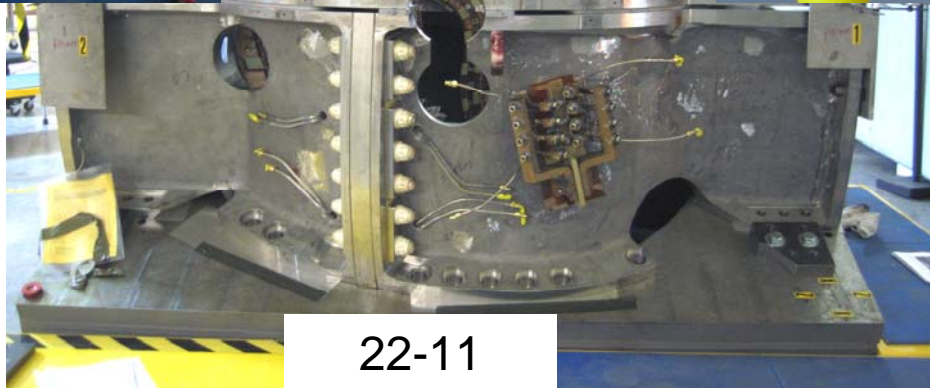
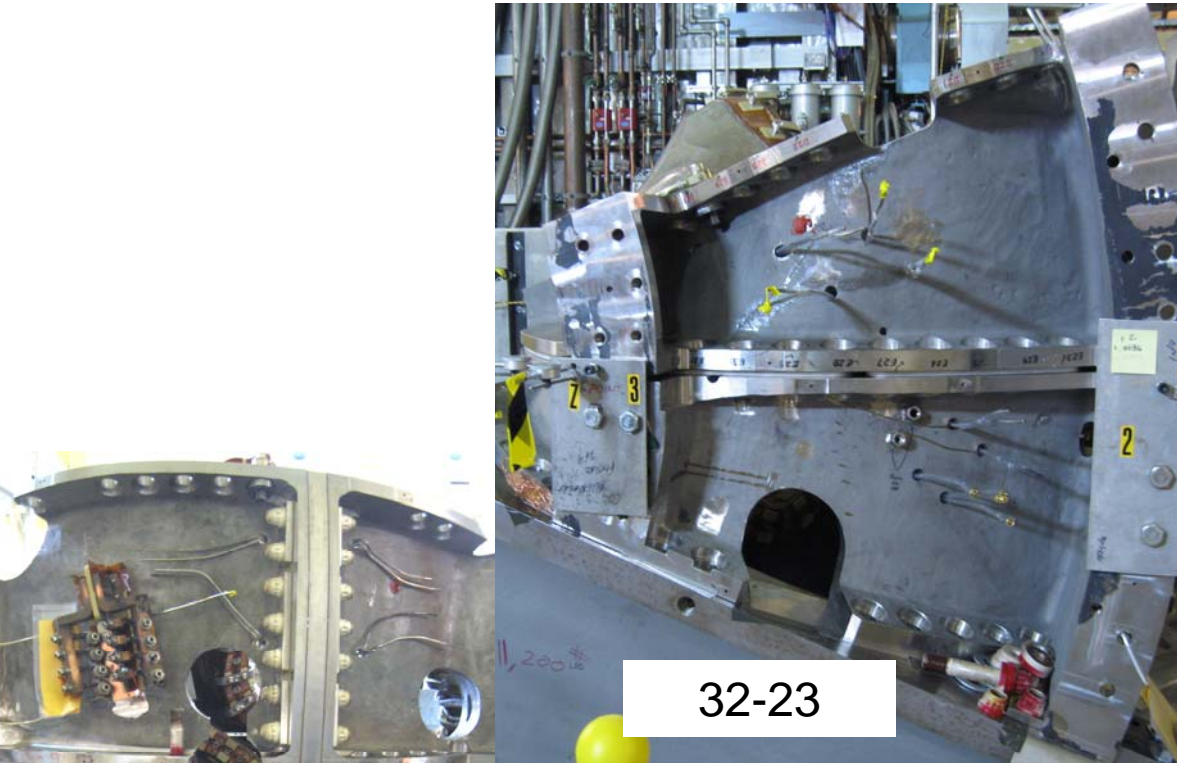
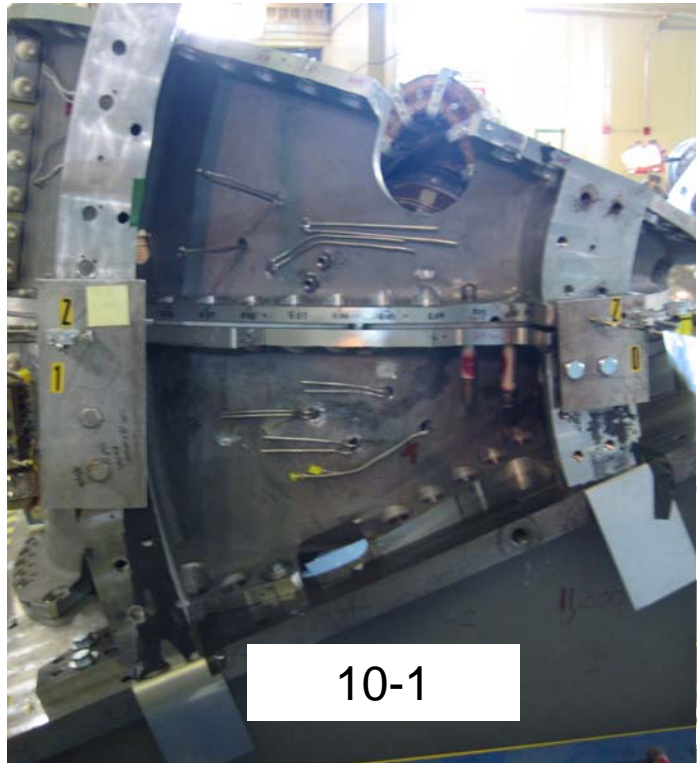
MODULAR COIL FLANGES

Catalog by M. Viola

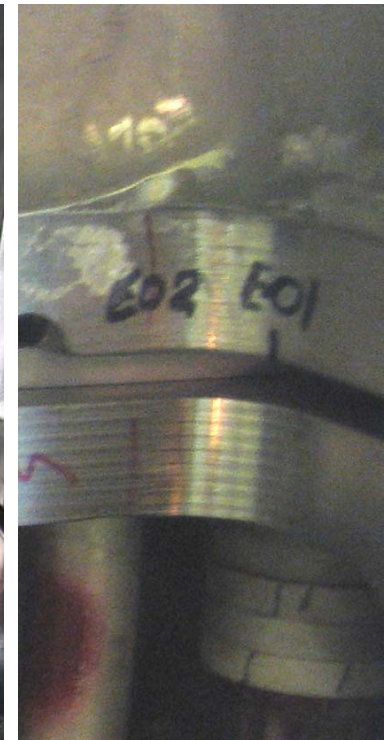
Legend for the following table

- The following table represents the flange to flange connection on each coil.
- “T” means it is a tapped hole and
- “H” means that it is a through hole
- “OK” means that an HL tensioner (7” tall by 4.6” diameter) by Sweeney would fit
- “No” means that it wouldn’t due to either “D” diameter interferences or “L” length interferences.

C COIL – C-C (mated)



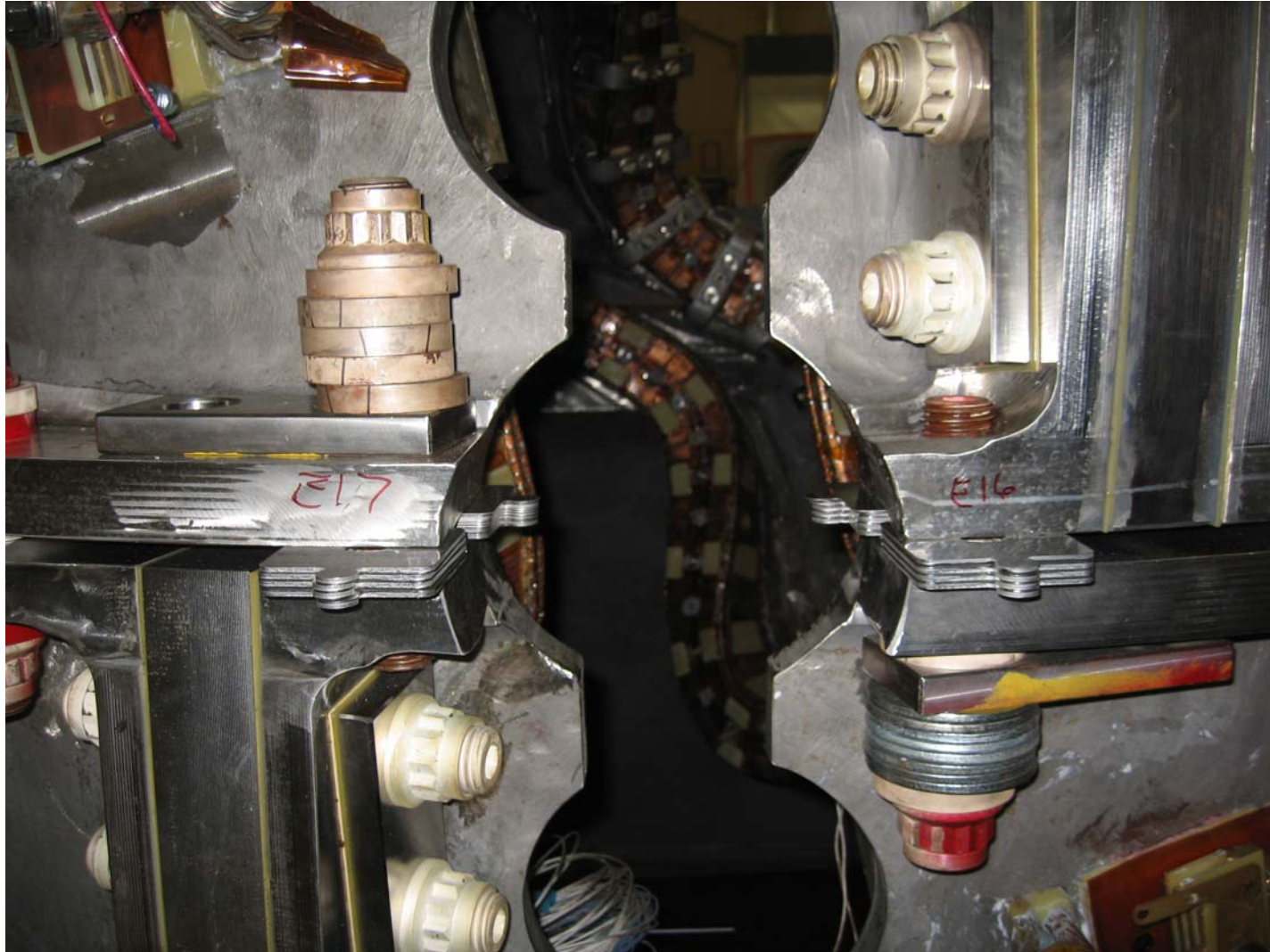
C COIL – C-C 1-10 (right to left)



C COIL – C-C 11-15 (right to left)



C COIL – C-C 16-17 (right to left)



C COIL – C-C 18-22 (right to left)



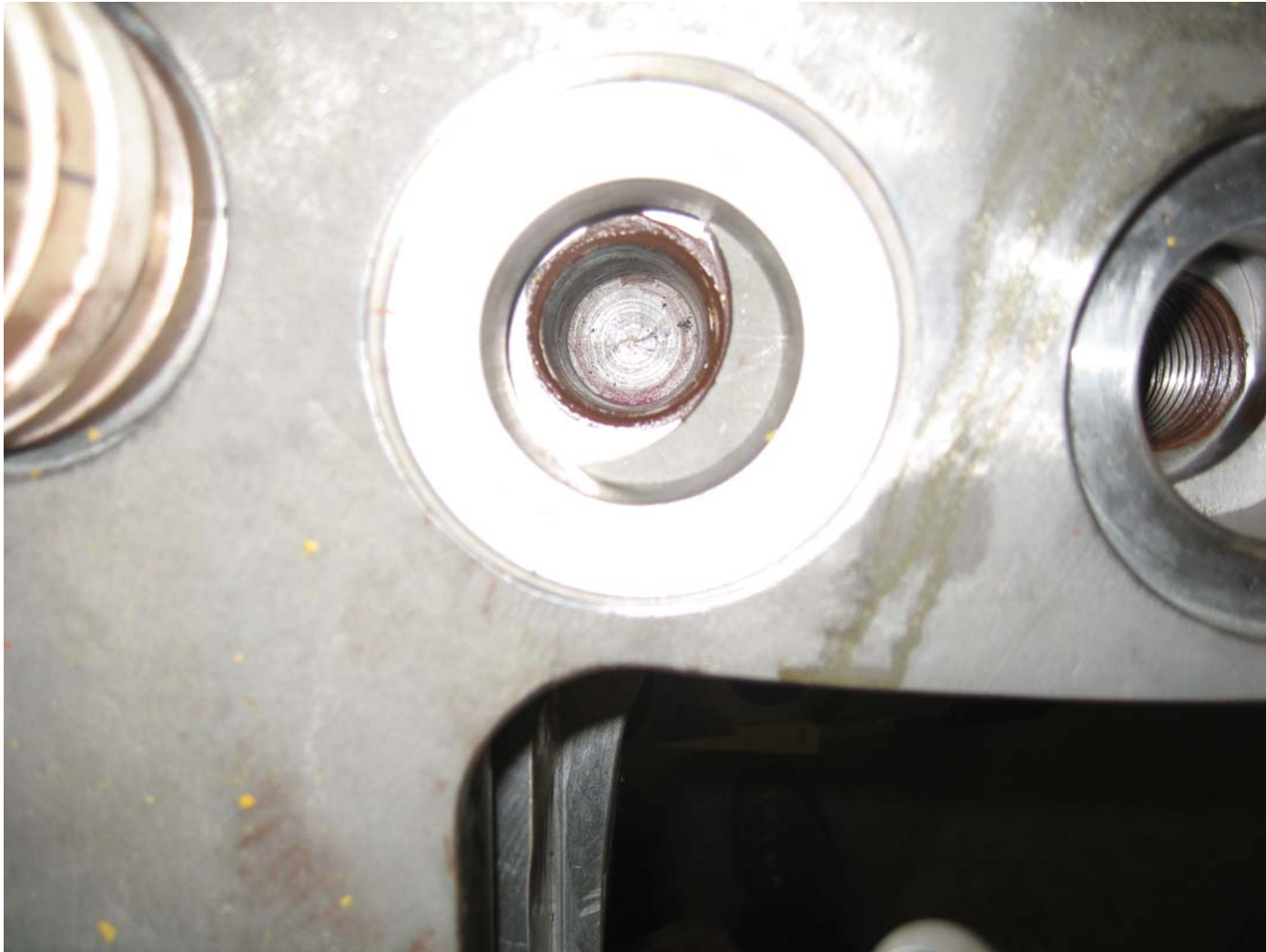
C COIL – C-C 23-29 (right to left)



C COIL – C-C 30-32 (right to left)

NEED PICTURE

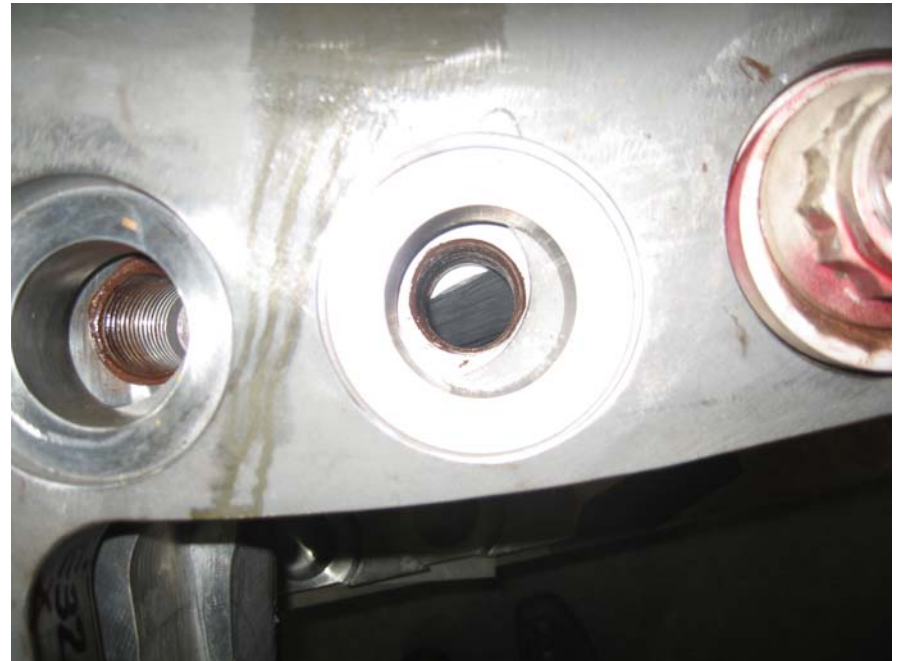
C COIL – C-C 30-32 (right to left)



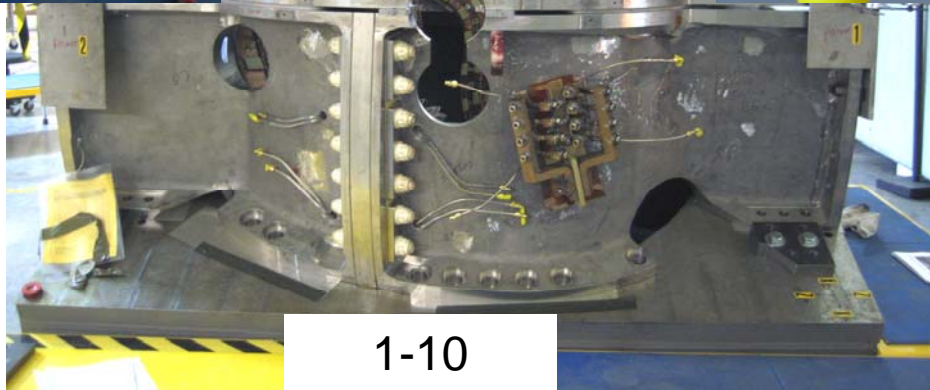
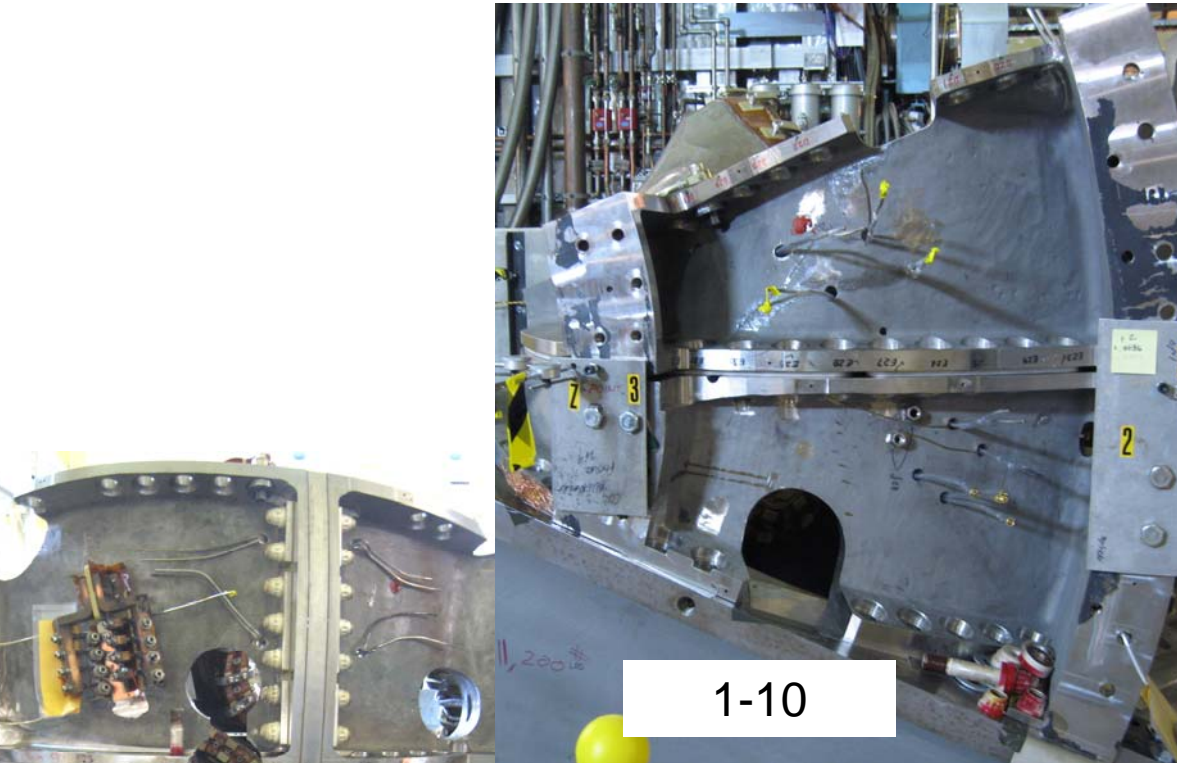
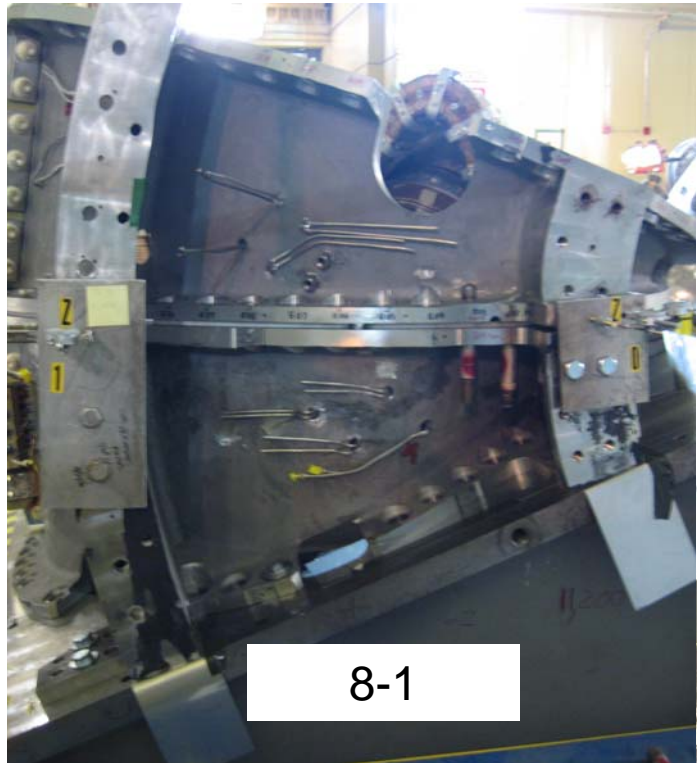
C COIL – C-C 30 & 31

Possible hole errors?

- Nose aligned and flanged clocked by eye – other holes appear close to center but these have large offsets



C Coil – C-B



C COIL – C-B 1-5 (right to left)



C COIL – C-B 6-8 (right to left)



C COIL – C-B 9-14 (right to left)



C COIL – C-B 15-16 (right to left)



C COIL – C-B 17-21 (right to left)



C COIL – C-B 22-23 (right to left)



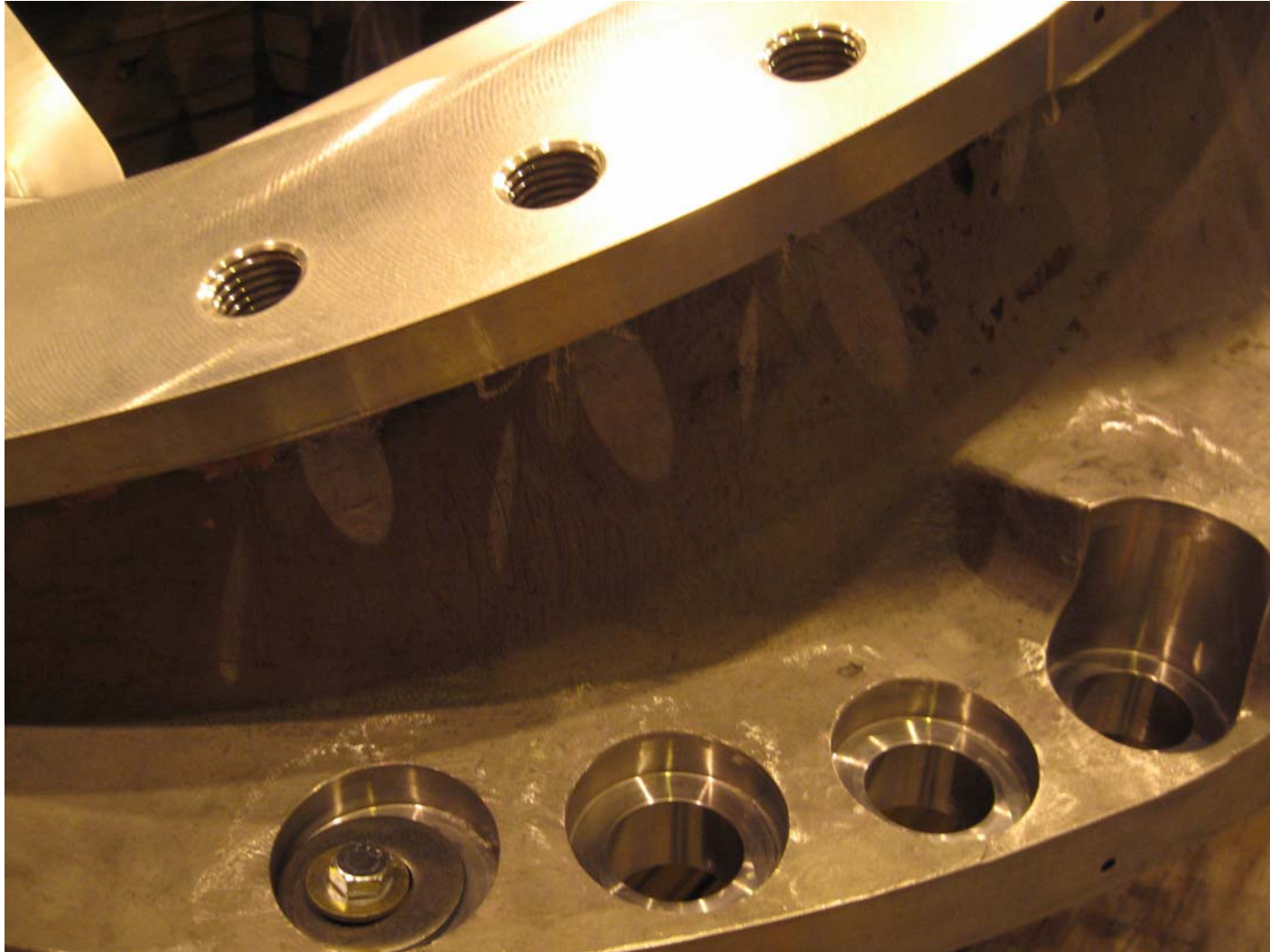
C COIL – C-B 24-26 (right to left)



**B COIL – C-B (Top) all tapped
except 27-29 & A-B (Bottom)**



B COIL – C-B (Top) all tapped except
27-29 & A-B (Bottom) 1-4



B COIL – A-B (Bottom) 5-9; 10 tapped



B COIL – A-B (Bottom) 9 interfered with by foot



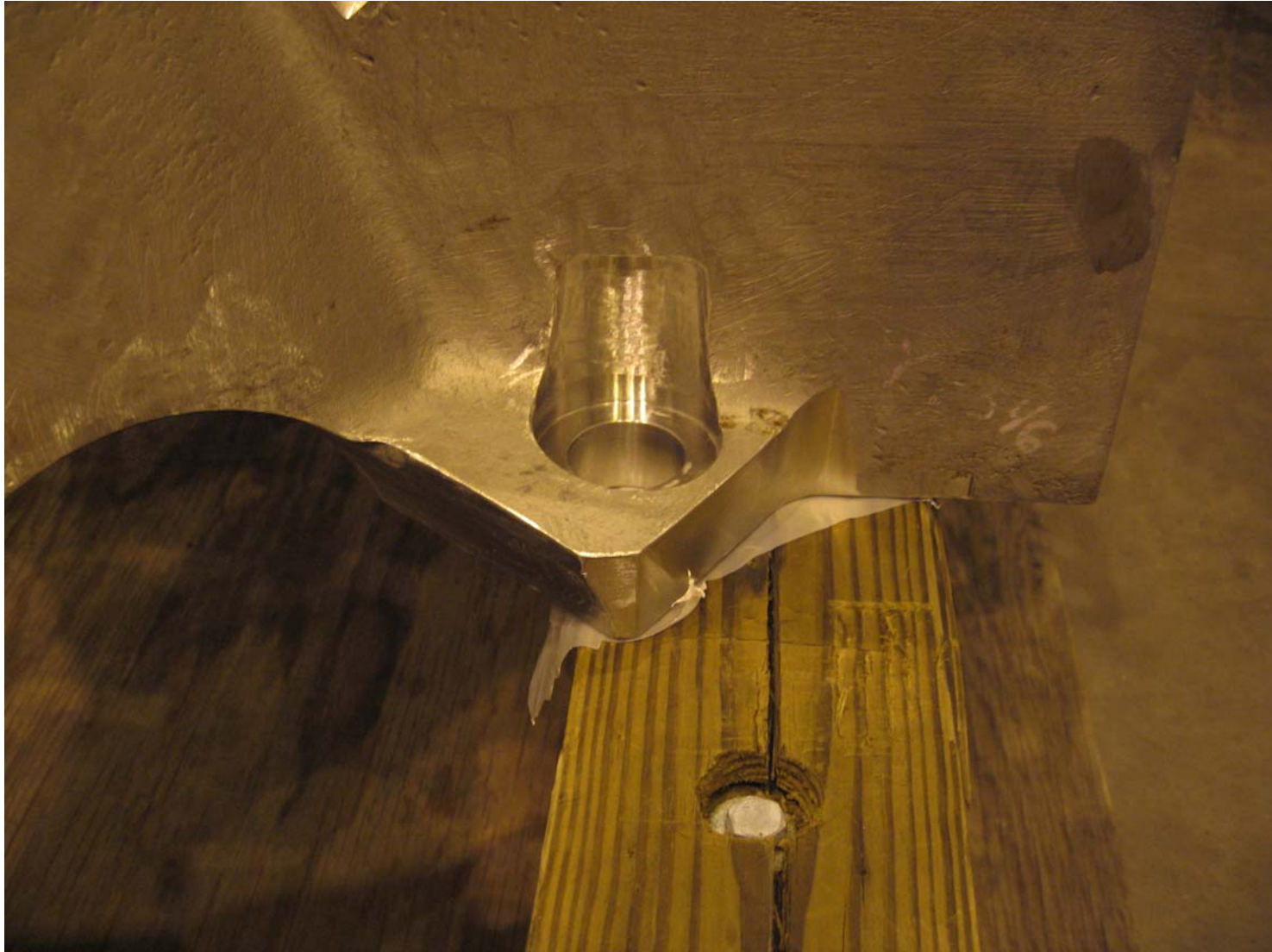
B COIL – A-B (Bottom) 11-15



**B COIL – A-B (Bottom) 16 tapped;
17 shown**



B COIL – A-B (Bottom) 18



B COIL – C-B (Top) & A-B (Bottom)



B COIL – A-B (Bottom) 19-21



B COIL – A-B (Bottom) 22-24



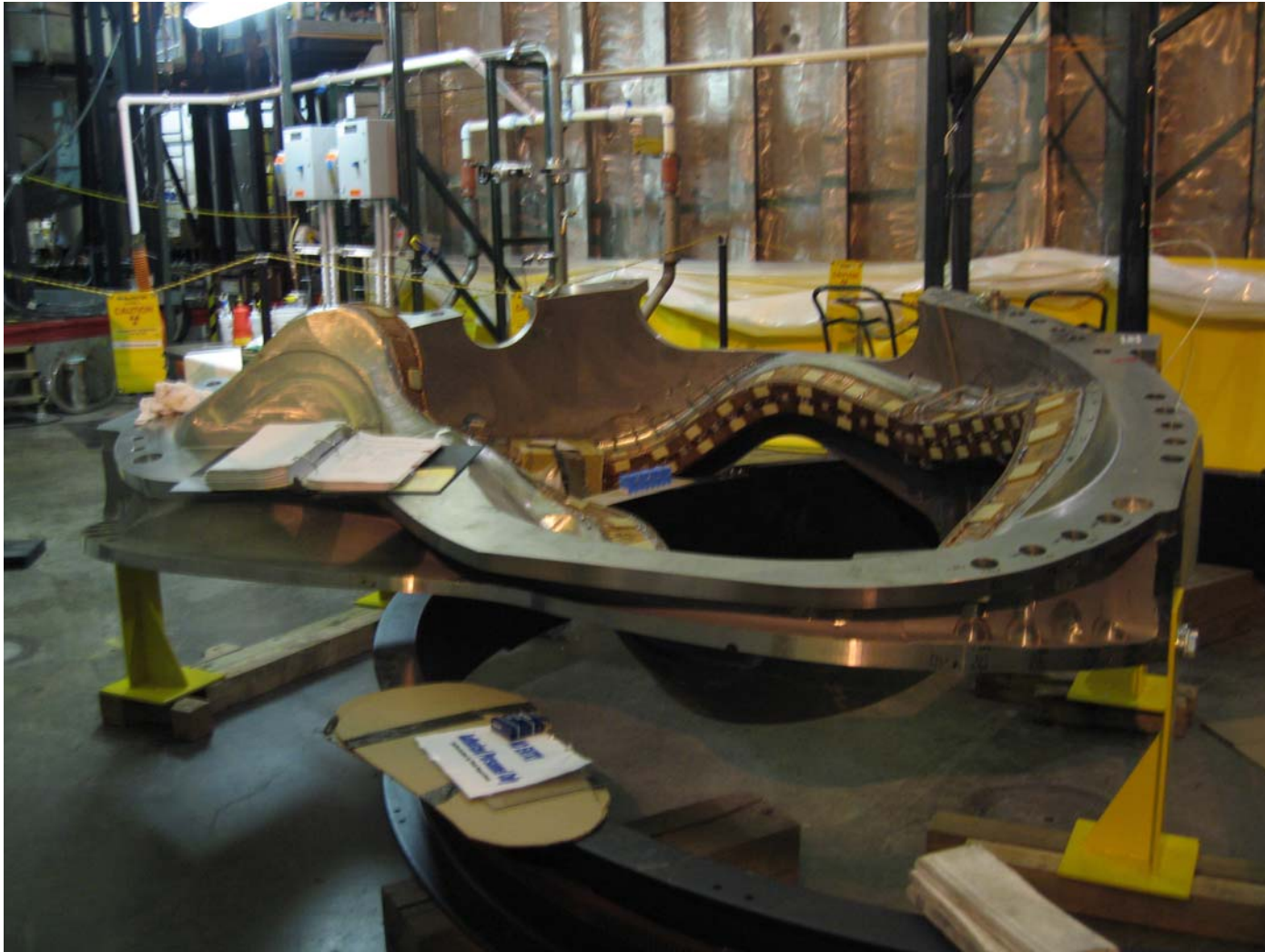
B COIL – A-B (Bottom) 25-26



B COIL – C-B (Top) 27-29



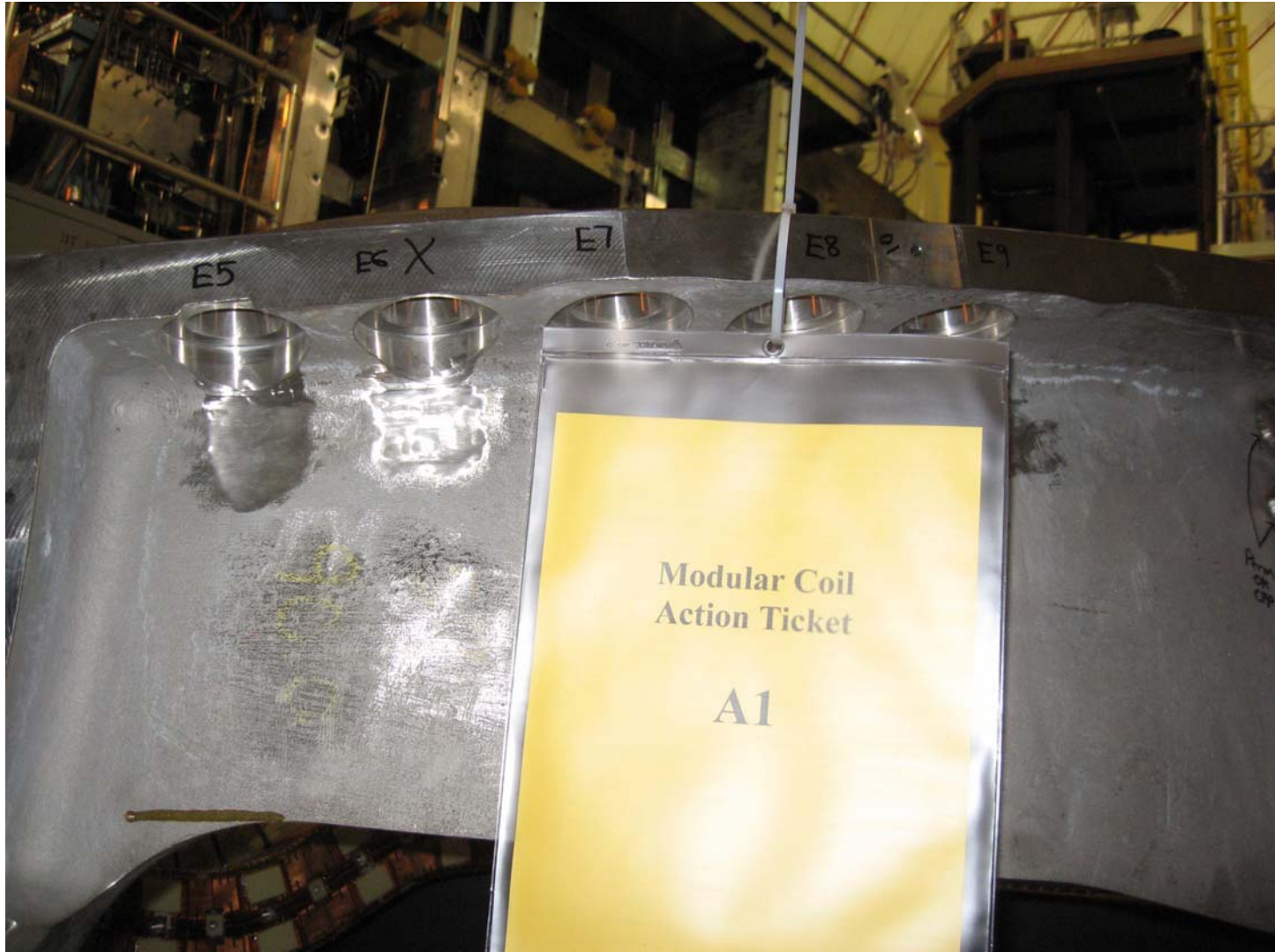
A COIL – A-B (Top) & A-A (Bottom)



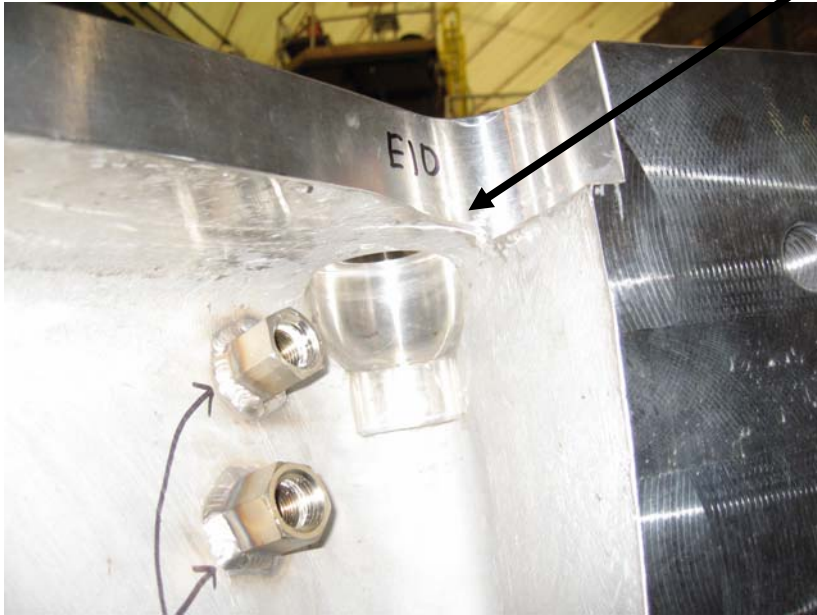
A COIL – A-B (Top) 1-4



A COIL – A-B 5-9



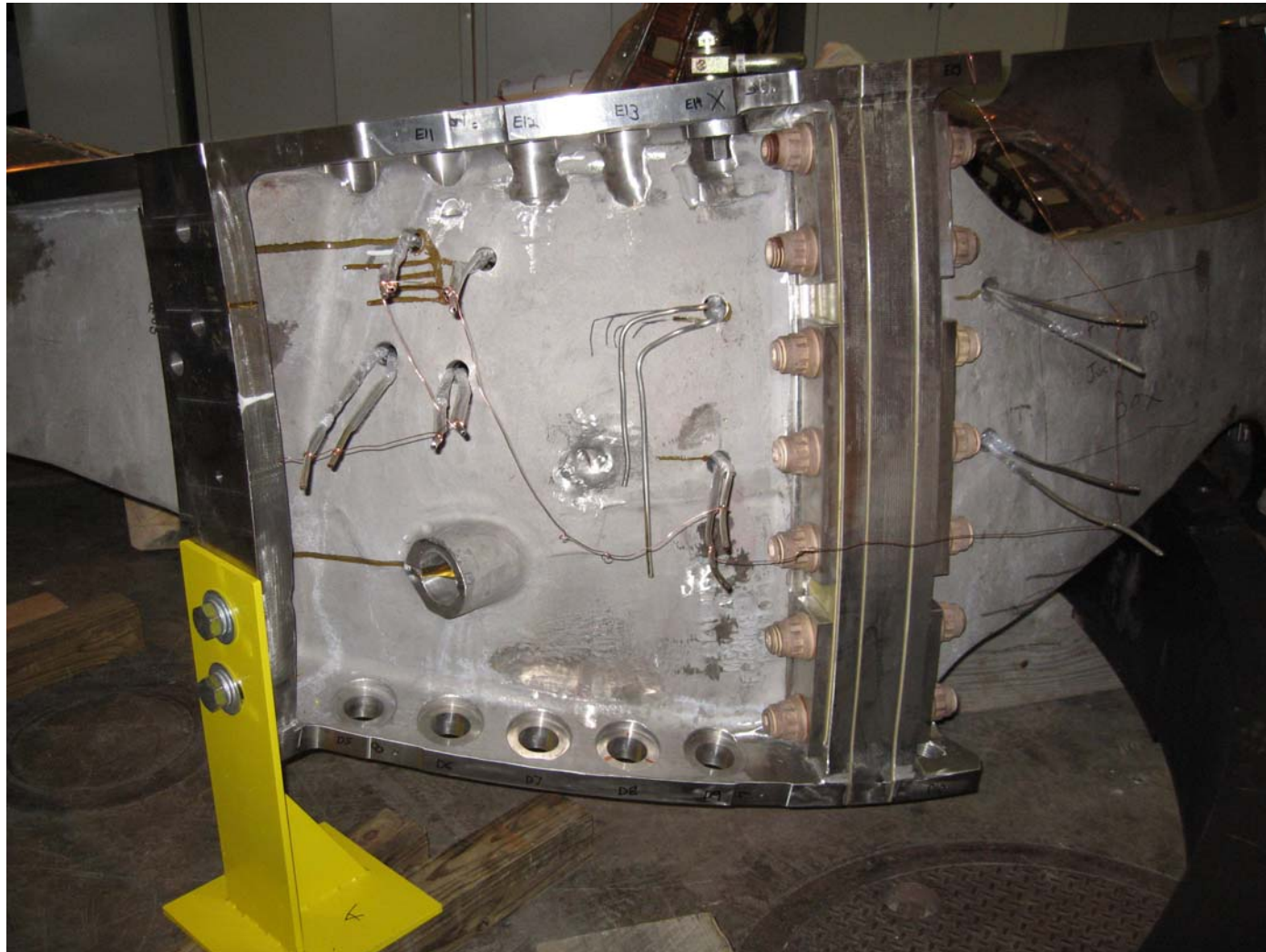
A COIL – A-B 10 or Extra hole?



A COIL – A-B 10?-14



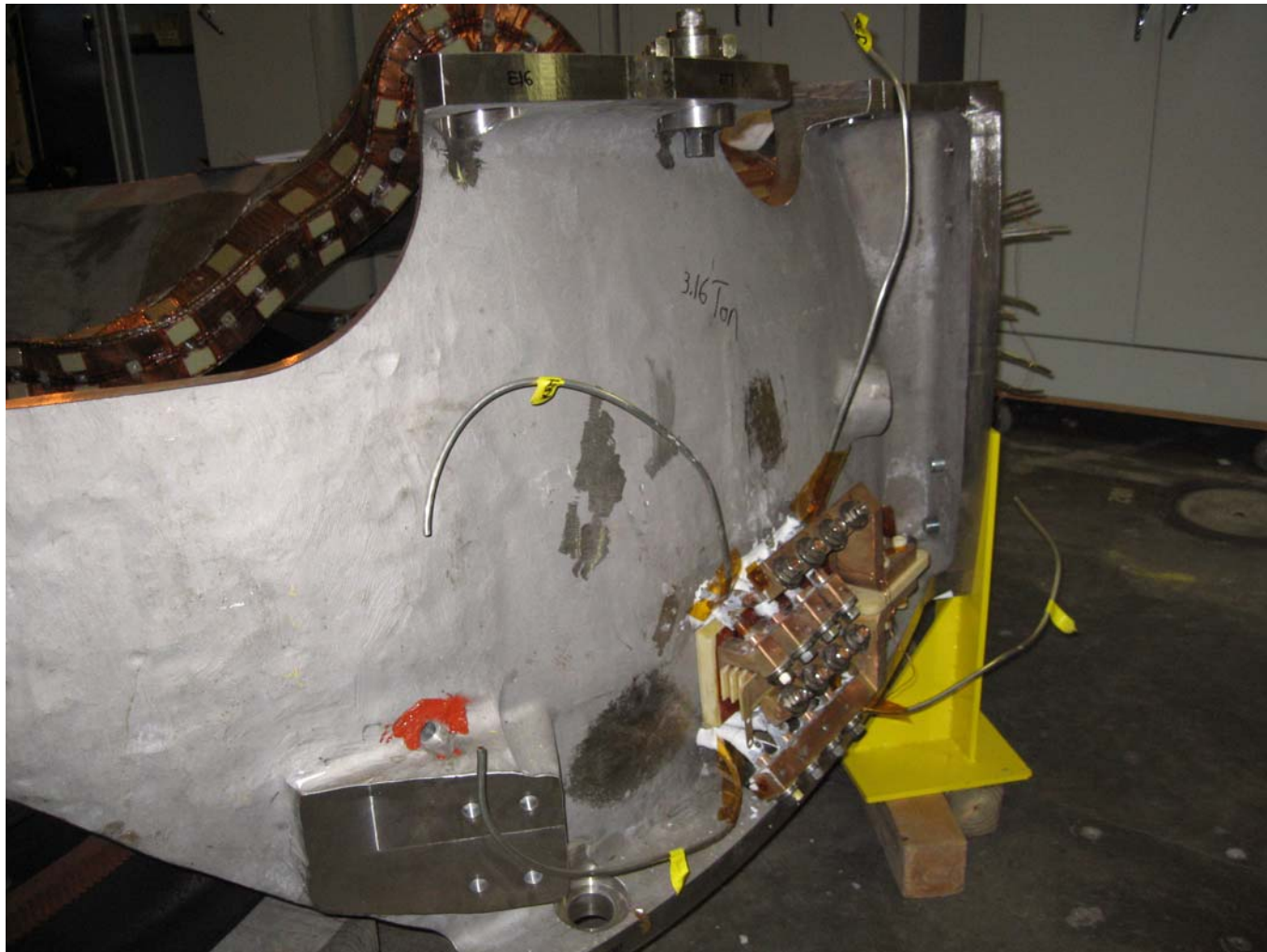
A COIL – A-B (Top) 10-14; 15 tapped



A COIL – A-B (Top) 15 tapped



A COIL – A-B (Top) 16-18 & A-A (Bottom) 11-16



A COIL – A-B (Top) 16-18



A COIL – A-B 19-21



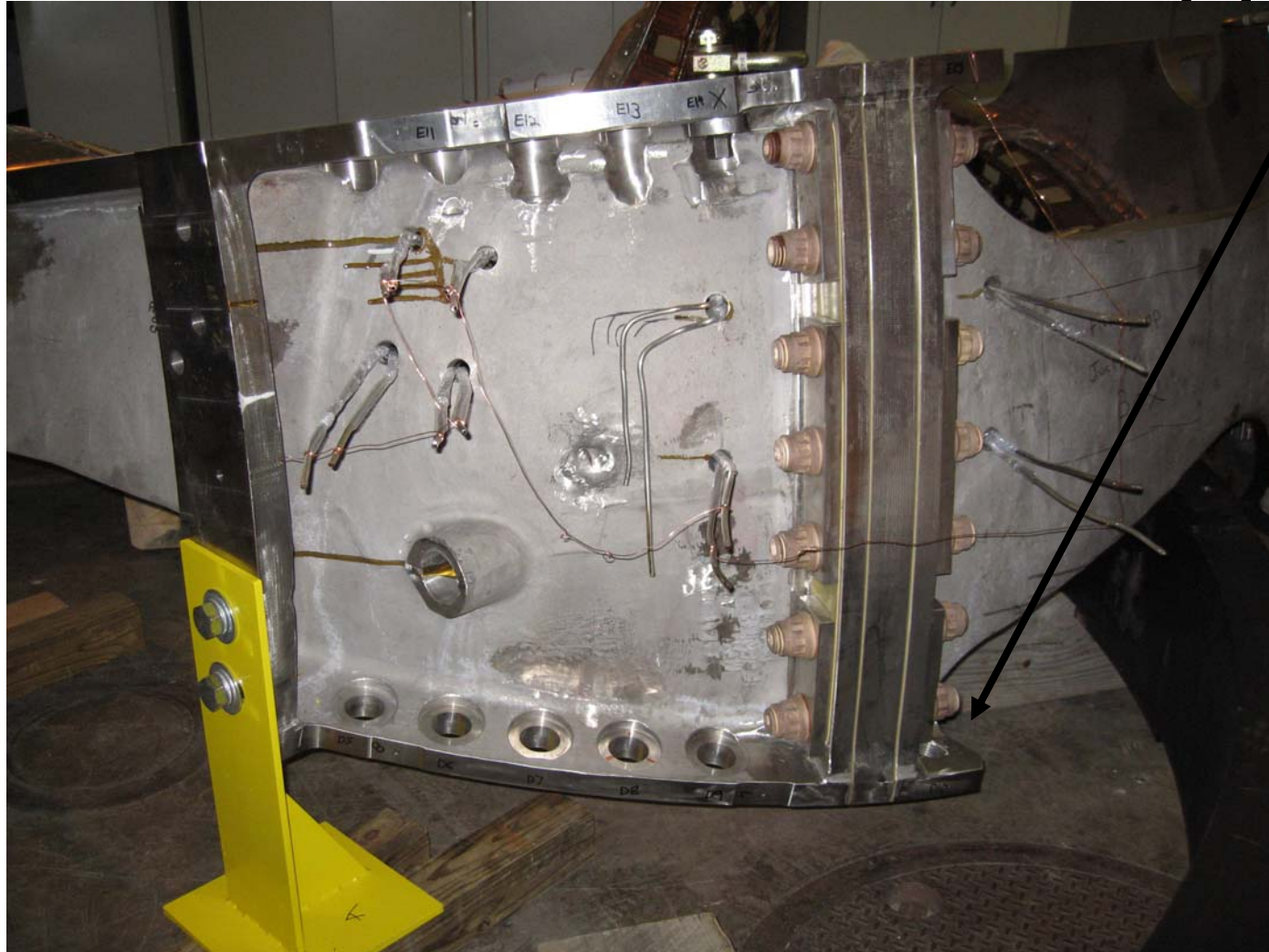
A COIL – A-B 22-24



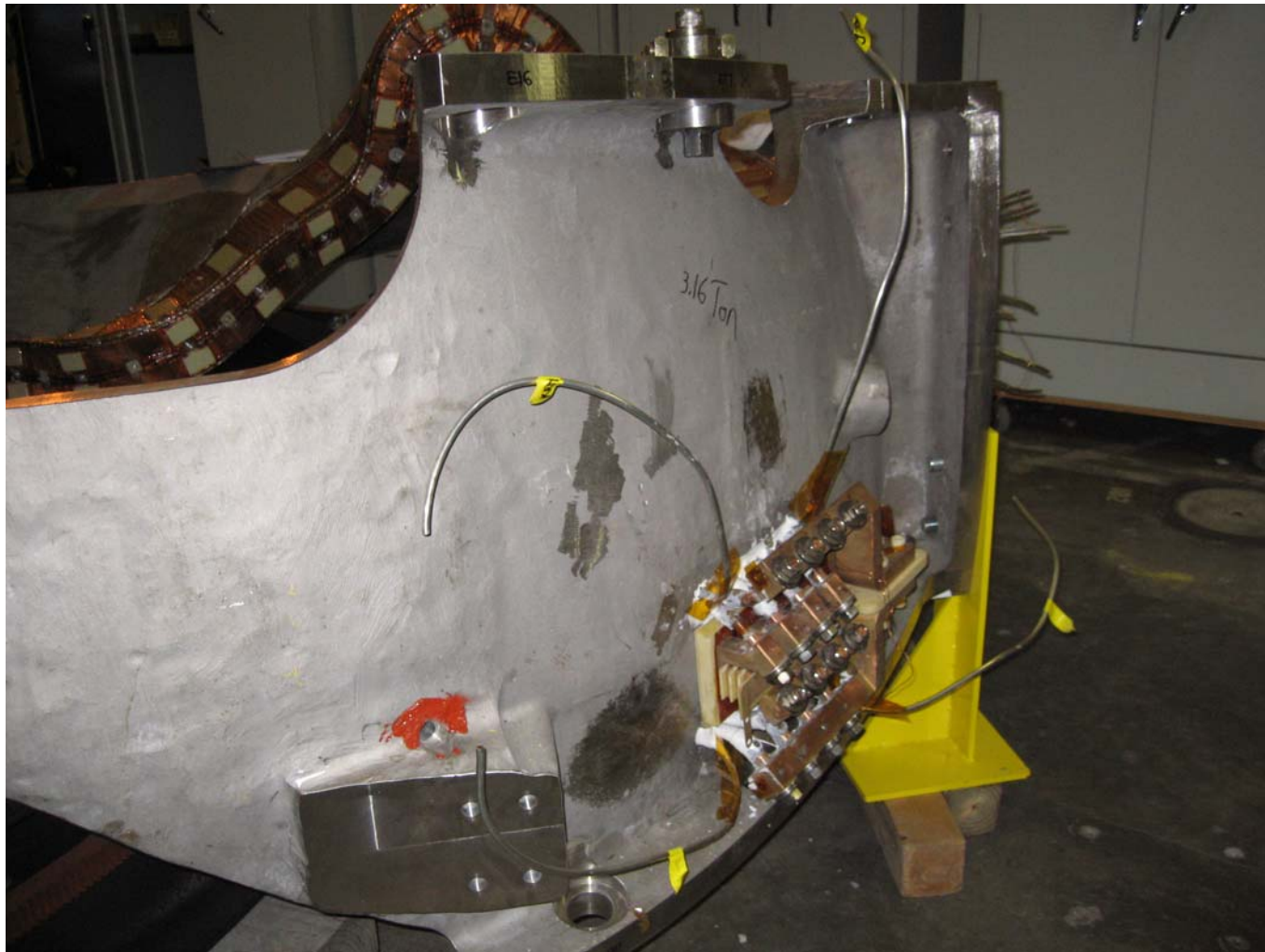
A COIL -A-A (Bottom) 1-4



A COIL – A-A (Bottom) 5-9; 10 tapped



A COIL – A-A (Bottom) 11-16



A COIL – A-A 11-13



A COIL – A-A 14-16



A COIL – A-B (Top) 25-26 & A-A (Bottom) 17-20



A COIL – A-B (Top) 25-26 & A-A (Bottom) 17-20

