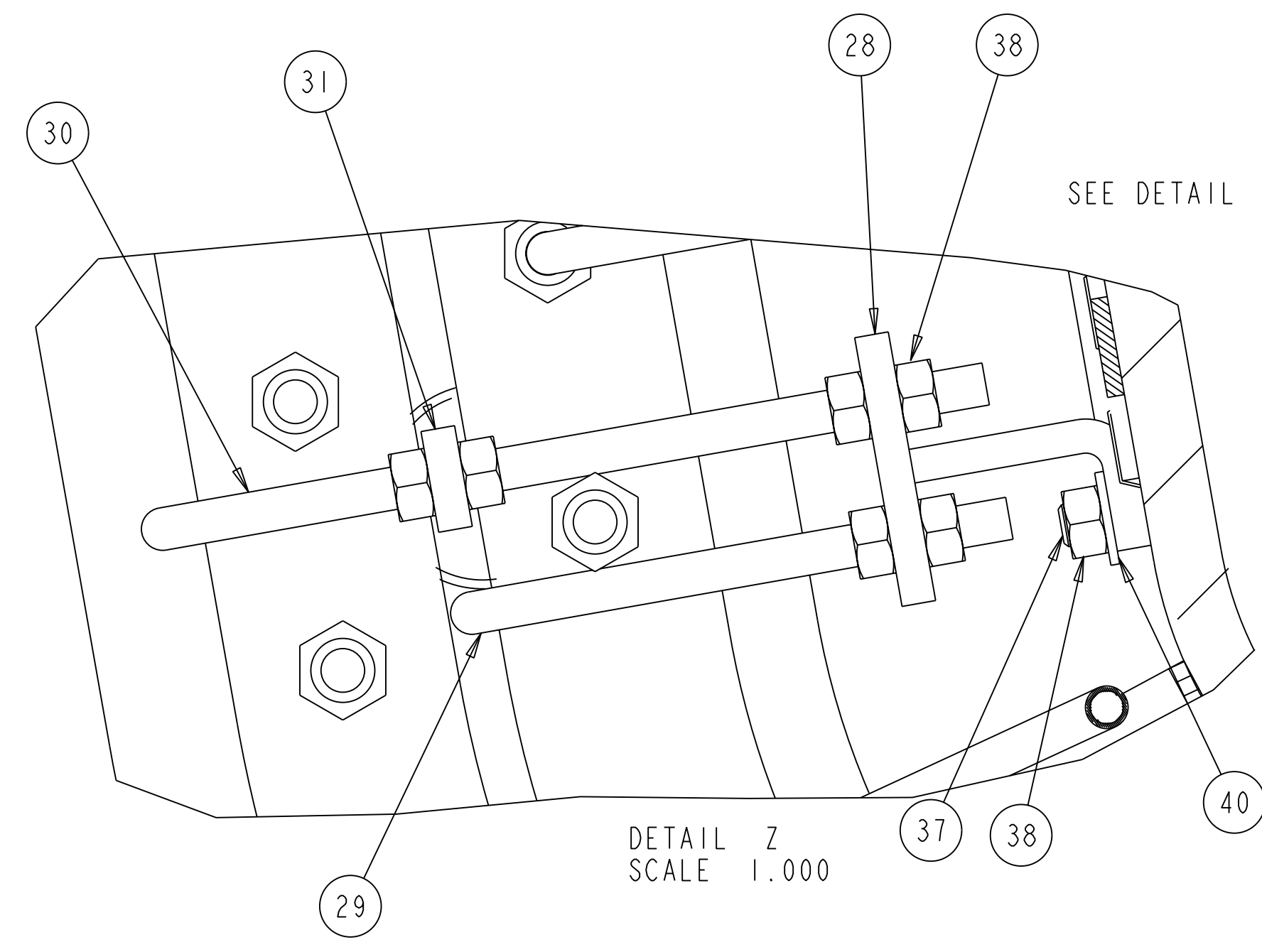
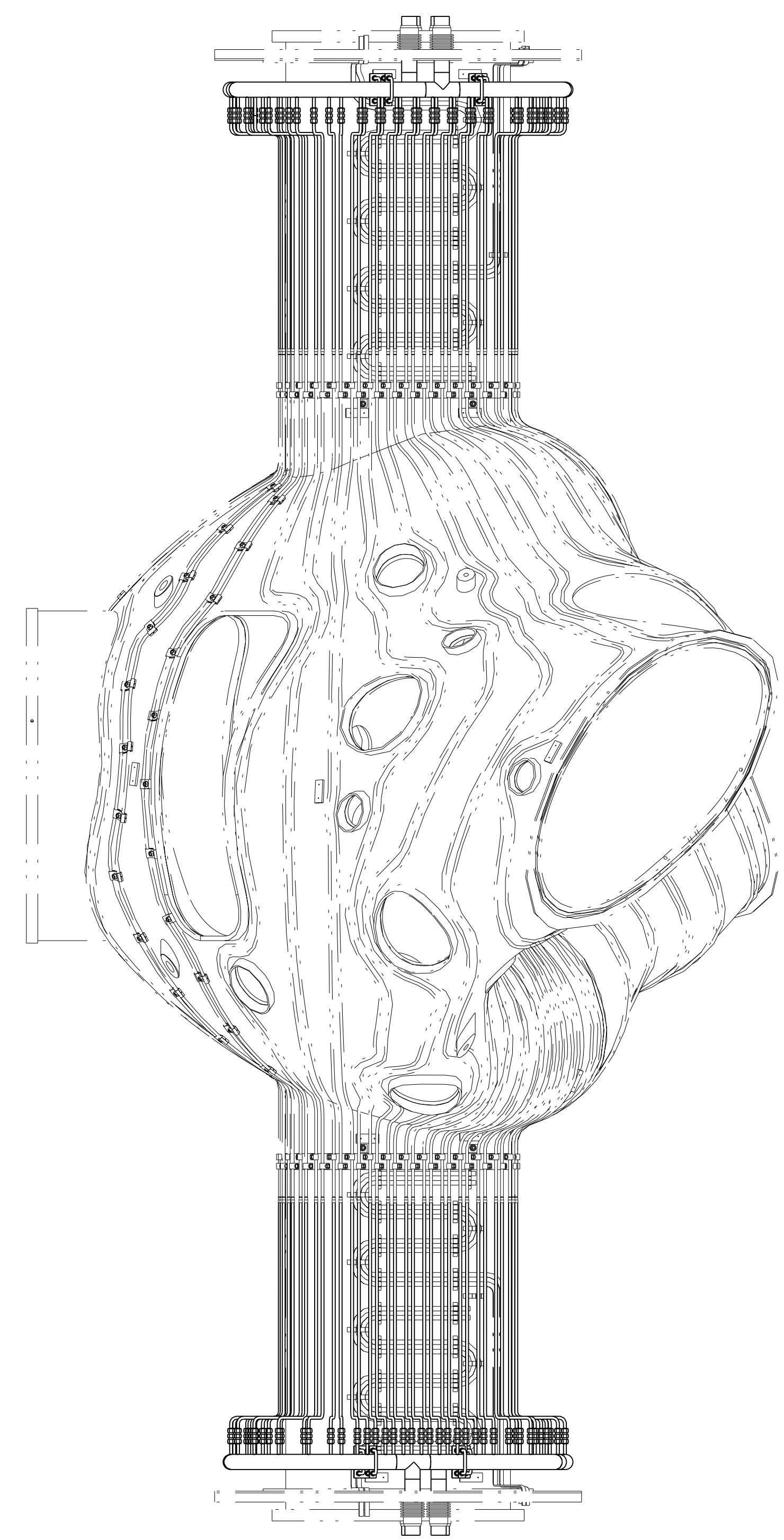
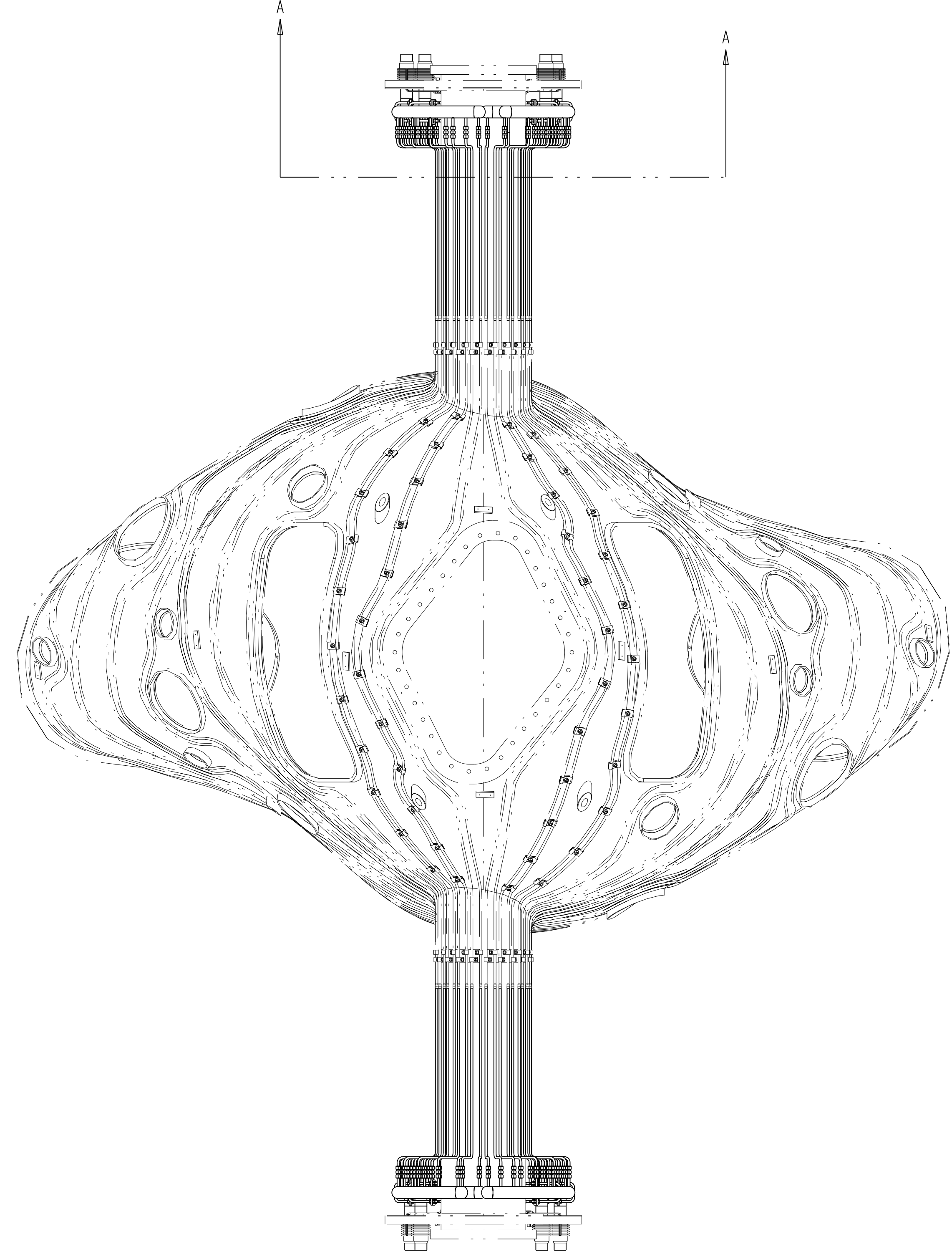
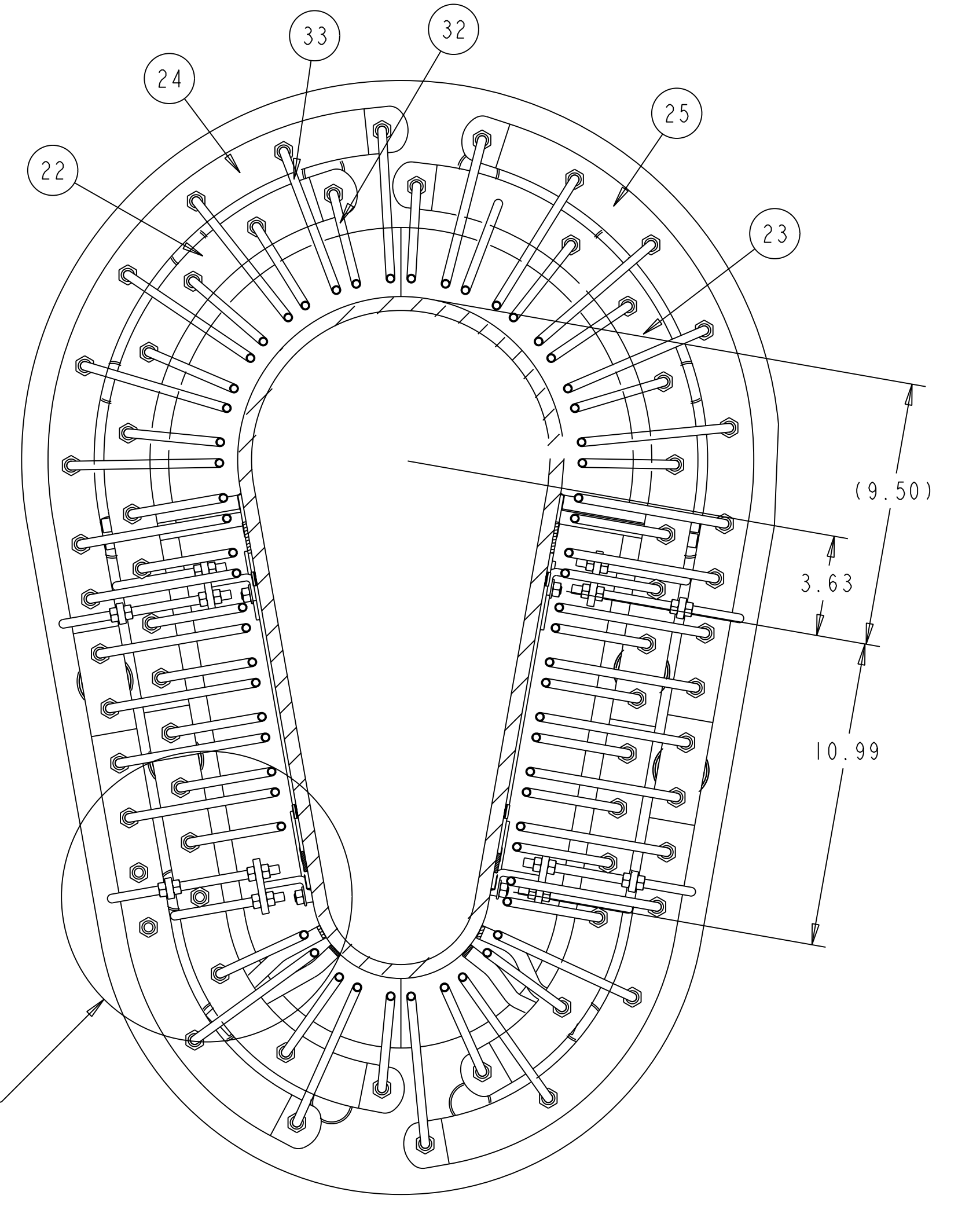
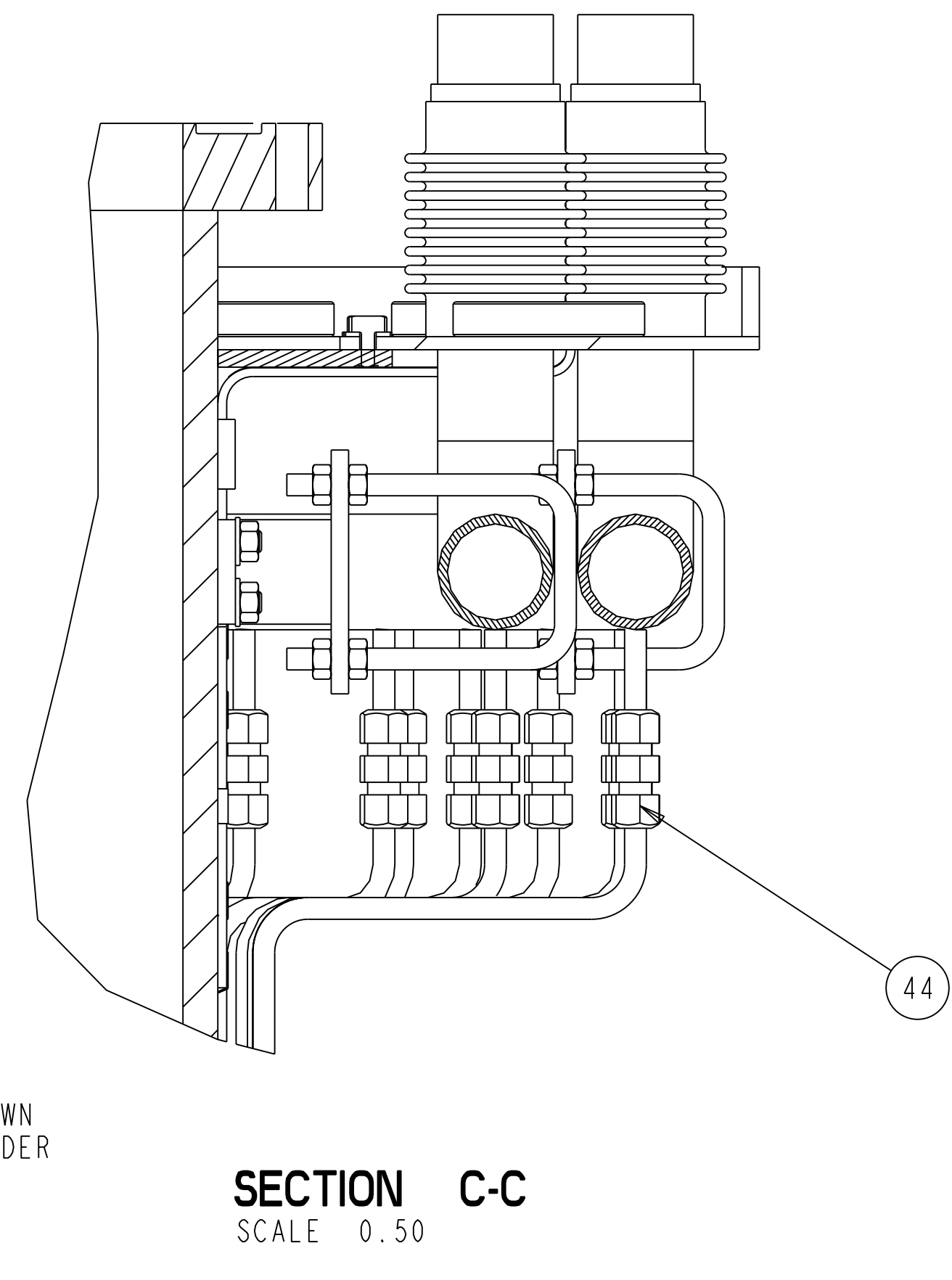


CENTER AND ALIGN HEADERS AS SHOWN THRU CRYOSTAT FLANGE. MOVE HEADER BRKTS TO DIMENSIONS SHOWN AND LOCATE WELD STUDS USING HEADER BRKTS AS TEMPLATES.



SEE DETAIL Z

QTY	PART OR IDENTIFYING NO	NOMENCLATURE OR DESCRIPTION	MATERIAL	SPECIFICATION	FIND NO
44	5182K719	316 SS YOR-LOK COMPRESSION TUBE FITTING COUPLING FOR 5/16" TUBE OD	McMASTER-CARR ATLANTA, GA 30336-2852 (404) 346-7000		44
40	91950A030	FLAT WASHER .688 OD X .344 ID X .064 THK 316 STAINLESS STL			40
38	94819A046	HEX NUT 5/16-18 UNC - ASME B18.2.2 316 SST			38
37	NCSX-PRL-12-002-00	5/16-18UNC X .75 LG CD INCONEL WELD STUD			37
35	SE123-171	SUPPORT BRKT B WELDMENT			35
34	SE123-170	SUPPORT BRKT A WELDMENT			34
33	SE123-169-2	VV HEATING/COOLING SUPPLY LINE DETAIL			33
32	SE123-169-1	VV HEATING/COOLING SUPPLY LINE DETAIL			32
31	SE123-168-6	U-BRACKET LONG STOP			31
30	SE123-168-5	U-BRACKET LONG			30
29	SE123-168-4	U-BRACKET			29
28	SE123-168-1	HEADER BRACKET STANDOFF WELDMENT			28
25	SE123-163	OUTER HEADER B			25
24	SE123-162	OUTER HEADER A			24
23	SE123-161	INNER HEADER B			23
22	SE123-160	INNER HEADER A			22
2	SE121-008	VACUUM VESSEL HEATING / COOLING ASSEMBLY - PHASE III			2
1	-1	VACUUM VESSEL HEATING / COOLING ASSEMBLY - PHASE III			1

NOTE BILL OF MATERIAL REFERENCES BOM ON DRAWING SE123-049

REV	DESCRIPTION	BY	DATE	CHK	DEPT	DATE	PE	REQ	DATE	ORNL	DOE	DATE

SCALE	NOTED	DES	DATE
TOLERANCES UNLESS OTHERWISE SPECIFIED		P. GORANSON	09/05
FRACTIONS		MT BROWN	09/05
XX DECIMALS ±.01			
XXX DECIMALS ±.005			
ANGLES ±0°15'			
BREAK SHARP EDGES OR MAX FINISH .125 UNLESS OTHERWISE SPECIFIED			

VERSION NO.	PLANT	BLDG	FL	SHT	OF	TYPE	CLASS
1+	ORNL	5700	3	1	1	A	U

REVISION LEVEL	DATE	WIP

NO REPRESENTATION OR WARRANTY, EXPRESSED OR IMPLIED, IS MADE AS TO THE ACCURACY, COMPLETENESS OR USEFULNESS OF THE INFORMATION OR STATEMENTS CONTAINED IN THESE DRAWINGS, OR THAT THE USE OR DISCLOSURE OF ANY INFORMATION, APPARATUS, METHOD OR PROCESS DISCLOSED IN THESE DRAWINGS MAY NOT INFRINGE PRIVATE RIGHTS OF OTHERS. NO LIABILITY IS ASSUMED WITH RESPECT TO THE USE OF, OR FOR DAMAGES RESULTING FROM THE USE OF, ANY INFORMATION, APPARATUS, METHOD OR PROCESS DISCLOSED IN THESE DRAWINGS. DRAWINGS MADE AVAILABLE FOR INFORMATION TO BIDDER ARE NOT TO BE USED FOR OTHER PURPOSES, AND ARE TO BE RETURNED UPON REQUEST OF THE FORWARDING CONTRACTOR.

P THIS DRAWING PRODUCED ON PRO-ENGINEER

- NOTES
1. INTERPRET DRAWING PER MECHANICAL ENGINEERING DRAFTING STANDARD ES-3.1-2.
 2. INTERPRET DIMENSIONS AND TOLERANCES PER ANSI Y14.5M.
 3. DIMENSIONS ARE IN INCHES

B SE12-009

A