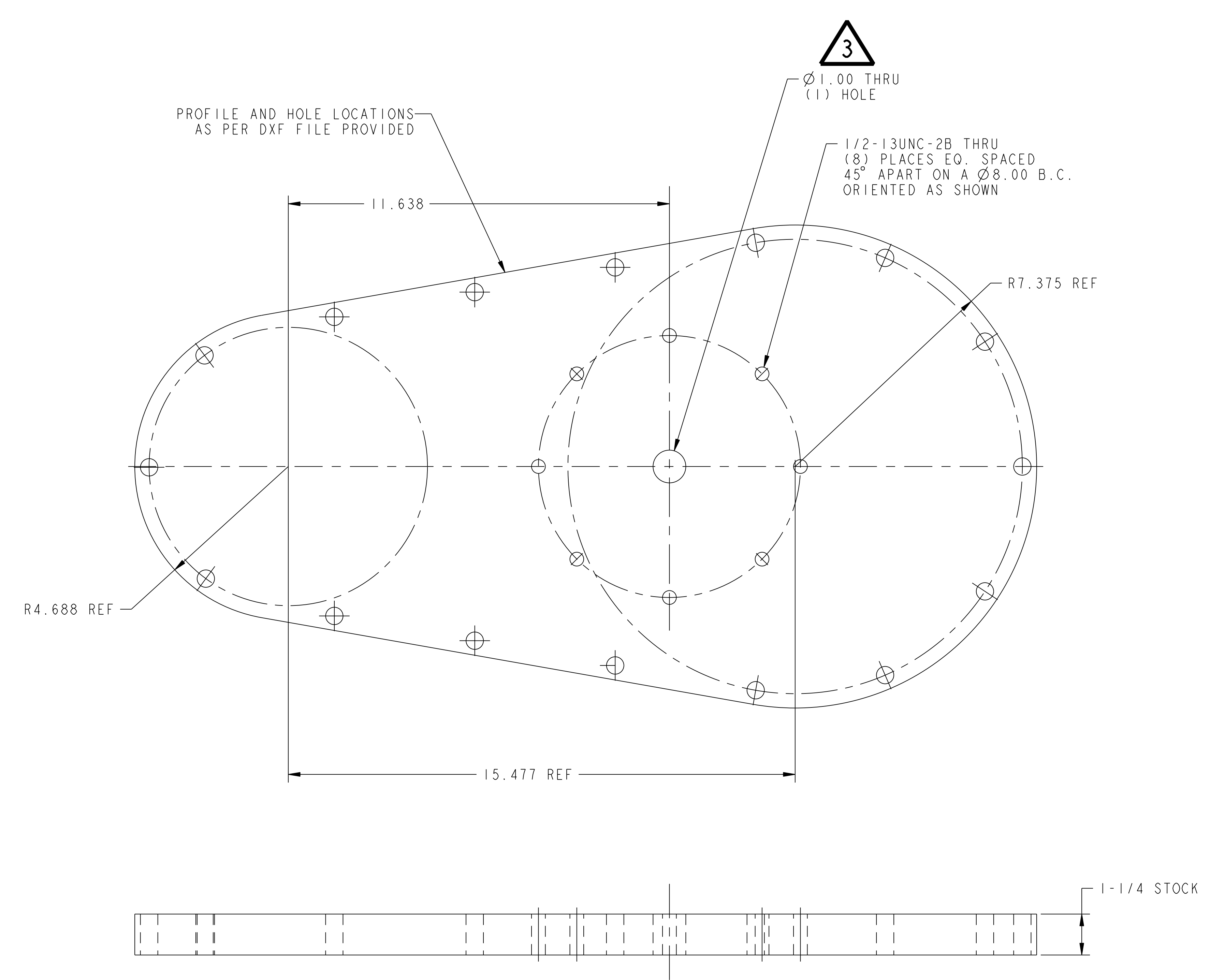
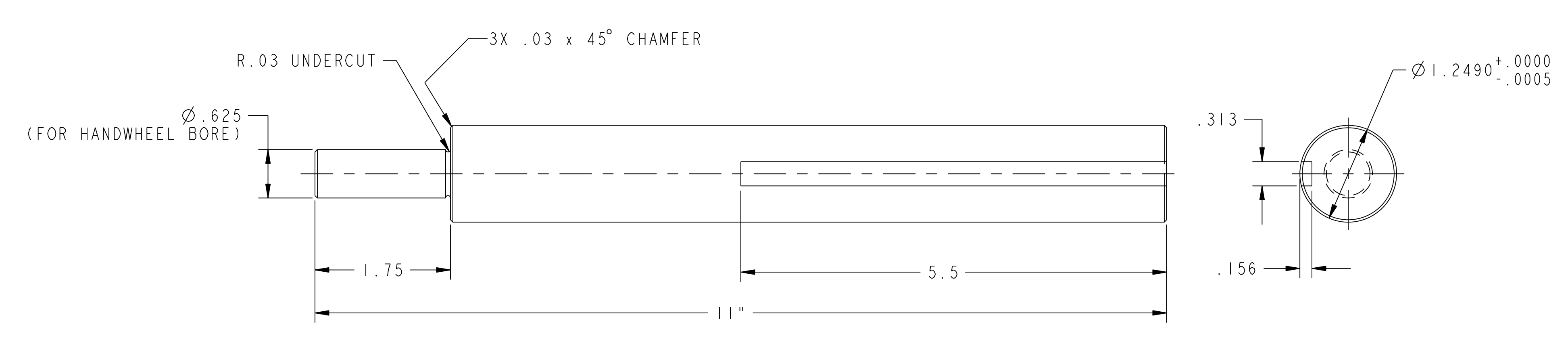


| NO. | REVISION             | BY | CH | SUP | APPROVED | DATE     |
|-----|----------------------|----|----|-----|----------|----------|
| 1   | REVISED PER ECN-5028 | LM | TB | JS  | T. BROWN | 10-18-05 |
| 2   | REVISED PER ECN-5029 | LM | TB | JS  | T. BROWN | 10-19-05 |
| 3   | REVISED PER ECN-5099 | LM | TB | JS  | T. BROWN | 3-29-06  |



1 PORT 12 BLANK-OFF COVER



2 WORM AXLE

**RELEASED FOR  
FABRICATION / INSTALLATION**  
PPPL Drafting:

| 2   | THIS DWG  | WORM AXLE   | ASTM A36           | 1           |
|---|---|---|--------------------|-------------|
| 1   | THIS DWG  | PORT 12 BLANK-OFF COVER   | ASTM A36           | 2           |
| PART NO.  | DRAWING NO  | NOMENCLATURE OR DESCRIPTION   | MATERIAL           | QTY REOD    |
| PARTS LIST  |   |   |                    |             |
| COMPUTER GENERATED DRAWING<br>MANUAL CHANGES NOT PERMITTED<br>Pro E | CENTRAL FILES:<br>UNLESS OTHERWISE SPECIFIED                                | PRINCETON PLASMA PHYSICS LABORATORY<br>PRINCETON UNIVERSITY<br><b>NATIONAL COMPACT STELLARATOR EXPERIMENT</b> |                    |             |
| DO NOT VERIFY INFORMATION BY SCALING DRAWING                        | DIMENSIONS ARE IN INCHES<br>MACHINE SURFACES<br>BREAK SHARP EDGES .005/.020 | EXTERNAL FLUX LOOPS<br>VACUUM VESSEL SUPPORT STAND<br>FIXTURE ASSEMBLY DETAILS                                |                    |             |
| TOLERANCES NON-CUMULATIVE   | DECIMAL-INCH FRACTIONS  | DSN: L. MORRIS  | 9-28-05            | DRAWING NO: |
| NEXT ASSEMBLY   | CHK: T. BROWN   | 9-28-05   | <b>SE184-003</b>   |             |
| WEIGHT<br>115.9 lbs   | ENGR: T. BROWN  | 9-28-05   | SHEET 1 OF 1 REV 3 |             |
| MODEL NAME<br>SE184-003-1   | SUPV: J. SIEGEL   | 9-28-05   | 9-28-05            |             |
| WELDING ENGINEER  | 9-28-05   |   |                    |             |

RELEASE LEVEL: Fabrication  
DWG VERSION NO: 0

NCSX-SE184-003