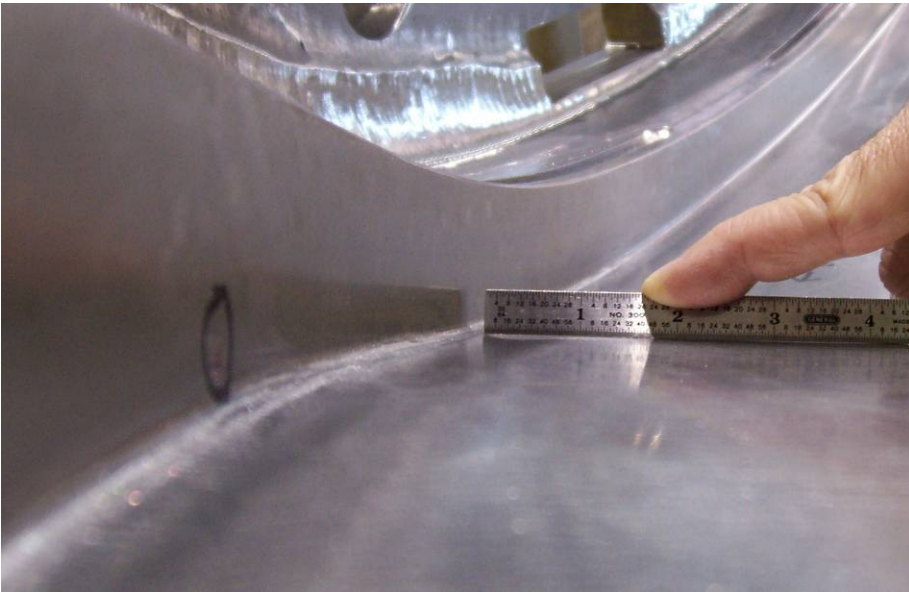


## A4 “gully” by Tee Radius



This photo shows the location - between Holes #86 to #94 on the side of the casting facing up on the shipping skid.



The next one shows a straight edge reference.

Note in both photos the shadow along the base of the tee. This is step, readily detected by hand, from the flat of the tee down toward the radius.

A4 "gully" by Tee Radius



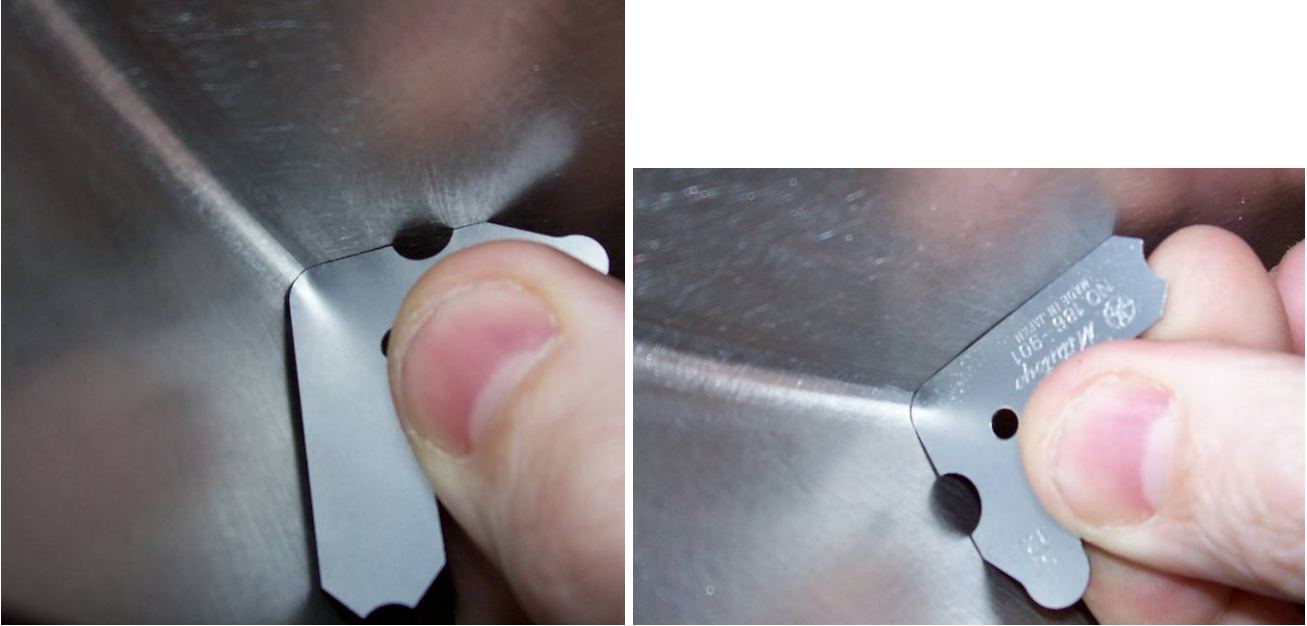
More shots of the straight edge on the long and short legs of the tee.



The first photo shows a 5/32" gauge. The second is the required 1/8" radius gauge

### A4 “gully” by Tee Radius

These photos show a short area, between holes #48 & #52 on the bottom side (as-shipped) of the casting, where the radius did not pass the gage check.



The first shows the required 1/8" gage and the second shows the next size bigger 5/32" gage.