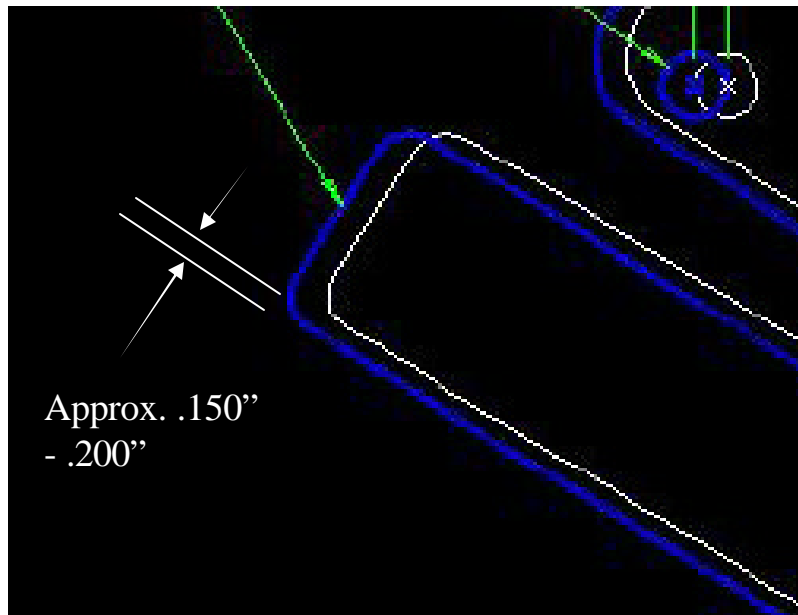


Lead Block Slot Condition

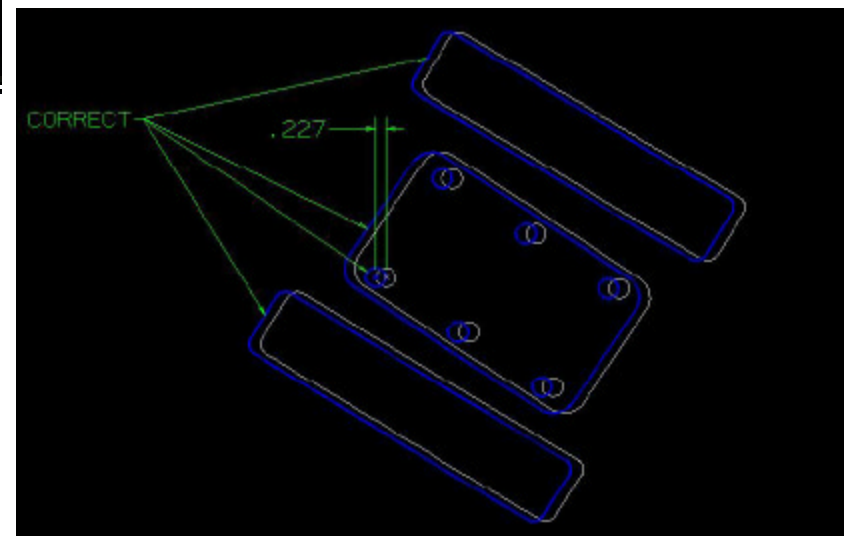
B1 and B2



The slots are off approximately .150" to .200" along the long side and .175 to .225" along the short side.

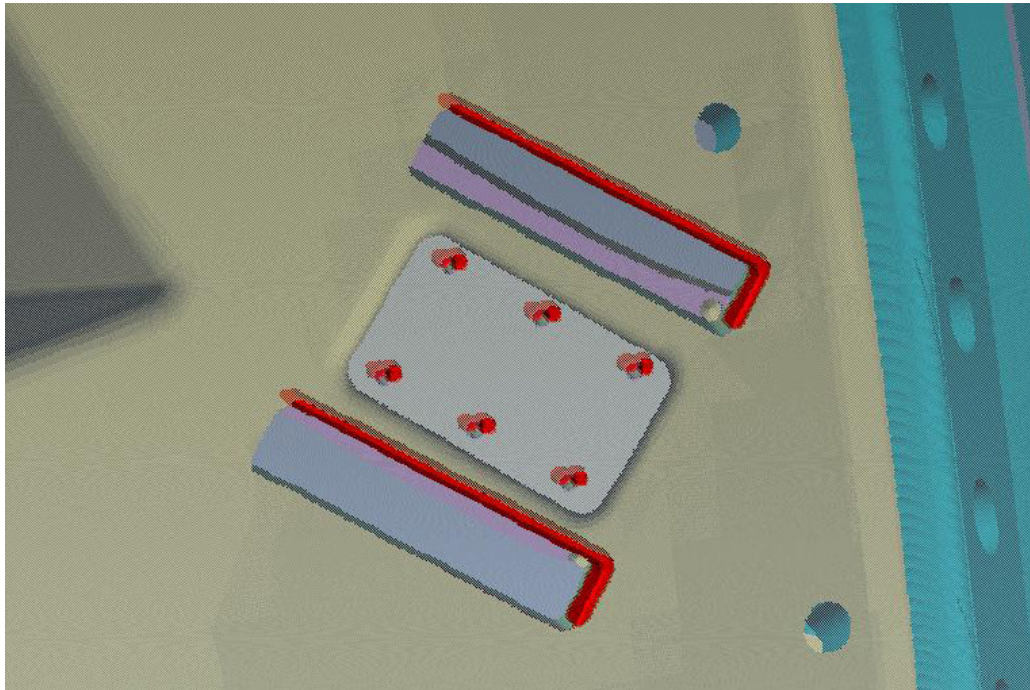
The face of the pad on B2 has been machined to the correct thickness which required approx. .5" of material removal.

B1 still has the additional .5" of stock.



Lead Block Slot Condition

B1 and B2



The red color around the slots would represent areas that are presently machined that would be outside of the slot tolerance if the slots are moved to their correct location.

Lead Block Slot Condition

B1 and B2

Proposed Remedial Action:

B1

- Assuming that the out of tolerance conditions would functionally be acceptable, MTM proposes that B1 remain unchanged.

B2

- Correct the location of the lead block slots and holes. This would move the holes onto the surface of the pad which would eliminate the need for the earlier proposed filler block. The slots would then have the condition described on page 2.