

PT Inspection Results of C5 – NC19587

MTM Workorder #: 65707/5.0

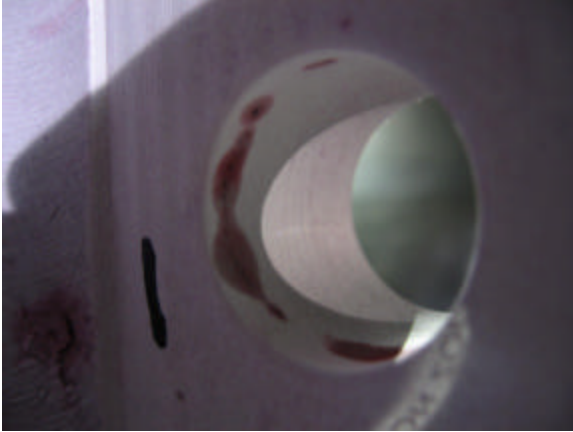
NC19587

SE141-116 C5 MODULAR COIL WINDING FORM TYPE-C

PENETRANT TEST: TYPE II, METHOD A, FORM E

REJECT INDICATIONS PER ASTM A903/A903M

1. Linear cluster, longest 1.250", side D, (1.130 diameter hole in foot)



2. Linear cluster, longest .450", under E flange, under small wing



3. Linear, length .300", on pad near lead block slot

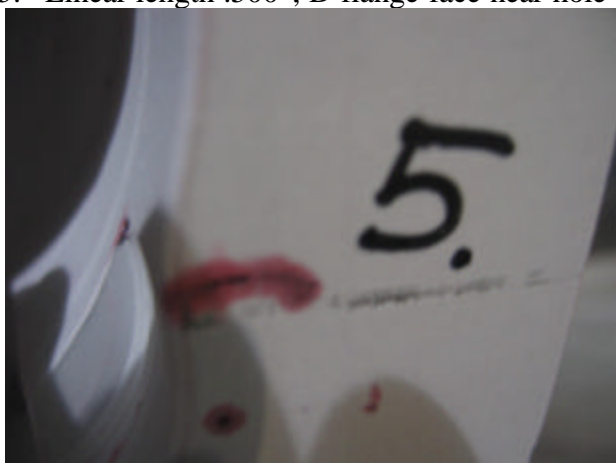


PT Inspection Results of C5 – NC19587

4. Linear cluster, longest .300", O.D. of D flange near hole 7



5. Linear length .500", D flange face near hole 16



6. Linear w/cluster porosity, longest .800", D-20



PT Inspection Results of C5 – NC19587

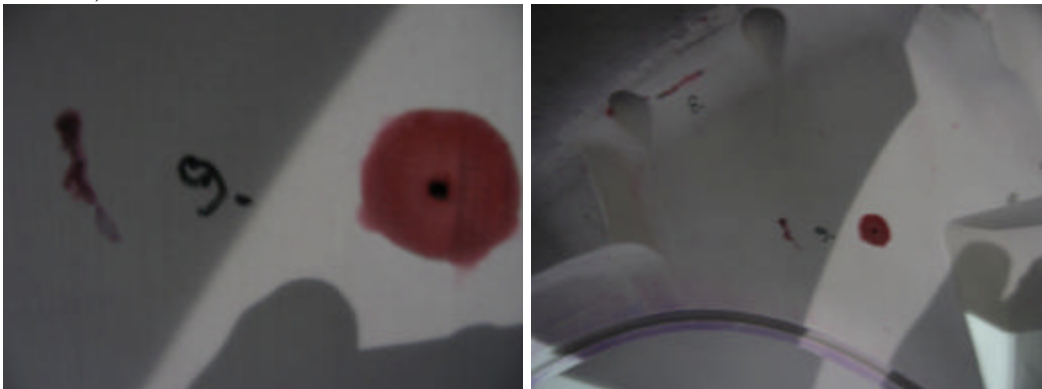
7. Linear (void), length .400"x .100", D-79 (bottom of cutout sheet 4, zone D5)



8. Linear, length 2.00", D-76 (between cooling holes sheet 9, zone D7)



9. Linear, .600" / rounded .125", D-75 (these are below VPI groove in high stress area)

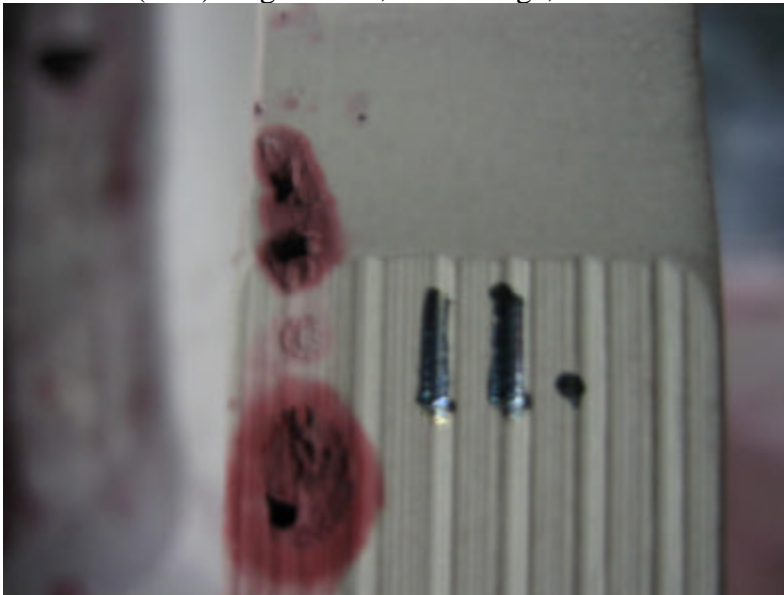


PT Inspection Results of C5 – NC19587

10. Linear cluster, longest .200", O.D. flange on leg, D-72



11. Linear (void) length .500", O.D. flange, E-64

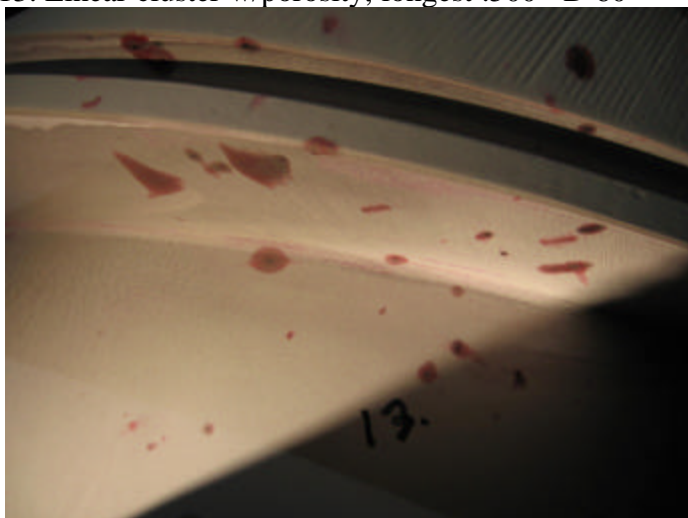


12. Linear cluster w/porosity, longest .800", D-60 (outside of large wing surface)



PT Inspection Results of C5 – NC19587

13. Linear cluster w/porosity, longest .500" D-60



14. Linear, length .150", D-43



15. Linear cluster, longest .200", T-face, hole 48



PT Inspection Results of C5 – NC19587

16. Linear, length .200", T face, hole 61



17. Linear cluster, longest .300", D-30

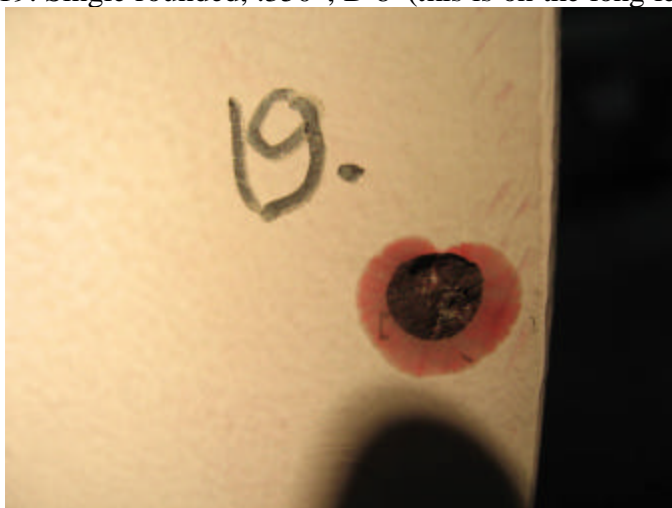


18. Linear cluster w/porosity, longest .200", D-22

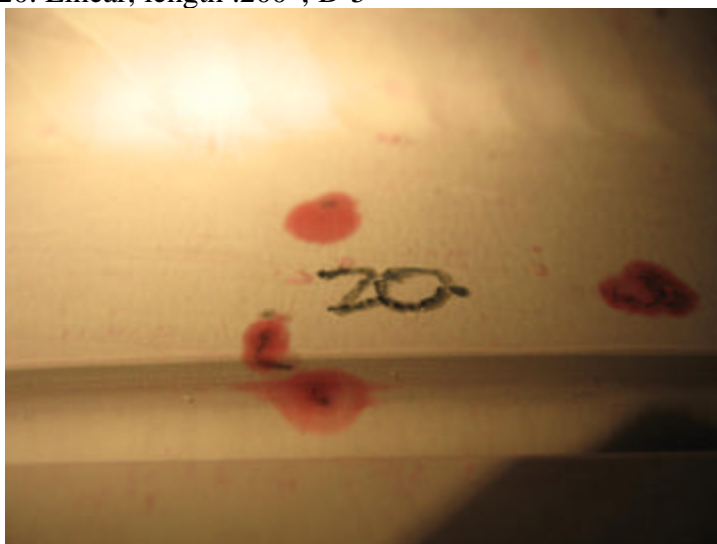


PT Inspection Results of C5 – NC19587

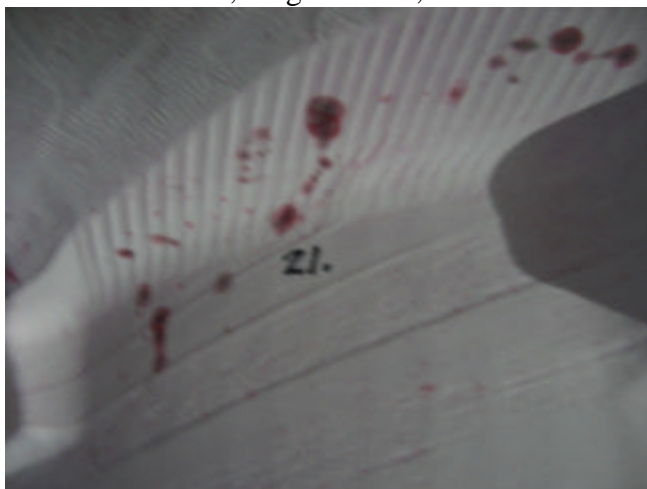
19. Single rounded, .350", D-8 (this is on the long leg of the T near the face)



20. Linear, length .200", D-5



21. Linear cluster, longest .300", D-87

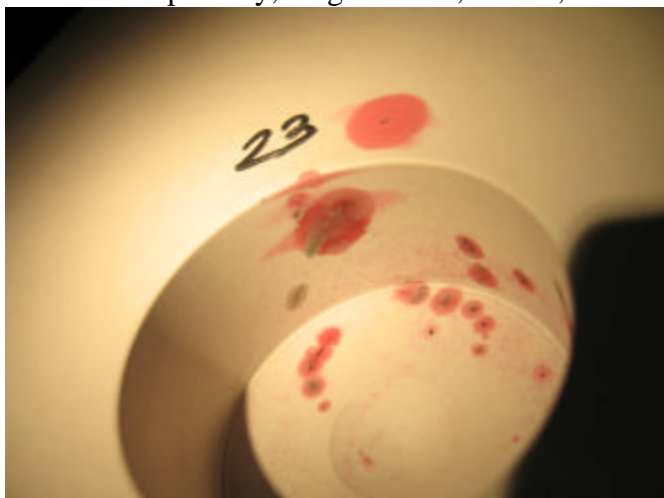


PT Inspection Results of C5 – NC19587

22. Linear, length .200", D-80



23. Linear w/porosity, longest .500", D face, 2" blind hole

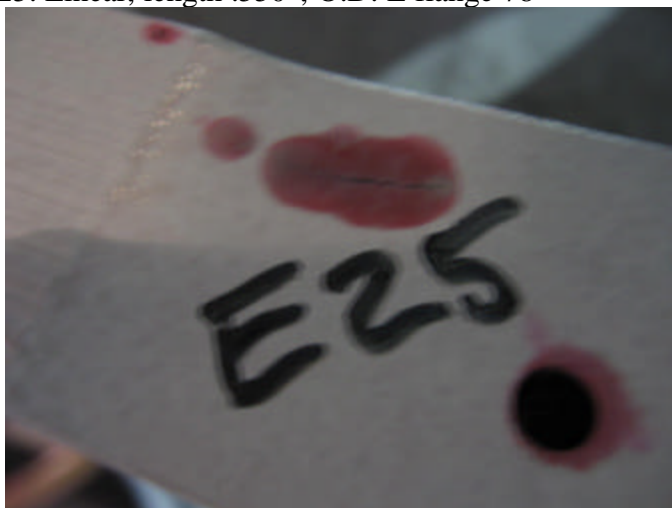


24. Linear, length 1.00", O.D. E flange 79



PT Inspection Results of C5 – NC19587

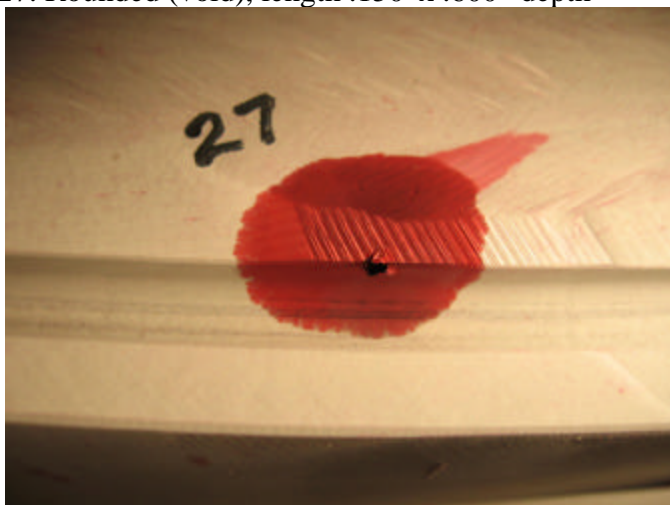
25. Linear, length .550", O.D. E flange 78



26. Linear cluster w/porosity, longest .200", E-60

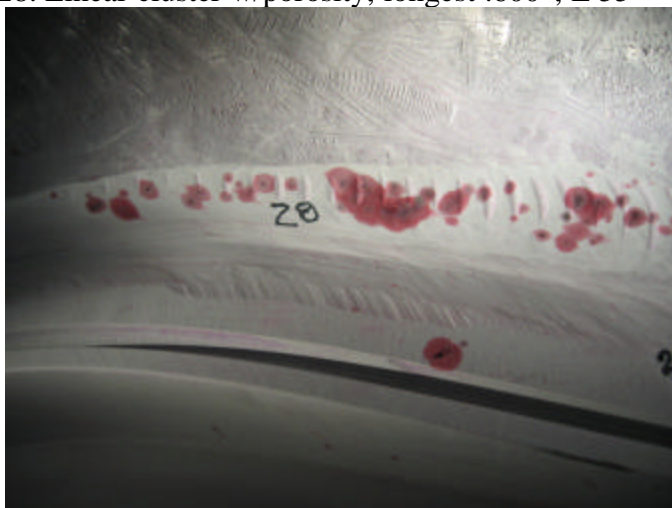


27. Rounded (void), length .150"x .600" depth

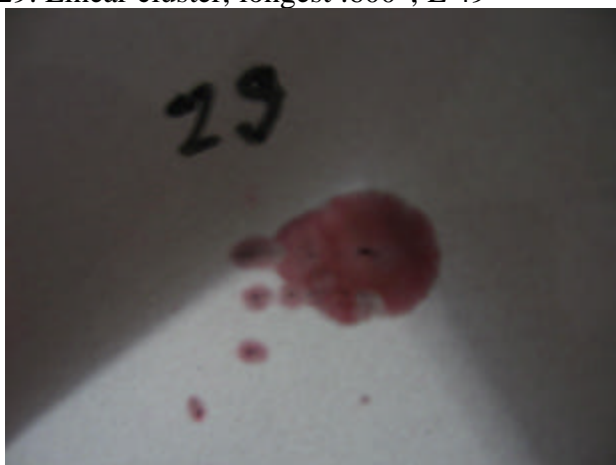


PT Inspection Results of C5 – NC19587

28. Linear cluster w/porosity, longest .600", E-55



29. Linear cluster, longest .600", E-49



30. Linear (void), length .300" x .250" depth, E-4



PT Inspection Results of C5 – NC19587

31. Linear cluster, longest .400", E-14

