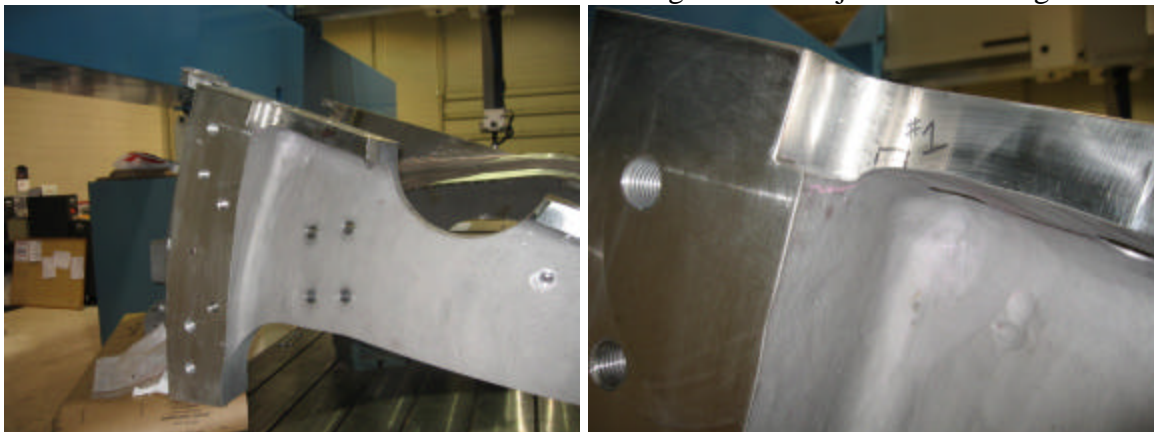


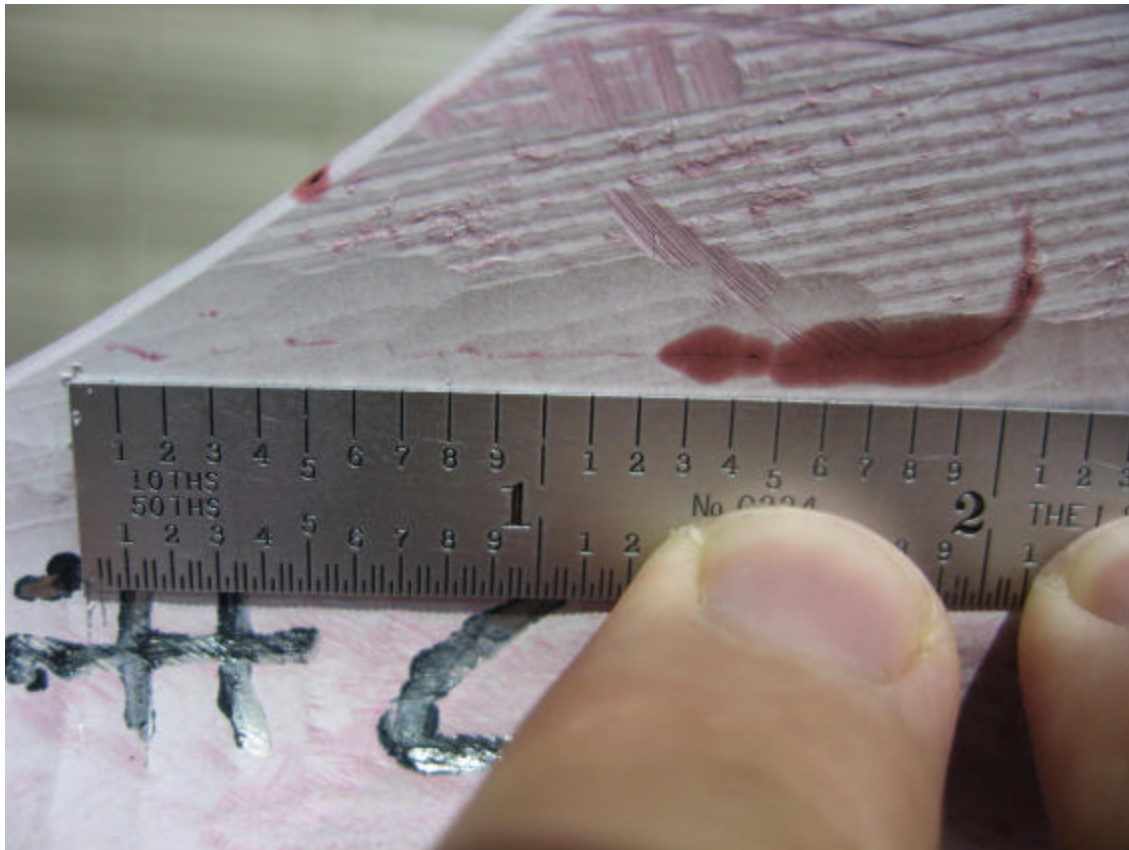
## PT Inspection Results of A3 – NC20166

1. .600" linear indication on OD of datum –E- flange located adjacent to E-flange hole 19.



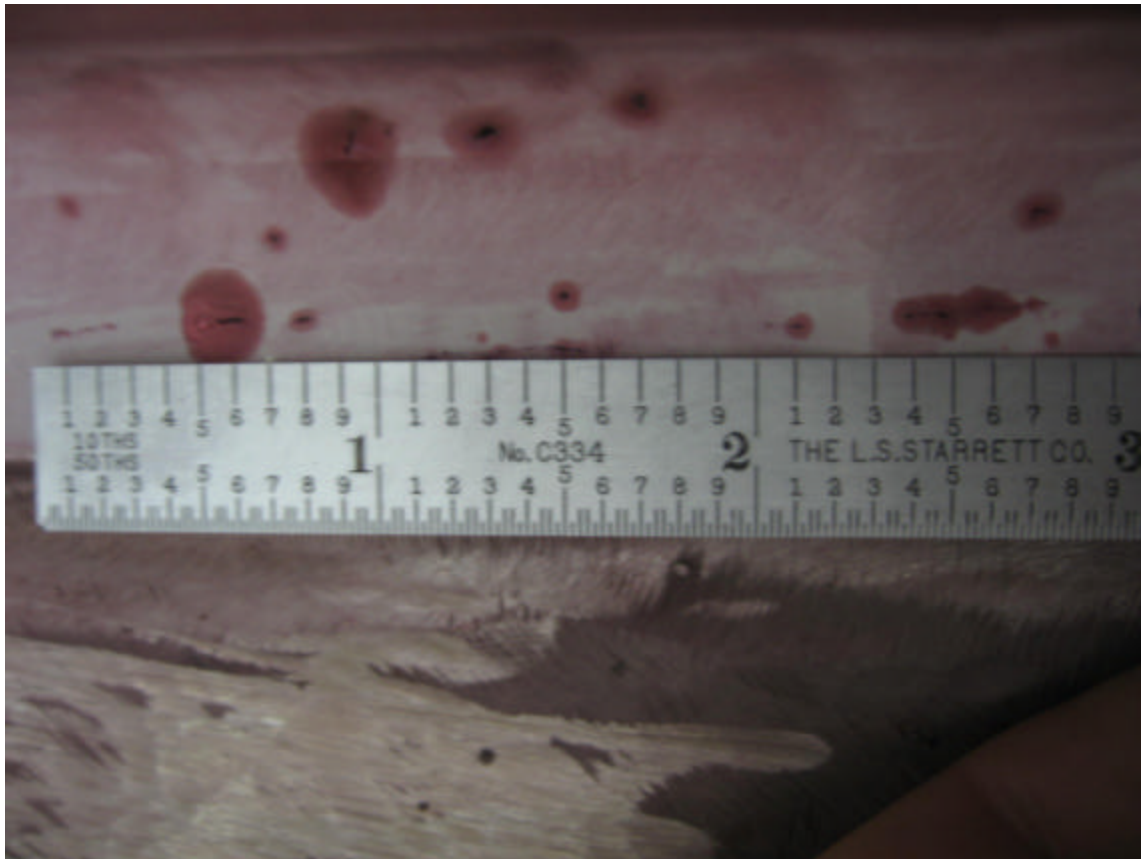
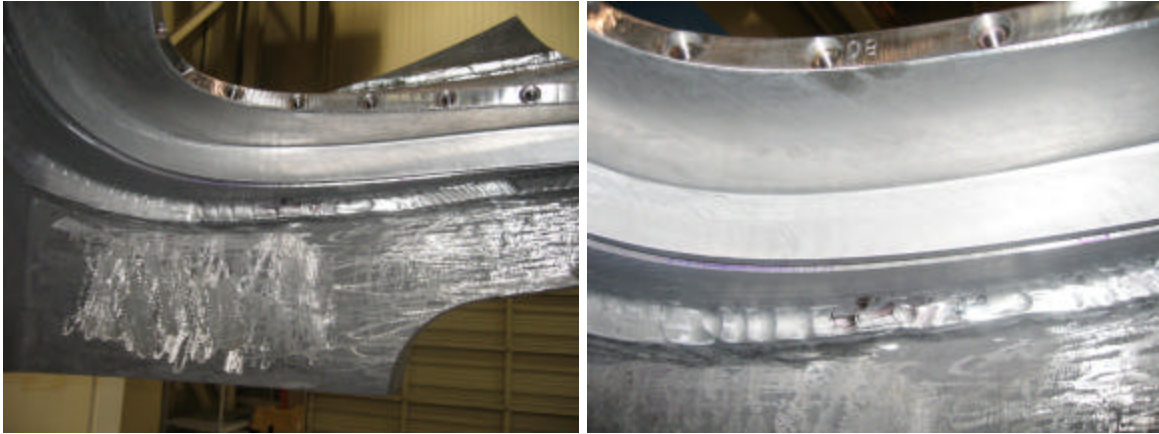
## PT Inspection Results of A3 – NC20166

2. Cluster of linear indications on E side of casting below VPI groove near T hole 86.  
The indications are on the inner casting wall and wrap around onto the surface of the 6" radial cutout. The longest indication is along the inner wall and is approximately 2".



## PT Inspection Results of A3 – NC20166

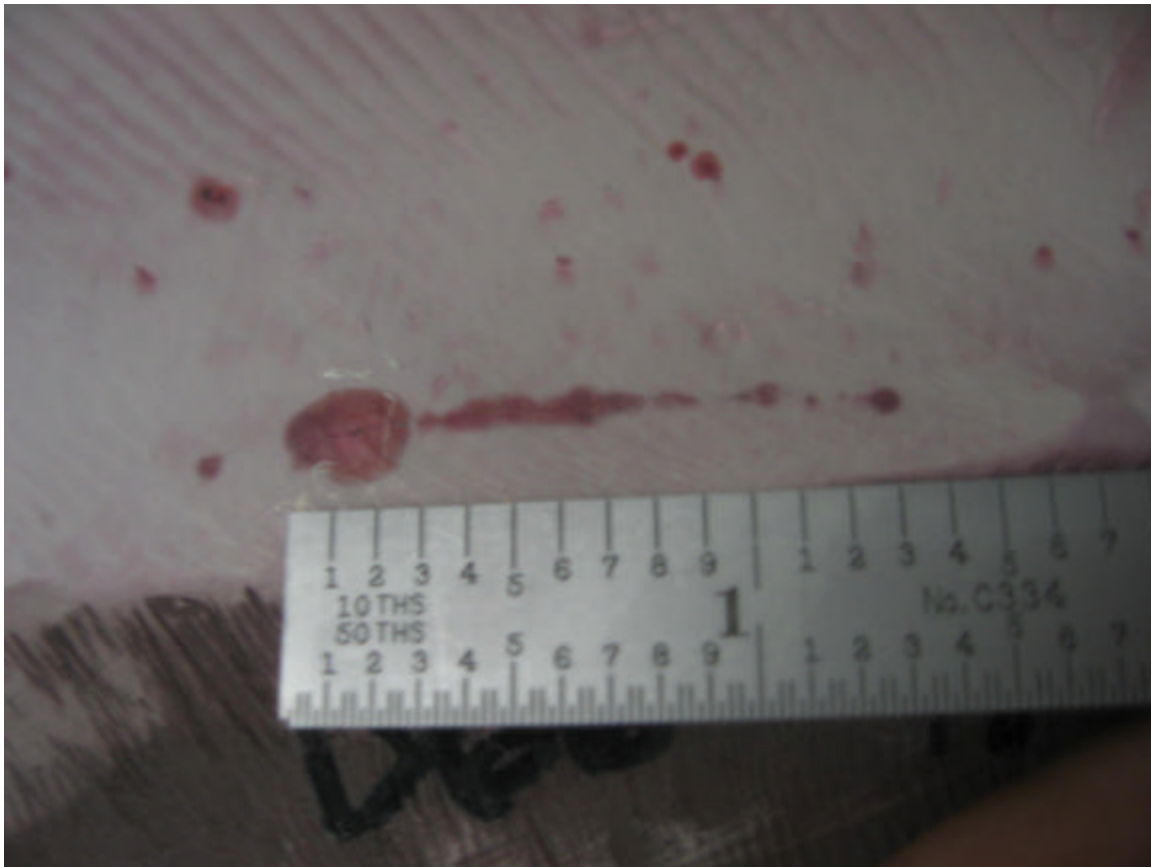
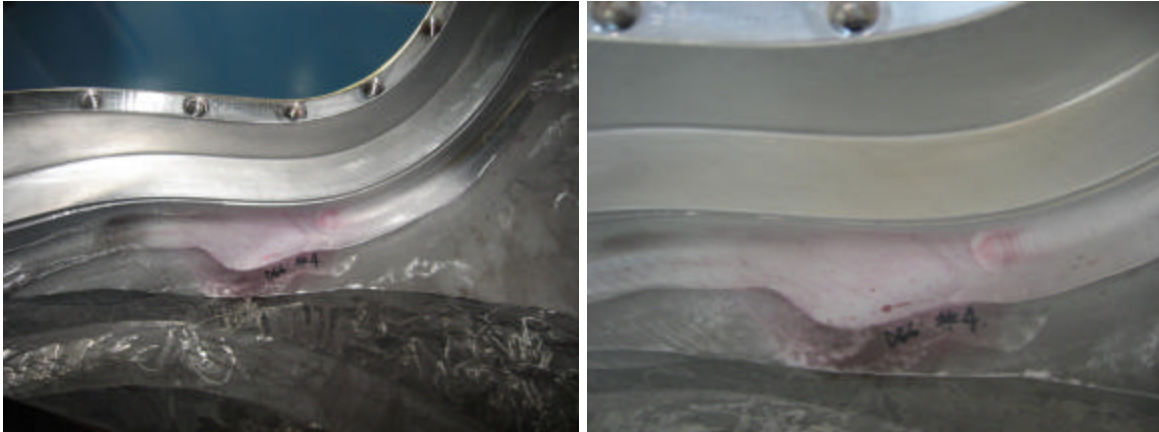
- Cluster of linear indications on the datum –D- side beneath the VPI groove near T hole 80. The indication from 1.1” to 2.7” on the scale appears to be continuous for a total length of 1.6”.





## PT Inspection Results of A3 – NC20166

4. Linear indication approximately 1.3" located on datum D side of casting below the VPI groove near T hole 66.



## PT Inspection Results of A3 – NC20166

5. Cluster of linear indications on and around the machined pad on the D side inner wall located near T hole 36. The longest indication appears to be continuous and is over 2”.

