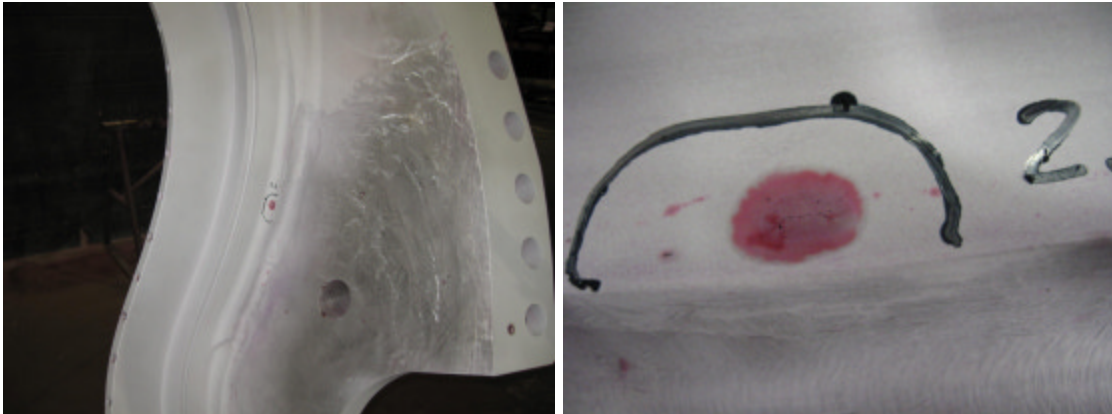


## PT Inspection Results of B1 – NC20483

1. .250" linear located on large wing of D flange.



2. .350" linear located in radius below VPI groove. (D flange side near T hole 31)

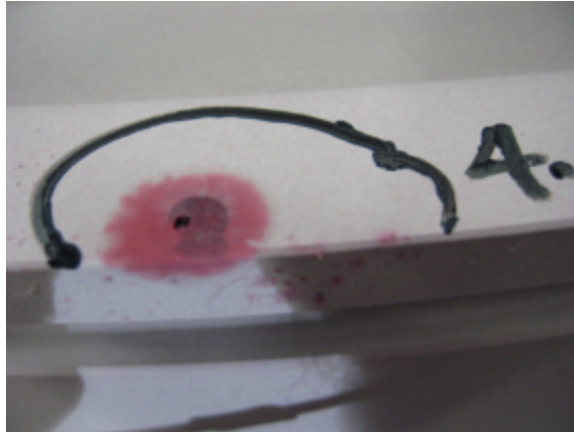


3. .150" linear located on small land between VPI groove and short leg of T. (D flange side near T hole 24)

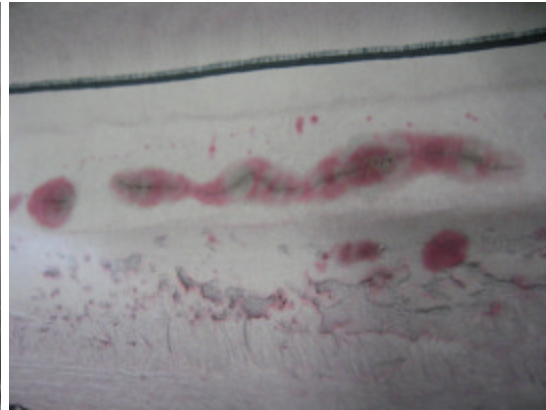
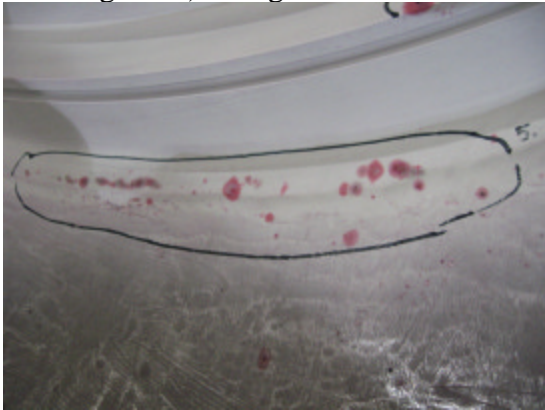


## PT Inspection Results of B1 – NC20483

4. .250" rounded inclusion on short leg of T outer edge. (D flange side near hole 22)



5. Cluster of indications in radius below VPI groove between T holes 18 and 22. (D flange side) Longest indication is a 2.1" linear.

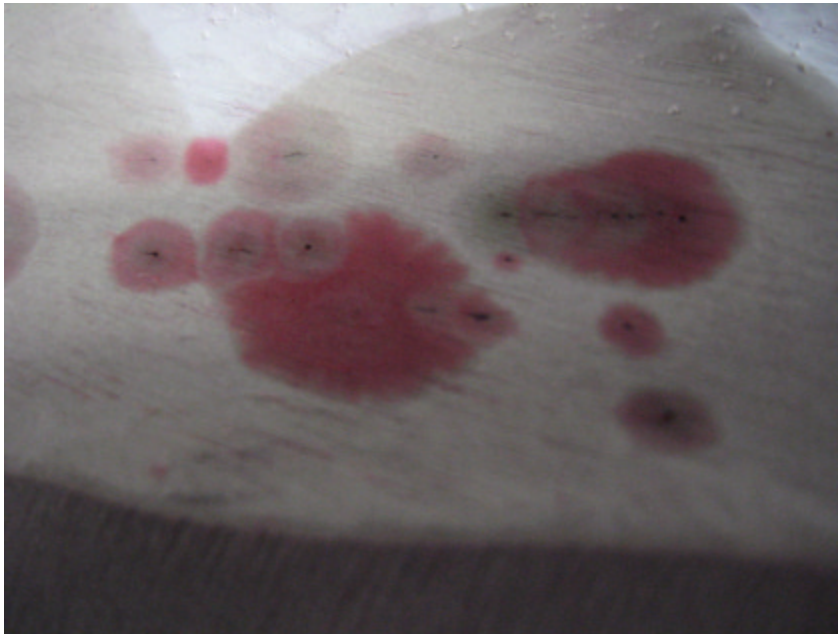


Picture at right is location of reject numbers 3, 4 and 5.



## PT Inspection Results of B1 – NC20483

6. Cluster of indications in radius below VPI groove between T holes 8 and 12. (D flange side) Longest indication is a .400" linear.



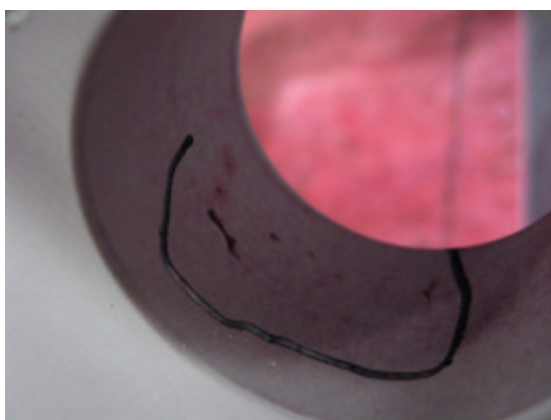
7. 1.6" linear indication on flange face of poloidal break.





## PT Inspection Results of B1 – NC20483

8. .300" long inclusion in D flange hole 14.



9. .200" linear on counterbore diameter of D flange hole 6.



## PT Inspection Results of B1 – NC20483

10. .200" linear on counterbore diameter of D flange hole 9.



Picture below is location of rejections 9 and 10.



## PT Inspection Results of B1 – NC20483

11. .700" linear on outer edge of E flange near flange hole 5.



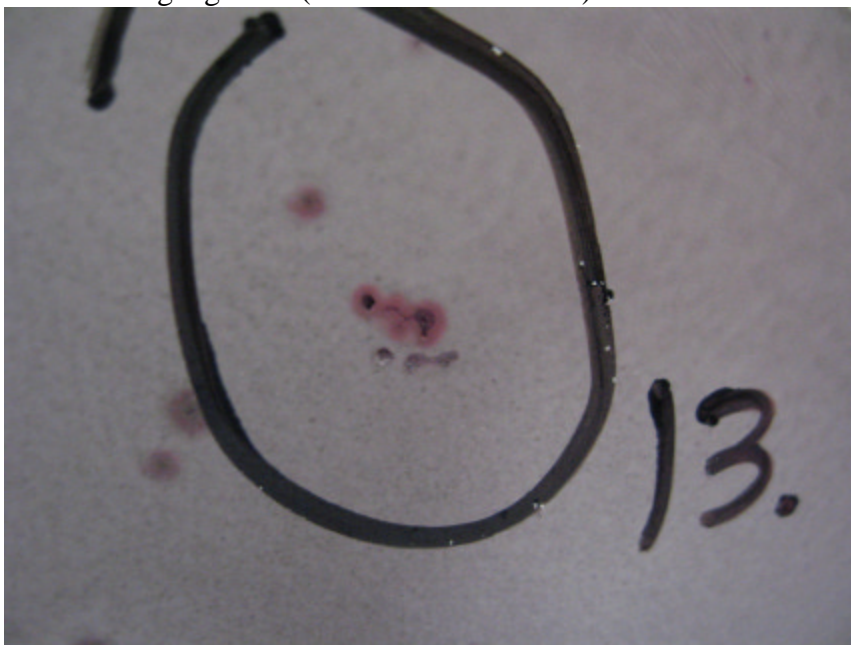
12. Cluster of indications that start on the E flange face and wrap around to the inside of the casting in the radius below the VPI groove. The longest indication is a .300" linear. The indications start between E flange holes 9 and 10.





## PT Inspection Results of B1 – NC20483

13. .200" linear on long leg of T. (E side near T hole 27)

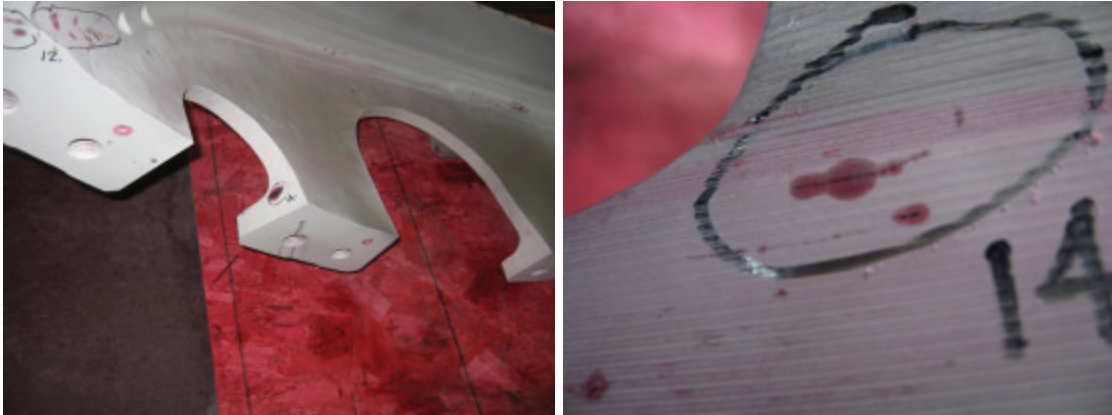


Picture below is location of rejections 12 and 13.



## PT Inspection Results of B1 – NC20483

14. .700" linear in the cutout between E flange holes 10 and 11.



15. Cluster of indications in radius below VPI groove (E side near T hole 9). Longest is a .300" linear.



16. Cluster of indications in radius below VPI groove (E side near T hole 94). Longest is a .250" linear.



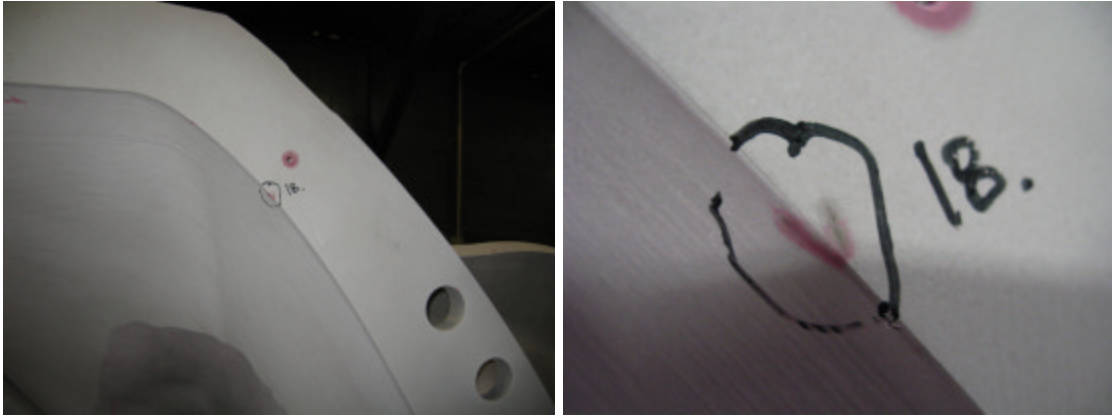


## PT Inspection Results of B1 – NC20483

17. Cluster of indications in radius below VPI groove (E side near T hole 50). Longest is a .350" linear.



18. .300" linear on edge between E flange and inner casting wall. Indication is near 1/4-20 tapped hole located at drawing zone D2 of sheet 5.

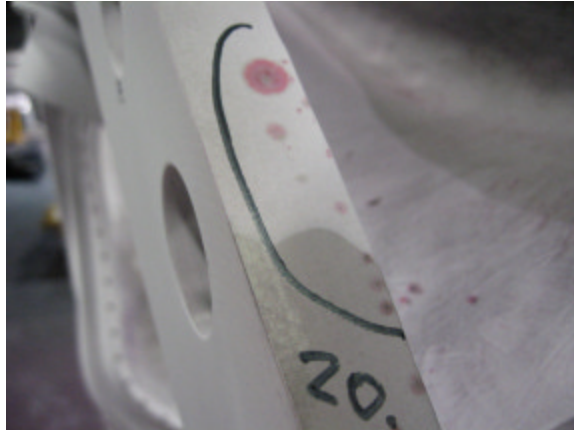


19. .100" linear on diameter of E flange hole 29.



## PT Inspection Results of B1 – NC20483

20. .150" linear on outer edge of E flange near flange hole 28.



21. 1.200" linear on outer edge of E flange between flange holes 26 and 27.



### Location of rejections 19, 20 and 21



## PT Inspection Results of B1 – NC20483

22. 1.00" linear on pad (sheet 3, zone C6 of drawing).

