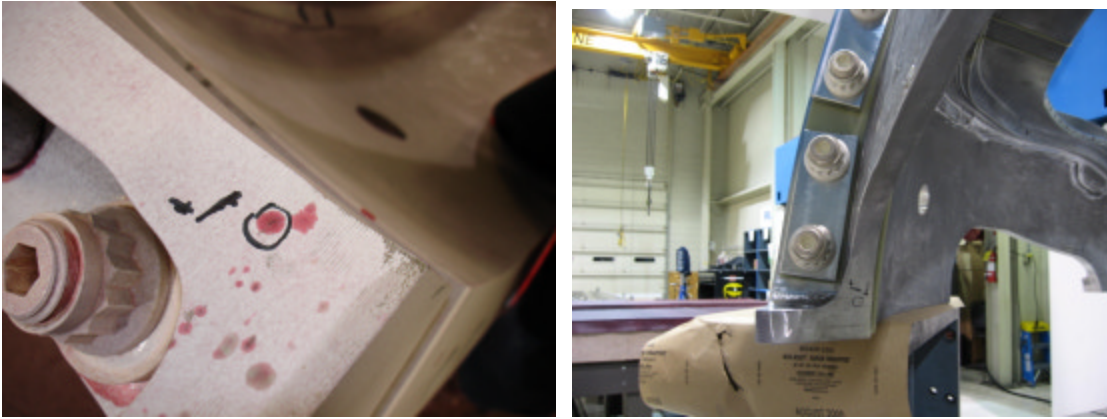
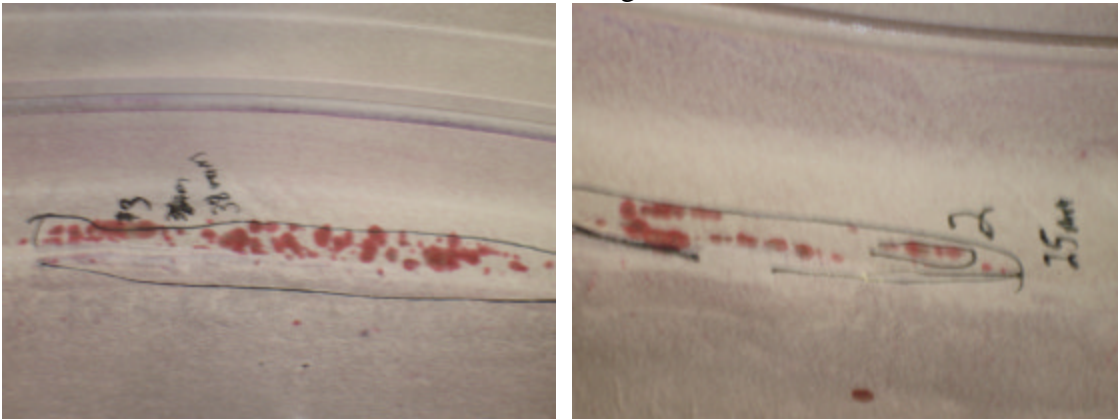


PT Inspection Results of A4 – NC20733

1. .120" linear indication located are large opening near datum D flange.



2. Cluster of linear indications in radius below VPI groove. Indications are between holes 13 and 18 on the datum D side of the T. Largest indication is a 1.5" linear.

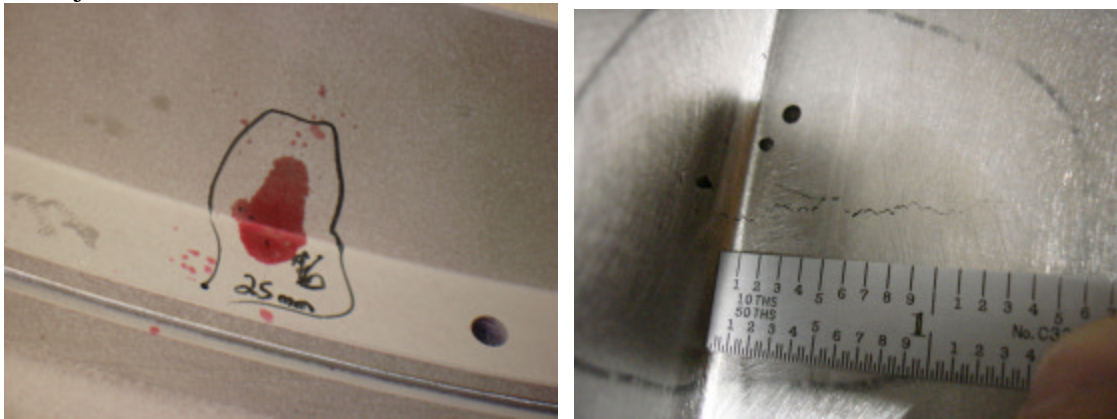


PT Inspection Results of A4 – NC20733

3. 1" linear indication in radius between long and short legs directly beneath hole 78.



4. 1.2" linear located on D side beneath hole 28. This is the same area noted on the RT rejection for film 26-30.



5. 2" linear indication on the long leg of T (D side) between holes 43 and 44. This indication is in the High Stress Region as identified in the CSPEC for the A castings. This is the same defect noted in RT shot 41 to 45.



PT Inspection Results of A4 – NC20733

6. .400" linear on outer edge of the datum E flange near flange hole 24.

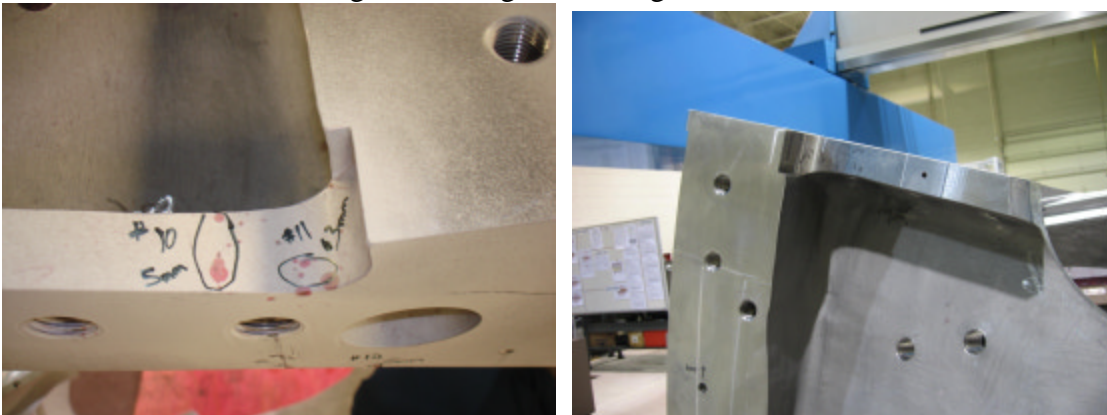


7. .5" linear located in radius below VPI groove on E side of casting below hole 49.



8. .200" linear on outer edge of E flange near flange hole 19.

9. .120" linear on outer edge of E flange near flange hole 19.



PT Inspection Results of A4 – NC20733

10. .200" linear located on inside edge of E flange face between flange holes 18 and 19.



11. .200" linear on the poloidal break face on E side of flange near T section.



12. .600" linear on outer edge of datum D flange near poloidal break.

