

C3 Liquid Penetrant Inspection Map of Indications

Area #1

Linear indications (size of discontinuity not bleed-out)
.080" to .500"

14 random rounded indications (size of bleed-out 30min dwell time)
>.125" inspected with pin gage
estimated 50% of rounds would not be rejected based on the size of the discontinuity



C3 Liquid Penetrant Inspection Map of Indications

Area #2

Linear indications (size of discontinuity not bleed-out)
.085" to .200"

15 random rounded indications (size of bleed-out 30 min dwell time)
>.125" inspected with pin gage
estimated 50% of rounds would not be rejected based on the size of the discontinuity



C3 Liquid Penetrant Inspection Map of Indications

Area #3

Linear indications (size of discontinuity not bleed-out)
.200" to .600"

17 random rounded indications (size of bleed-out 30min dwell time)
>.125" inspected with pin gage
estimated 50% of rounds would not be rejected based on the size of the discontinuity



C3 Liquid Penetrant Inspection Map of Indications

Area #4

Linear indications (size of discontinuity not bleed-out)
.100" to .400"

29 random rounded indications (size of bleed-out 30min dwell time)
>.125" inspected with pin gage
estimated 50% of rounds would not be rejected based on the size of the discontinuity



C3 Liquid Penetrant Inspection Map of Indications

Area #5

Linear indications (size of discontinuity not bleed-out)

>3.00" non-metallic inclusion (size of bleed out 30min dwell time)



C3 Liquid Penetrant Inspection Map of Indications

Area #6

Linear indications (size of discontinuity not bleed-out)
.075" to .700"

12 random rounded indications (size of bleed-out 30min dwell time)
>.125" inspected with pin gage
estimated 50% of rounds would not be rejected based on the size of the discontinuity



C3 Liquid Penetrant Inspection Map of Indications

Area #7

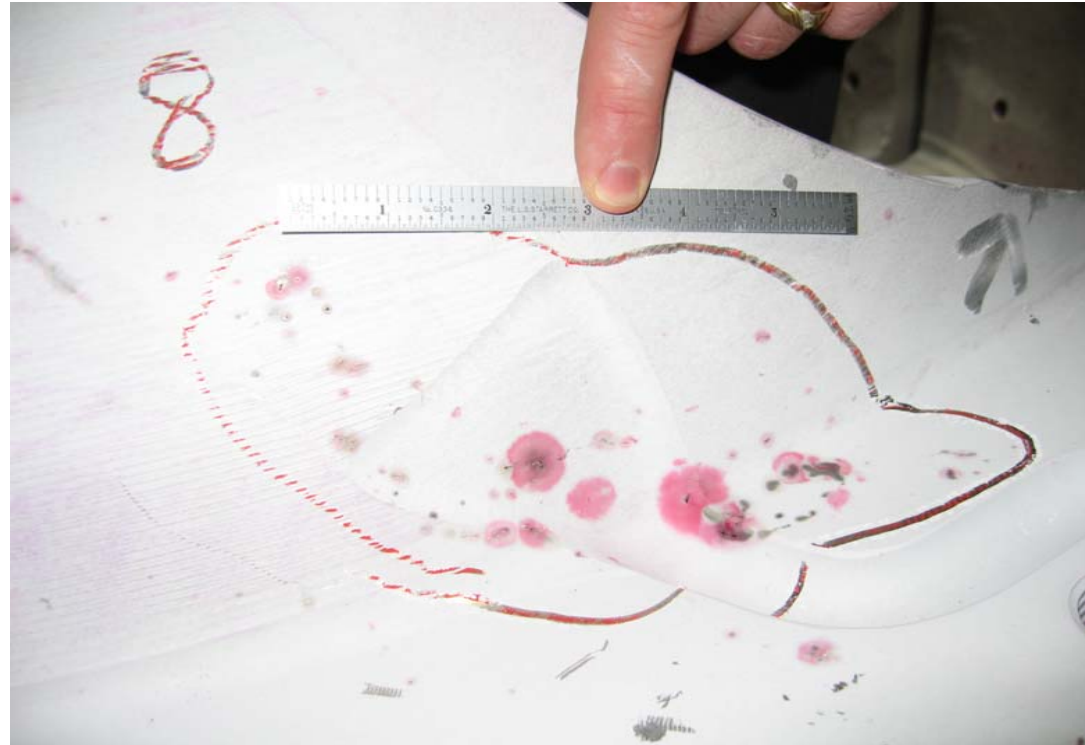
Linear indications (size of discontinuity not bleed-out)
.200" to .500"



C3 Liquid Penetrant Inspection Map of Indications

Area #8

Shrink, inclusion pocket, unable to determine individual size
bleed-out ranges from .200" to 1.25"



C3 Liquid Penetrant Inspection Map of Indications

Area #9a

Linear indications (size of discontinuity not bleed-out)
.300" to .450"



C3 Liquid Penetrant Inspection Map of Indications

Area #9b

Large defect passes through from machined surface to non-machined surface



C3 Liquid Penetrant Inspection Map of Indications

Area #10

Shrink pocket .600" x .700"



C3 Liquid Penetrant Inspection Map of Indications

Area #11

Linear indications (size of discontinuity not bleed-out)
.400" to 1.200"



C3 Liquid Penetrant Inspection Map of Indications

Area #12

Linear indications (size of discontinuity not bleed-out)
.100" to .800"



C3 Liquid Penetrant Inspection Map of Indications

Area #13

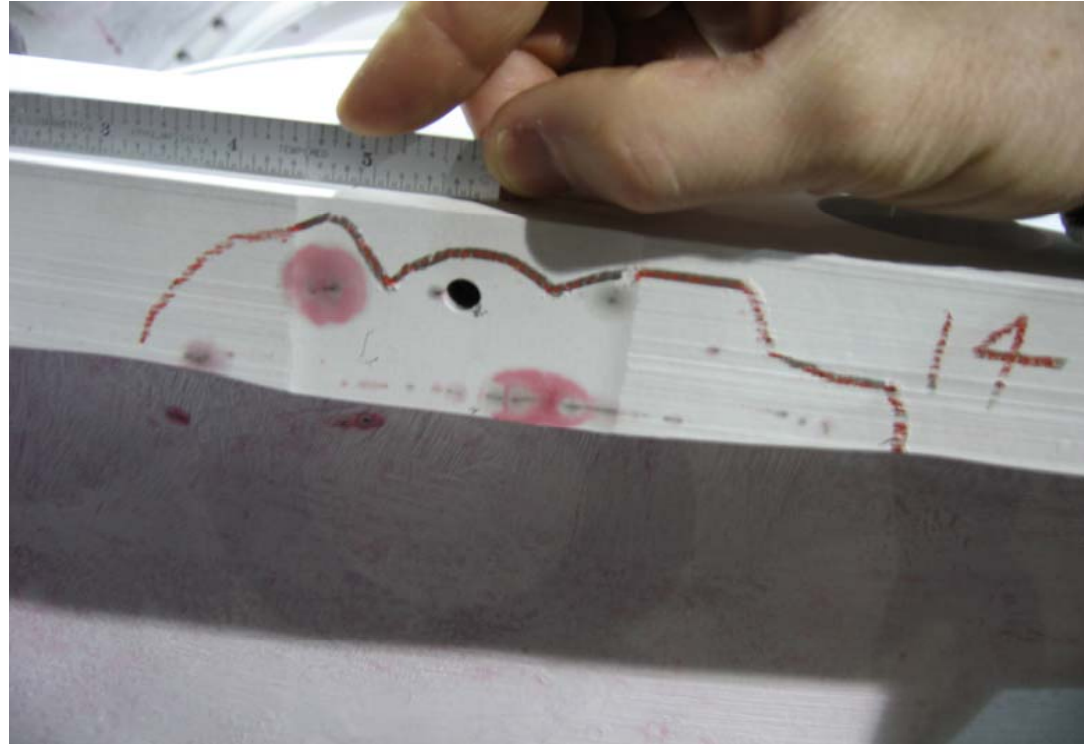
Linear indications (size of discontinuity not bleed-out)
.200" to .350"



C3 Liquid Penetrant Inspection Map of Indications

Area #14

Linear indications (size of discontinuity not bleed-out)
.100" to 1.250"



C3 Liquid Penetrant Inspection Map of Indications

Area #15

Linear indications (size of discontinuity not bleed-out)
.100" to .300"



C3 Liquid Penetrant Inspection Map of Indications

Area #16

Linear indications (size of discontinuity not bleed-out)
.100" to .250"

