



COOPERHEAT

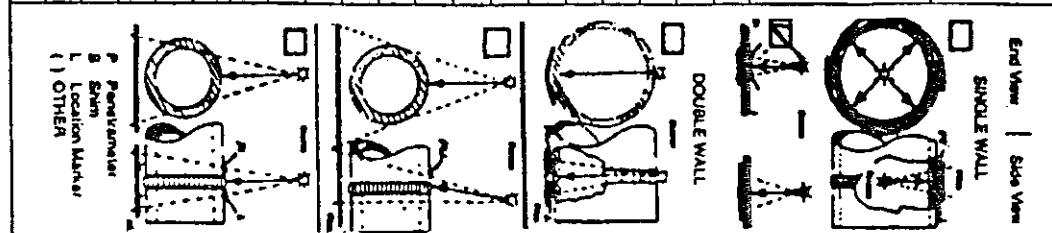
MGAS

4959  
10520 Chester Road  
Woodlawn, Ohio 45215

CLIENT: Major Tool & Machine  
 WELD PROCESS: ER192  
 WELD PROCESS: N/A  
 ISO/OPENING: DIA. X LENGTH: .118" x .089"  
 CURTAIN: 22  
 FOCAL SPOT SIZE: .148"  
 MATERIAL SPEC: 316 SST  
 INTERNAL DIAMETER: 17"  
 SOD: 16.95"  
 RADIOGRAPHY: Robert Weaver / II  
 JOB NO: 13860001  
 P.O. NO: N/A  
 DATE: 6/26/06  
 REMARKS: Density meter - 12105 cal div - 8.2-06  
 TIME: 4:30  
 FILM TYPE: Kodak AA  
 FILM TECHNIQUE: Double  
 PB SCREENS: .010"  
 ACCEPTANCE STANDARD: NO Defects > .080"

DESCRIPTION: G5709/50/1/134/8R  
 SE141-114  
 Page 1 of 2  
 REMARKS: W-shrinkage - as shown on PT-NC2004 Item 4

FITTING, SEAM OR FITTING	FILM INTERVAL NUMBER	WELDER IDENTIFICATION	PENETRANT		SLAG	POROSITY	POROSITY WITH TAIL	CRACK	LACK OF PEN	LACK FUSION	INTERNAL CONVEXITY	INTERNAL CONCAVITY	TUNGSTEN	MELT-THROUGH	BURN-THROUGH	CRATER-PIT	OXIDATION	INTERNAL UNDERCUT	EXTERNAL UNDERCUT	ALIGNED INDICATIONS	WELD CONTOUR	MIS-MATCH	FILM ARTIFACT	VISUAL CONCERNS	FILM DENSITY	SEE REMARKS	ACCEPT	REJECT	
			SIZE	QUALITY LEVEL																									
T	0-1	N/A	1B	.016"																									
	1-2																												
	2-3																												
	3-4																												



Robert Weaver 655554/H

Customer Representative Signature

6/26/06  
Date

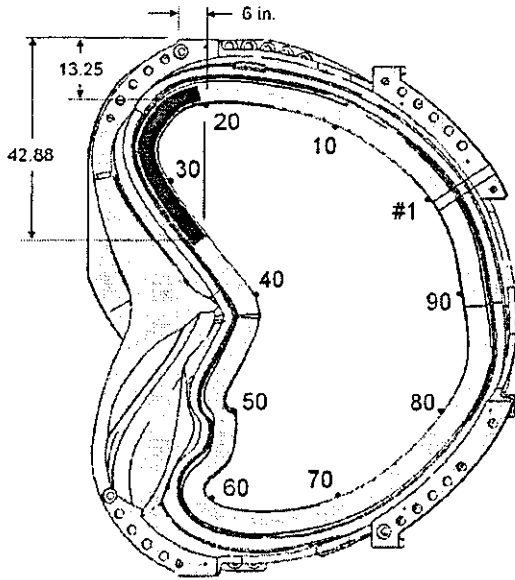
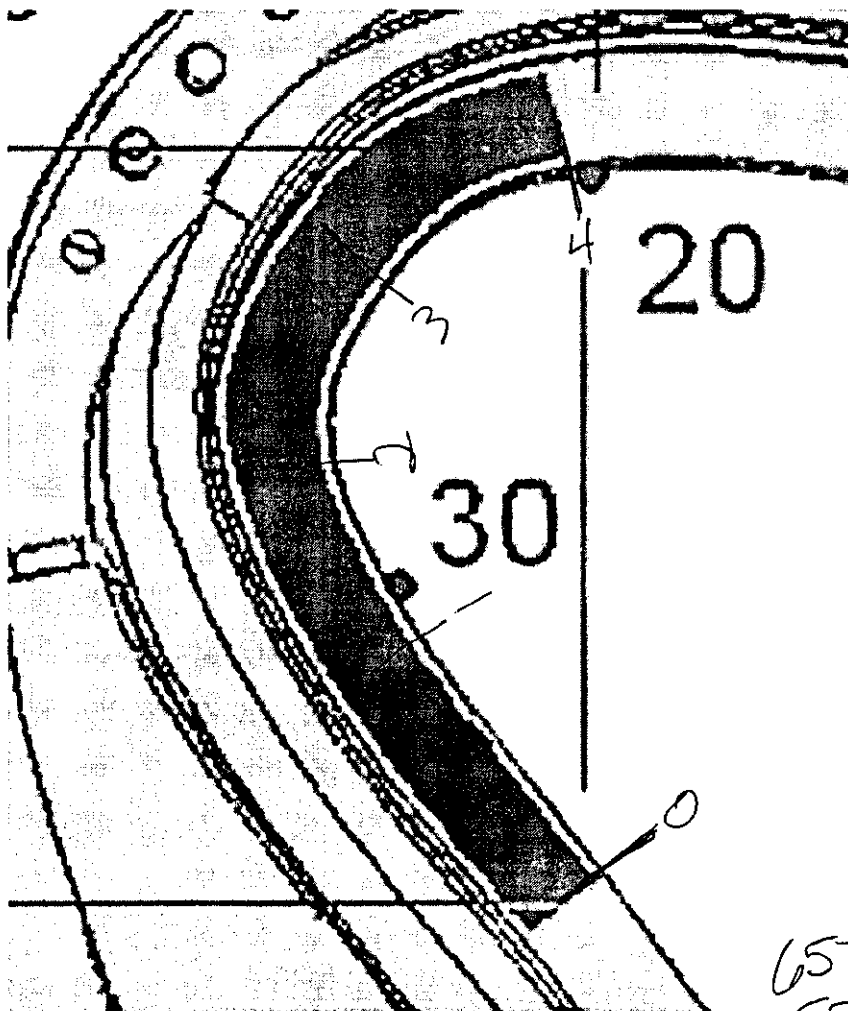


Figure 7-4- High Stress Region Identification for Type-A MCWF



65709/2.0/1/134/818  
SE141-114  
6/26/06  
page 2 of 2

SE141-114 TYPE A2  
RT ATTACHMENT

Photo of RT film 2-3

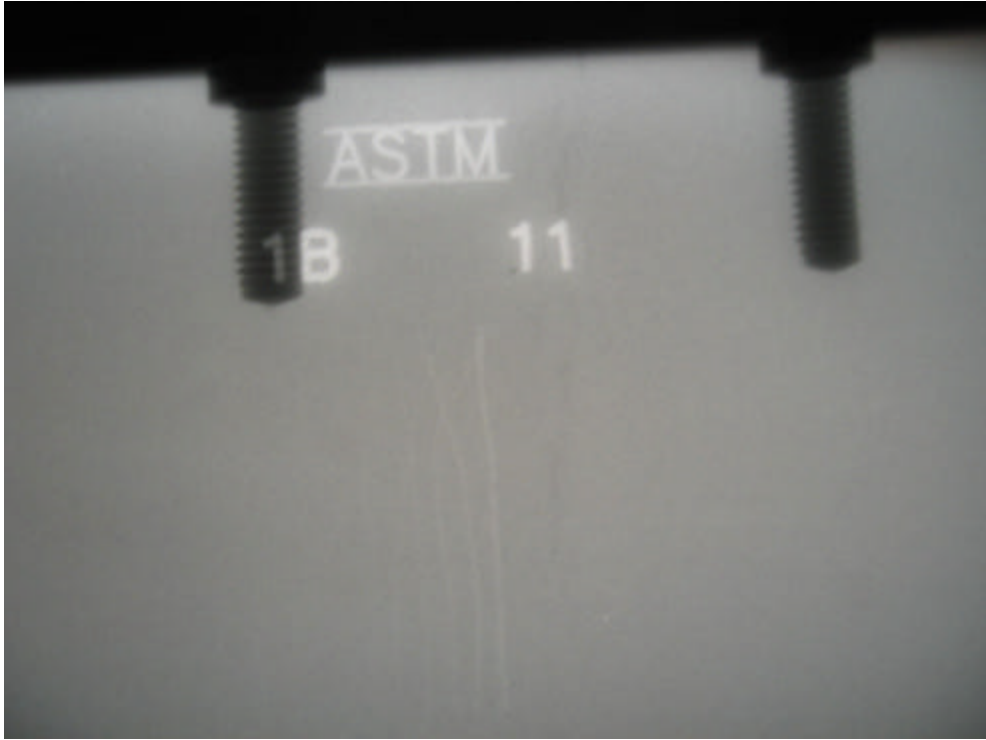


Photo of PT rejection #4 (reference NC20044 attachment)

