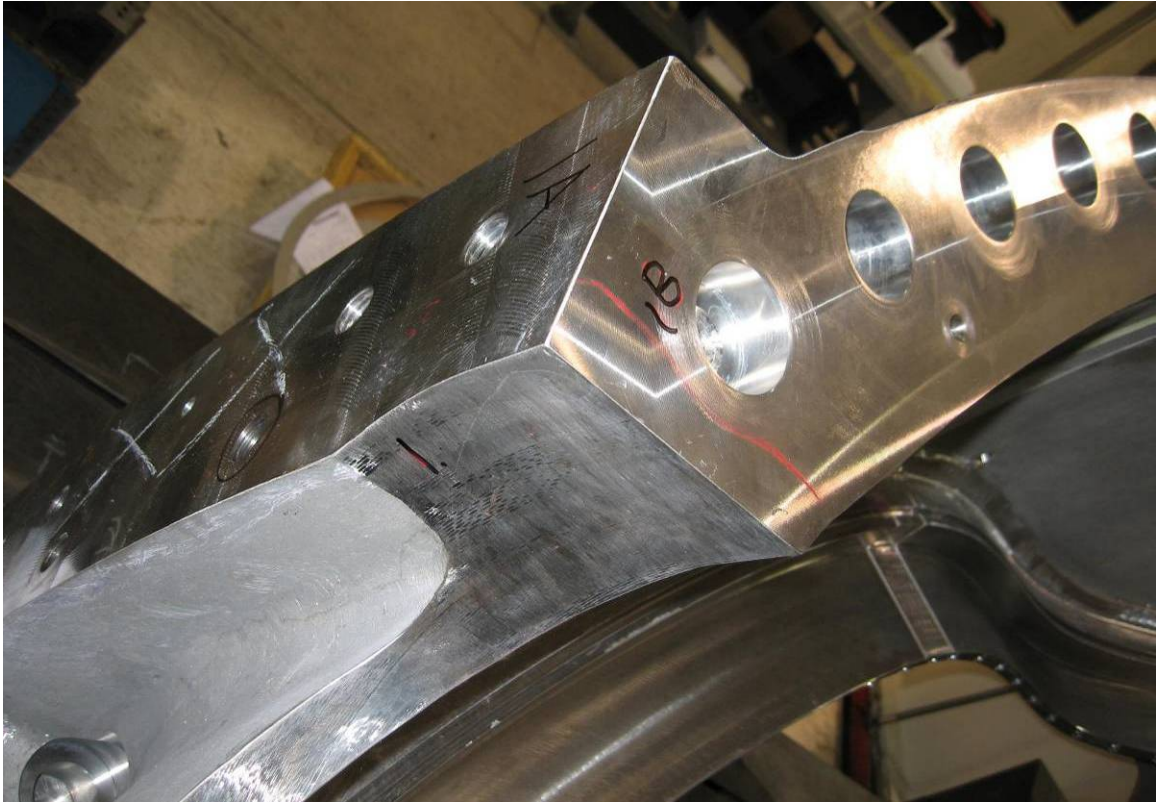


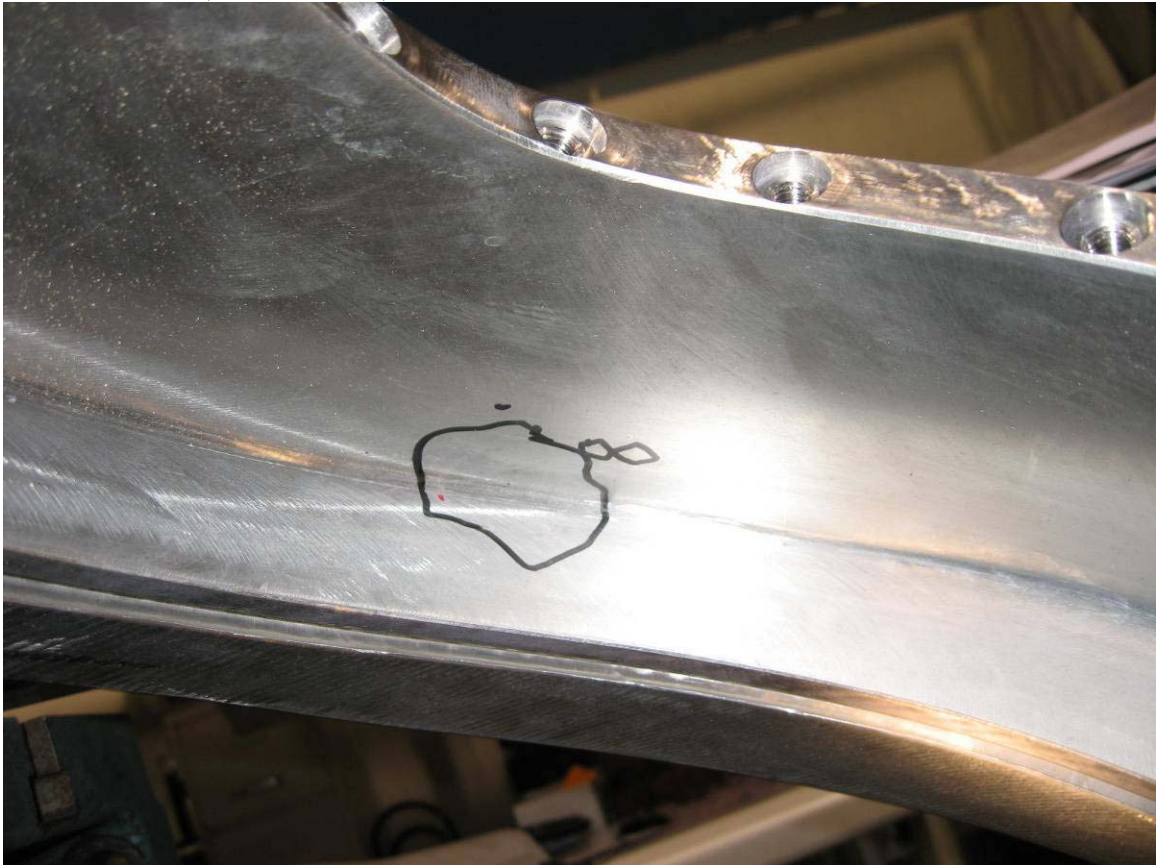
Location for A, 1-A, 1-B Indications:



Location of Indication #3



Location of #8 (corner of Tee):



Another view of crack #15.





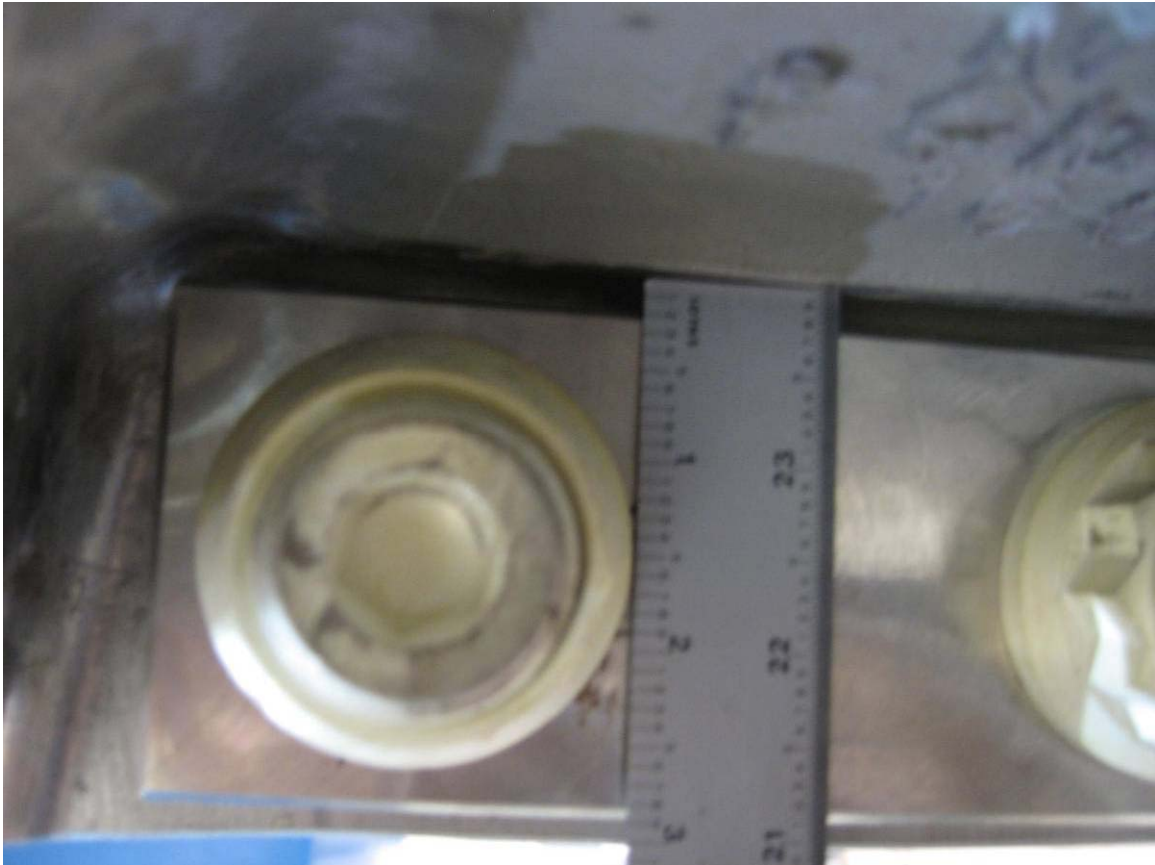
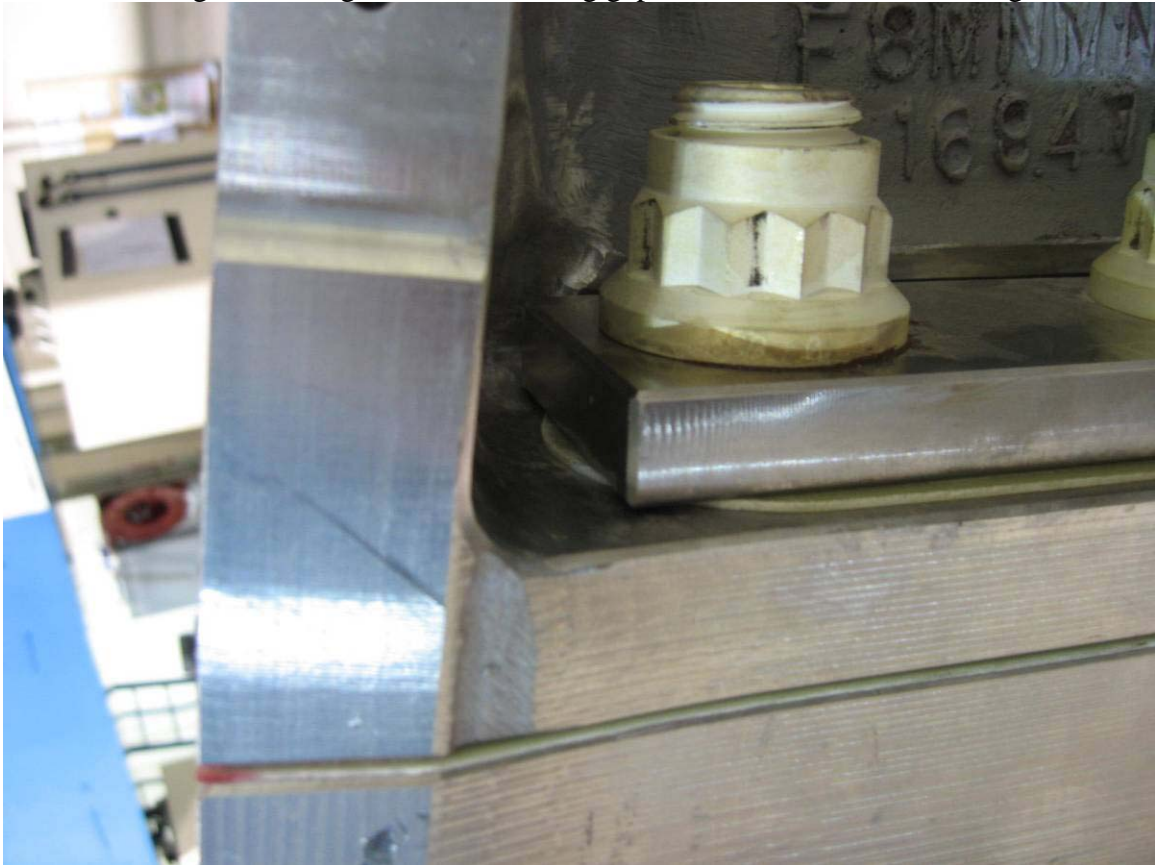
Indication #16

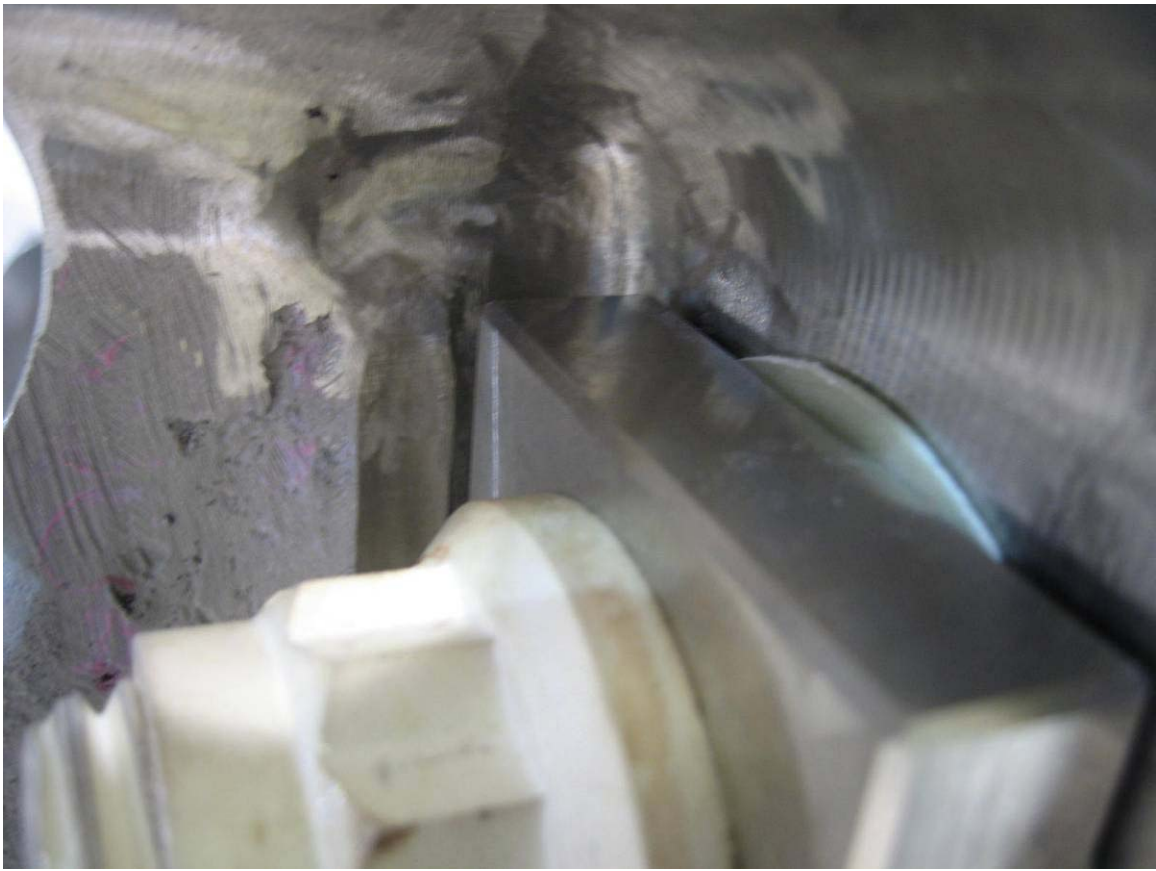


Indication #19



G-11 at Bearing Plate. Edges rounded leaving gap, Also comes close to casting at corner.





Grinding for counterbores.



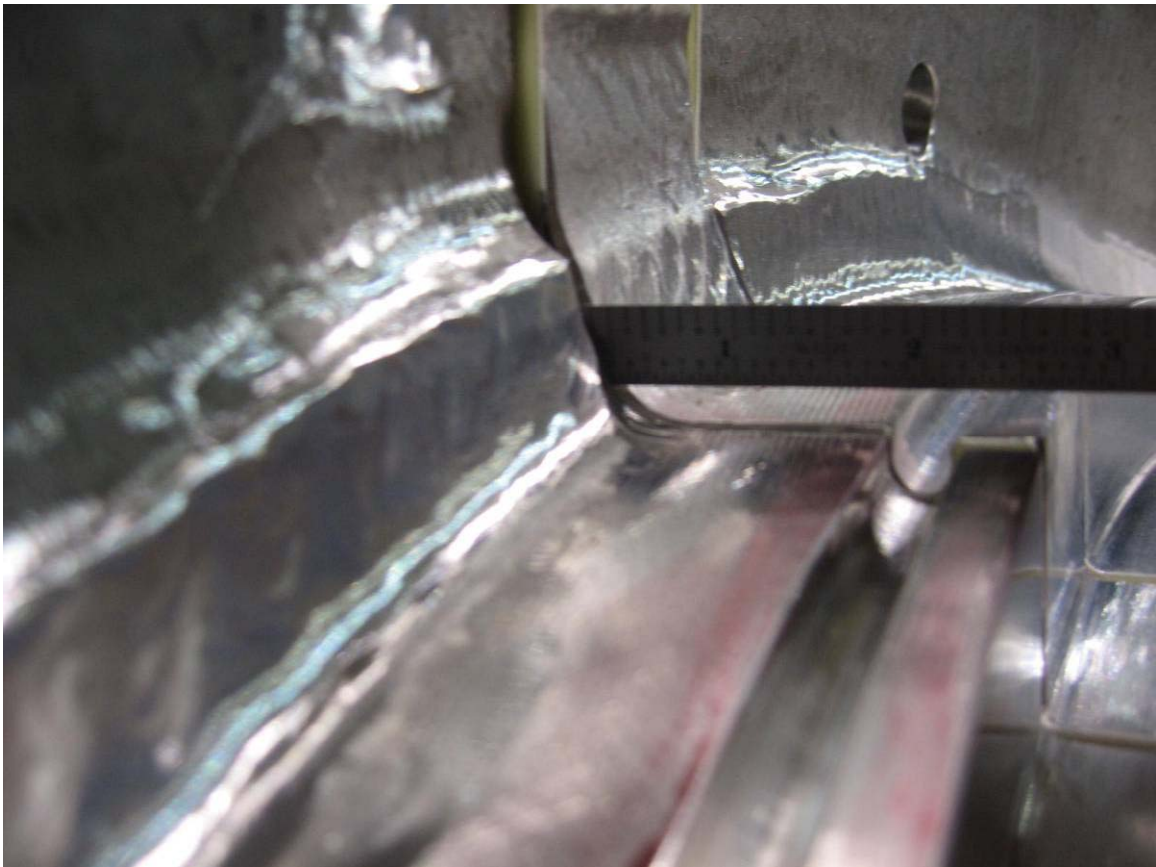
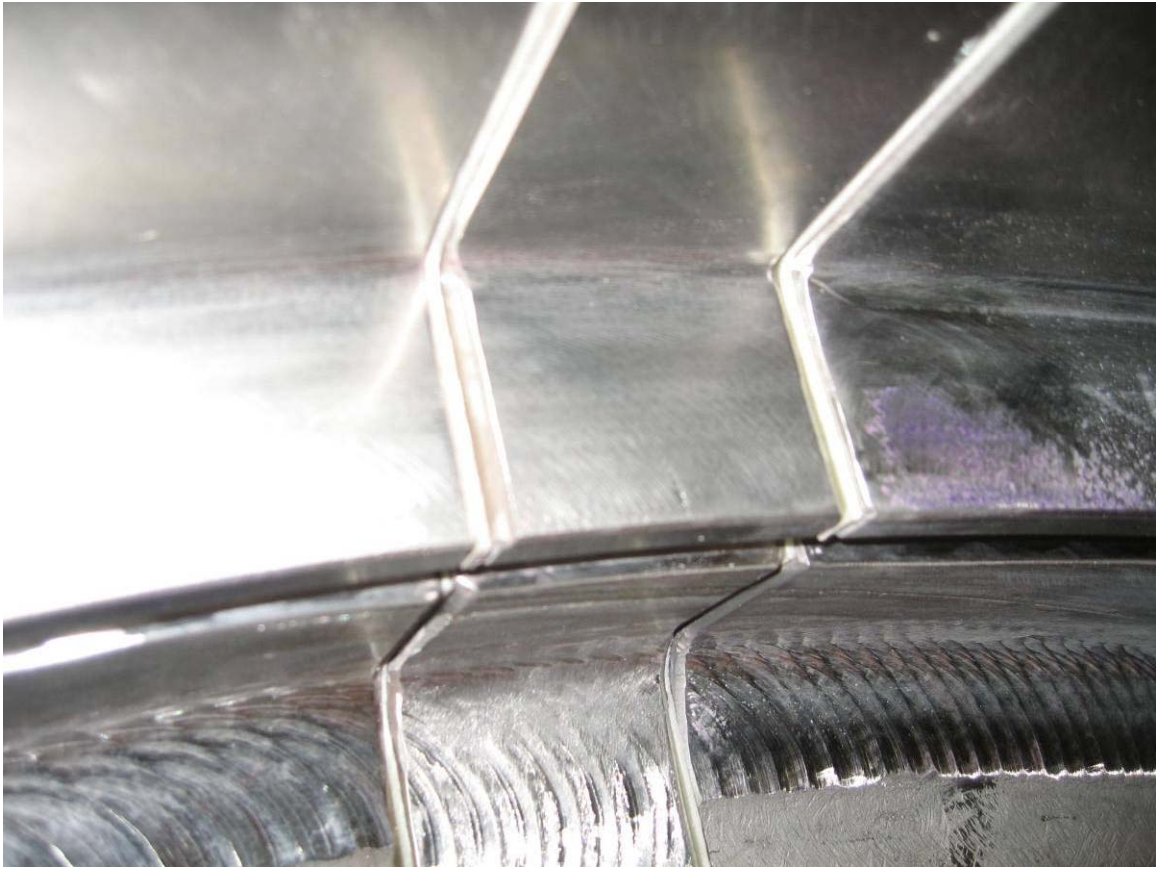


Poloidal Break Fit-Up. Significant gaps where machined-to-print G-11 does not match machined-to-contour Shim.

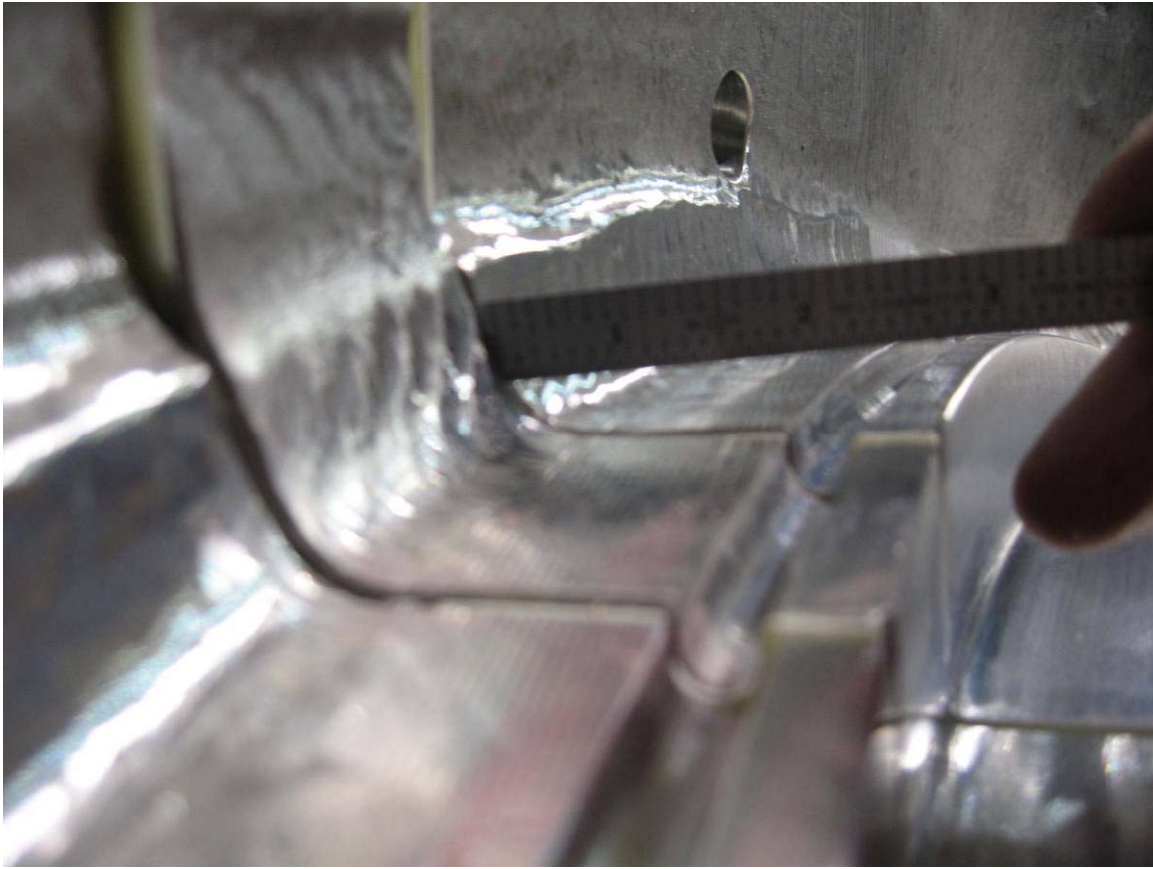












Penetrant on G-11. Break has not yet been tested electrically.



5 High permeability spots found and marked.







VPI groove looks good other than this one spot already identified.

