

PT Inspection Results of B2 – NC20632

1. 1.5" linear located on E side of casting in the radius below the VPI groove near T hole 93.



2. Cluster of linear indications in large cutout adjacent to poloidal break (sheet 8, zone E7). Largest indication is a .400" linear.



3. Cluster of indications on the inner poloidal break flange surface closest to the datum E flange. Largest indication is a .300" linear.

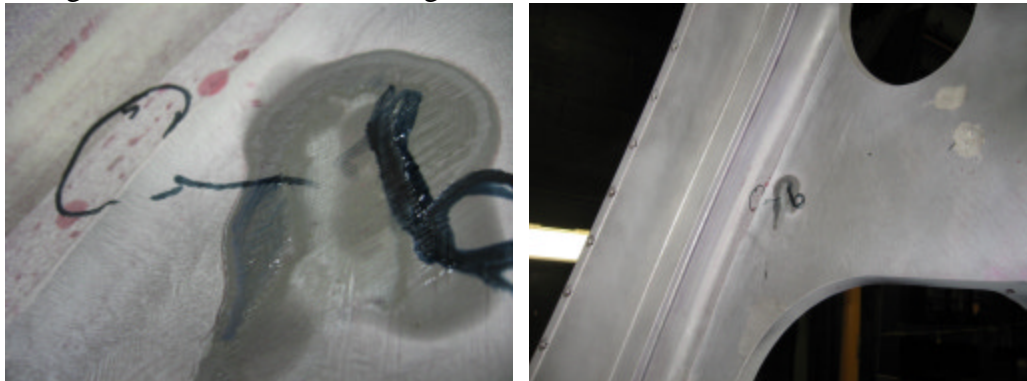


PT Inspection Results of B2 – NC20632

4. Linear indication 1.3" in length on E side inner wing surface.
5. Linear indication .200" in length on E side inner wing surface.

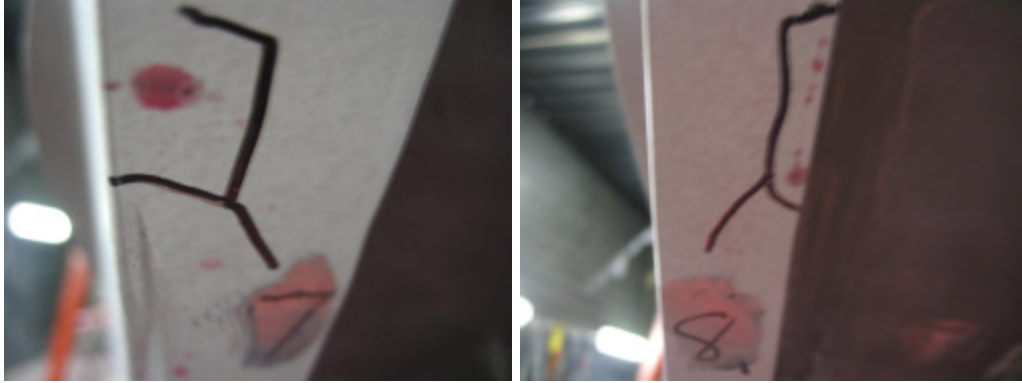


6. Cluster of linear indications located on E side of casting in the radius below the VPI groove near T hole 10. Longest is .200".



PT Inspection Results of B2 – NC20632

7. .500" linear on outer edge of datum E flange between E flange holes 8 and 9.
8. Linear indications on outer edge of E flange near E flange hole 7. Longest is .600".



9. .500" linear on outer edge of datum E flange near E flange hole 5.



PT Inspection Results of B2 – NC20632

10. .200" linear in Ø3.0" hole located on E flange (sht. 5, zone C4).

