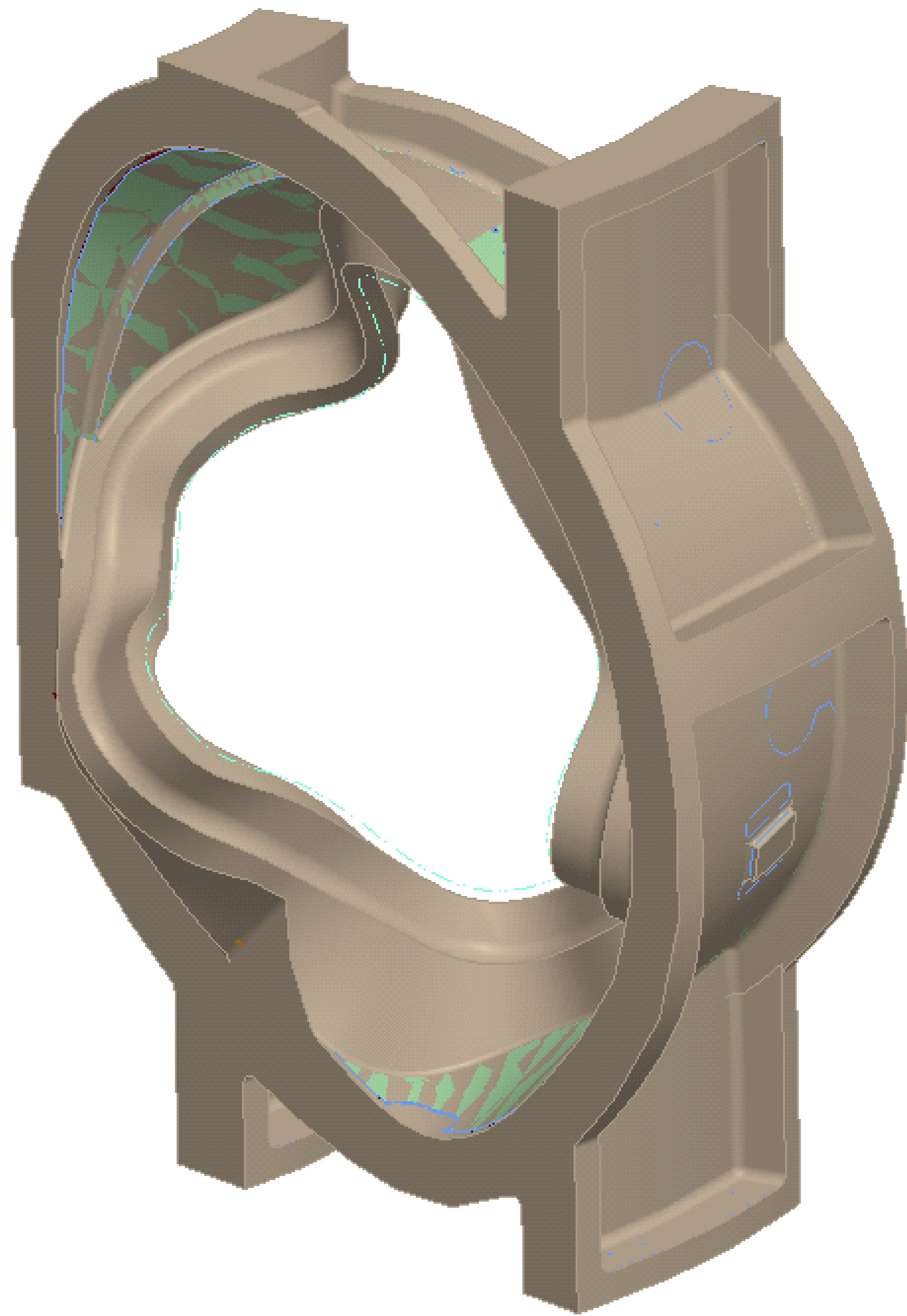


NO.	REVISION	BY	CH	SUP	APPROVED	DATE



EIO model lps-c-coil-stocked-no-shrink
 Extracted from EIO WEB on 10/12/2004

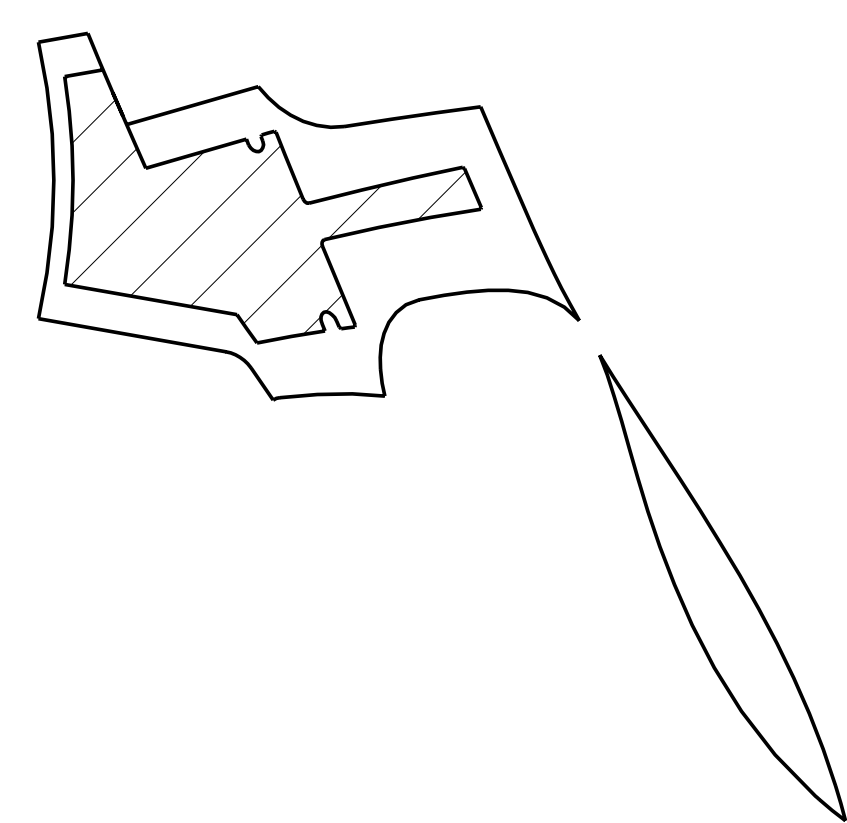
Overlaid with
 Reference model se141-116.prt.2.13

3	SE141-116	PRODUCTION WINDING FORM TYPE-C	CAST SS	1
2	EIO-PROD_TYPE-C-CHECK	Dickart production type C - stocked-no-shrink		1
1	EIO-PROD_TYPE_C	Dickart model lps-c-coil-stocked-no-shrink	--	1
PART NO.	DRAWING NO	NOMENCLATURE OR DESCRIPTION	MATERIAL	QTY RECD
PARTS LIST				
COMPUTER GENERATED DRAWING MANUAL CHANGES NOT PERMITTED		CENTRAL FILES:	PRINCETON PLASMA PHYSICS LABORATORY PRINCETON UNIVERSITY	
Pro E		UNLESS OTHERWISE SPECIFIED	NATIONAL COMPACT STELLARATOR EXPERIMENT	
DO NOT VERIFY INFORMATION BY SCALING DRAWING		DIMENSIONS ARE IN INCHES MACHINE SURFACES	EIO PRODUCTION MODEL CHECK WITH REFERENCE MC	
WEIGHT 37457.3 lbs		TOLERANCES NON-CUMULATIVE	DSN: T BROWN	DRAWING NO:
MODEL NAME EIO-PROD_TYPE-C-CHECK		DECIMAL-INCH FRACTIONS	ENGR: T BROWN	EIO-PROD_TYPE-C CHECK
WELDING ENGINEER		XXX +/- .005 32"-120" +/- .124 ANGULAR +/- .015	SUPV:	SHEET 1 OF 2 REV

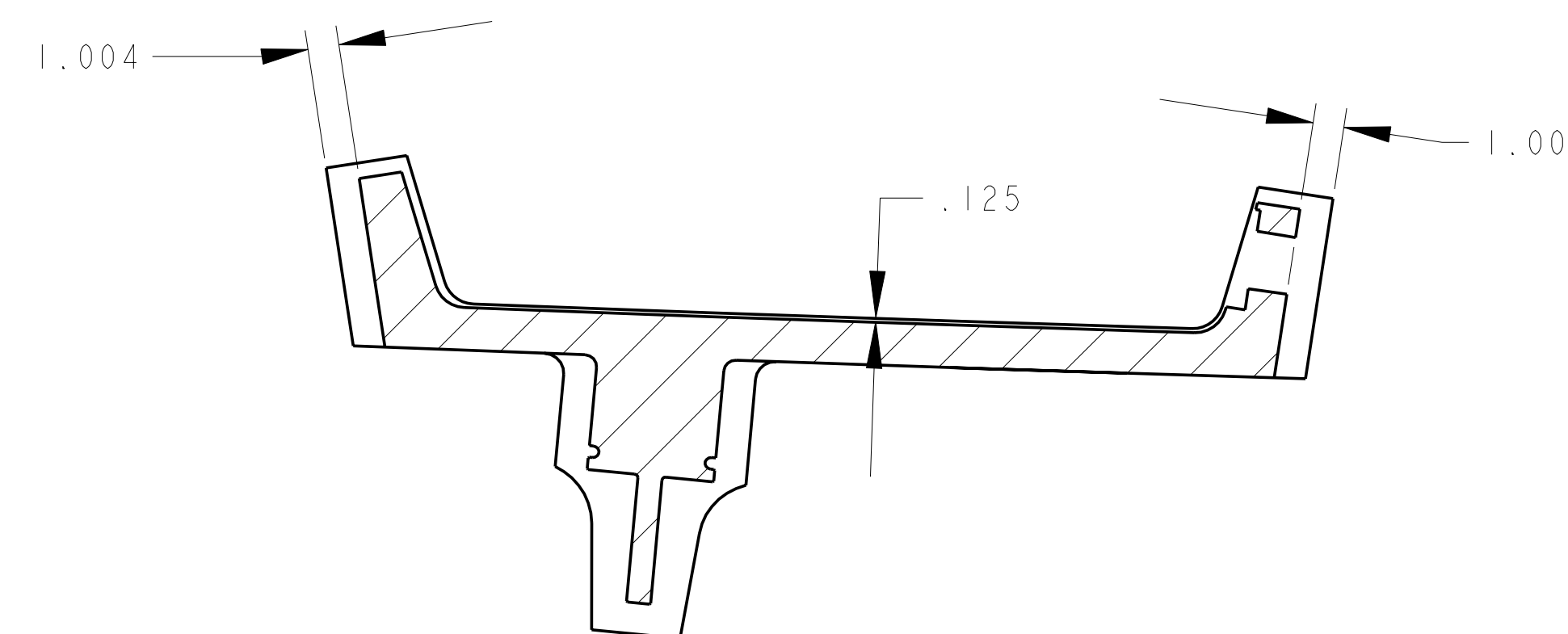
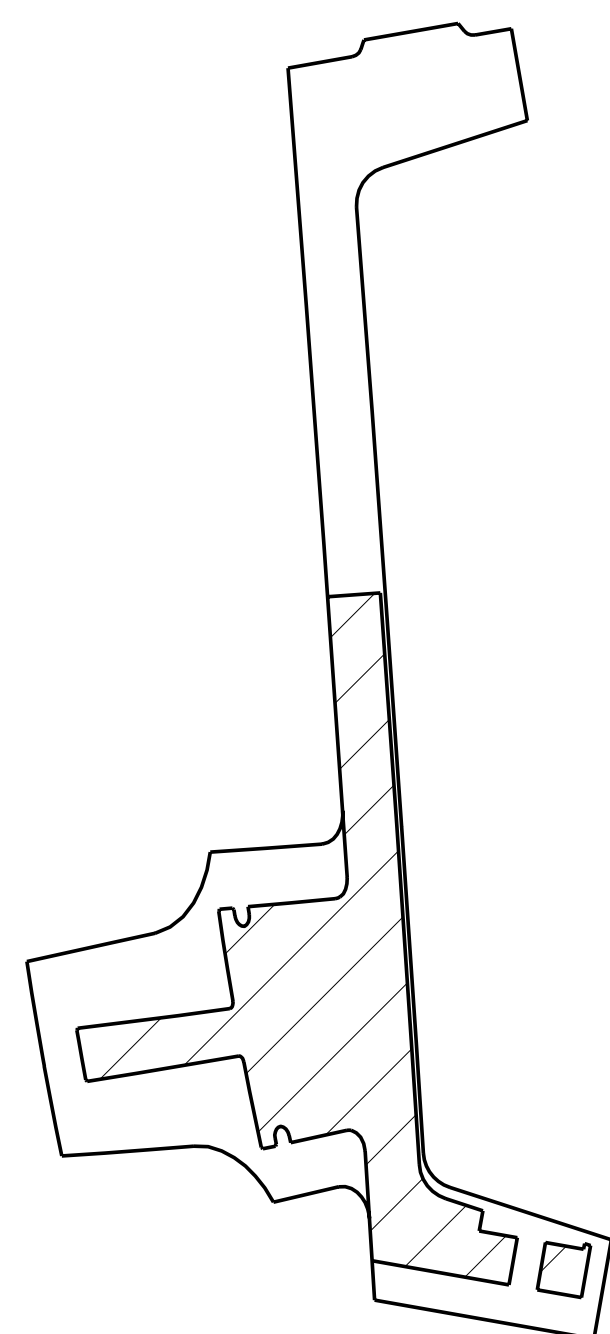
RELEASE LEVEL: WIP
 DWG VERSION NO: 1

NCSX-EIO-PROD_TYPE-C-CHECK

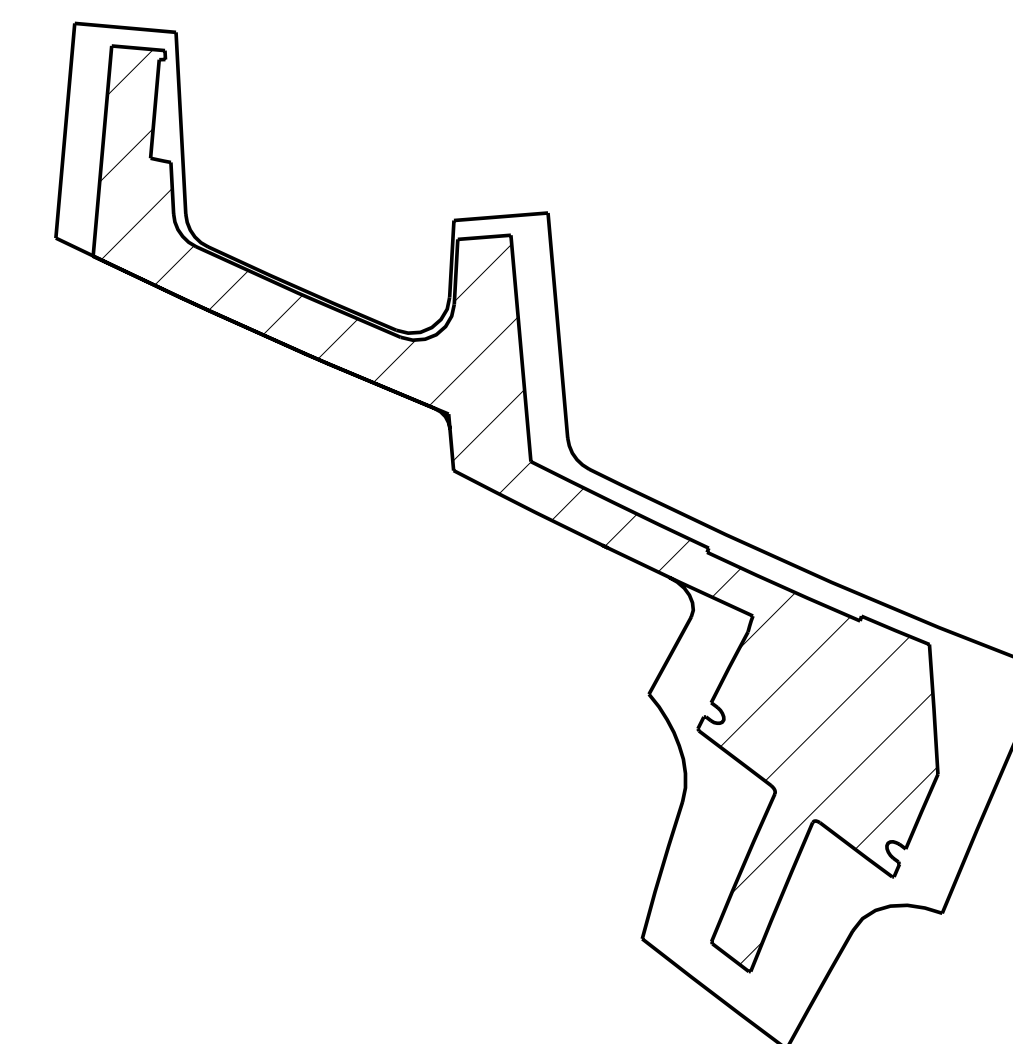
NO.	REVISION	BY	CH	SUP	APPROVED	DATE



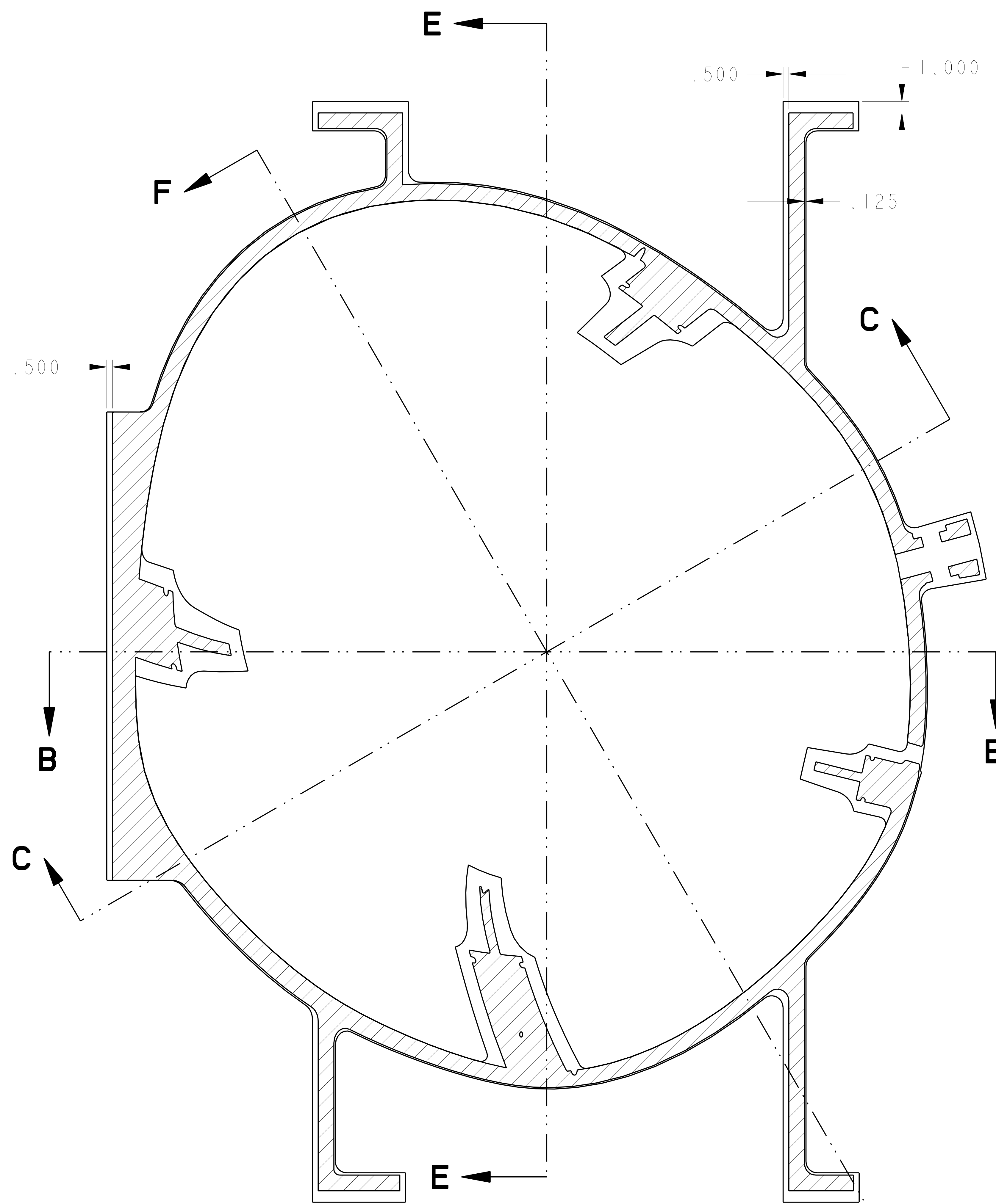
SECTION B-B



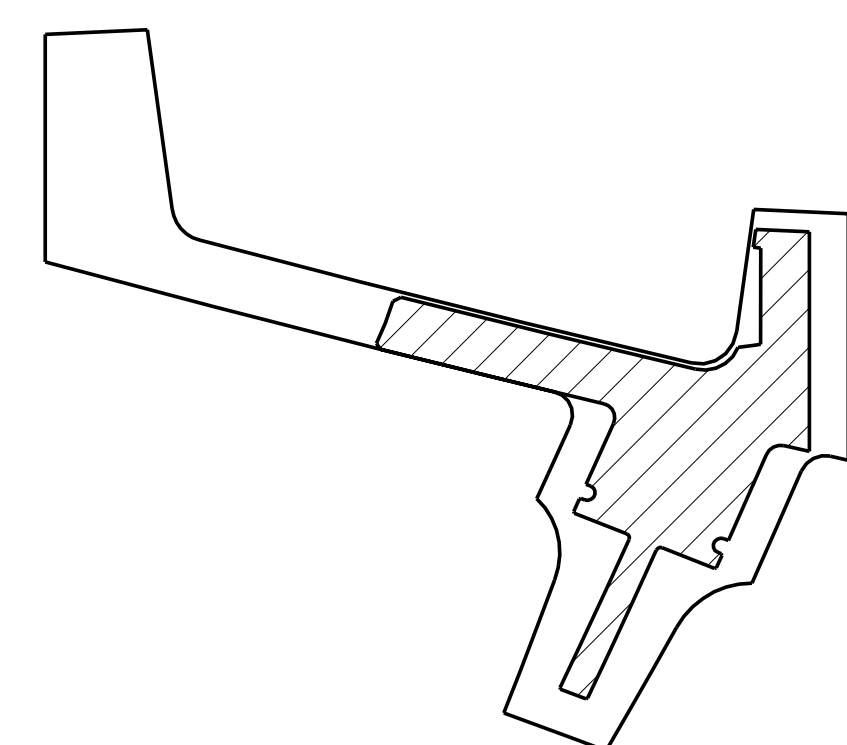
SECTION C-C



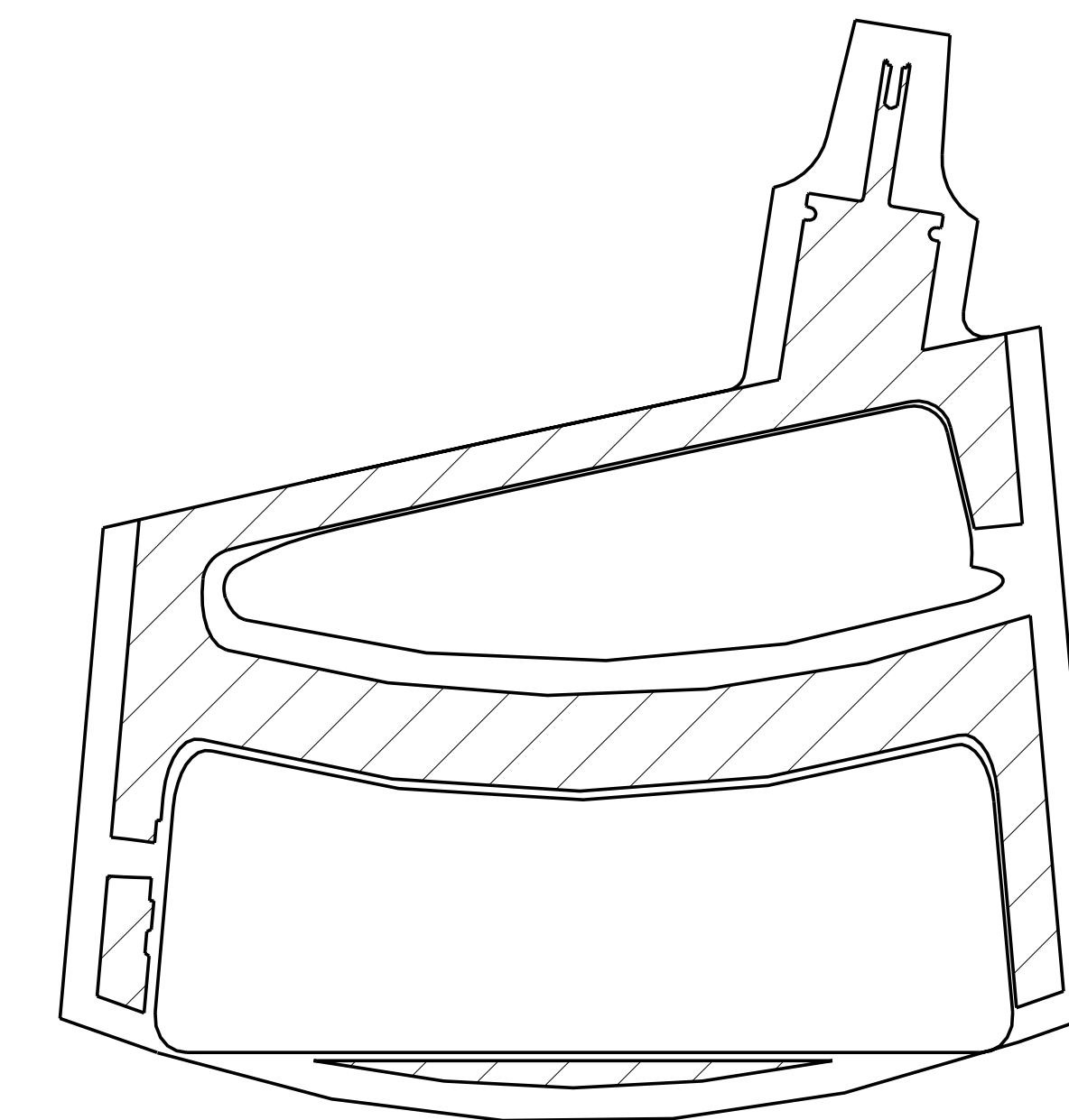
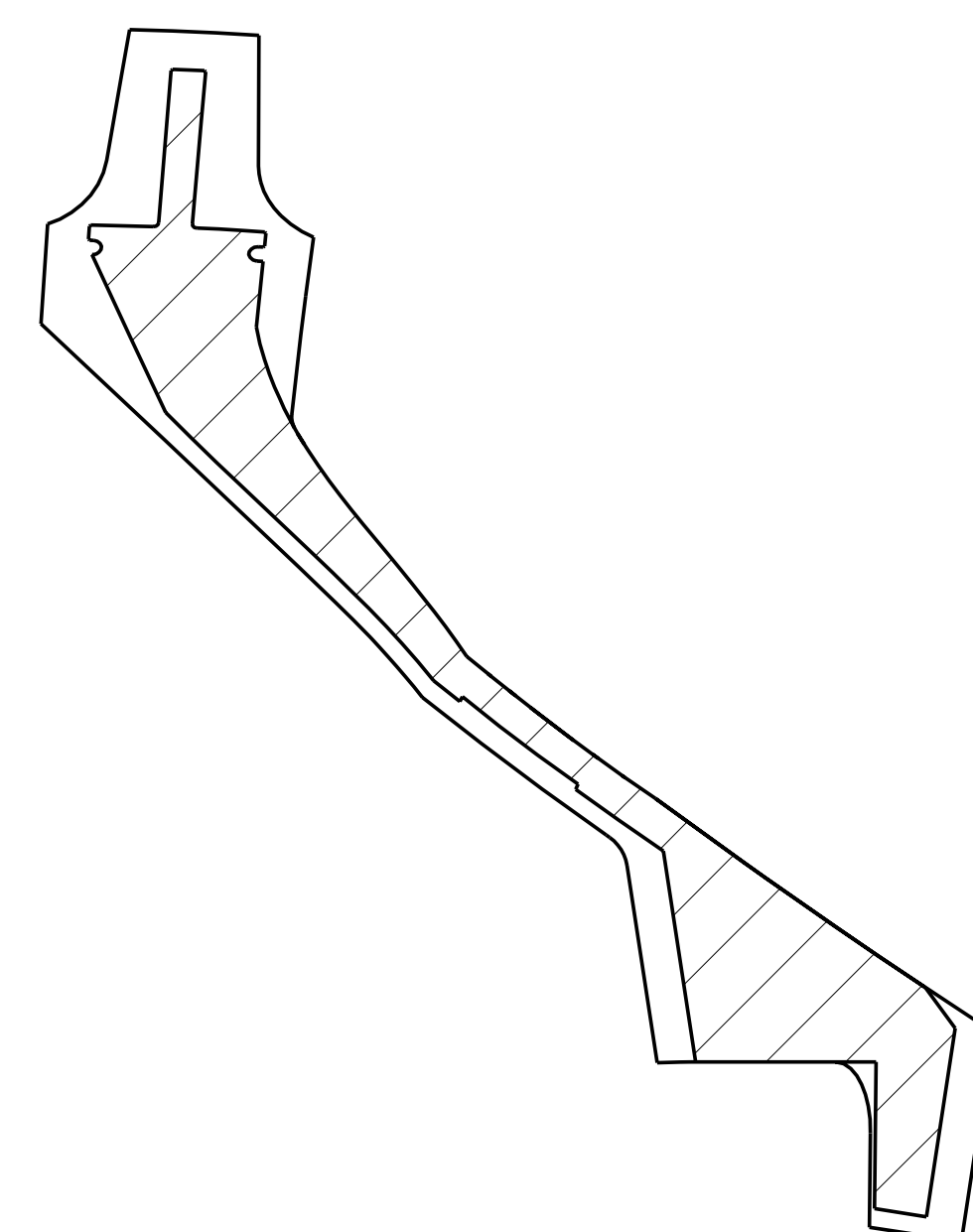
SECTION F-F



SECTION A-A



SECTION E-E



3	SE141-116	PRODUCTION WINDING FORM TYPE-C	CAST SS	1
2	EOI-PROD_TYPE-C_CHECK	Check of Dickart production type C - stocked-no-shrink		1
1	EOI-PROD_TYPE_C	Dickart model lps-c-coil-stocked-no-shrink	--	1
PART NO.	DRAWING NO	NOMENCLATURE OR DESCRIPTION	MATERIAL	QTY RECD

PARTS LIST

COMPUTER GENERATED DRAWING MANUAL CHANGES NOT PERMITTED	CENTRAL FILES: UNLESS OTHERWISE SPECIFIED	PRINCETON PLASMA PHYSICS LABORATORY PRINCETON UNIVERSITY	
Pro E	DIMENSIONS ARE IN INCHES MACHINE SURFACES	NATIONAL COMPACT STELLARATOR EXPERIMENT	
DO NOT VERIFY INFORMATION BY SCALING DRAWING	BREAK SHARP EDGES .005/ .020	EOI-PRODUCTION TYPE-C STOCKED - NO SHRINK	
NEXT ASSEMBLY	TOLERANCES - NON-CUMULATIVE	DSN: T BROWN	DRAWING NO:
	DECIMAL - INCH FRACTIONS	CHK:	EOI-PROD TYPE-C CHECK
	XX .005 12" - 12"	ENGR: T BROWN	SHEET 2 OF 2
	XXX .005 12" - 120"	SUPV:	REV
	ANGULAR: .01" 15'		

RELEASE LEVEL: EOI-PROD_TYPE-C_CHECK
DWG VERSION NO:

WEIGHT	37457.3 lbs
MODEL NAME	EOI-PROD_TYPE-C_CHECK
WELDING ENGINEER	

NCSX-EOI-PROD_TYPE-C-CHECK