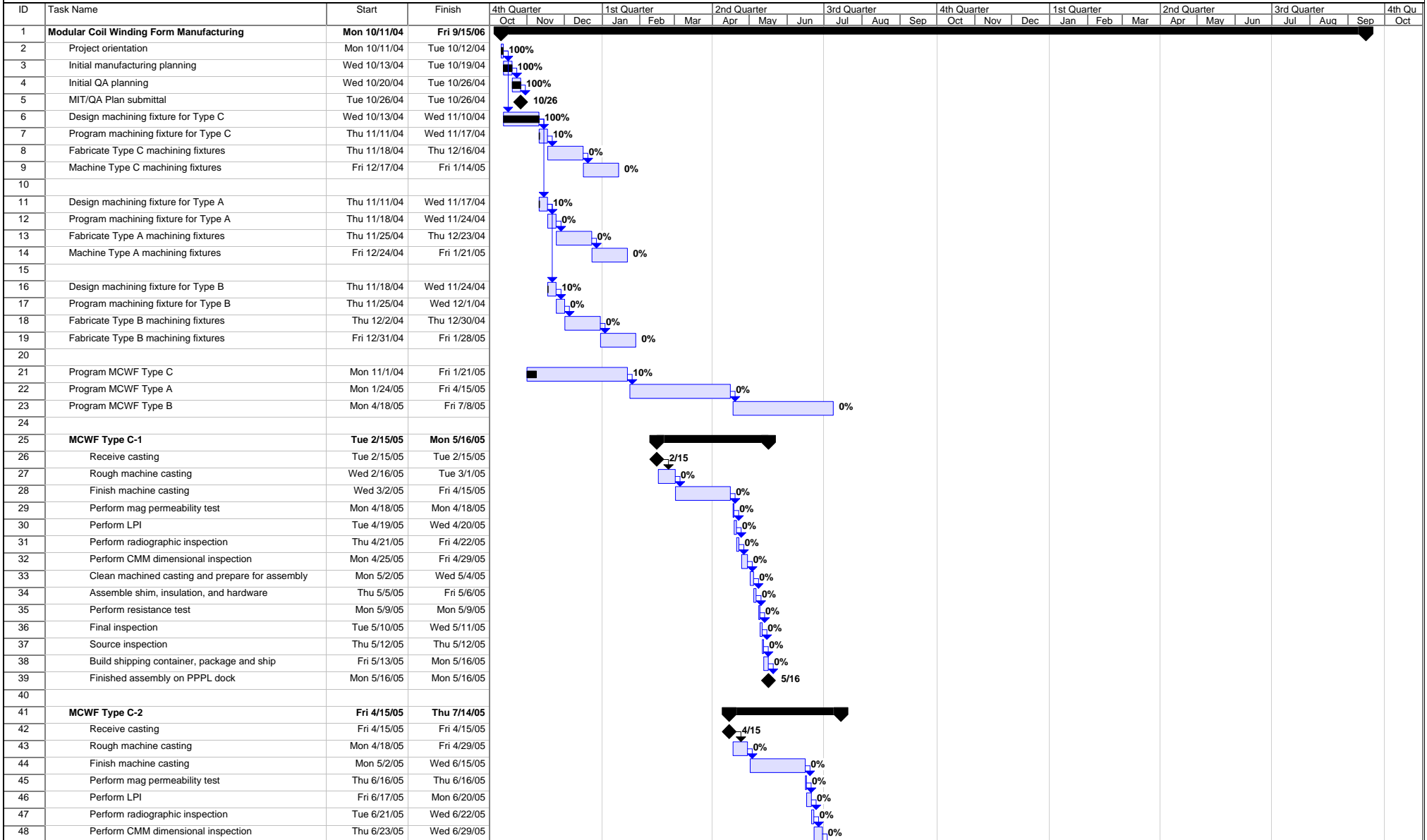




Modular Coil Winding Form Machining and Assembly Type A, B, & C





Modular Coil Winding Form Machining and Assembly Type A, B, & C



ID	Task Name	Start	Finish	4th Quarter			1st Quarter			2nd Quarter			3rd Quarter			4th Quarter			1st Quarter			2nd Quarter			3rd Quarter			4th Qu
				Oct	Nov	Dec	Jan	Feb	Mar	Apr	May	Jun	Jul	Aug	Sep	Oct	Nov	Dec	Jan	Feb	Mar	Apr	May	Jun	Jul	Aug	Sep	Oct
49	Clean machined casting and prepare for assembly	Thu 6/30/05	Mon 7/4/05																									
50	Assemble shim, insulation, and hardware	Tue 7/5/05	Wed 7/6/05																									
51	Perform resistance test	Thu 7/7/05	Thu 7/7/05																									
52	Final inspection	Fri 7/8/05	Mon 7/11/05																									
53	Source inspection	Tue 7/12/05	Tue 7/12/05																									
54	Build shipping container, package and ship	Wed 7/13/05	Thu 7/14/05																									
55	Finished assembly on PPPL dock	Thu 7/14/05	Thu 7/14/05																									
56																												
57	MCWF Type A-1	Tue 5/17/05	Mon 8/15/05																									
58	Receive casting	Tue 5/17/05	Tue 5/17/05																									
59	Rough machine casting	Wed 5/18/05	Tue 5/31/05																									
60	Finish machine casting	Wed 6/1/05	Fri 7/15/05																									
61	Perform mag permeability test	Mon 7/18/05	Mon 7/18/05																									
62	Perform LPI	Tue 7/19/05	Wed 7/20/05																									
63	Perform radiographic inspection	Thu 7/21/05	Fri 7/22/05																									
64	Perform CMM dimensional inspection	Mon 7/25/05	Fri 7/29/05																									
65	Clean machined casting and prepare for assembly	Mon 8/1/05	Wed 8/3/05																									
66	Assemble shim, insulation, and hardware	Thu 8/4/05	Fri 8/5/05																									
67	Perform resistance test	Mon 8/8/05	Mon 8/8/05																									
68	Final inspection	Tue 8/9/05	Wed 8/10/05																									
69	Source inspection	Thu 8/11/05	Thu 8/11/05																									
70	Build shipping container, package and ship	Fri 8/12/05	Mon 8/15/05																									
71	Finished assembly on PPPL dock	Mon 8/15/05	Mon 8/15/05																									
72																												
73	MCWF Type C-3	Fri 6/17/05	Thu 9/15/05																									
74	Receive casting	Fri 6/17/05	Fri 6/17/05																									
75	Rough machine casting	Mon 6/20/05	Fri 7/1/05																									
76	Finish machine casting	Mon 7/4/05	Wed 8/17/05																									
77	Perform mag permeability test	Thu 8/18/05	Thu 8/18/05																									
78	Perform LPI	Fri 8/19/05	Mon 8/22/05																									
79	Perform radiographic inspection	Tue 8/23/05	Wed 8/24/05																									
80	Perform CMM dimensional inspection	Thu 8/25/05	Wed 8/31/05																									
81	Clean machined casting and prepare for assembly	Thu 9/1/05	Mon 9/5/05																									
82	Assemble shim, insulation, and hardware	Tue 9/6/05	Wed 9/7/05																									
83	Perform resistance test	Thu 9/8/05	Thu 9/8/05																									
84	Final inspection	Fri 9/9/05	Mon 9/12/05																									
85	Source inspection	Tue 9/13/05	Tue 9/13/05																									
86	Build shipping container, package and ship	Wed 9/14/05	Thu 9/15/05																									
87	Finished assembly on PPPL dock	Thu 9/15/05	Thu 9/15/05																									
88																												
89	MCWF Type B-1	Mon 7/18/05	Fri 10/14/05																									
90	Receive casting	Mon 7/18/05	Mon 7/18/05																									
91	Rough machine casting	Tue 7/19/05	Mon 8/1/05																									
92	Finish machine casting	Tue 8/2/05	Thu 9/15/05																									
93	Perform mag permeability test	Fri 9/16/05	Fri 9/16/05																									
94	Perform LPI	Mon 9/19/05	Tue 9/20/05																									
95	Perform radiographic inspection	Wed 9/21/05	Thu 9/22/05																									
96	Perform CMM dimensional inspection	Fri 9/23/05	Thu 9/29/05																									

Modular Coil Winding Forms
Date created: 29-Oct-2004
Last revised: 15-Nov-2004

Task Progress Milestone ◆ Summary Subcontract

Modular Coil Winding Form Machining and Assembly Type A, B, & C

ID	Task Name	Start	Finish	4th Quarter			1st Quarter			2nd Quarter			3rd Quarter			4th Quarter			1st Quarter			2nd Quarter			3rd Quarter			4th Qu
				Oct	Nov	Dec	Jan	Feb	Mar	Apr	May	Jun	Jul	Aug	Sep	Oct	Nov	Dec	Jan	Feb	Mar	Apr	May	Jun	Jul	Aug	Sep	Oct
241	Clean machined casting and prepare for assembly	Tue 6/13/06	Thu 6/15/06																									
242	Assemble shim, insulation, and hardware	Fri 6/16/06	Mon 6/19/06																									
243	Perform resistance test	Tue 6/20/06	Tue 6/20/06																									
244	Final inspection	Wed 6/21/06	Thu 6/22/06																									
245	Source inspection	Fri 6/23/06	Fri 6/23/06																									
246	Build shipping container, package and ship	Mon 6/26/06	Tue 6/27/06																									
247	Finished assembly on PPPL dock	Tue 6/27/06	Tue 6/27/06																									
248																												
249	MCWF Type B-6	Fri 4/14/06	Fri 7/14/06																									
250	Receive casting	Fri 4/14/06	Fri 4/14/06																									
251	Rough machine casting	Mon 4/17/06	Fri 4/28/06																									
252	Finish machine casting	Mon 5/1/06	Wed 6/14/06																									
253	Perform mag permeability test	Thu 6/15/06	Thu 6/15/06																									
254	Perform LPI	Fri 6/16/06	Mon 6/19/06																									
255	Perform radiographic inspection	Tue 6/20/06	Wed 6/21/06																									
256	Perform CMM dimensional inspection	Thu 6/22/06	Thu 6/22/06																									
257	Clean machined casting and prepare for assembly	Fri 6/30/06	Tue 7/4/06																									
258	Assemble shim, insulation, and hardware	Wed 7/5/06	Thu 7/6/06																									
259	Perform resistance test	Fri 7/7/06	Fri 7/7/06																									
260	Final inspection	Mon 7/10/06	Tue 7/11/06																									
261	Source inspection	Wed 7/12/06	Wed 7/12/06																									
262	Build shipping container, package and ship	Thu 7/13/06	Fri 7/14/06																									
263	Finished assembly on PPPL dock	Fri 7/14/06	Fri 7/14/06																									
264																												
265	MCWF Type C-4	Tue 5/16/06	Tue 8/15/06																									
266	Receive casting	Tue 5/16/06	Tue 5/16/06																									
267	Rough machine casting	Wed 5/17/06	Tue 5/30/06																									
268	Finish machine casting	Wed 5/31/06	Fri 7/14/06																									
269	Perform mag permeability test	Mon 7/17/06	Mon 7/17/06																									
270	Perform LPI	Tue 7/18/06	Wed 7/19/06																									
271	Perform radiographic inspection	Thu 7/20/06	Fri 7/21/06																									
272	Perform CMM dimensional inspection	Mon 7/24/06	Mon 7/31/06																									
273	Clean machined casting and prepare for assembly	Tue 8/1/06	Thu 8/3/06																									
274	Assemble shim, insulation, and hardware	Fri 8/4/06	Mon 8/7/06																									
275	Perform resistance test	Tue 8/8/06	Tue 8/8/06																									
276	Final inspection	Wed 8/9/06	Thu 8/10/06																									
277	Source inspection	Fri 8/11/06	Fri 8/11/06																									
278	Build shipping container, package and ship	Mon 8/14/06	Tue 8/15/06																									
279	Finished assembly on PPPL dock	Tue 8/15/06	Tue 8/15/06																									
280																												
281	MCWF Type C-5	Tue 5/30/06	Tue 8/29/06																									
282	Receive casting	Tue 5/30/06	Tue 5/30/06																									
283	Rough machine casting	Wed 5/31/06	Tue 6/13/06																									
284	Finish machine casting	Wed 6/14/06	Fri 7/28/06																									
285	Perform mag permeability test	Mon 7/31/06	Mon 7/31/06																									
286	Perform LPI	Tue 8/1/06	Wed 8/2/06																									
287	Perform radiographic inspection	Thu 8/3/06	Fri 8/4/06																									
288	Perform CMM dimensional inspection	Mon 8/7/06	Mon 8/14/06																									

Modular Coil Winding Forms
Date created: 29-Oct-2004
Last revised: 15-Nov-2004

Task Progress Milestone Summary Subcontract



Modular Coil Winding Form Machining and Assembly Type A, B, & C



ID	Task Name	Start	Finish	4th Quarter			1st Quarter			2nd Quarter			3rd Quarter			4th Quarter			1st Quarter			2nd Quarter			3rd Quarter			4th Qu
				Oct	Nov	Dec	Jan	Feb	Mar	Apr	May	Jun	Jul	Aug	Sep	Oct	Nov	Dec	Jan	Feb	Mar	Apr	May	Jun	Jul	Aug	Sep	Oct
289	Clean machined casting and prepare for assembly	Tue 8/15/06	Thu 8/17/06																									
290	Assemble shim, insulation, and hardware	Fri 8/18/06	Mon 8/21/06																									
291	Perform resistance test	Tue 8/22/06	Tue 8/22/06																									
292	Final inspection	Wed 8/23/06	Thu 8/24/06																									
293	Source inspection	Fri 8/25/06	Fri 8/25/06																									
294	Build shipping container, package and ship	Mon 8/28/06	Tue 8/29/06																									
295	Finished assembly on PPPL dock	Tue 8/29/06	Tue 8/29/06																									
296																												
297	MCWF Type C-6	Fri 6/16/06	Fri 9/15/06																									
298	Receive casting	Fri 6/16/06	Fri 6/16/06																									
299	Rough machine casting	Mon 6/19/06	Fri 6/30/06																									
300	Finish machine casting	Mon 7/3/06	Wed 8/16/06																									
301	Perform mag permeability test	Thu 8/17/06	Thu 8/17/06																									
302	Perform LPI	Fri 8/18/06	Mon 8/21/06																									
303	Perform radiographic inspection	Tue 8/22/06	Wed 8/23/06																									
304	Perform CMM dimensional inspection	Thu 8/24/06	Thu 8/31/06																									
305	Clean machined casting and prepare for assembly	Fri 9/1/06	Tue 9/5/06																									
306	Assemble shim, insulation, and hardware	Wed 9/6/06	Thu 9/7/06																									
307	Perform resistance test	Fri 9/8/06	Fri 9/8/06																									
308	Final inspection	Mon 9/11/06	Tue 9/12/06																									
309	Source inspection	Wed 9/13/06	Wed 9/13/06																									
310	Build shipping container, package and ship	Thu 9/14/06	Fri 9/15/06																									
311	Finished assembly on PPPL dock	Fri 9/15/06	Fri 9/15/06																									
312																												
313	Project Complete	Fri 9/15/06	Fri 9/15/06																									