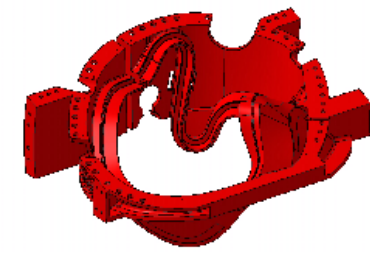
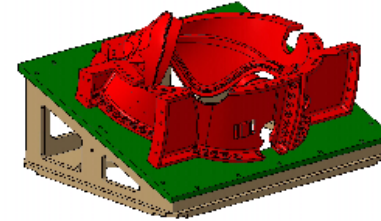


Modular Coil Winding Form Machining and Assembly Type A, B, & C

ID	Task Name	Start	Finish	4th Quarter			1st Quarter			2nd Quarter			3rd Quarter			4th Quarter			1st Quarter			2nd Quarter			3rd Quarter			4th Qu			
				Oct	Nov	Dec	Jan	Feb	Mar	Apr	May	Jun	Jul	Aug	Sep	Oct	Nov	Dec	Jan	Feb	Mar	Apr	May	Jun	Jul	Aug	Sep	Oct			
1	Modular Coil Winding Form Manufacturing	Mon 10/11/04	Fri 9/15/06																												
2	Project orientation	Mon 10/11/04	Tue 10/12/04	100%																											
3	Initial manufacturing planning	Wed 10/13/04	Tue 10/19/04	100%																											
4	Initial QA planning	Wed 10/20/04	Tue 10/26/04	100%																											
5	MIT/QA Plan submittal	Tue 10/26/04	Tue 10/26/04	10/26																											
6	Design machining fixture for Type C	Wed 10/13/04	Wed 11/10/04	100%																											
7	Program machining fixture for Type C	Thu 11/11/04	Wed 11/24/04	100%																											
8	Fabricate Type C machining fixtures	Wed 12/22/04	Tue 12/28/04	10%																											
9	Machine Type C machining fixtures	Wed 12/29/04	Wed 1/26/05	0%																											
10																															
11	Design machining fixture for Type A	Tue 11/30/04	Mon 12/6/04	100%																											
12	Program machining fixture for Type A	Mon 12/20/04	Fri 12/24/04	100%																											
13	Machine Type A machining fixtures	Mon 1/17/05	Mon 2/14/05	0%																											
14																															
15	Design machining fixture for Type B	Wed 12/15/04	Tue 12/21/04	100%																											
16	Program machining fixture for Type B	Wed 12/22/04	Tue 12/28/04	100%																											
17	Machine Type B machining fixtures	Mon 2/14/05	Mon 3/14/05	0%																											
18																															
19	Program MCWF Type C	Mon 11/1/04	Fri 2/4/05	50%																											
20	Program MCWF Type A	Mon 2/7/05	Fri 5/13/05	20%																											
21	Program MCWF Type B	Mon 5/16/05	Fri 8/19/05	20%																											
22																															
23	MCWF Type C-1	Tue 2/15/05	Mon 5/16/05																												
24	Receive casting	Tue 2/15/05	Tue 2/15/05	2/15																											
25	Rough machine casting	Wed 2/16/05	Tue 3/1/05	0%																											
26	Finish machine casting	Wed 3/2/05	Fri 4/15/05	0%																											
27	Perform mag permeability test	Mon 4/18/05	Mon 4/18/05	0%																											
28	Perform LPI	Tue 4/19/05	Wed 4/20/05	0%																											
29	Perform radiographic inspection	Thu 4/21/05	Fri 4/22/05	0%																											
30	Perform CMM dimensional inspection	Mon 4/25/05	Fri 4/29/05	0%																											
31	Clean machined casting and prepare for assembly	Mon 5/2/05	Wed 5/4/05	0%																											
32	Assemble shim, insulation, and hardware	Thu 5/5/05	Fri 5/6/05	0%																											
33	Perform resistance test	Mon 5/9/05	Mon 5/9/05	0%																											
34	Final inspection	Tue 5/10/05	Wed 5/11/05	0%																											
35	Source inspection	Thu 5/12/05	Thu 5/12/05	0%																											
36	Build shipping container, package and ship	Fri 5/13/05	Mon 5/16/05	0%																											
37	Finished assembly on PPPL dock	Mon 5/16/05	Mon 5/16/05	5/16																											
38																															
39	MCWF Type C-2	Fri 4/15/05	Thu 7/14/05																												
40	Receive casting	Fri 4/15/05	Fri 4/15/05	4/15																											
41	Rough machine casting	Mon 4/18/05	Fri 4/29/05	0%																											
42	Finish machine casting	Mon 5/2/05	Wed 6/15/05	0%																											
43	Perform mag permeability test	Thu 6/16/05	Thu 6/16/05	0%																											
44	Perform LPI	Fri 6/17/05	Mon 6/20/05	0%																											
45	Perform radiographic inspection	Tue 6/21/05	Wed 6/22/05	0%																											
46	Perform CMM dimensional inspection	Thu 6/23/05	Wed 6/29/05	0%																											
47	Clean machined casting and prepare for assembly	Thu 6/30/05	Mon 7/4/05	0%																											
48	Assemble shim, insulation, and hardware	Tue 7/5/05	Wed 7/6/05	0%																											
49	Perform resistance test	Thu 7/7/05	Thu 7/7/05	0%																											
50	Final inspection	Fri 7/8/05	Mon 7/11/05	0%																											

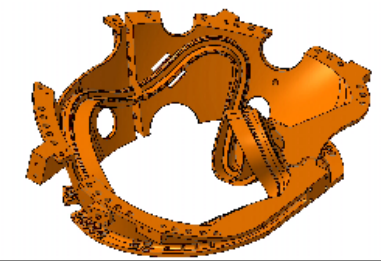
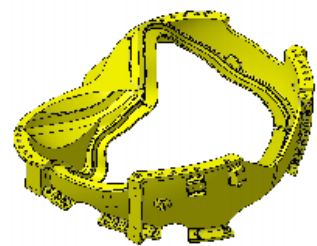


Modular Coil Winding Forms
 Date created: 29-Oct-2004
 Last revised: 21-Dec-2004



Modular Coil Winding Form Machining and Assembly Type A, B, & C

ID	Task Name	Start	Finish	4th Quarter			1st Quarter			2nd Quarter			3rd Quarter			4th Quarter			1st Quarter			2nd Quarter			3rd Quarter			4th Qu
				Oct	Nov	Dec	Jan	Feb	Mar	Apr	May	Jun	Jul	Aug	Sep	Oct	Nov	Dec	Jan	Feb	Mar	Apr	May	Jun	Jul	Aug	Sep	Oct
51	Source inspection	Tue 7/12/05	Tue 7/12/05																									
52	Build shipping container, package and ship	Wed 7/13/05	Thu 7/14/05																									
53	Finished assembly on PPPL dock	Thu 7/14/05	Thu 7/14/05																									
54																												
55	MCWF Type A-1	Tue 5/17/05	Mon 8/15/05																									
56	Receive casting	Tue 5/17/05	Tue 5/17/05																									
57	Rough machine casting	Wed 5/18/05	Tue 5/31/05																									
58	Finish machine casting	Wed 6/1/05	Fri 7/15/05																									
59	Perform mag permeability test	Mon 7/18/05	Mon 7/18/05																									
60	Perform LPI	Tue 7/19/05	Wed 7/20/05																									
61	Perform radiographic inspection	Thu 7/21/05	Fri 7/22/05																									
62	Perform CMM dimensional inspection	Mon 7/25/05	Fri 7/29/05																									
63	Clean machined casting and prepare for assembly	Mon 8/1/05	Wed 8/3/05																									
64	Assemble shim, insulation, and hardware	Thu 8/4/05	Fri 8/5/05																									
65	Perform resistance test	Mon 8/8/05	Mon 8/8/05																									
66	Final inspection	Tue 8/9/05	Wed 8/10/05																									
67	Source inspection	Thu 8/11/05	Thu 8/11/05																									
68	Build shipping container, package and ship	Fri 8/12/05	Mon 8/15/05																									
69	Finished assembly on PPPL dock	Mon 8/15/05	Mon 8/15/05																									
70																												
71	MCWF Type C-3	Fri 6/17/05	Thu 9/15/05																									
72	Receive casting	Fri 6/17/05	Fri 6/17/05																									
73	Rough machine casting	Mon 6/20/05	Fri 7/1/05																									
74	Finish machine casting	Mon 7/4/05	Wed 8/17/05																									
75	Perform mag permeability test	Thu 8/18/05	Thu 8/18/05																									
76	Perform LPI	Fri 8/19/05	Mon 8/22/05																									
77	Perform radiographic inspection	Tue 8/23/05	Wed 8/24/05																									
78	Perform CMM dimensional inspection	Thu 8/25/05	Wed 8/31/05																									
79	Clean machined casting and prepare for assembly	Thu 9/1/05	Mon 9/5/05																									
80	Assemble shim, insulation, and hardware	Tue 9/6/05	Wed 9/7/05																									
81	Perform resistance test	Thu 9/8/05	Thu 9/8/05																									
82	Final inspection	Fri 9/9/05	Mon 9/12/05																									
83	Source inspection	Tue 9/13/05	Tue 9/13/05																									
84	Build shipping container, package and ship	Wed 9/14/05	Thu 9/15/05																									
85	Finished assembly on PPPL dock	Thu 9/15/05	Thu 9/15/05																									
86																												
87	MCWF Type B-1	Mon 7/18/05	Fri 10/14/05																									
88	Receive casting	Mon 7/18/05	Mon 7/18/05																									
89	Rough machine casting	Tue 7/19/05	Mon 8/1/05																									
90	Finish machine casting	Tue 8/2/05	Thu 9/15/05																									
91	Perform mag permeability test	Fri 9/16/05	Fri 9/16/05																									
92	Perform LPI	Mon 9/19/05	Tue 9/20/05																									
93	Perform radiographic inspection	Wed 9/21/05	Thu 9/22/05																									
94	Perform CMM dimensional inspection	Fri 9/23/05	Thu 9/29/05																									
95	Clean machined casting and prepare for assembly	Fri 9/30/05	Tue 10/4/05																									
96	Assemble shim, insulation, and hardware	Wed 10/5/05	Thu 10/6/05																									
97	Perform resistance test	Fri 10/7/05	Fri 10/7/05																									
98	Final inspection	Mon 10/10/05	Tue 10/11/05																									
99	Source inspection	Wed 10/12/05	Wed 10/12/05																									
100	Build shipping container, package and ship	Thu 10/13/05	Fri 10/14/05																									



Modular Coil Winding Forms
 Date created: 29-Oct-2004
 Last revised: 21-Dec-2004

Task Progress Milestone ◆ Summary Subcontract

Modular Coil Winding Form Machining and Assembly Type A, B, & C

ID	Task Name	Start	Finish	4th Quarter			1st Quarter			2nd Quarter			3rd Quarter			4th Quarter			1st Quarter			2nd Quarter			3rd Quarter			4th Qu
				Oct	Nov	Dec	Jan	Feb	Mar	Apr	May	Jun	Jul	Aug	Sep	Oct	Nov	Dec	Jan	Feb	Mar	Apr	May	Jun	Jul	Aug	Sep	Oct
151	MCWF Type A-5	Wed 11/16/05	Wed 2/15/06																									
152	Receive casting	Wed 11/16/05	Wed 11/16/05																									
153	Rough machine casting	Thu 11/17/05	Wed 11/30/05																									
154	Finish machine casting	Thu 12/1/05	Mon 1/16/06																									
155	Perform mag permeability test	Tue 1/17/06	Tue 1/17/06																									
156	Perform LPI	Wed 1/18/06	Thu 1/19/06																									
157	Perform radiographic inspection	Fri 1/20/06	Mon 1/23/06																									
158	Perform CMM dimensional inspection	Tue 1/24/06	Tue 1/31/06																									
159	Clean machined casting and prepare for assembly	Wed 2/1/06	Fri 2/3/06																									
160	Assemble shim, insulation, and hardware	Mon 2/6/06	Tue 2/7/06																									
161	Perform resistance test	Wed 2/8/06	Wed 2/8/06																									
162	Final inspection	Thu 2/9/06	Fri 2/10/06																									
163	Source inspection	Mon 2/13/06	Mon 2/13/06																									
164	Build shipping container, package and ship	Tue 2/14/06	Wed 2/15/06																									
165	Finished assembly on PPPL dock	Wed 2/15/06	Wed 2/15/06																									
166																												
167	MCWF Type A-6	Wed 12/14/05	Wed 3/15/06																									
168	Receive casting	Wed 12/14/05	Wed 12/14/05																									
169	Rough machine casting	Thu 12/15/05	Wed 12/28/05																									
170	Finish machine casting	Thu 12/29/05	Mon 2/13/06																									
171	Perform mag permeability test	Tue 2/14/06	Tue 2/14/06																									
172	Perform LPI	Wed 2/15/06	Thu 2/16/06																									
173	Perform radiographic inspection	Fri 2/17/06	Mon 2/20/06																									
174	Perform CMM dimensional inspection	Tue 2/21/06	Tue 2/28/06																									
175	Clean machined casting and prepare for assembly	Wed 3/1/06	Fri 3/3/06																									
176	Assemble shim, insulation, and hardware	Mon 3/6/06	Tue 3/7/06																									
177	Perform resistance test	Wed 3/8/06	Wed 3/8/06																									
178	Final inspection	Thu 3/9/06	Fri 3/10/06																									
179	Source inspection	Mon 3/13/06	Mon 3/13/06																									
180	Build shipping container, package and ship	Tue 3/14/06	Wed 3/15/06																									
181	Finished assembly on PPPL dock	Wed 3/15/06	Wed 3/15/06																									
182																												
183	MCWF Type B-2	Fri 1/13/06	Fri 4/14/06																									
184	Receive casting	Fri 1/13/06	Fri 1/13/06																									
185	Rough machine casting	Mon 1/16/06	Fri 1/27/06																									
186	Finish machine casting	Mon 1/30/06	Wed 3/15/06																									
187	Perform mag permeability test	Thu 3/16/06	Thu 3/16/06																									
188	Perform LPI	Fri 3/17/06	Mon 3/20/06																									
189	Perform radiographic inspection	Tue 3/21/06	Wed 3/22/06																									
190	Perform CMM dimensional inspection	Thu 3/23/06	Thu 3/30/06																									
191	Clean machined casting and prepare for assembly	Fri 3/31/06	Tue 4/4/06																									
192	Assemble shim, insulation, and hardware	Wed 4/5/06	Thu 4/6/06																									
193	Perform resistance test	Fri 4/7/06	Fri 4/7/06																									
194	Final inspection	Mon 4/10/06	Tue 4/11/06																									
195	Source inspection	Wed 4/12/06	Wed 4/12/06																									
196	Build shipping container, package and ship	Thu 4/13/06	Fri 4/14/06																									
197	Finished assembly on PPPL dock	Fri 4/14/06	Fri 4/14/06																									
198																												
199	MCWF Type B-3	Mon 2/13/06	Mon 5/15/06																									
200	Receive casting	Mon 2/13/06	Mon 2/13/06																									

Modular Coil Winding Forms
Date created: 29-Oct-2004
Last revised: 21-Dec-2004

Task Progress Milestone Summary Subcontract



Modular Coil Winding Form Machining and Assembly Type A, B, & C



ID	Task Name	Start	Finish	4th Quarter			1st Quarter			2nd Quarter			3rd Quarter			4th Quarter			1st Quarter			2nd Quarter			3rd Quarter			4th Qu
				Oct	Nov	Dec	Jan	Feb	Mar	Apr	May	Jun	Jul	Aug	Sep	Oct	Nov	Dec	Jan	Feb	Mar	Apr	May	Jun	Jul	Aug	Sep	Oct
301	Perform radiographic inspection	Tue 8/22/06	Wed 8/23/06																									
302	Perform CMM dimensional inspection	Thu 8/24/06	Thu 8/31/06																									
303	Clean machined casting and prepare for assembly	Fri 9/1/06	Tue 9/5/06																									
304	Assemble shim, insulation, and hardware	Wed 9/6/06	Thu 9/7/06																									
305	Perform resistance test	Fri 9/8/06	Fri 9/8/06																									
306	Final inspection	Mon 9/11/06	Tue 9/12/06																									
307	Source inspection	Wed 9/13/06	Wed 9/13/06																									
308	Build shipping container, package and ship	Thu 9/14/06	Fri 9/15/06																									
309	Finished assembly on PPPL dock	Fri 9/15/06	Fri 9/15/06																									
310																												
311	Project Complete	Fri 9/15/06	Fri 9/15/06																									

