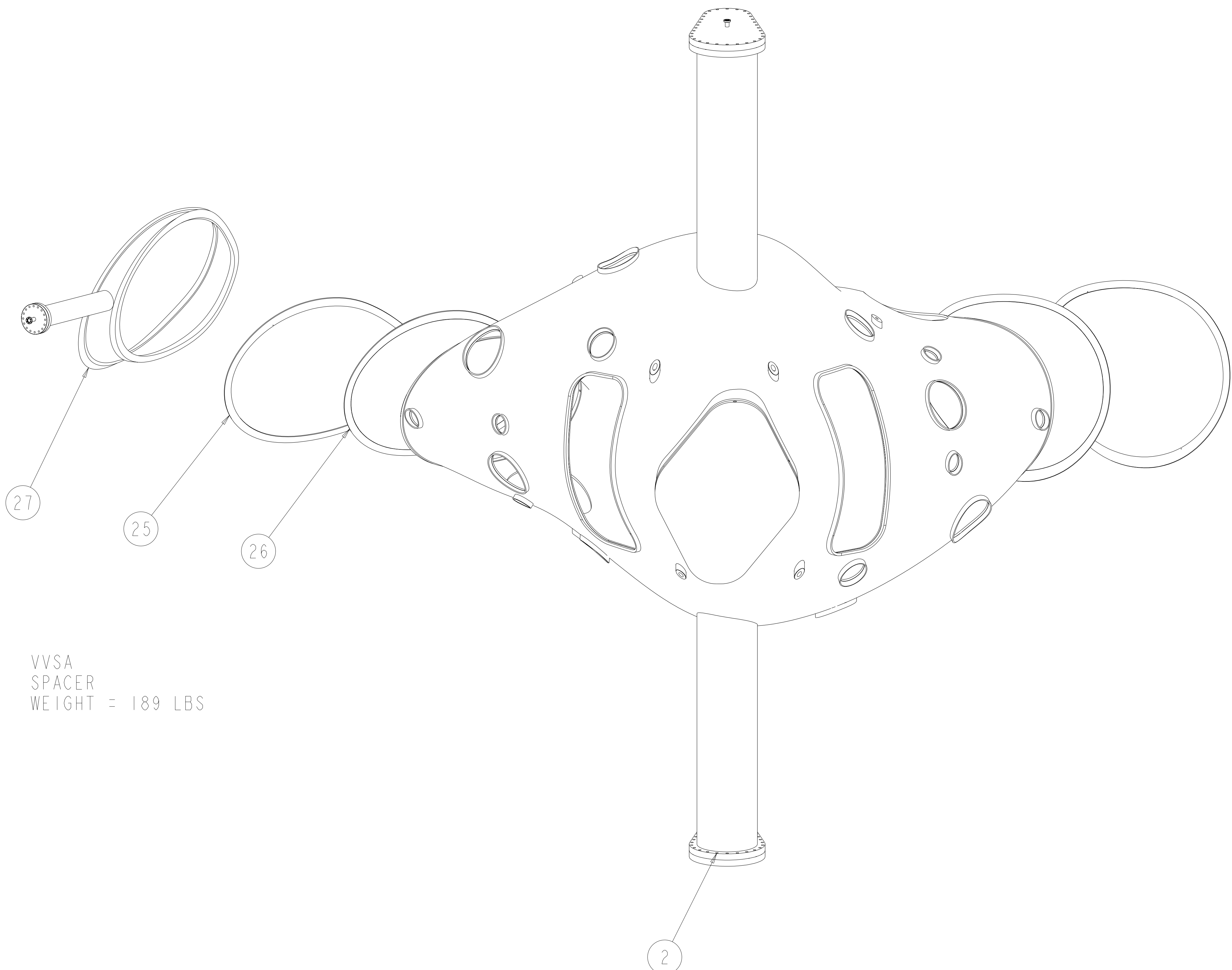
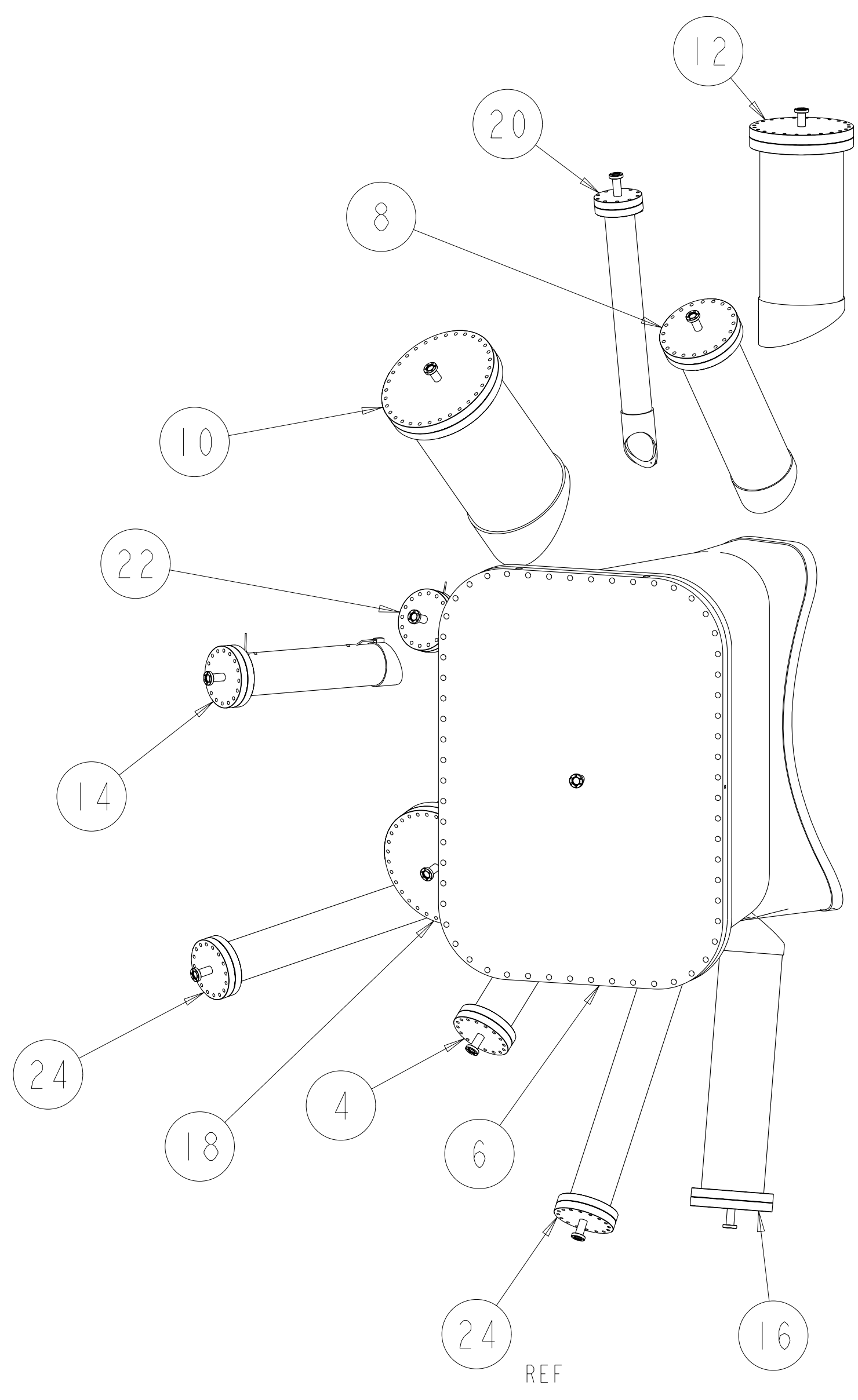


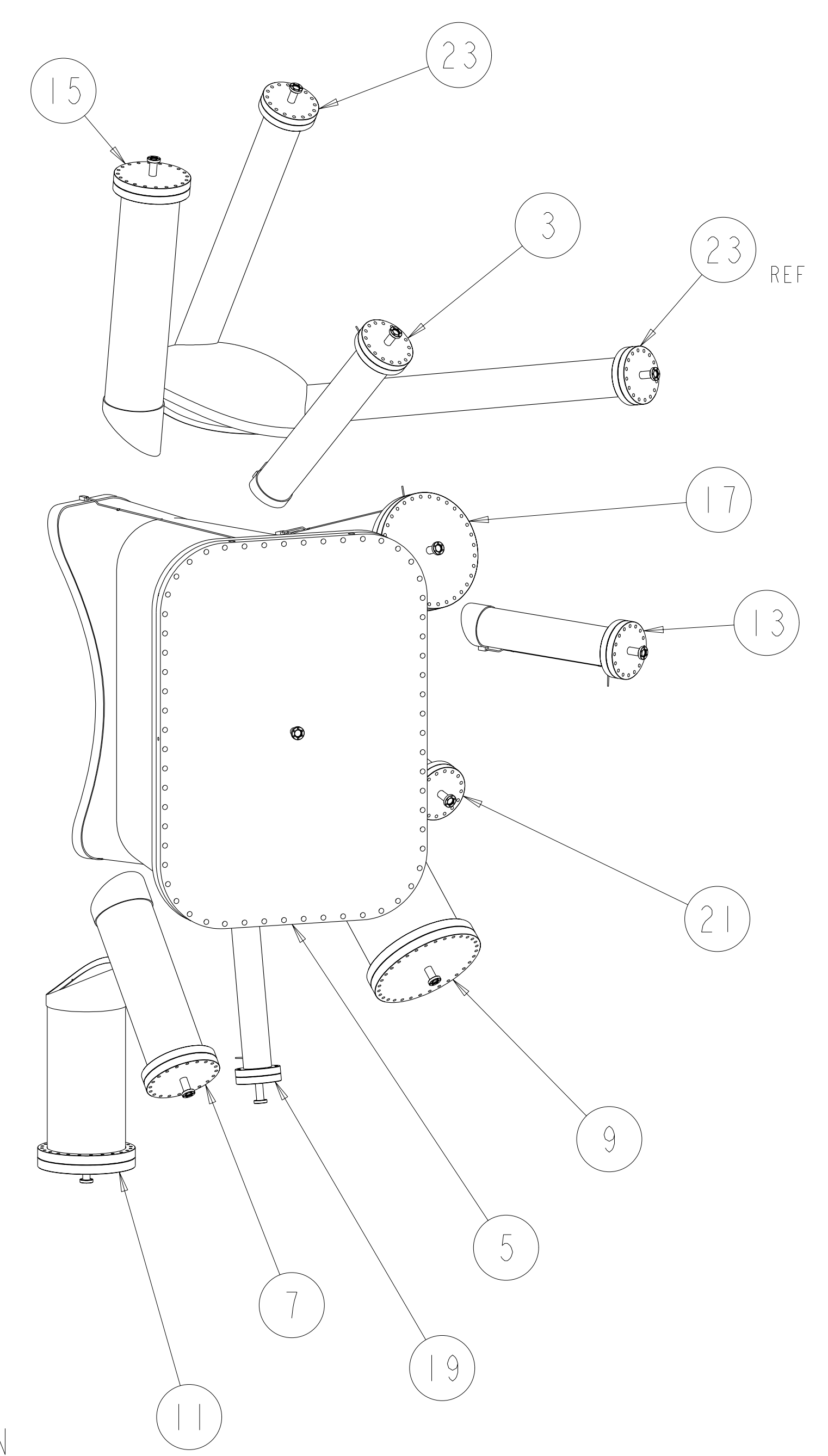
- NOTES:
1. INTERPRET DIMENSIONS AND TOLERANCES PER ANSI Y14.5M
  2. DIMENSIONS ARE IN INCHES
  3. FABRICATION, INSPECTION, AND TESTING SHALL BE PERFORMED IN ACCORDANCE WITH SPECIFICATION NCSX-CSPEC-121-02 AND STATEMENT OF WORK NCSX-SOW-121-03.



VVSA SPACER  
 WEIGHT = 189 LBS



VVSA PORT EXTENSION  
 WEIGHT = 2800 LBS



VVSA PERIOD ASSEMBLY AND BLANK COVER  
 WEIGHT = 4385 LBS

SCALE: 0.09

**RELEASED FOR FABRICATION / INSTALLATION**  
 PPPL Drafting:

1	SE121-014	VACUUM VESSEL SPACER LEAK CHECK ASSEMBLY	27
2	SE121-102	VACUUM VESSEL BLANK OFF COVER SEAL WELD'MT	26
2	SE121-095	VACUUM VESSEL SEAL DETAIL	25
1	SE122-007-2	DOME B WELDMENT	24
1	SE122-007-1	DOME A WELDMENT	23
1	SE120-005-18	PORT 15B WELDMENT	22
1	SE120-005-17	PORT 15A WELDMENT	21
1	SE120-005-16	PORT 11B WELDMENT	20
1	SE120-005-15	PORT 11A WELDMENT	19
1	SE120-005-14	PORT 10B WELDMENT	18
1	SE120-005-13	PORT 10A WELDMENT	17
1	SE120-005-12	PORT 9B WELDMENT	16
1	SE120-005-11	PORT 9A WELDMENT	15
1	SE120-005-10	PORT 8B WELDMENT	14
1	SE120-005-9	PORT 8A WELDMENT	13
1	SE120-005-8	PORT 7B WELDMENT	12
1	SE120-005-7	PORT 7A WELDMENT	11
1	SE120-005-6	PORT 6B WELDMENT	10
1	SE120-005-5	PORT 6A WELDMENT	9
1	SE120-005-4	PORT 5B WELDMENT	8
1	SE120-005-3	PORT 5A WELDMENT	7
1	SE122-006-2	PORT 4B WELDMENT	6
1	SE122-006-1	PORT 4A WELDMENT	5
1	SE120-005-2	PORT 2B WELDMENT	4
1	SE120-005-1	PORT 2A WELDMENT	3
1	SE120-003	VACUUM VESSEL PERIOD ASSEMBLY	2
1	-1	VACUUM VESSEL SUB-ASSEMBLY (VVSA)	1

next assy	AR	CAGE CODE	PART OR IDENTIFYING NO	NOMENCLATURE OR DESCRIPTION	MATERIAL	SPECIFICATION	FIND NO
SE120-001				NEXT ASSEMBLY			

NO REPRESENTATION OR WARRANTY, EXPRESSED OR IMPLIED, IS MADE AS TO THE ACCURACY, COMPLETENESS OR USEFULNESS OF THE INFORMATION OR STATEMENTS CONTAINED IN THESE DRAWINGS, OR THAT THE USE OR DISCLOSURE OF ANY INFORMATION, APPARATUS, METHOD OR PROCESS DISCLOSED IN THESE DRAWINGS MAY NOT INFRINGE PRIVATE RIGHTS OF OTHERS. NO LIABILITY IS ASSUMED WITH RESPECT TO THE USE OF, OR FOR DAMAGES RESULTING FROM THE USE OF, ANY INFORMATION, APPARATUS, METHOD OR PROCESS DISCLOSED IN THESE DRAWINGS. DRAWINGS MADE AVAILABLE FOR INFORMATION TO BIDDER ARE NOT TO BE USED FOR OTHER PURPOSES, AND ARE TO BE RETURNED UPON REQUEST OF THE FORWARDING CONTRACTOR.

**P** THIS DRAWING PRODUCED ON PRO-ENGINEER

REVISED PER ECN-4933	MJC	11/27/04	PLG
△ PART NO. WAS SE120-007-1, AND-2			
△ PART NO. WAS SE120-020			
△ PART NO. WAS SE120-006-2			
△ PART NO. WAS SE120-006-1			

SCALE AS NOTED	DES. P. L. GORANSON	6/04
TOLERANCES UNLESS OTHERWISE SPECIFIED	DRW. G. H. JONES	6/04
FRACTIONS	CHK. M. J. COLE	6/04
XX DECIMALS ±.01	DEPT.	
XXX DECIMALS ±.005	PE	
ANGLES ±0°15'	CR	
BREAK SHARP EDGES .06 MAX	PJ	
FINISH .125 UNLESS OTHERWISE SPECIFIED	RD	
PPPL DRFT J. SIEGEL	6/04	
VERSION NO.	PLANT	BLDG
O+	X-10	5700
FL	SHT	OF
3	1	1
TYPE	CLASS	
A	U	
RELEASE LEVEL		
Fabrication		
DRAWING APPROVALS	DATE	

**UT-BATTELLE** Oak Ridge National Laboratory  
 managed for the DEPARTMENT OF ENERGY under  
 U.S. GOVERNMENT contract DE-AC05-00OR22725  
 UT-BATTELLE, LLC, Oak Ridge, Tennessee  
 PROJECT NAME  
**NATIONAL COMPACT STELLARATOR EXPERIMENT**  
**VACUUM VESSEL SUB ASSEMBLY (VVSA)**

SE120-002