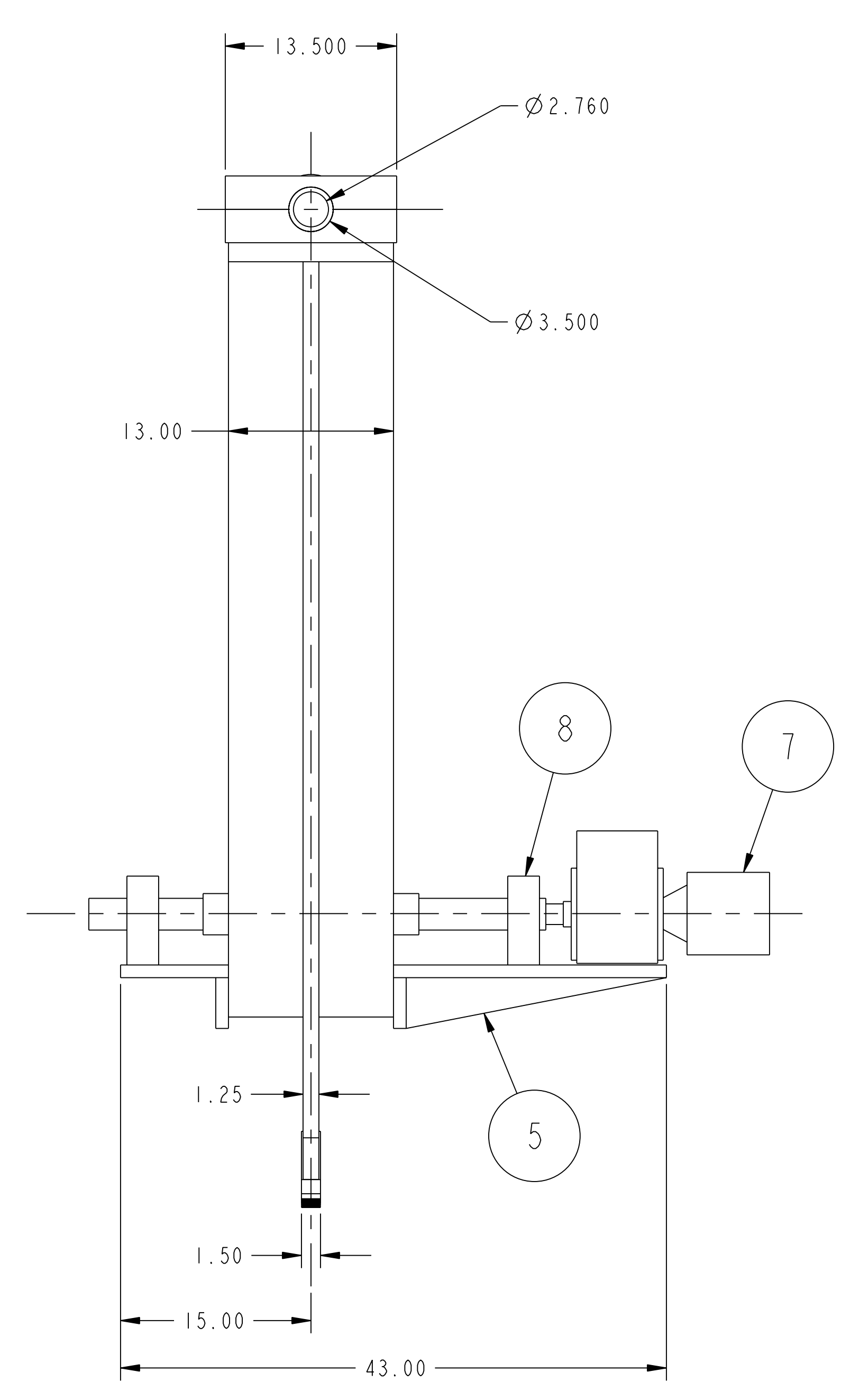
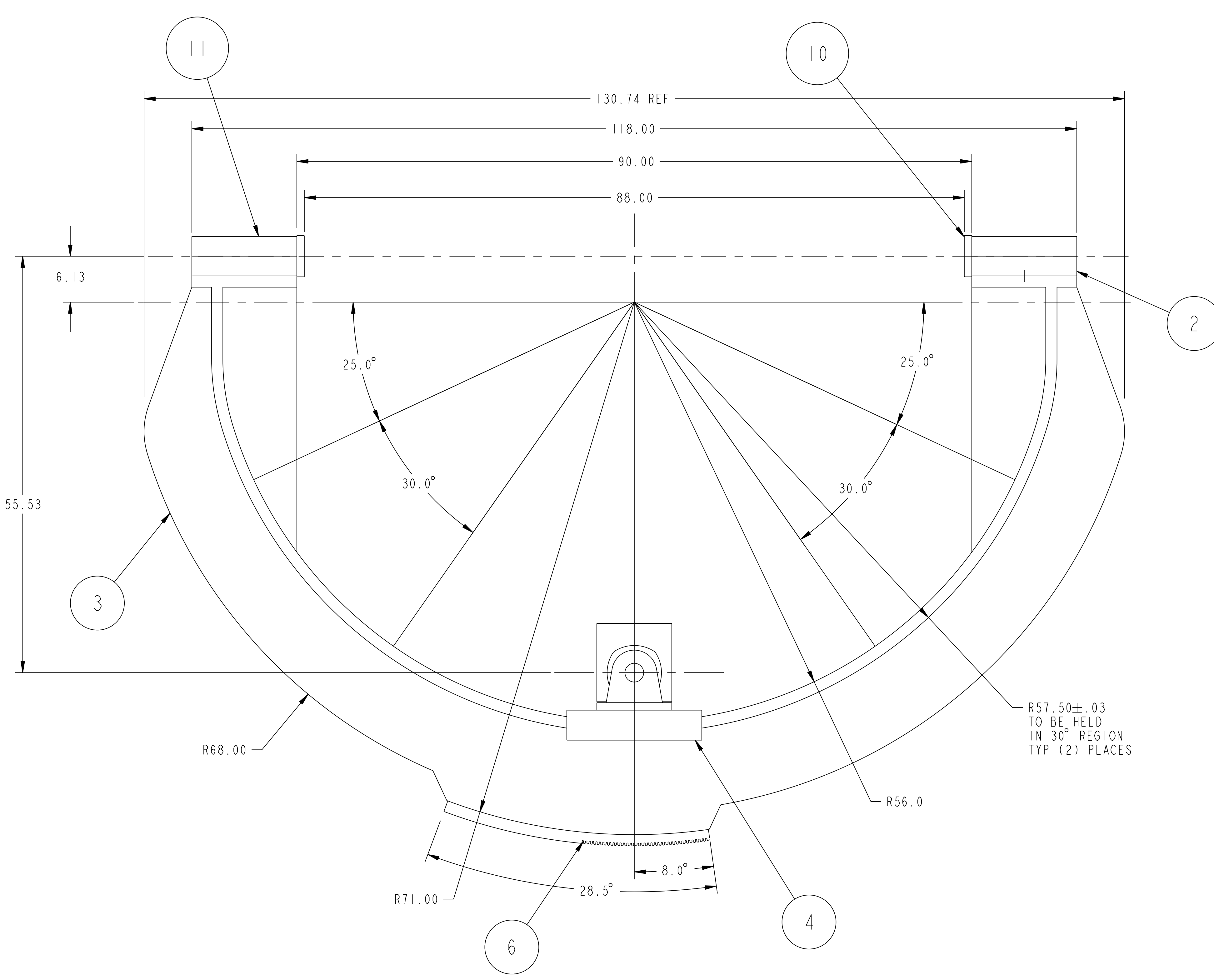
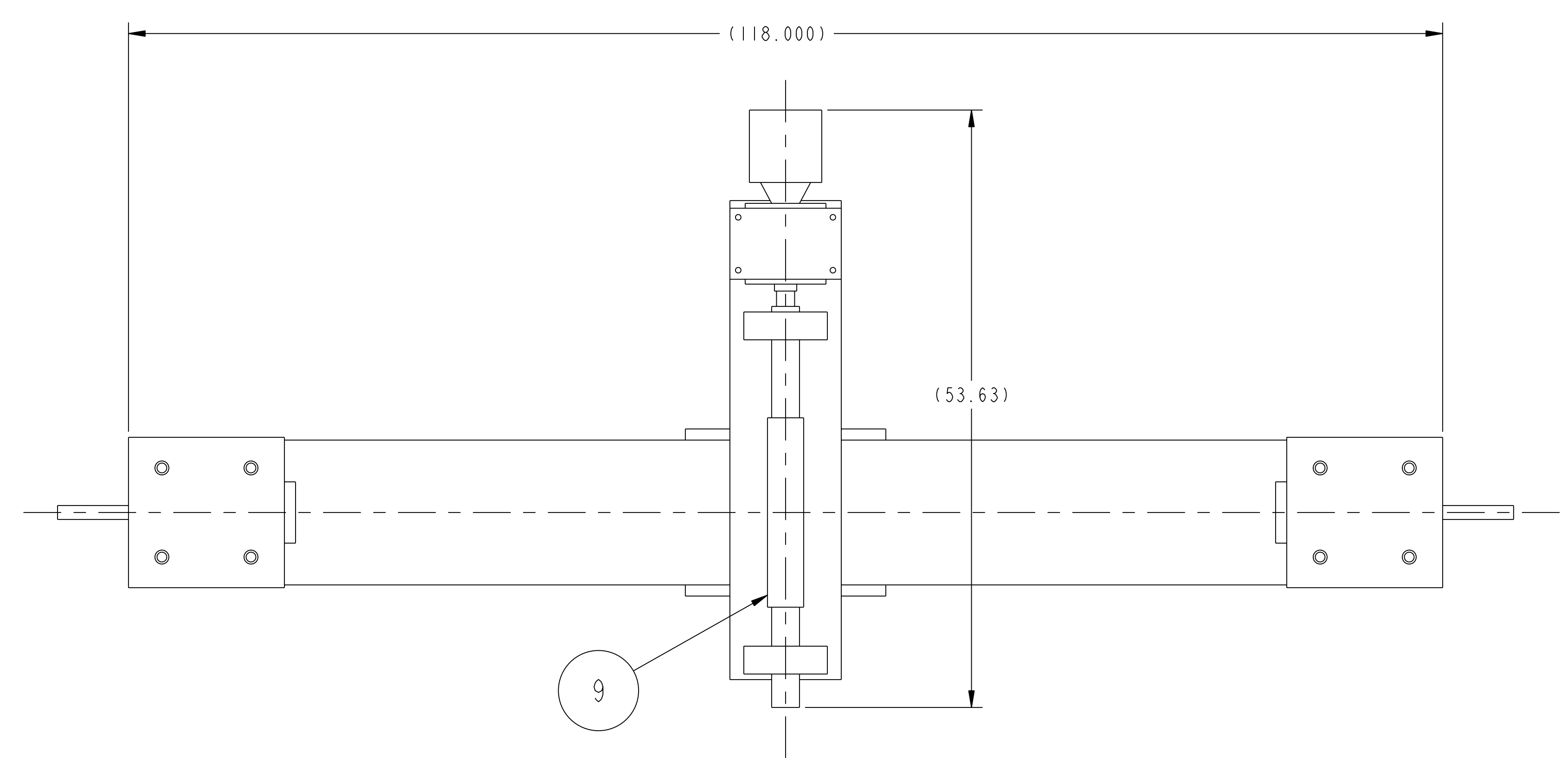


NO.	REVISION	BY	CH	SUP	APPROVED	DATE



1
ASSEMBLY
 SCALE: 0.125
 1 REQ'D

PART NO.	DRAWING NO	NOMENCLATURE OR DESCRIPTION	MATERIAL	QTY REQD
11	SE185-014B	BLOCK, PIVOT	ASTM A36	2
10	SE185-065	PIVOT AXLE	ASTM A108	2
9	SE185-063	GEAR, WORM	ASTM A108	1
8	SE185-052	DRIVE AXLE SUPPORT	ASTM A36	2
7	SE185-051	GEARMOTOR	--	1
6	SE185-046-1	ROLLED RACK GEAR - 8 PITCH	STEEL	1
5	SE185-032	PLATE, LOWER HORZ	ASTM A36	1
4	SE185-031	PLATE, LOWER VERT	ASTM A36	2
3	SE185-028	PIVOT STRUCTURE	ASTM A36	1
2	SE185-014	BLOCK, PIVOT	ASTM A36	2
1	SE185-006	ASSEMBLY PIVOT AND ROTATION STRUCTURE	--	1

COMPUTER GENERATED DRAWING		CENTRAL FILES:	PRINCETON PLASMA PHYSICS LABORATORY	
MANUAL CHANGES NOT PERMITTED		UNLESS OTHERWISE SPECIFIED	NATIONAL COMPACT STELLARATOR EXPERIMENT	
DO NOT VERIFY INFORMATION BY SCALING DRAWING		DIMENSIONS ARE IN INCHES MACHINE SURFACES BREAK SHARP EDGES .005/.020	FIELD PERIOD ASSEMBLY PIVOT AND ROTATION STRUCTURE	
NEXT ASSEMBLY		TOLERANCES NON-CUMULATIVE	DSN: M. MESSINGO	DRAWING NO:
		DECIMAL-INCH FRACTIONS	CHK:	SE185-006
		.XX ±.000 0°-12° ±.010	ENGR: T. BROWN	SHEET 1 OF 1
		.XXX ±.005 12°-120° ±.010	SUPV:	REV 0
		ANGULAR ±.0°-15° OVER 120° ±.010		

WEIGHT
3236.3 lbs

MODEL NAME
SE185-006

WELDING ENGINEER

RELEASE LEVEL: WIP
 DWG VERSION NO: