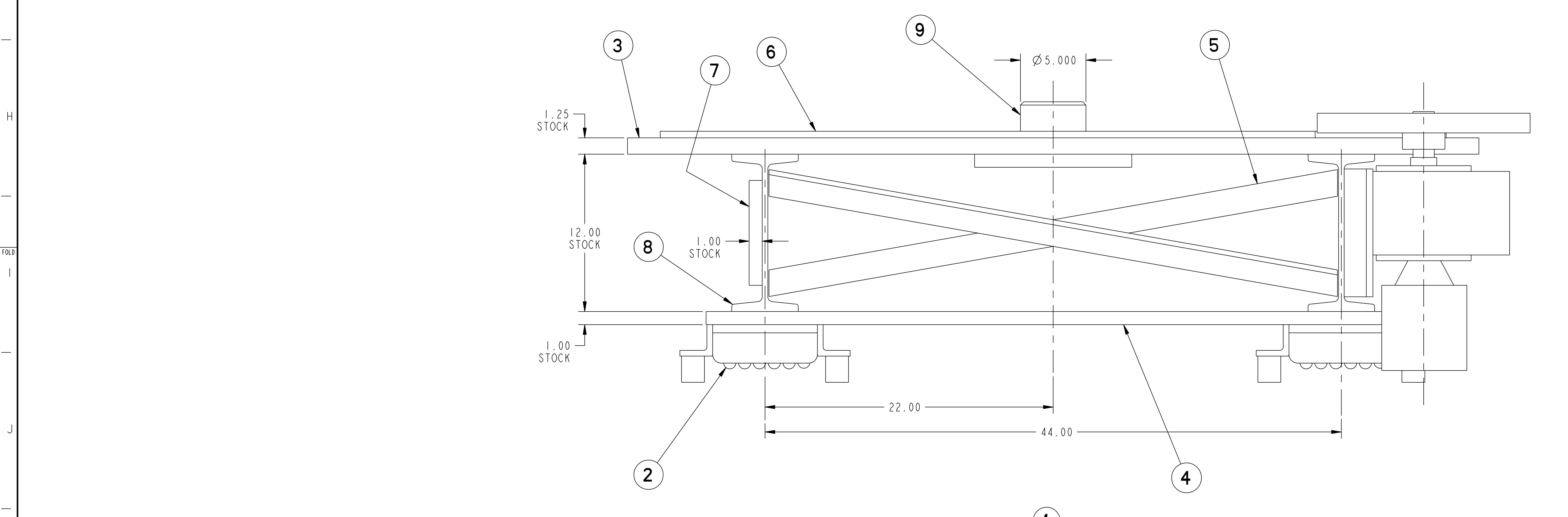
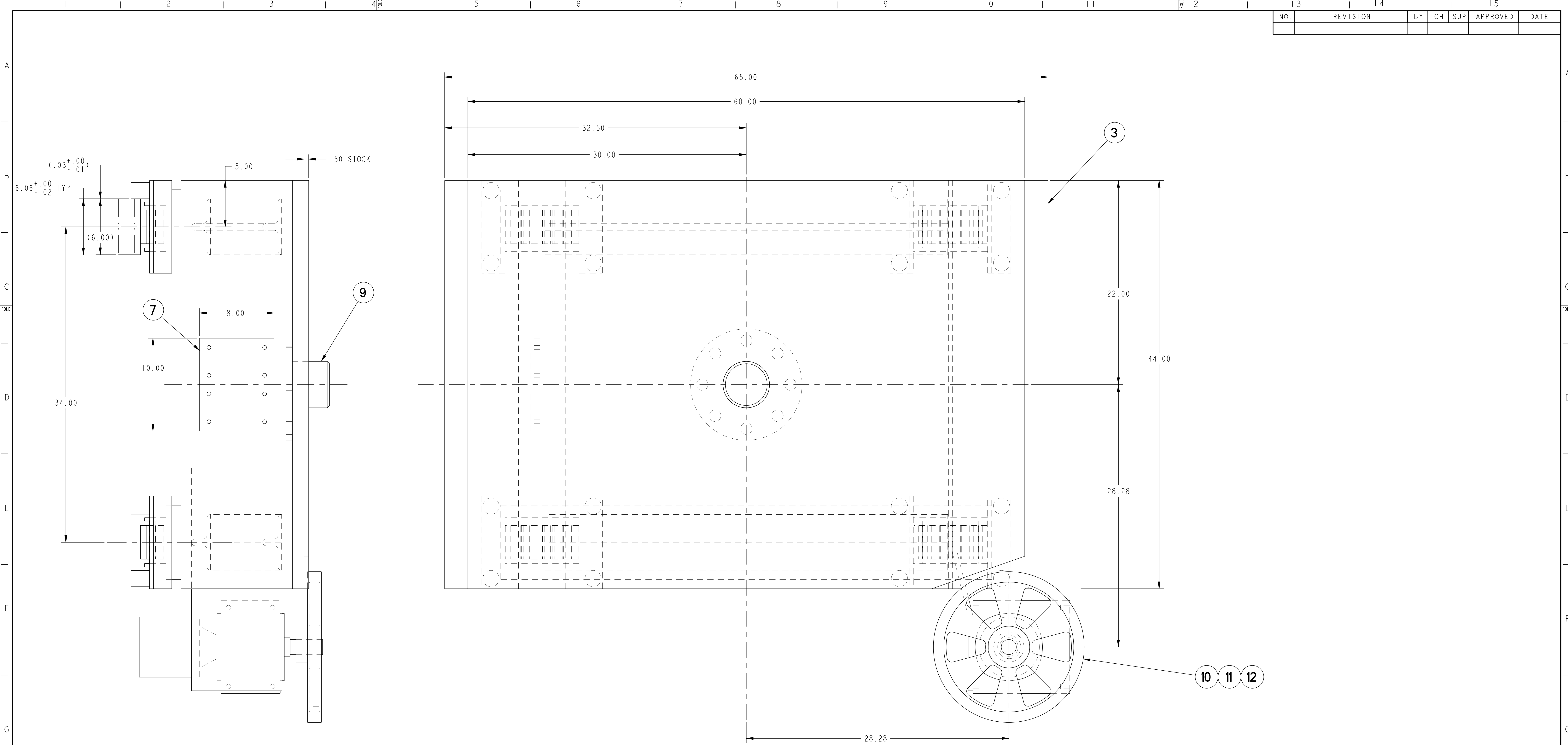


NO.	REVISION	BY	CH	SUP	APPROVED	DATE



PART NO.	DRAWING NO	NOMENCLATURE OR DESCRIPTION	MATERIAL	QTY	RECD
12	SE185-GEAR-TURNTABLE	SPUR GEAR	CAST IRON	1	
11	SE185-053	GEARMOTOR SUPPORT BRACKET	--	1	
10	SE185-051	GEARMOTOR	--	1	
9	SE185-048	TURNTABLE AXLE	ASTM A36	1	
8	SE185-045-2	SUPPORT BEAM - S12 x 35# x 44" LG	ASTM A36	2	
7	SE185-043	PUSH PLATE MOUNTING PAD	ASTM A36	1	
6	SE185-024	BEARING PLATE	ASTM A36	1	
5	SE185-021	ANGLE, 3 x 2	ASTM A36	4	
4	SE185-020	PLATE, ROLLER MOUNTING	ASTM A36	2	
3	SE185-019	TOP PLATE	ASTM A36	1	
2	SE185-011	SLIDER ASSEMBLY	--	4	
1	SE185-007	ASSEMBLY LINEAR TURNTABLE	--	1	

1
ASSEMBLY
SCALE: 0.250
1 REQ'D

WEIGHT
2664.3 lbs

MODEL NAME
SE185-007

WELDING ENGINEER

RELEASE LEVEL: WIP
DWG VERSION NO:

COMPUTER GENERATED DRAWING MANUAL CHANGES NOT PERMITTED Pro E	CENTRAL FILES: UNLESS OTHERWISE SPECIFIED DIMENSIONS ARE IN INCHES MACHINE SURFACES BREAK SHARP EDGES .005/ .020	PRINCETON PLASMA PHYSICS LABORATORY PRINCETON UNIVERSITY NATIONAL COMPACT STELLARATOR EXPERIMENT FIELD PERIOD ASSEMBLY FIELD PERIOD ASSEMBLY FIXTURE LINEAR TURNTABLE STRUCTURE
DO NOT VERIFY INFORMATION BY SCALING DRAWING	TOLERANCES NON-CUMULATIVE DECIMAL-INCH FRACTIONS .XX +/- .000 .XXX +/- .005 ANGULAR +/- .05°	DSN: M. MESSINGO CHK: ENGR: TOM BROWN SUPV:
NEXT ASSEMBLY		DRAWING NO: SE185-007
		SHEET 1 OF 1 REV 0

NCSX-SE185-007