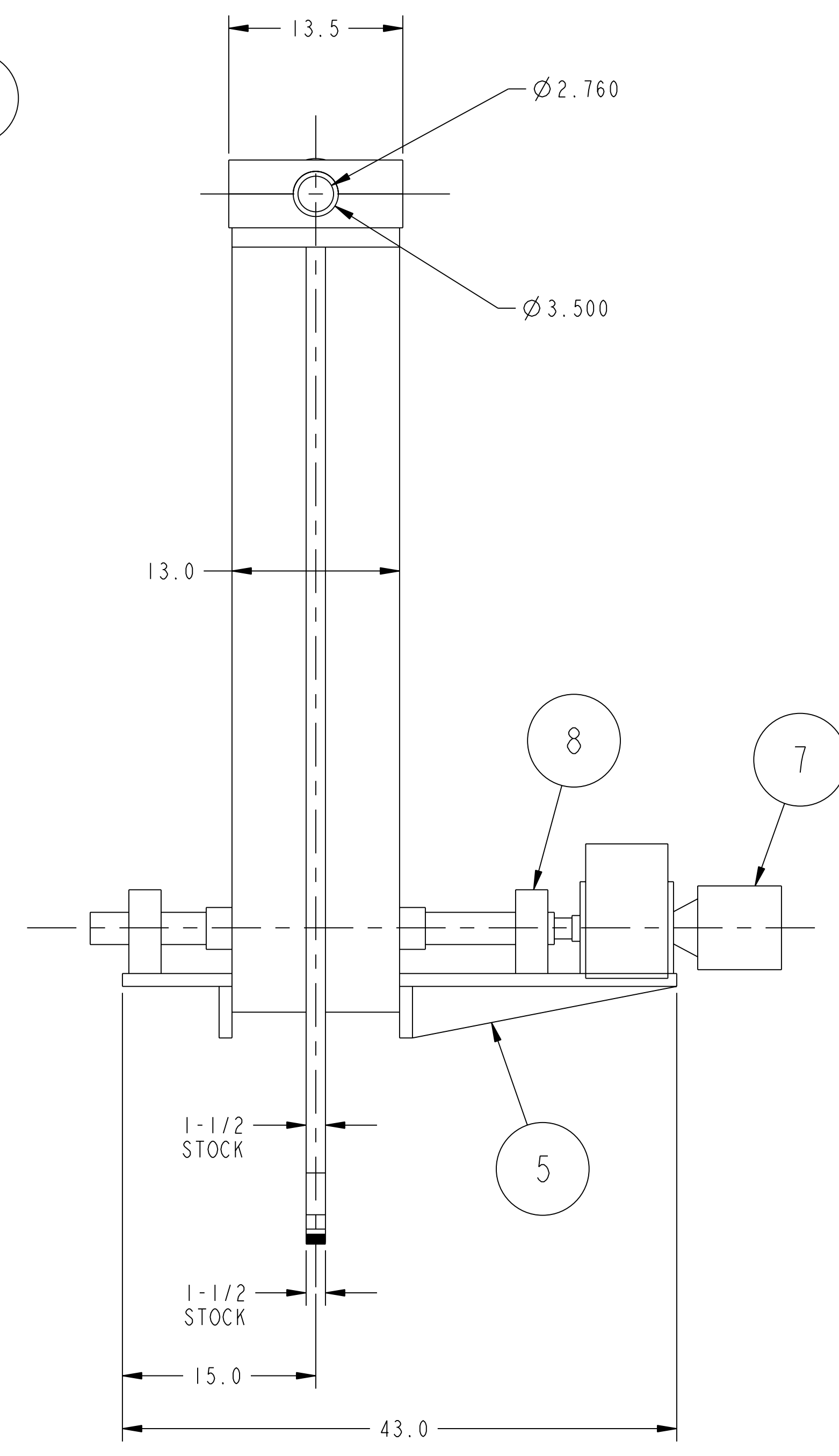
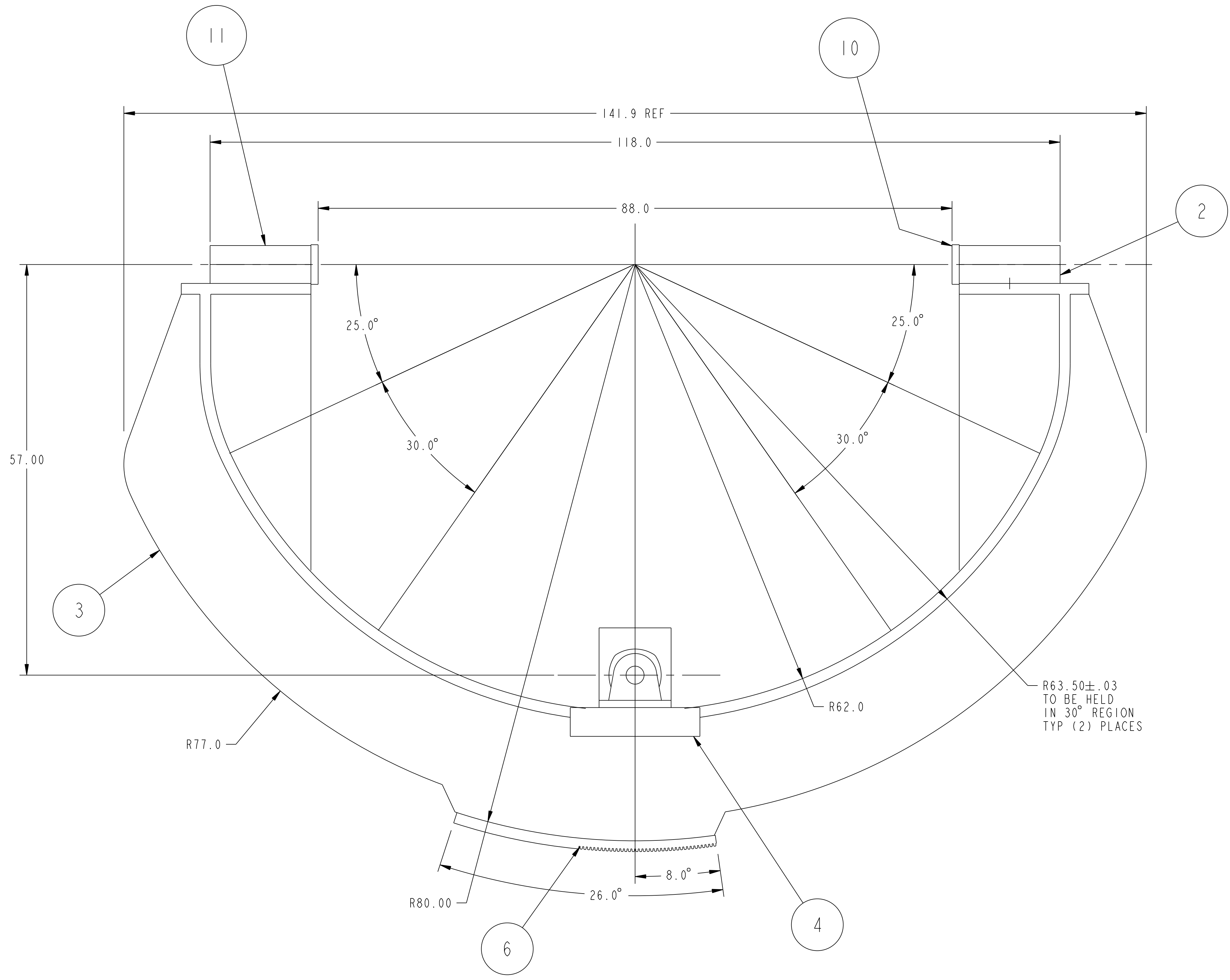
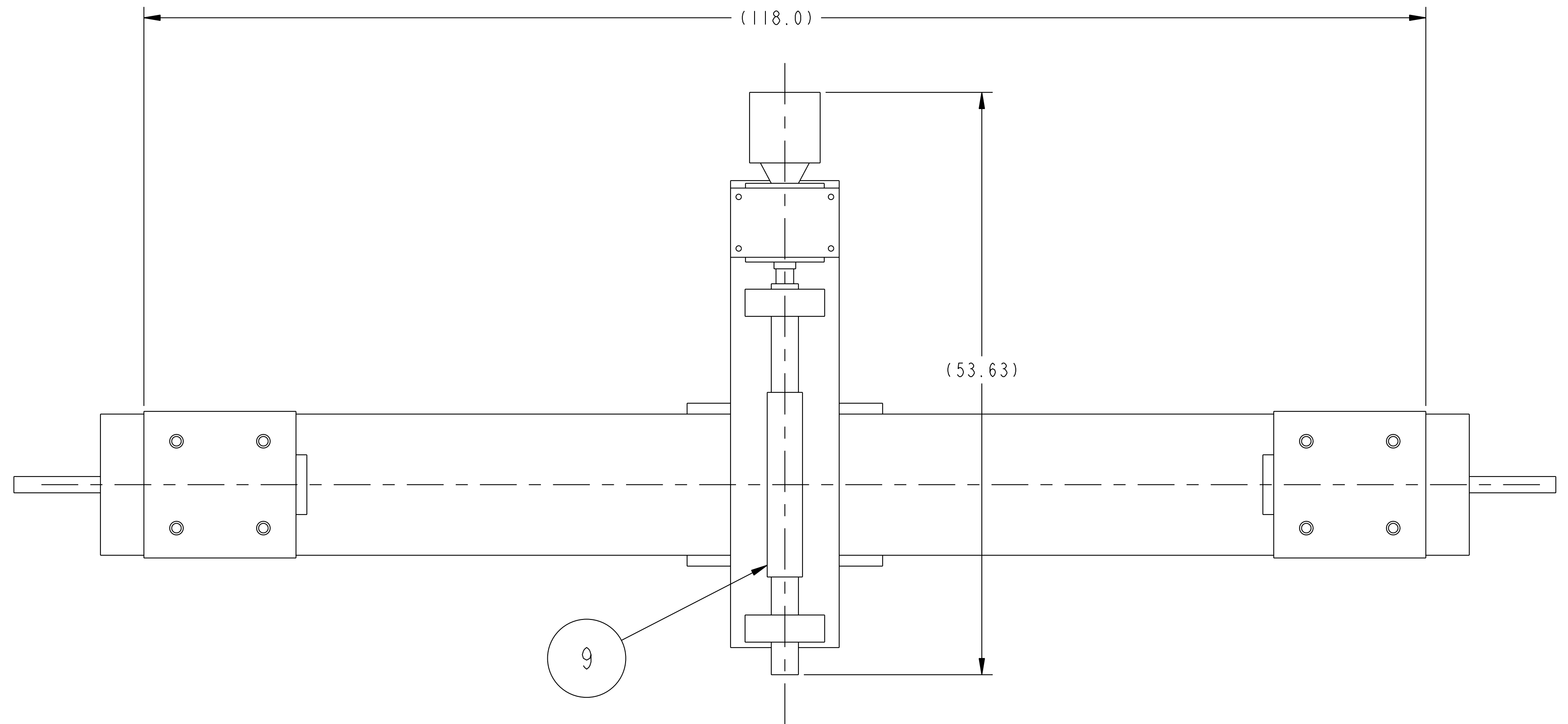


NO.	REVISION	BY	CH	SUP	APPROVED	DATE



**1**  
**ASSEMBLY**  
 SCALE: 0.125  
 1 REQ'D

PART NO.	DRAWING NO	NOMENCLATURE OR DESCRIPTION	MATERIAL	QTY	REQD
11	SE185-014B	BLOCK, PIVOT	STEEL	2	2
10	SE185-065	PIVOT BLOCK PIN	--	--	2
9	SE185-063	GEAR, WORM	--	--	1
8	SE185-052	DRIVE AXLE SUPPORT	ASTM A36	2	2
7	SE185-051	GEARMOTOR	--	--	1
6	SE185-046-1	ROLLED RACK GEAR - 8 PITCH	STEEL	1	1
5	SE185-032	PLATE, LOWER HORIZ	STEEL	1	1
4	SE185-031	PLATE, LOWER VERT	ASTM A36	2	2
3	SE185-028	PIVOT STRUCTURE	ASTM A36	1	1
2	SE185-014	BLOCK, PIVOT	STEEL	2	2
1	SE185-006	ASSEMBLY PIVOT AND ROTATION STRUCTURE	--	--	1

PARTS LIST	
COMPUTER GENERATED DRAWING MANUAL CHANGES NOT PERMITTED Pro E	CENTRAL FILES: UNLESS OTHERWISE SPECIFIED DIMENSIONS ARE IN INCHES MACHINE SURFACES BREAK SHARP EDGES .005/.020
DO NOT VERIFY INFORMATION BY SCALING DRAWING	TOLERANCES NON-CUMULATIVE DECIMAL-INCH FRACTIONS .XX ±.005 .XXX ±.005 ANGULAR ±.0°-15° OVER 120° ±.1°
WEIGHT 3888.2 lbs	MODEL NAME SE185-006
RELEASE LEVEL: WIP DWG VERSION NO:	WELDING ENGINEER
PRINCETON PLASMA PHYSICS LABORATORY NATIONAL COMPACT STELLARATOR EXPERIMENT FIELD PERIOD ASSEMBLY FIELD PERIOD ASSEMBLY FIXTURE PIVOT AND ROTATION STRUCTURE	
DSN: M. MESSINGO CHK: ENGR: T. BROWN SUPV:	
DRAWING NO: <b>SE185-006</b>	
SHEET 1 OF 1 REV 0	

NCSX-SE185-006

K