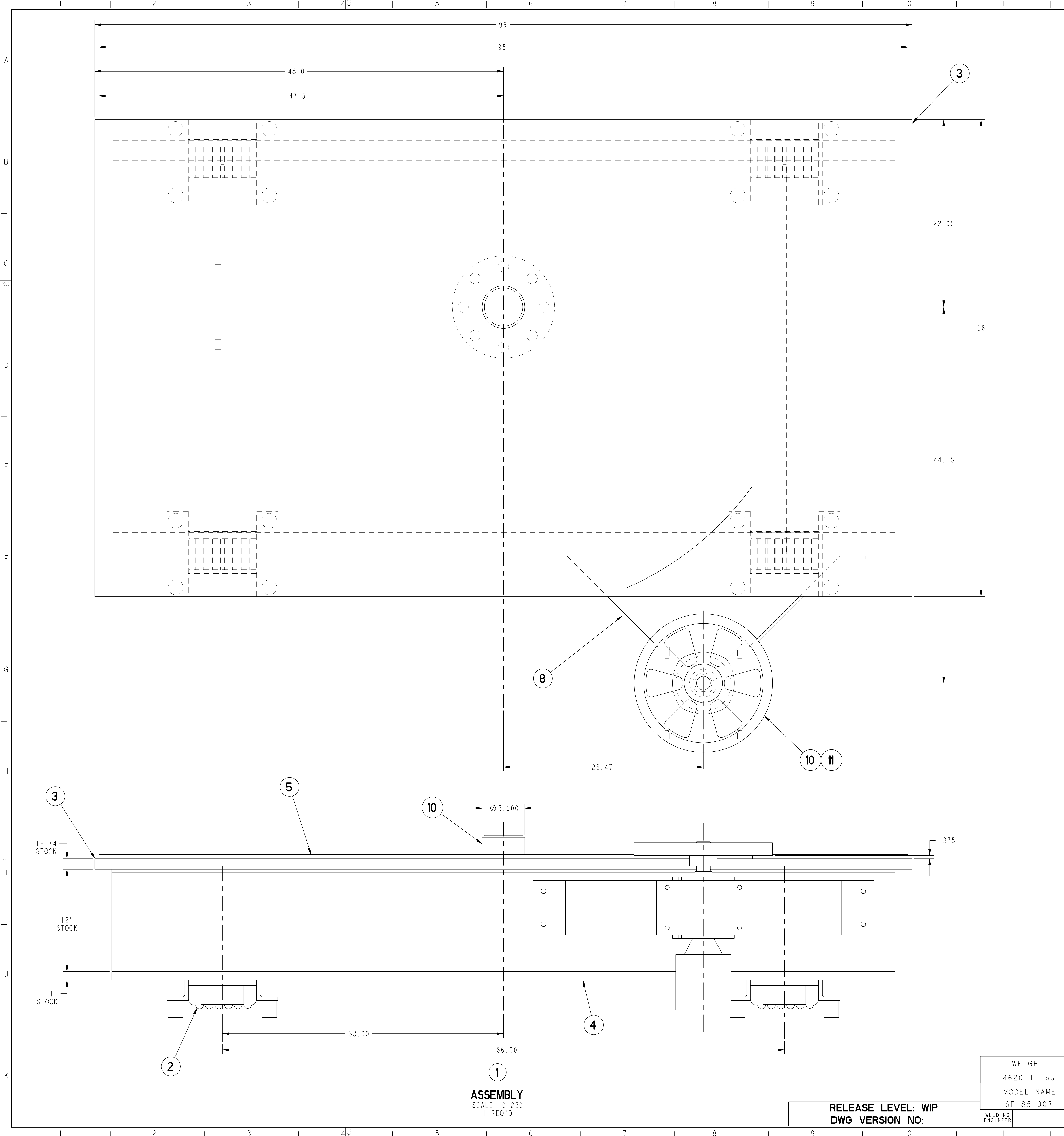


NO.	REVISION	BY	CH	SUP	APPROVED	DATE

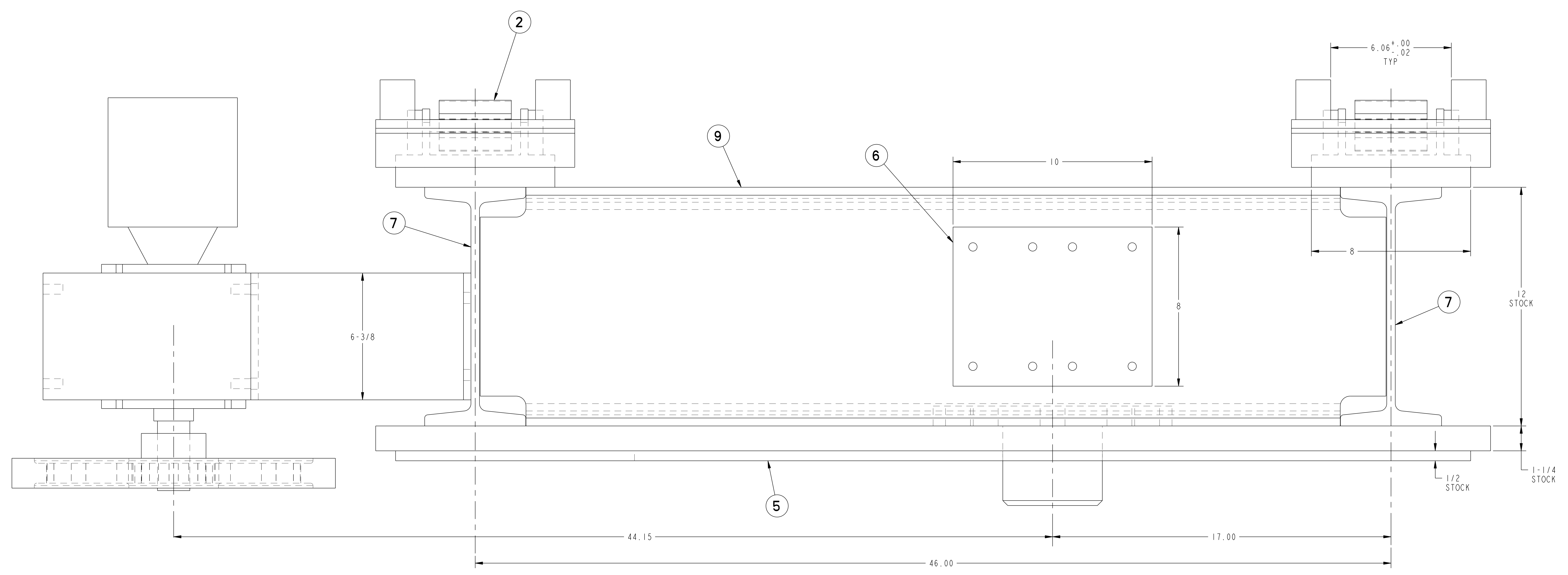


PART NO.	DRAWING NO	NOMENCLATURE OR DESCRIPTION	MATERIAL	QTY	RECD
12	SE185-GEAR-TURNTABLE	SPUR GEAR	CAST IRON	1	
11	SE185-051	GEARMOTOR	--	1	
10	SE185-048	TURNTABLE AXLE	--	1	
9	SE185-045-2	SUPPORT BEAM - S12 x 35# x 44" LG	ASTM A36	2	
8	SE185-045-13	GEARMOTOR SUPPORT BRACKET	ASTM A36	1	
7	SE185-045-12	SUPPORT BEAM - S12 x 35# x 92" LG	ASTM A36	2	
6	SE185-043	PUSH PLATE MOUNTING PAD	ASTM A36	1	
5	SE185-024	BEARING PLATE		1	
4	SE185-020	PLATE, ROLLER MOUNTING	ASTM A36	2	
3	SE185-019	TOP PLATE	ASTM A36	1	
2	SE185-011	SLIDER ASSEMBLY	--	4	
1	SE185-007	LINEAR TURNTABLE STRUCTURE ASSEMBLY	--	1	

COMPUTER GENERATED DRAWING MANUAL CHANGES NOT PERMITTED Pro E		CENTRAL FILES: UNLESS OTHERWISE SPECIFIED	PRINCETON PLASMA PHYSICS LABORATORY PRINCETON UNIVERSITY <b>NATIONAL COMPACT STELLARATOR EXPERIMENT</b>	
DO NOT VERIFY INFORMATION BY SCALING DRAWING		DIMENSIONS ARE IN INCHES MACHINE SURFACES BREAK SHARP EDGES .005/.020	FIELD PERIOD ASSEMBLY FIELD PERIOD ASSEMBLY FIXTURE LINEAR TURNTABLE STRUCTURE ASSEMBLY	
WEIGHT 4620.1 lbs	MODEL NAME SE185-007	TOLERANCES NON-CUMULATIVE DECIMAL-INCH FRACTIONS .XX +/- .000 0"-12" +/- .010 .XXX +/- .005 12"-120" +/- .010 ANGULAR +/- .05 OVER 120" +/- .10	DSN: M. MESSINGO	DRAWING NO: <b>SE185-007</b>
RELEASE LEVEL: WIP DWG VERSION NO:		NEXT ASSEMBLY	CHK: ENGR: TOM BROWN	SHEET 1 OF 2 REV 0

**ASSEMBLY**  
SCALE 0.250  
1 REQ'D

NO.	REVISION	BY	CH	SUP	APPROVED	DATE



FOR NOTES AND BILL OF MATERIAL SEE SHEET 1

RELEASE LEVEL: WIP  
 DWG VERSION NO: 6

WEIGHT  
 4620.1 lbs  
 MODEL NAME  
 SE185-007  
 WELDING  
 ENGINEER

COMPUTER GENERATED DRAWING MANUAL CHANGES NOT PERMITTED Pro E	CENTRAL FILES: UNLESS OTHERWISE SPECIFIED	PRINCETON PLASMA PHYSICS LABORATORY PRINCETON UNIVERSITY	
DO NOT VERIFY INFORMATION OF SCALING DRAWING SCALE 0.500	DIMENSIONS ARE IN INCHES MACHINE SURFACES BREAK SHARP EDGES .005/.020	NATIONAL COMPACT STELLARATOR EXPERIMENT FIELD PERIOD ASSEMBLY FIELD PERIOD ASSEMBLY FIXTURE LINEAR TURNABLE STRUCTURE	
NEXT ASSEMBLY	TOLERANCES NON-CUMULATIVE DECIMAL-INCH FRACTIONS .XX ±.000 0°-120° ±.010 .XXX ±.005 120°-120° ±.010 ANGULAR ±.0°-15° OVER 120° ±.1°	DSN: M. MESSINEO CHK: ENGR. T. BROWN SUPV:	DRAWING NO: <b>SE185-007</b> SHEET 2 OF 2 REV 0

NCSX-SE185-007