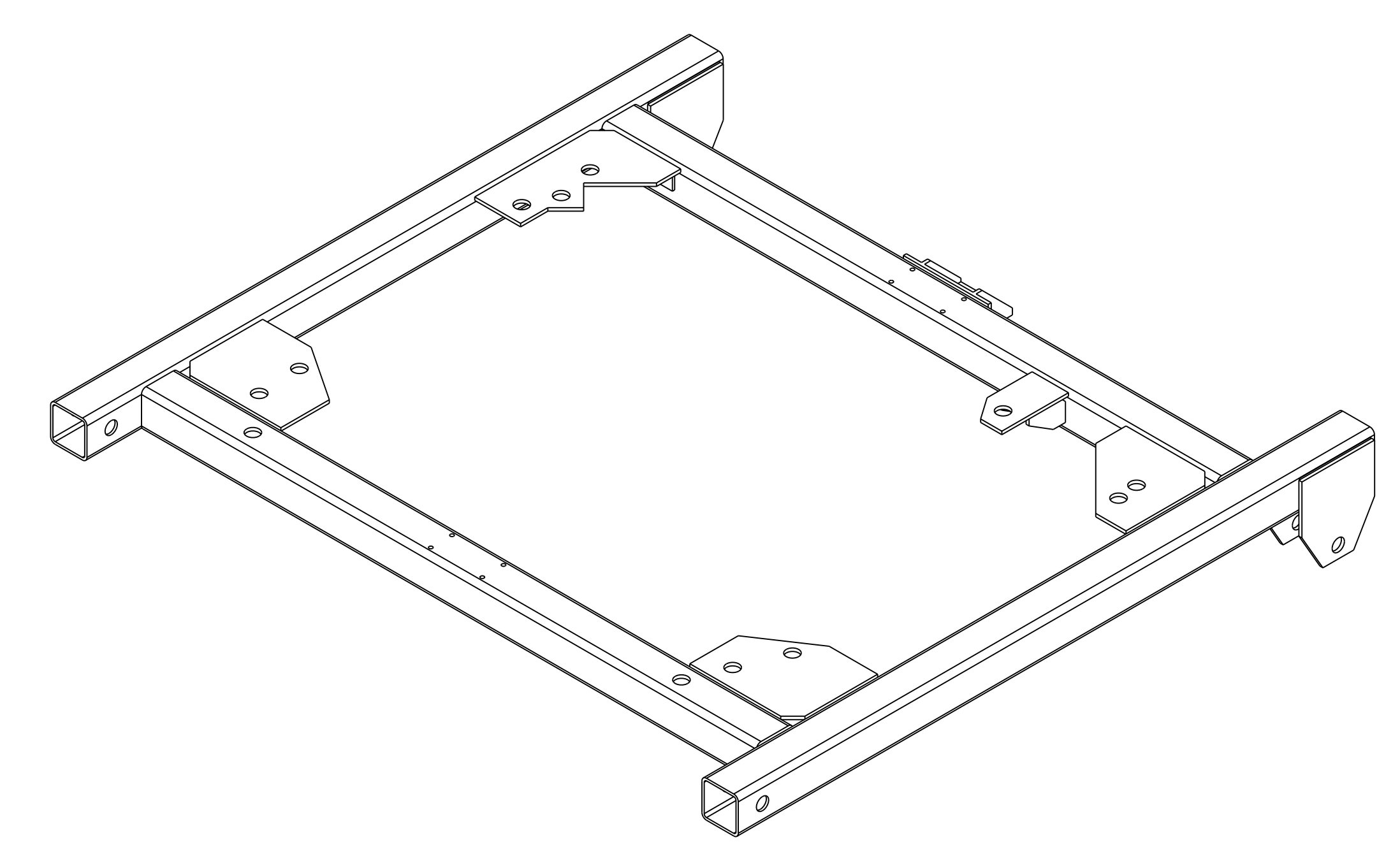
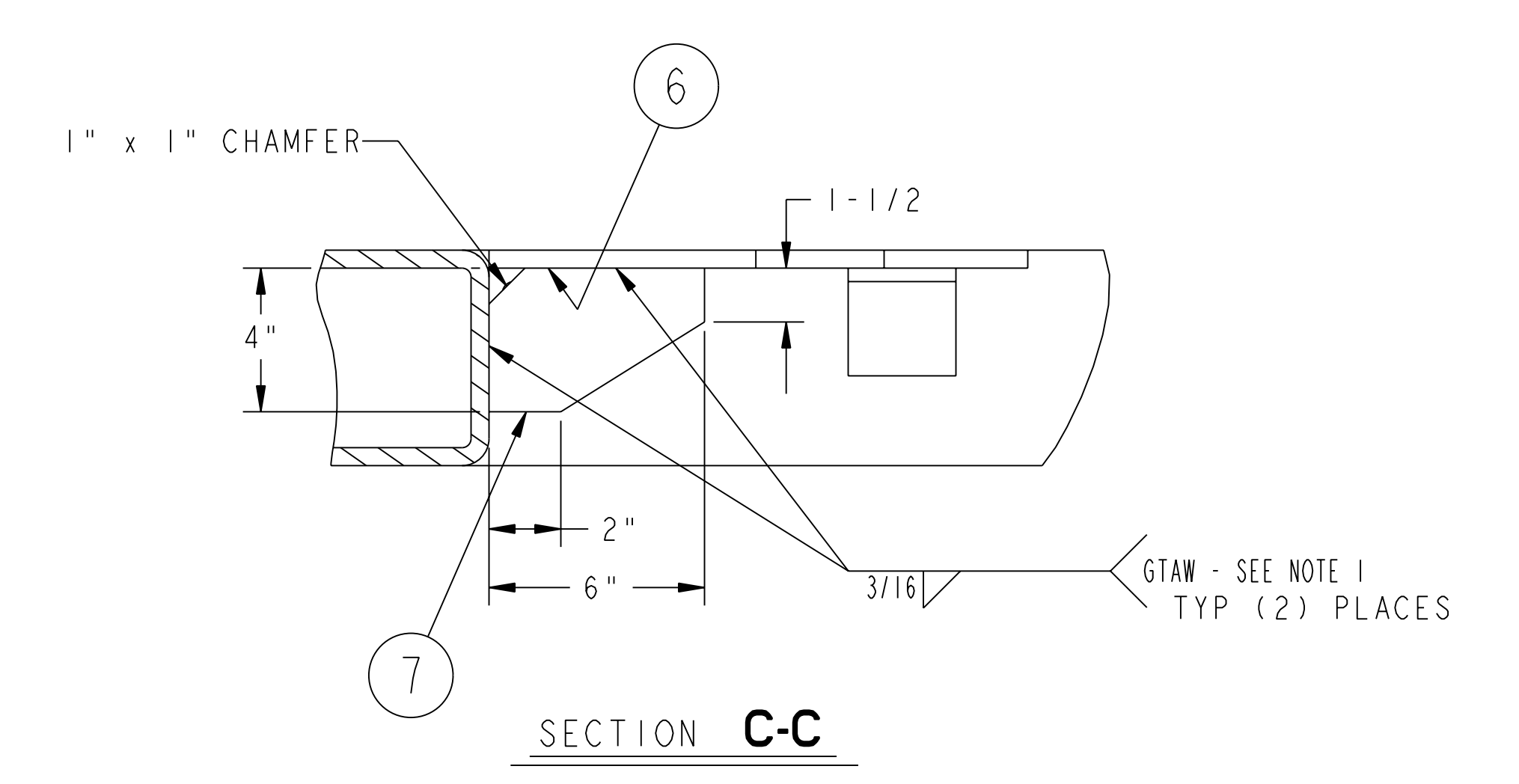
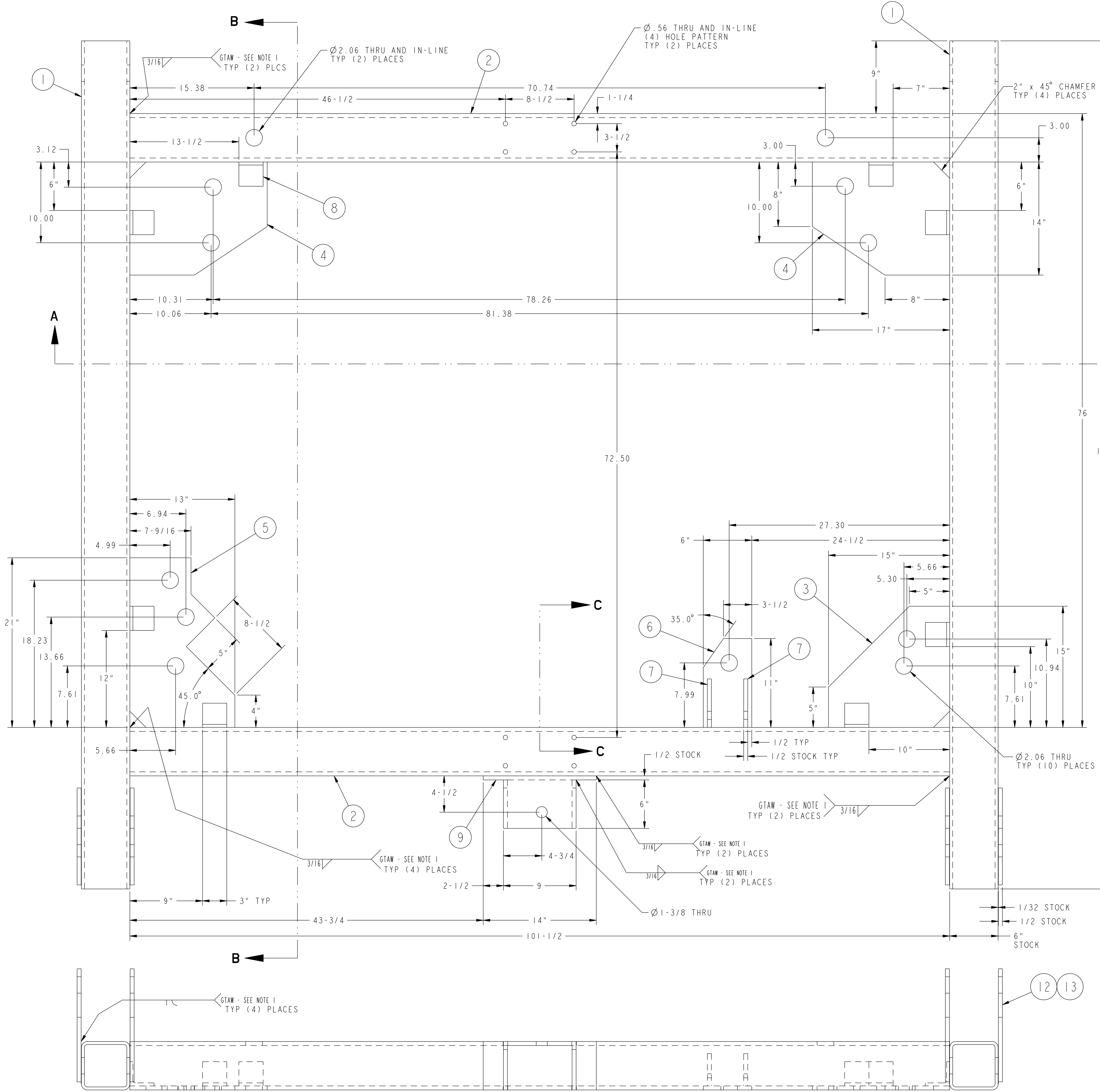


NO.	REVISION	BY	CH	SUP	APPROVED	DATE



RELEASED FOR FABRICATION / INSTALLATION
PPPL Drafting:

- NOTES
- WELDING SHALL BE PERFORMED IN ACCORDANCE WITH THE REQUIREMENTS OF PPPL PROCEDURE ENG-037, VISUAL WELD INSPECTION SHALL BE PERFORMED IN ACCORDANCE WITH THE ACCEPTANCE CRITERIA OF AWS D1.1 Section 6.
 - ALL HOLES TO BE MACHINED AFTER ALL WELDS ARE COMPLETE.

2	15	THIS DWG	MOUNTING PLATE	ASTM A36
1	14	THIS DWG	CROSSMEMBER - 6" SQ x 3/8" WALL STRUCT. TUBE	ASTM A36
4	13	THIS DWG	SANDWICH PLATE	ASTM A36
4	12	THIS DWG	SPACER - 1/32 x 4 1/2 x 13 3/4	ASTM A36
1	11	THIS DWG	PICK-UP MAIN PLATE	ASTM A36
2	10	THIS DWG	PICK-UP SIDE PLATE	ASTM A36
1	9	THIS DWG	PICK-UP BASE PLATE	ASTM A36
8	8	THIS DWG	GUSSET SUPPORT ANGLE - 3" x 3" x 3/8" ANGLE	ASTM A36
2	7	THIS DWG	GUSSET	ASTM A36
1	6	THIS DWG	MOUNTING PLATE	ASTM A36
1	5	THIS DWG	CORNER GUSSET - TYPE "C"	ASTM A36
2	4	THIS DWG	CORNER GUSSET - TYPE "B"	ASTM A36
1	3	THIS DWG	CORNER GUSSET - TYPE "A"	ASTM A36
2	2	THIS DWG	CROSSMEMBER - 6" SQ x 1/2" WALL STRUCT. TUBE	ASTM A36
2	1	THIS DWG	PIVOT LEG - 6" SQ x 3/8" WALL STRUCT. TUBE	ASTM A36
		THIS DWG	FRAME SUPPORT WELDMENT	
		THIS DWG	PIVOT FRAME WELDMENT	

02 ASSY	01 ASSY	PART NO.	DRAWING NO.	NOMENCLATURE OR DESCRIPTION	MATERIAL	QTY REQD

COMPUTER GENERATED DRAWING MANUAL CHANGES NOT PERMITTED Pro E DO NOT VERIFY INFORMATION BY SCALING DRAWING	CENTRAL FILES: UNLESS OTHERWISE SPECIFIED DIMENSIONS ARE IN INCHES MACHINE SURFACES BREAK SHARP EDGES .005/.020	PRINCETON PLASMA PHYSICS LABORATORY PRINCETON UNIVERSITY NATIONAL COMPACT STELLARATOR EXPERIMENT FIELD PERIOD ASSEMBLY MCWF ASSEMBLY FIXTURE PIVOT FRAME WELDMENTS
WEIGHT 1557 lbs	MODEL NAME SE185-113-01	DSN: L. MORRIS 10-3-06 CHK: M. COLE 10-3-06 ENGR: T. BROWN 10-3-06 SUPV: J. SIEGEL 10-3-06
WELDING ENGINEER G. GETTELFINGER 10-3-06	TOLERANCES NON-CUMULATIVE DECIMAL-INCH FRACTIONS .XX ±.000 .XXX ±.005 ANGULAR ±.0°-15°	DRAWING NO: SE185-113 SHEET 1 OF 2 REV 0

RELEASE LEVEL: Fabrication
DWG VERSION NO: 5

01 ASSEMBLY
BOTTOM VIEW

NCSX-SE185-113

