

RELEASED FOR FABRICATION / INSTALLATION
PPPL Drafting:

18 TF COIL ASSEMBLIES REQUIRED
9 ASSEMBLIES REQUIRED WITH LEADS AS SHOWN
SEE SHEET #2 FOR ADDITIONAL LEAD ORIENTATIONS

13	SE131-091	TF COIL FRONT TRANSITION FILLER DETAIL	G-11 CR	1
12	SE131-087	SPACER FILLER BLOCK	G-11 CR	1
11	SE131-084	LEAD LOCKING BLOCK SMALL	G-11 CR	1
10	SE131-079	LEAD SUPPORT BLOCK LOCKING	G-11 CR	1
9	SE131-078	LEAD SUPPORT LOCKING BLOCK TYPE "A"	G-11 CR	1
8	SE131-054	TF COIL LEAD SHORT BENT RIGHT	COPPER C107	1
7	SE131-053	TF COIL LEAD LONG BENT RIGHT	COPPER C107	1
6	SE131-047-R2	TF COIL LEAD LOCKING BLOCK CENTRAL	G-11 CR	1
5	SE131-042	DOWEL PIN 1/2 DIA. X 3" LONG	G-11	5
4	SE131-041	LEAD FILLER	G-11 CR	2
3	SE131-033	FERRULE 7/16 OD X 5/16 ID X 1 1/2 LG	OFHC COPPER	5
2	SE131-032	TF COIL TRANSITION FILLER LEFT/RIGHT	G-11 CR	2
1	SE131-031	TF COIL TRANSITION FILLER CENTER	G-11 CR	1

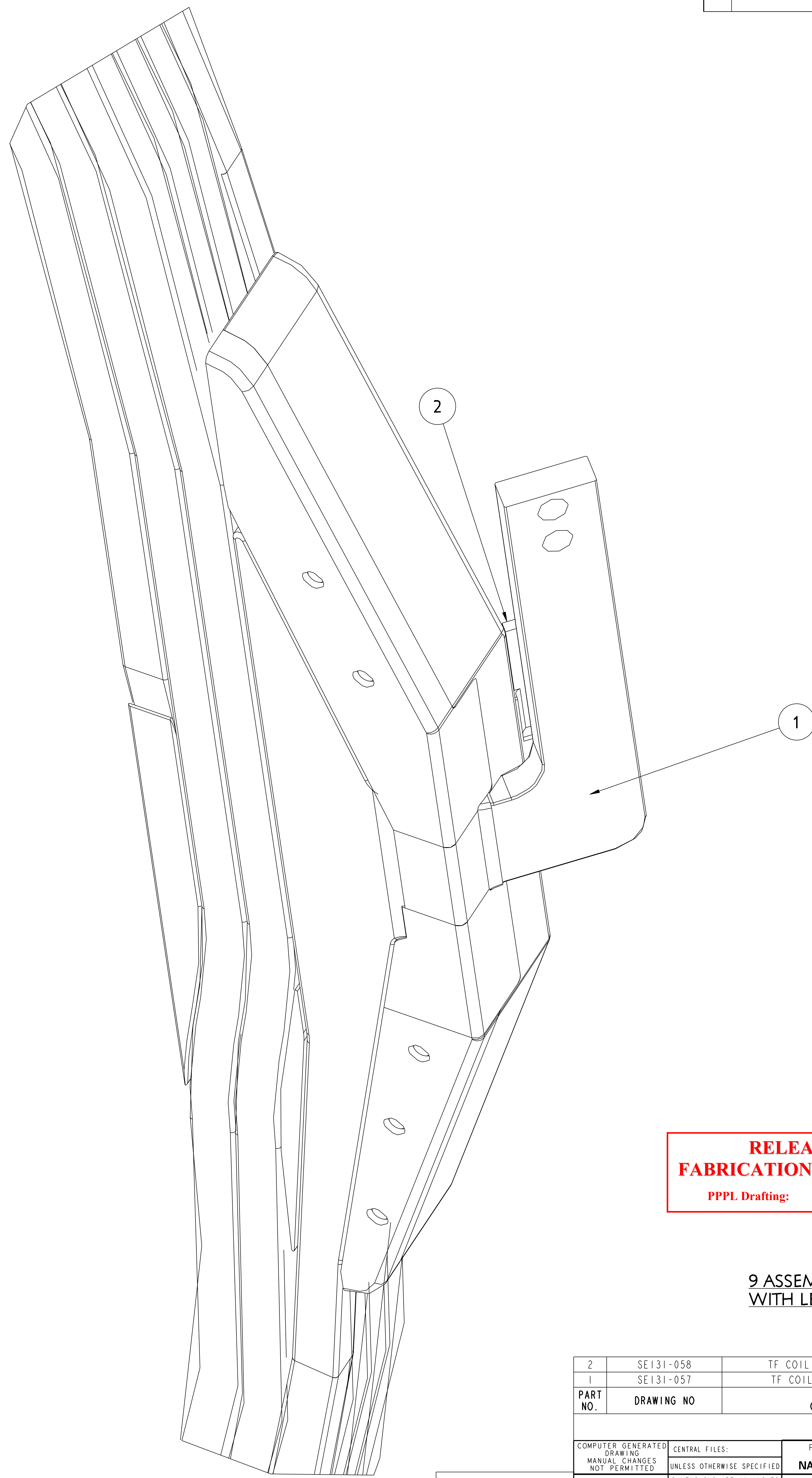
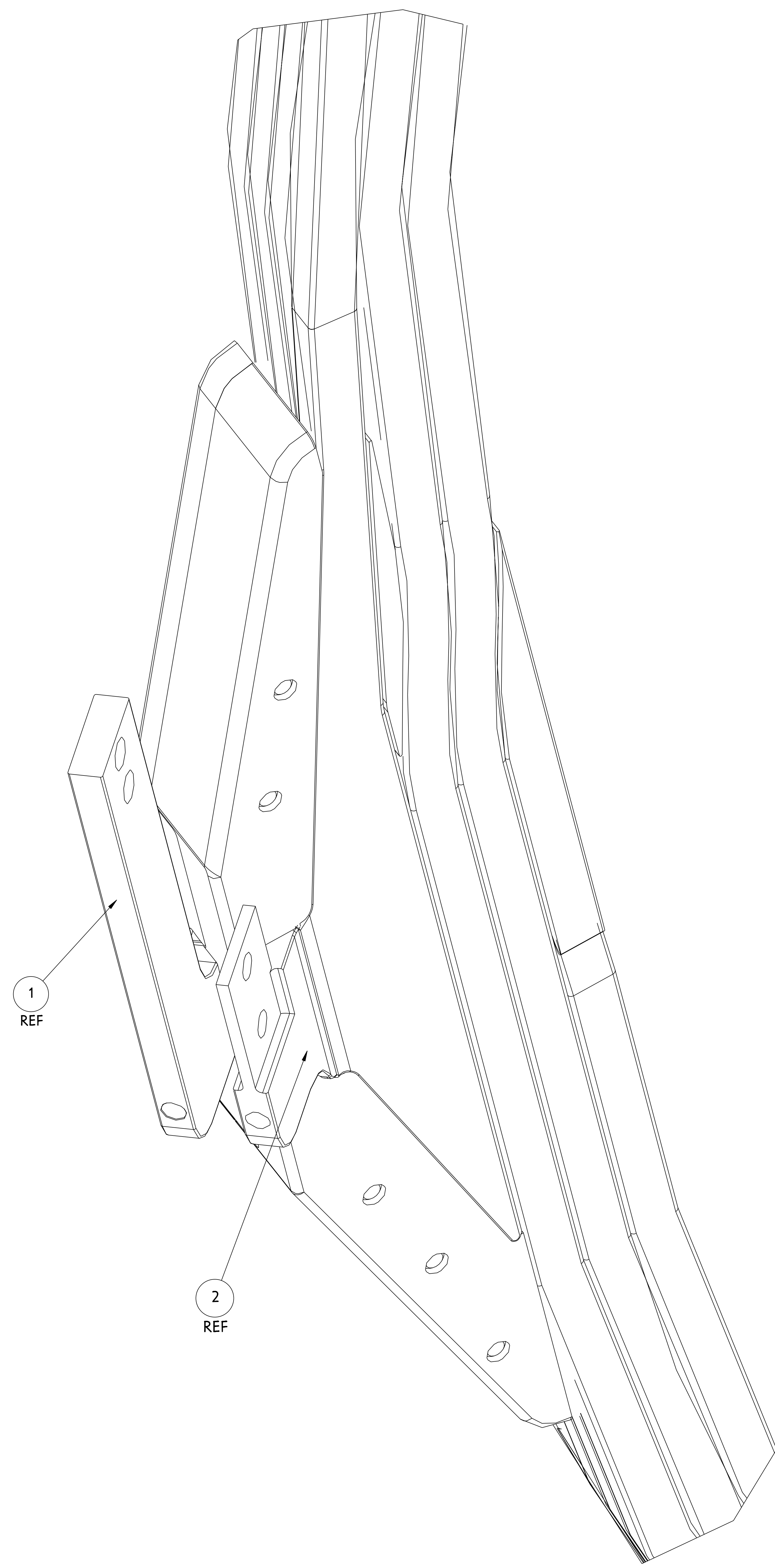
PART NO.	DRAWING NO	NOMENCLATURE OR DESCRIPTION	MATERIAL	QTY	REOD
PARTS LIST					
COMPUTER GENERATED DRAWING		CENTRAL FILES: PRINCETON PLASMA PHYSICS LABORATORY			
DRAWING CHANGES NOT PERMITTED		UNLESS OTHERWISE SPECIFIED: NATIONAL COMPACT STELLARATOR EXPERIMENT			
DO NOT VERIFY INFORMATION BY SCALING DRAWING		DIMENSIONS ARE IN INCHES MACHINE SURFACES UNLESS OTHERWISE SPECIFIED: STELLARATOR CORE CONVENTIONAL COILS			
SCALE 1000		TOLERANCES NON-CUMULATIVE: TF COIL WINDING ASSEMBLY/DETAILS			
NEXT ASSEMBLY		DECIMAL-INCH FRACTIONS: .XX ±.005 12°-120° ±.124 ANGULAR ±.0°-15° OVER 120° ±.124		DSN: J. RUSHINSKI 8/12/05 DRAWING NO: SE131-035	
WEIGHT 1054.7 lbs		ENGR: M. KALISH 8/12/05		SHEET 1 OF 6	
MODEL NAME SE131-035		SUPV: J. SIEGEL 8/12/05		REV 0	

RELEASE LEVEL: Fabrication
DWG VERSION NO:

WELDING ENGINEER

NCSX-SE131-035

NO.	REVISION	BY	CH	SUP	APPROVED	DATE



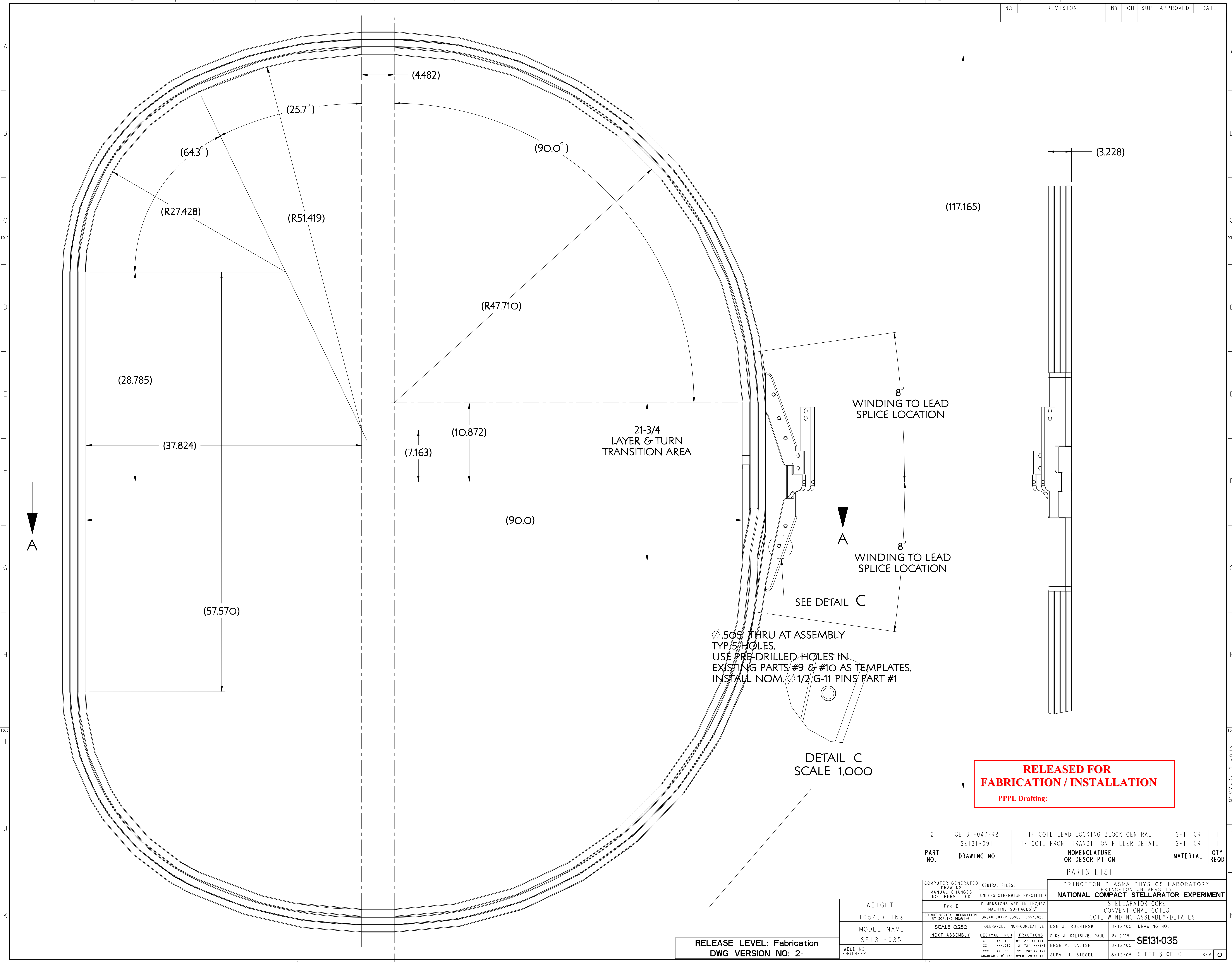
**RELEASED FOR
FABRICATION / INSTALLATION**
PPPL Drafting:

**9 ASSEMBLIES REQUIRED
WITH LEADS AS SHOWN**

2	SE131-058	TF COIL LEAD SHORT BENT LEFT	COPPER C-107	1
1	SE131-057	TF COIL LEAD LONG BENT LEFT	COPPER C-107	1
PART NO.	DRAWING NO	NOMENCLATURE OR DESCRIPTION	MATERIAL	QTY REOD
PARTS LIST				
COMPUTER GENERATED DRAWING MANUAL CHANGES NOT PERMITTED Pro E	CENTRAL FILES: UNLESS OTHERWISE SPECIFIED	PRINCETON PLASMA PHYSICS LABORATORY PRINCETON UNIVERSITY NATIONAL COMPACT STELLARATOR EXPERIMENT		
DO NOT VERIFY INFORMATION BY SCALING DRAWING	DIMENSIONS ARE IN INCHES MACHINE SURFACES BREAK SHARP EDGES .005/.020	STELLARATOR CORE CONVENTIONAL COILS TF COIL WINDING ASSEMBLY/DETAILS		
WEIGHT 1054.7 lbs	SCALE 1000	TOLERANCES NON-CUMULATIVE	DSN: J. RUSHINSKI 8/12/05	DRAWING NO:
MODEL NAME SE131-035	NEXT ASSEMBLY	DECIMAL-INCH FRACTIONS .X +/- .000 0°-120° +/- .010 .XX +/- .005 12°-120° +/- .010 .XXX +/- .005 72°-120° +/- .010 ANGULAR +/- .0°-15° OVER 120° +/- .1°	ENGR: M. KALISH 8/12/05	SE131-035
RELEASE LEVEL: Fabrication DWG VERSION NO: 2	WELDING ENGINEER	SUPV: J. SIEGEL 8/12/05	SHEET 2 OF 6	REV 0

NCSX-SE131-035

NO.	REVISION	BY	CH	SUP	APPROVED	DATE



RELEASE LEVEL: Fabrication
 DWG VERSION NO: 2

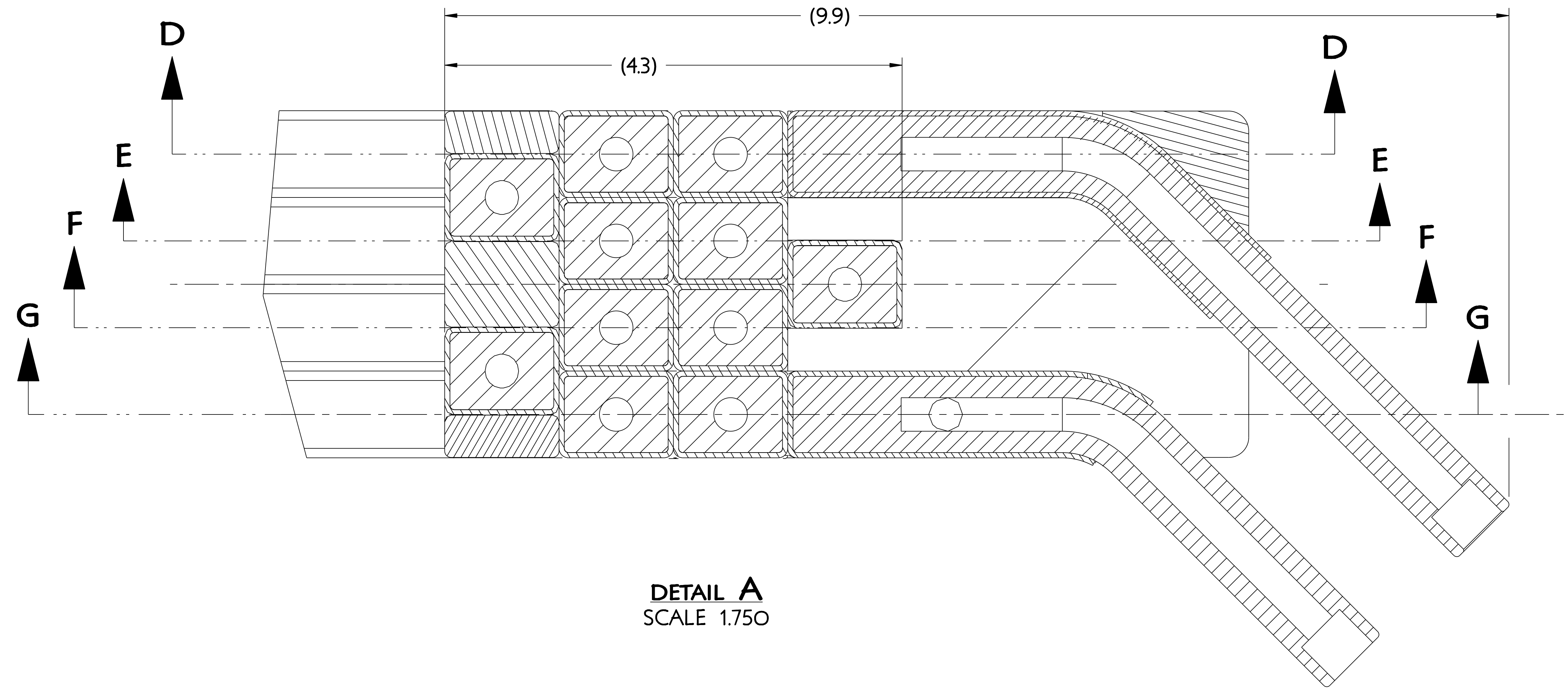
WEIGHT
 1054.7 lbs
 MODEL NAME
 SE131-035
 WELDING
 ENGINEER

2	SE131-047-R2	TF COIL LEAD LOCKING BLOCK CENTRAL	G-11 CR	1
1	SE131-091	TF COIL FRONT TRANSITION FILLER DETAIL	G-11 CR	1
PART NO.	DRAWING NO	NOMENCLATURE OR DESCRIPTION	MATERIAL	QTY RECD
PARTS LIST				
COMPUTER GENERATED DRAWING MANUAL CHANGES NOT PERMITTED		CENTRAL FILES: UNLESS OTHERWISE SPECIFIED	PRINCETON PLASMA PHYSICS LABORATORY PRINCETON UNIVERSITY NATIONAL COMPACT STELLARATOR EXPERIMENT	
DO NOT VERIFY INFORMATION BY SCALING DRAWING		TOLERANCES NON-CUMULATIVE DECIMAL-INCH FRACTIONS XX ±.000 12°-12' ±.118 XXX ±.005 12°-120' ±.114 ANGULAR ±.0°-15' OVER 120° ±.112	STELLARATOR CORE CONVENTIONAL COILS TF COIL WINDING ASSEMBLY/DETAILS DSN: J. RUSHINSKI 8/12/05 DRAWING NO: CHK: M. KALISH/B. PAUL 8/12/05 SE131-035 ENGR: M. KALISH 8/12/05 SUPV: J. SIEGEL 8/12/05 SHEET 3 OF 6 REV 0	

**RELEASED FOR
 FABRICATION / INSTALLATION**
 PPPL Drafting:

NCSX-SE131-035

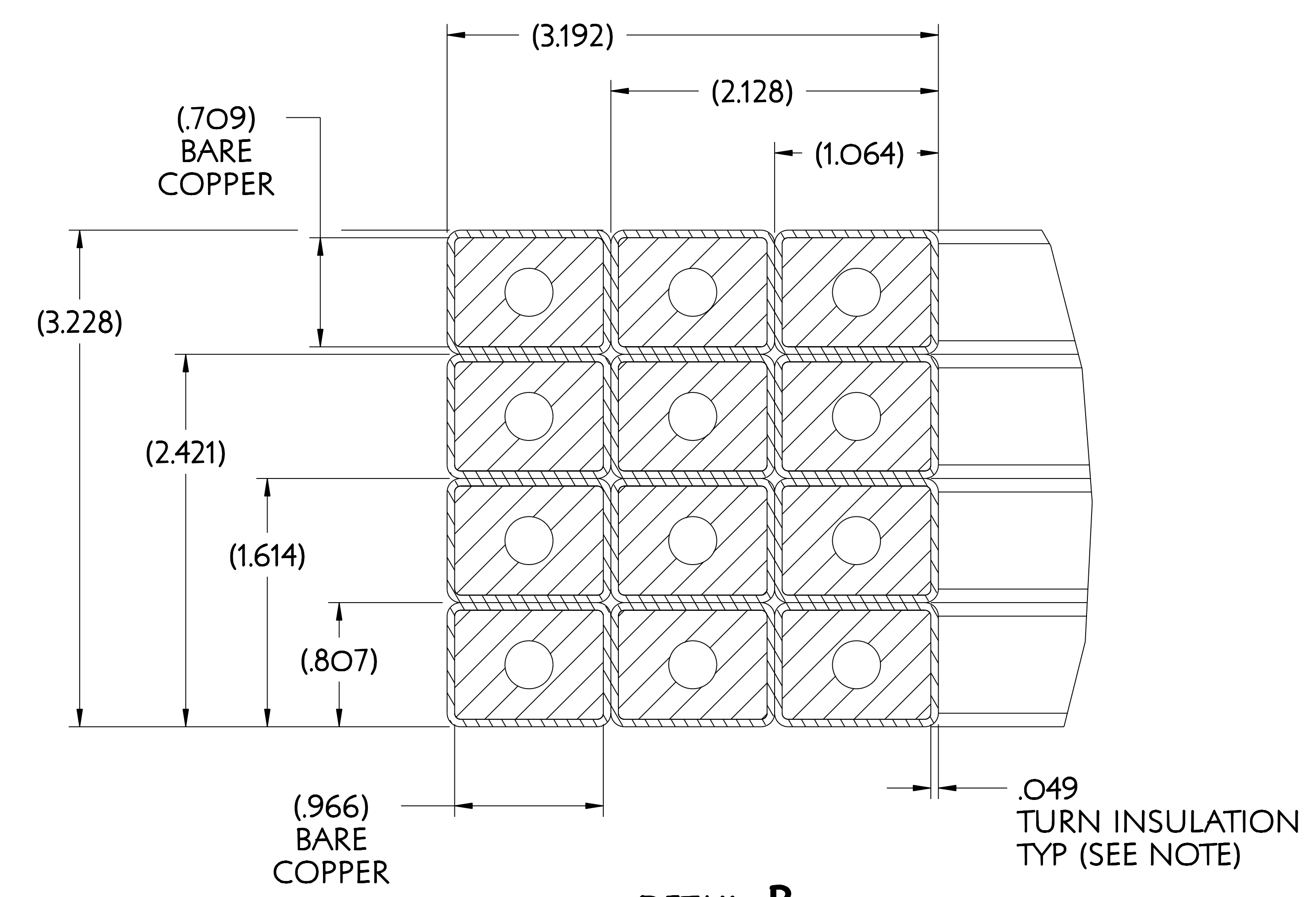
NO.	REVISION	BY	CH	SUP	APPROVED	DATE



DETAIL A
SCALE 1.750



SECTION A-A
SCALE 0.375



DETAIL B
SCALE 1.750

NOTE
TURN INSULATION (APPROX .049" THICK)
2 LAYERS (1/2 LAPPED) KAPTON/ADHESIVE TAPE
6 LAYERS (1/2 LAPPED) GLASS TAPE

**RELEASED FOR
FABRICATION / INSTALLATION**
PPPL Drafting:

2	SE131-047-R2	TF COIL LEAD LOCKING BLOCK CENTRAL	G-II CR	I
1	SE131-091	TF COIL FRONT TRANSITION FILLER DETAIL	G-II CR	I
PART NO.	DRAWING NO	NOMENCLATURE OR DESCRIPTION	MATERIAL	QTY REOD
PARTS LIST				
COMPUTER GENERATED DRAWING CHANGES NOT PERMITTED	CENTRAL FILES:	PRINCETON PLASMA PHYSICS LABORATORY		
Pro E	UNLESS OTHERWISE SPECIFIED	NATIONAL COMPACT STELLARATOR EXPERIMENT		
DO NOT VERIFY INFORMATION BY SCALING DRAWING	DIMENSIONS ARE IN INCHES MACHINE SURFACES	STELLARATOR CORE CONVENTIONAL COILS		
	BREAK SHARP EDGES .005/.020	TF COIL WINDING ASSEMBLY/DETAILS		
	TOLERANCES NON-CUMULATIVE	DSN: J. RUSHINSKI	8/12/05	DRAWING NO:
	DECIMAL-INCH FRACTIONS	CHK: M. KALISH/B. PAUL	8/12/05	SE131-035
	.XX +/- .000 0°-120° +/- 15'	ENG: M. KALISH	8/12/05	
	.XXX +/- .005 120°-120° +/- 15'	SUPV: J. SIEGEL	8/12/05	SHEET 4 OF 6
	ANGULAR +/- 0°-15'			REV 0

RELEASE LEVEL: Fabrication
DWG VERSION NO: 2

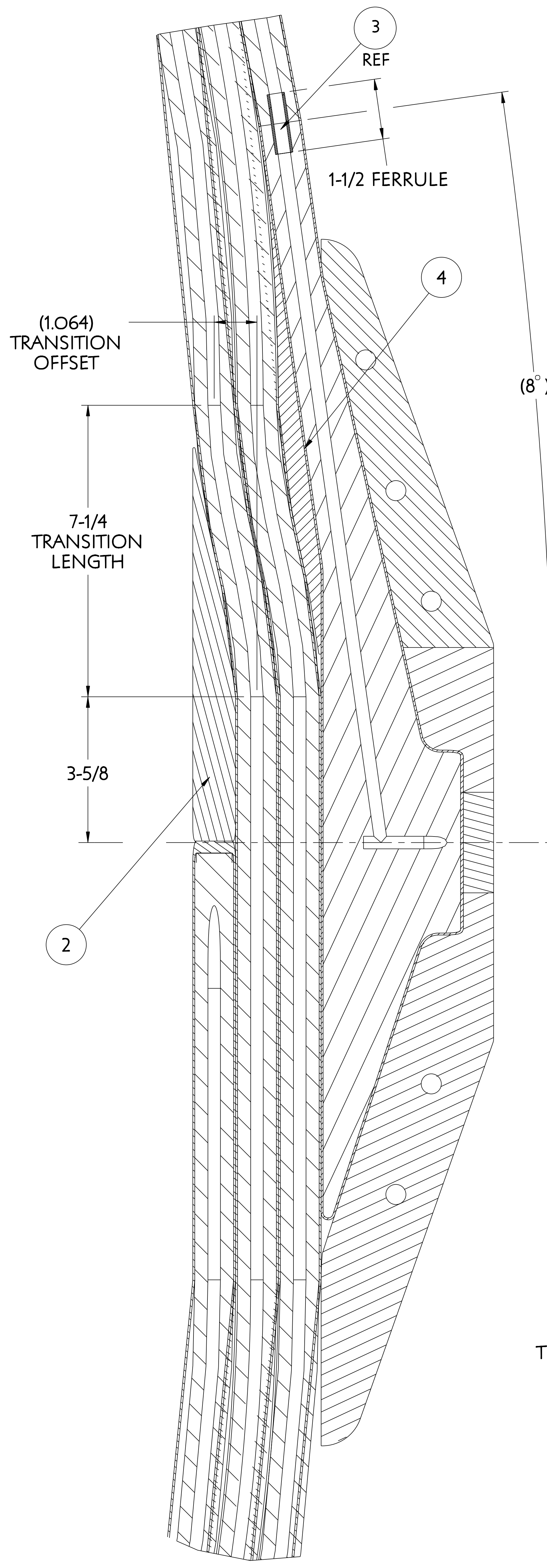
WEIGHT
1054.7 lbs

MODEL NAME
SE131-035

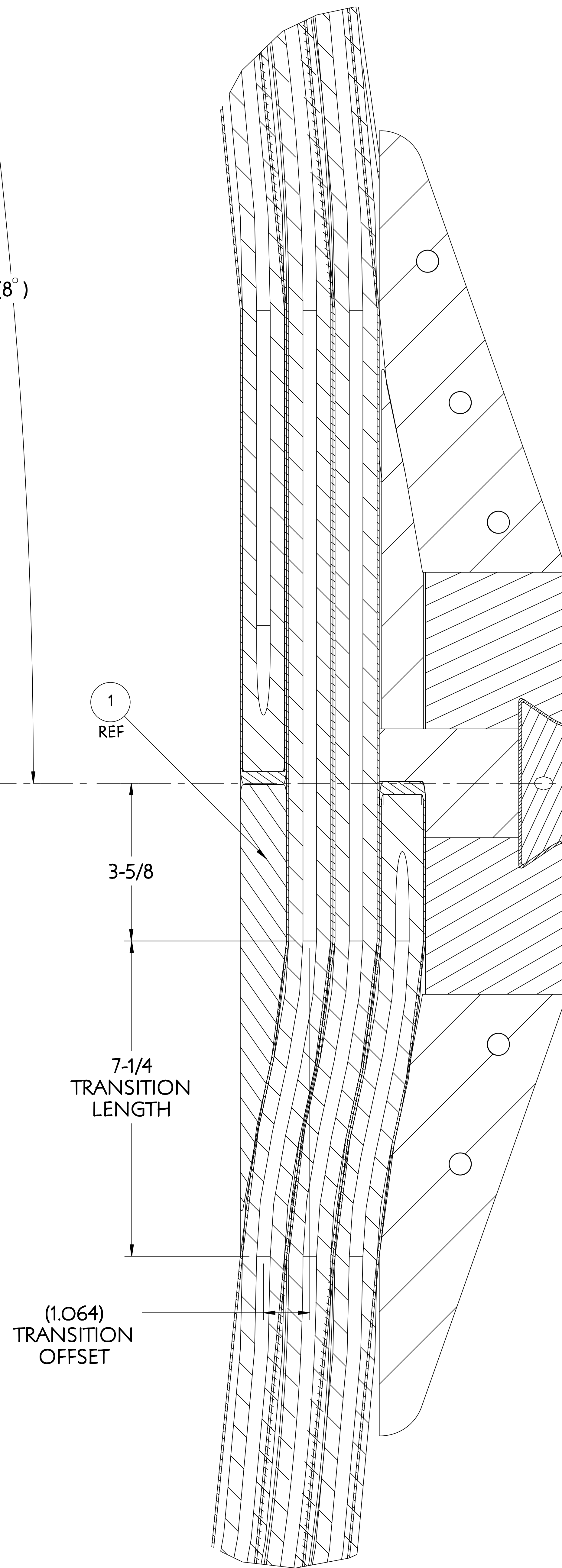
WELDING ENGINEER

NCSX-SE131-035

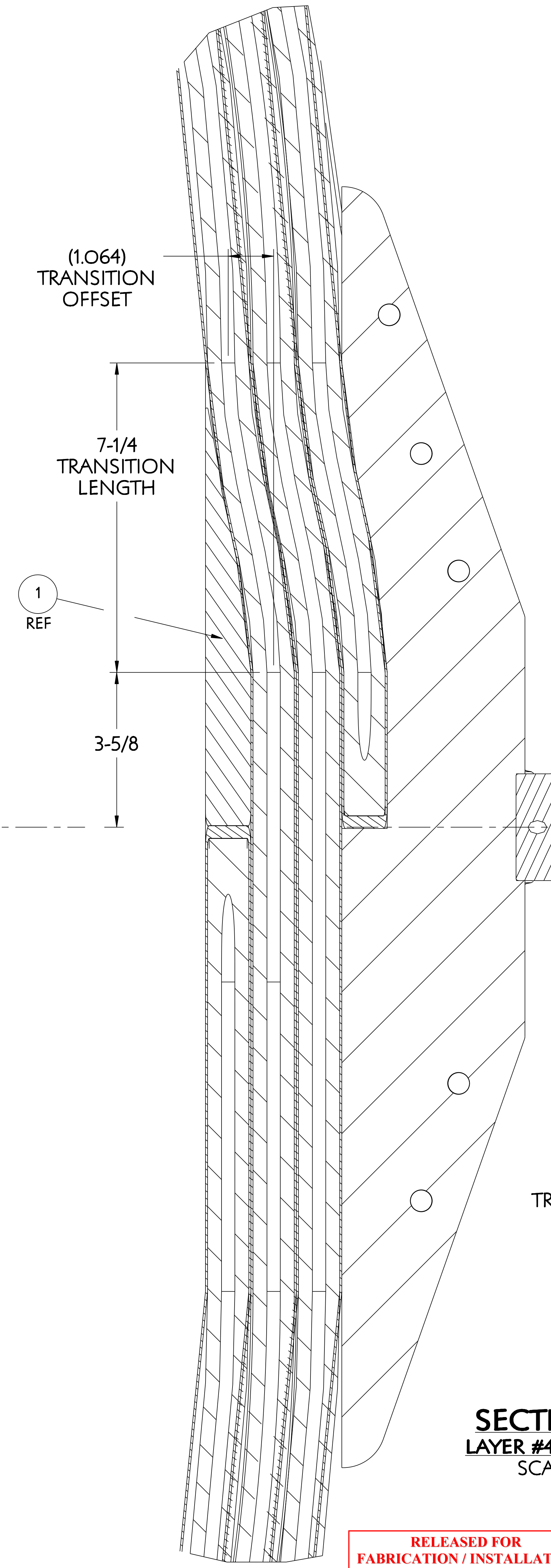
NO.	REVISION	BY	CH	SUP	APPROVED	DATE



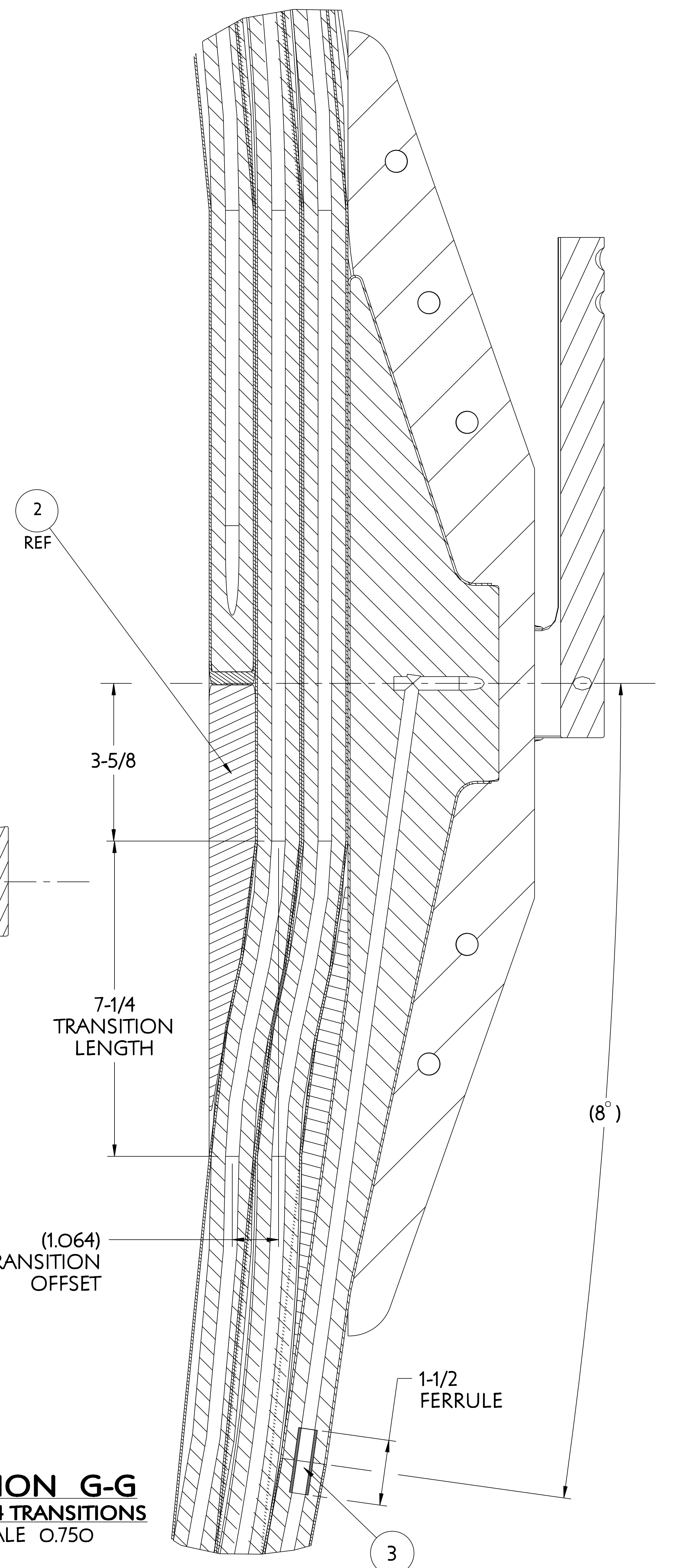
SECTION D-D
LAYER #1 TURN TRANSITIONS
SCALE 0.750



SECTION E-E
LAYER #2 TURN TRANSITIONS
SCALE 0.750



SECTION F-F
LAYER #3 TRANSITIONS
SCALE 0.750



SECTION G-G
LAYER #4 TRANSITIONS
SCALE 0.750

RELEASED FOR FABRICATION / INSTALLATION
 PPPL Drafting

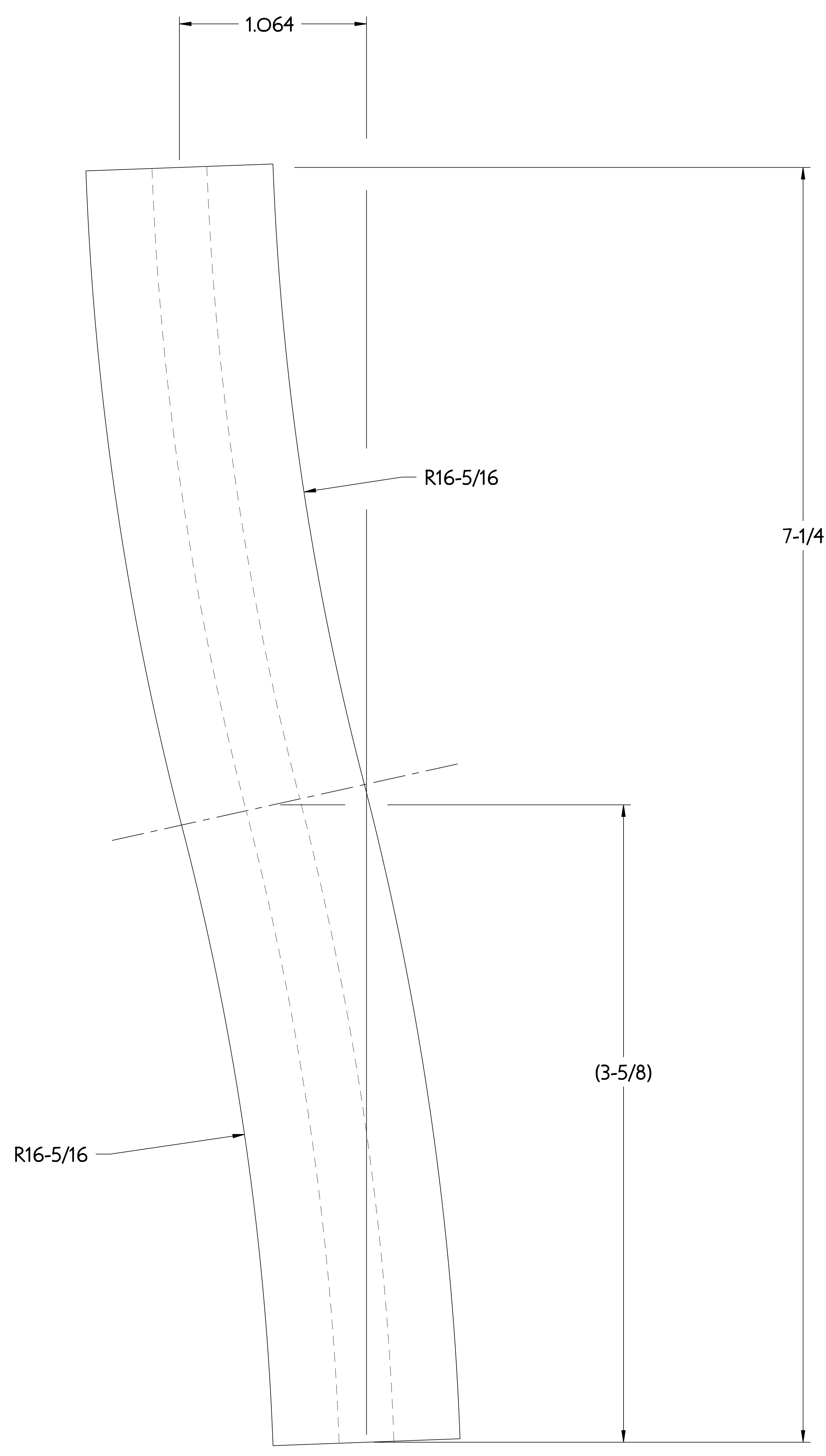
PART NO.	DRAWING NO	NOMENCLATURE OR DESCRIPTION	MATERIAL	QTY	REOD
2	SE131-047-R2	TF COIL LEAD LOCKING BLOCK CENTRAL	G-11 CR	1	
1	SE131-091	TF COIL FRONT TRANSITION FILLER DETAIL	G-11 CR	1	
PARTS LIST					
COMPUTER GENERATED DRAWING		CENTRAL FILES: PRINCETON PLASMA PHYSICS LABORATORY			
MANUAL CHANGES NOT PERMITTED		UNLESS OTHERWISE SPECIFIED: NATIONAL COMPACT STELLARATOR EXPERIMENT			
PRO E		DIMENSIONS ARE IN INCHES MACHINE SURFACES			
DO NOT VERIFY INFORMATION BY SCALING DRAWING		BREAK SHARP EDGES .005/.020			
NEXT ASSEMBLY		TOLERANCES NON-CUMULATIVE		DSN: J. RUSHINSKI 8/12/05 DRAWING NO:	
		DECIMAL-INCH FRACTIONS		CHK: M. KALISH/B. PAUL 8/12/05	
		.XX +/- .030 12"-12" +/- .1/8		ENGR: M. KALISH 8/12/05	
		.XXX +/- .005 12"-120" +/- .1/4		SUPV: J. SIEGEL 8/12/05	
		ANGULAR +/- .0°-15'		OVER 120° +/- .1/2	
				SE131-035	
				SHEET 5 OF 6	
				REV 0	

RELEASE LEVEL: Fabrication
DWG VERSION NO: 2

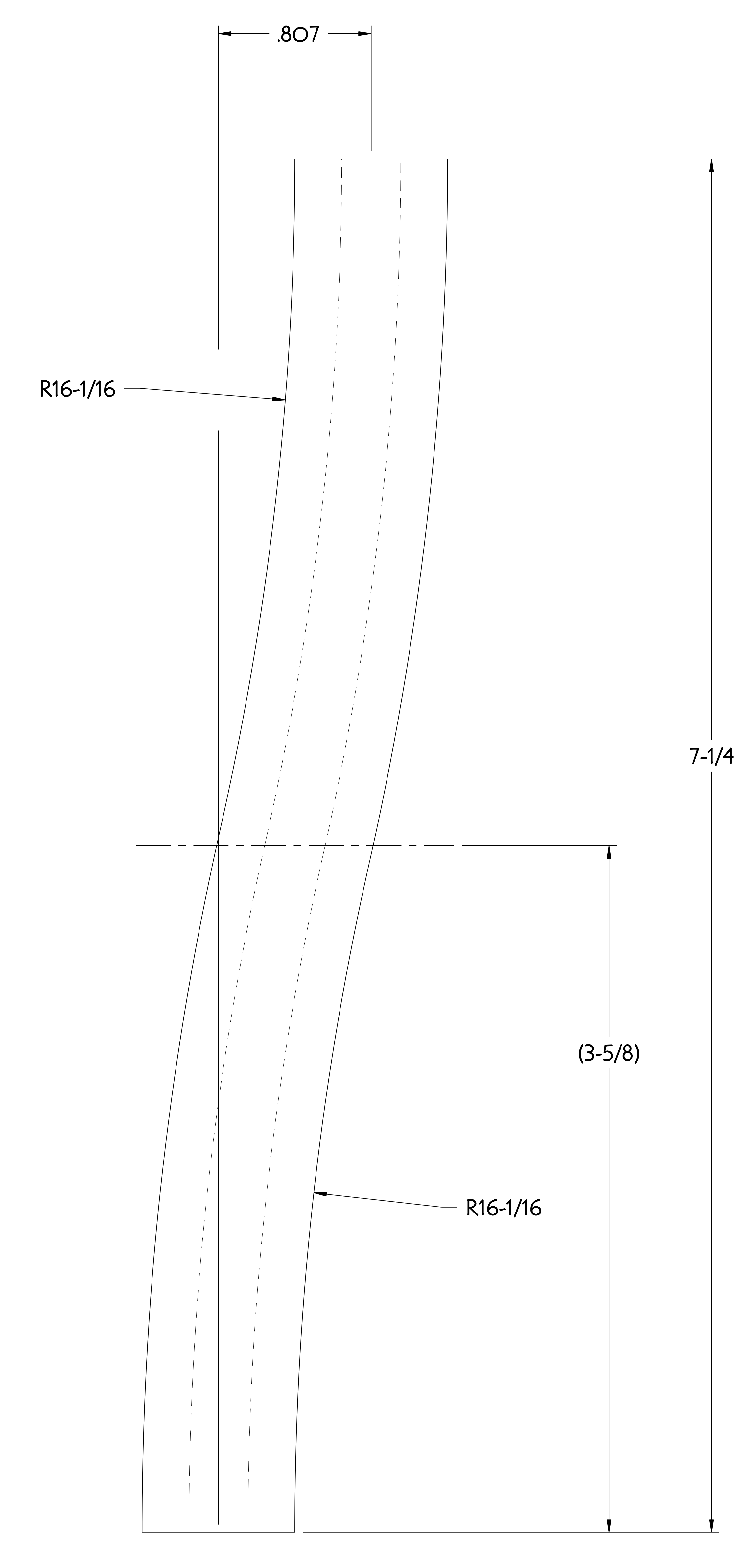
WEIGHT	1054.7 lbs
MODEL NAME	SE131-035
WELDING ENGINEER	

NCSX-SE131-035

NO.	REVISION	BY	CH	SUP	APPROVED	DATE



TYP TURN TO TURN TRANSITION
SCALE 3.000



TYP LAYER TO LAYER TRANSITION
SCALE 3.000

**RELEASED FOR
FABRICATION / INSTALLATION**
PPPL Drafting:

RELEASE LEVEL: Fabrication
DWG VERSION NO: 2

WEIGHT
MODEL NAME
SEI31-035
WELDING
ENGINEER

2	SEI31-047-R2	TF COIL LEAD LOCKING BLOCK CENTRAL	G-11 CR	I
1	SEI31-091	TF COIL FRONT TRANSITION FILLER DETAIL	G-11 CR	I
PART NO.	DRAWING NO	NOMENCLATURE OR DESCRIPTION	MATERIAL	QTY REOD
PARTS LIST				
COMPUTER GENERATED DRAWING MANUAL CHANGES NOT PERMITTED	PRO E	CENTRAL FILES: UNLESS OTHERWISE SPECIFIED	PRINCETON PLASMA PHYSICS LABORATORY PRINCETON UNIVERSITY NATIONAL COMPACT STELLARATOR EXPERIMENT	
DO NOT VERIFY INFORMATION BY SCALING DRAWING		DIMENSIONS ARE IN INCHES MACHINE SURFACES BREAK SHARP EDGES .005/.020	STELLARATOR CORE CONVENTIONAL COILS TF COIL WINDING ASSEMBLY/DETAILS	
		TOLERANCES NON-CUMULATIVE	DSN: J. RUSHINSKI	8/12/05
		DECIMAL-INCH FRACTIONS	CHK: M. KALISH/B. PAUL	8/12/05
		.XX +/- .030	ENGR: M. KALISH	8/12/05
		.XXX +/- .005	SUPV: J. SIEGEL	8/12/05
		ANGULAR +/- .05		
		OVER 120 +/- .12		
			DRAWING NO:	SEI31-035
			SHEET 6 OF 6	REV 0

NCSX-SEI31-035