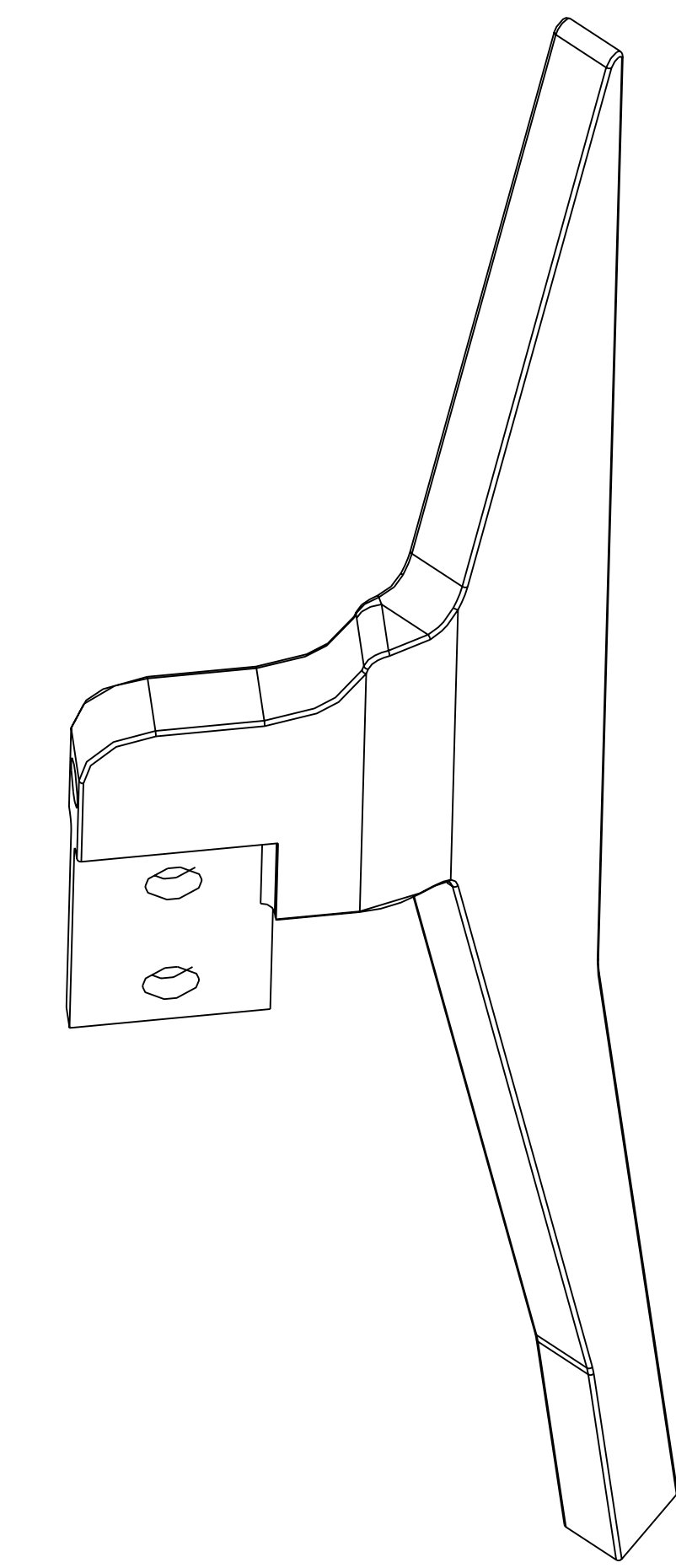
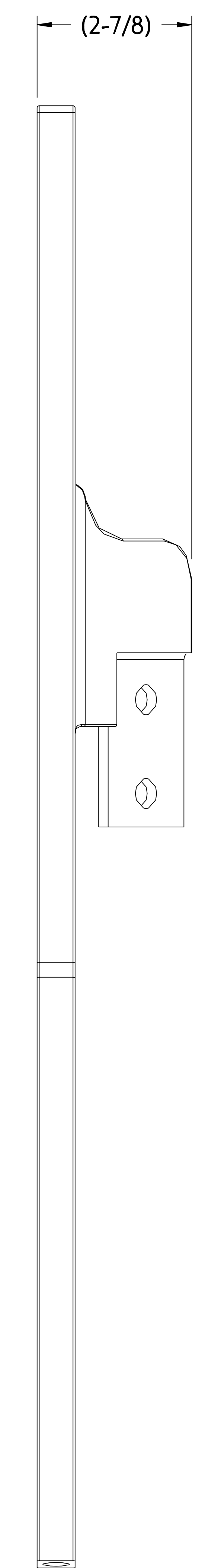
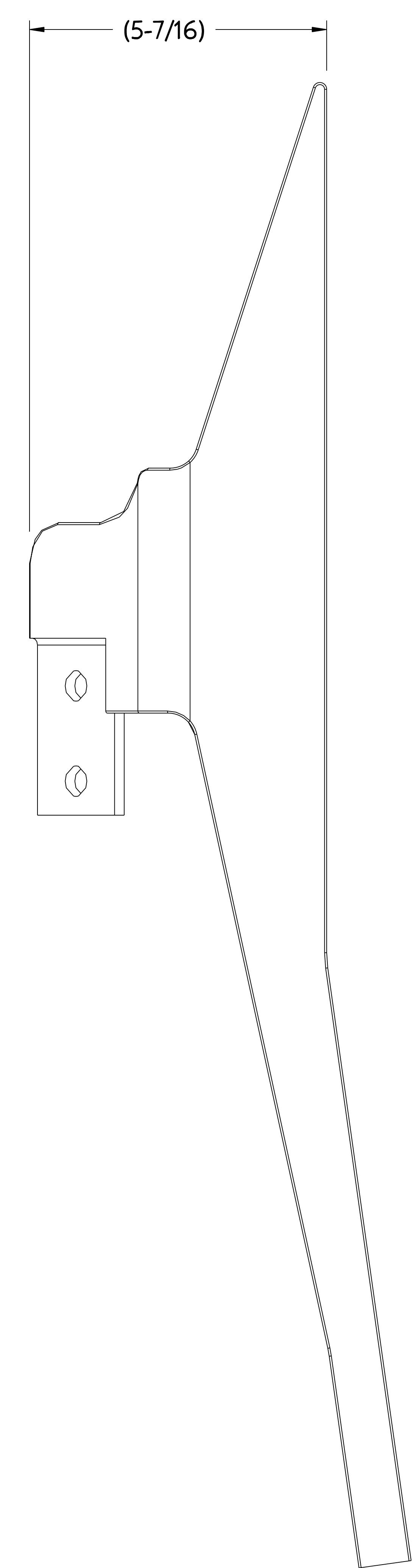
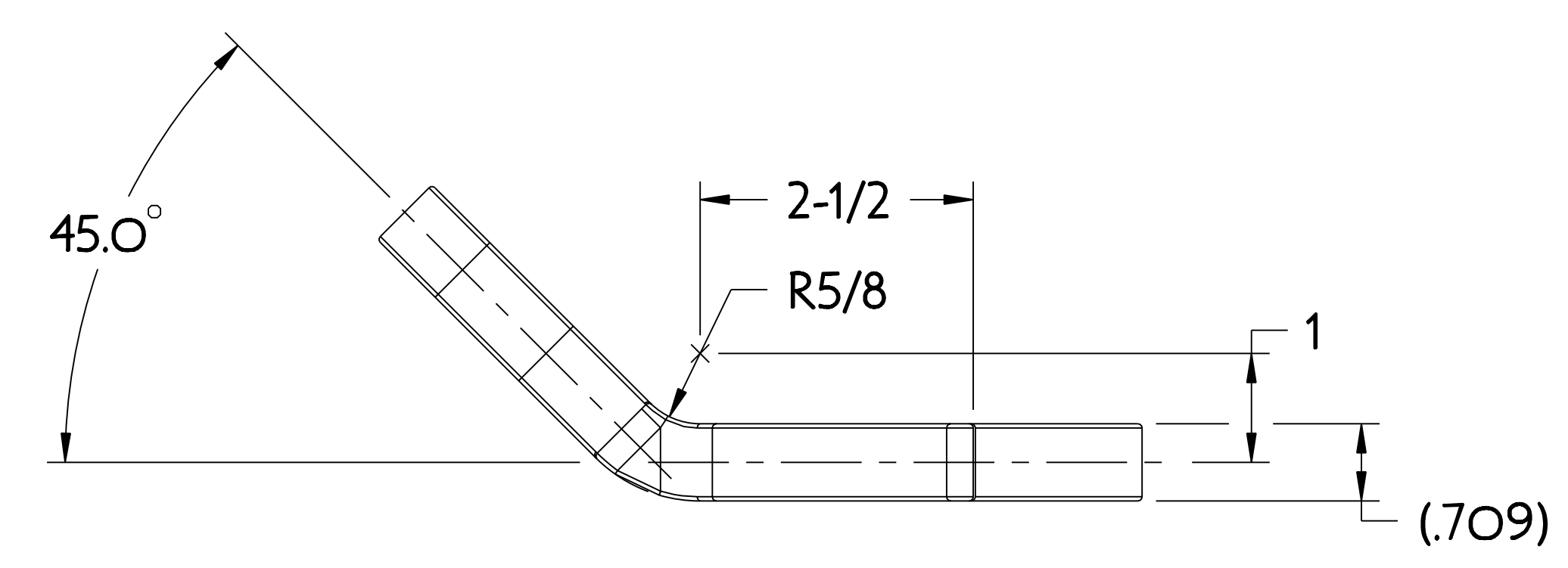


NO.	REVISION	BY	CH	SUP	APPROVED	DATE



NOTE

BEND PART #SE131-089 AS SHOWN.

RELEASED FOR FABRICATION / INSTALLATION
PPPL Drafting:

RELEASE LEVEL: Fabrication
DWG VERSION NO: proi_version

WEIGHT	12.0 lbs
MODEL NAME	SE131-058
WELDING ENGINEER	

I	SE131-058	TF COIL LEAD SHORT BENT LEFT	COPPER C-107	9
PART NO.	DRAWING NO	NOMENCLATURE OR DESCRIPTION	MATERIAL	QTY REOD
PARTS LIST				
COMPUTER GENERATED DRAWING MANUAL CHANGES NOT PERMITTED	CENTRAL FILES: UNLESS OTHERWISE SPECIFIED	PRINCETON PLASMA PHYSICS LABORATORY PRINCETON UNIVERSITY NATIONAL COMPACT STELLARATOR EXPERIMENT		
DO NOT VERIFY INFORMATION BY SCALING DRAWING	DIMENSIONS ARE IN INCHES MACHINE SURFACES BREAK SHARP EDGES .005/.020	STELLARATOR CORE CONVENTIONAL COILS TF COIL LEAD SHORT BENT - LEFT		
SCALE 0.750	TOLERANCES NON-CUMULATIVE	DSN: J. RUSHINSKI	2/01/06	DRAWING NO:
NEXT ASSEMBLY	DECIMAL-INCH FRACTIONS	CHK: M. KALISH	2/01/06	SE131-058
	.XX +/- .030	ENGR: M. KALISH	2/01/06	
	.XXX +/- .005	SUPV: J. SIEGEL	2/01/06	SHEET 1 OF 1
	ANGULAR +/- .015			REV 0

NCSX-SE131-058