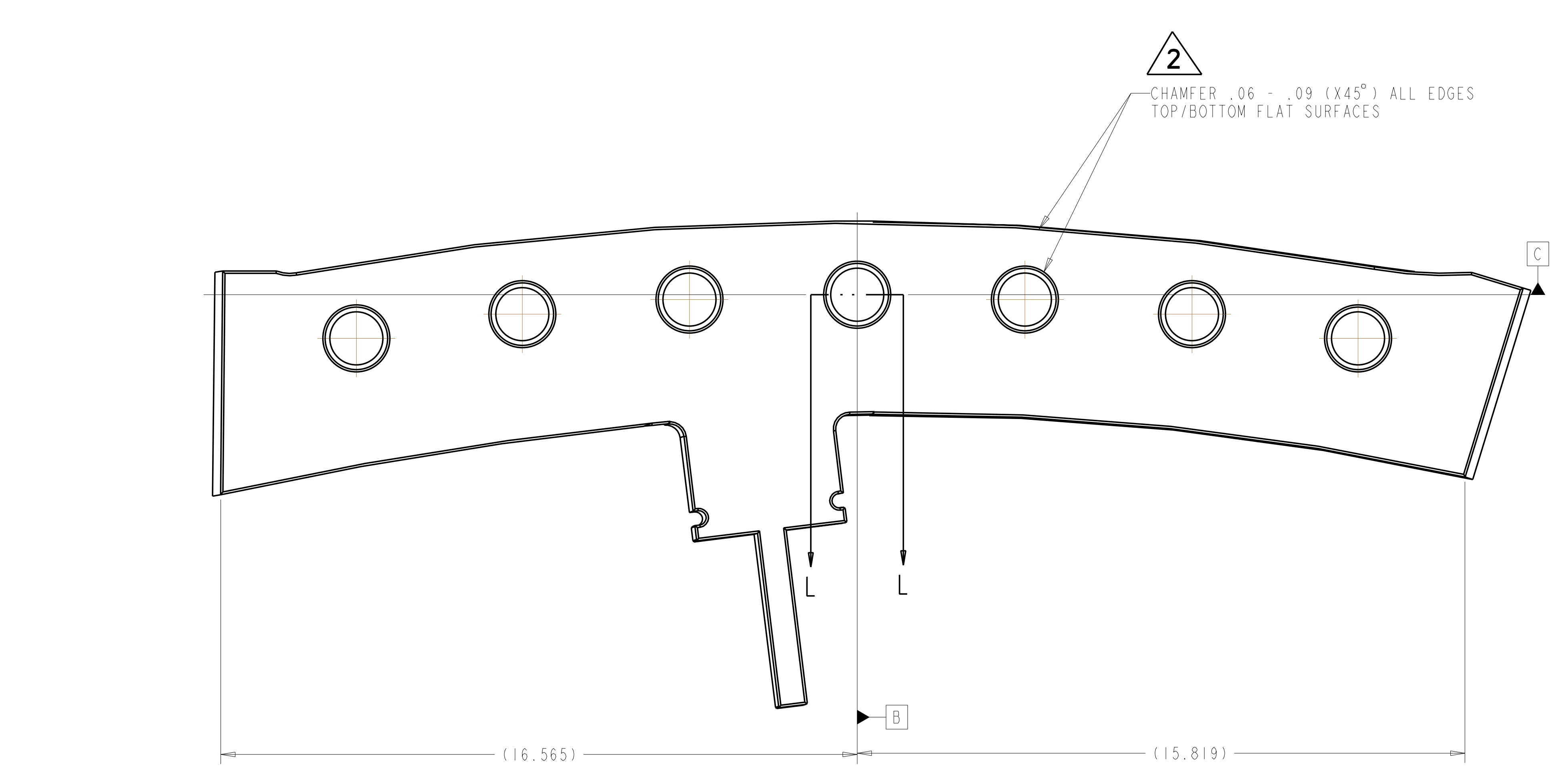
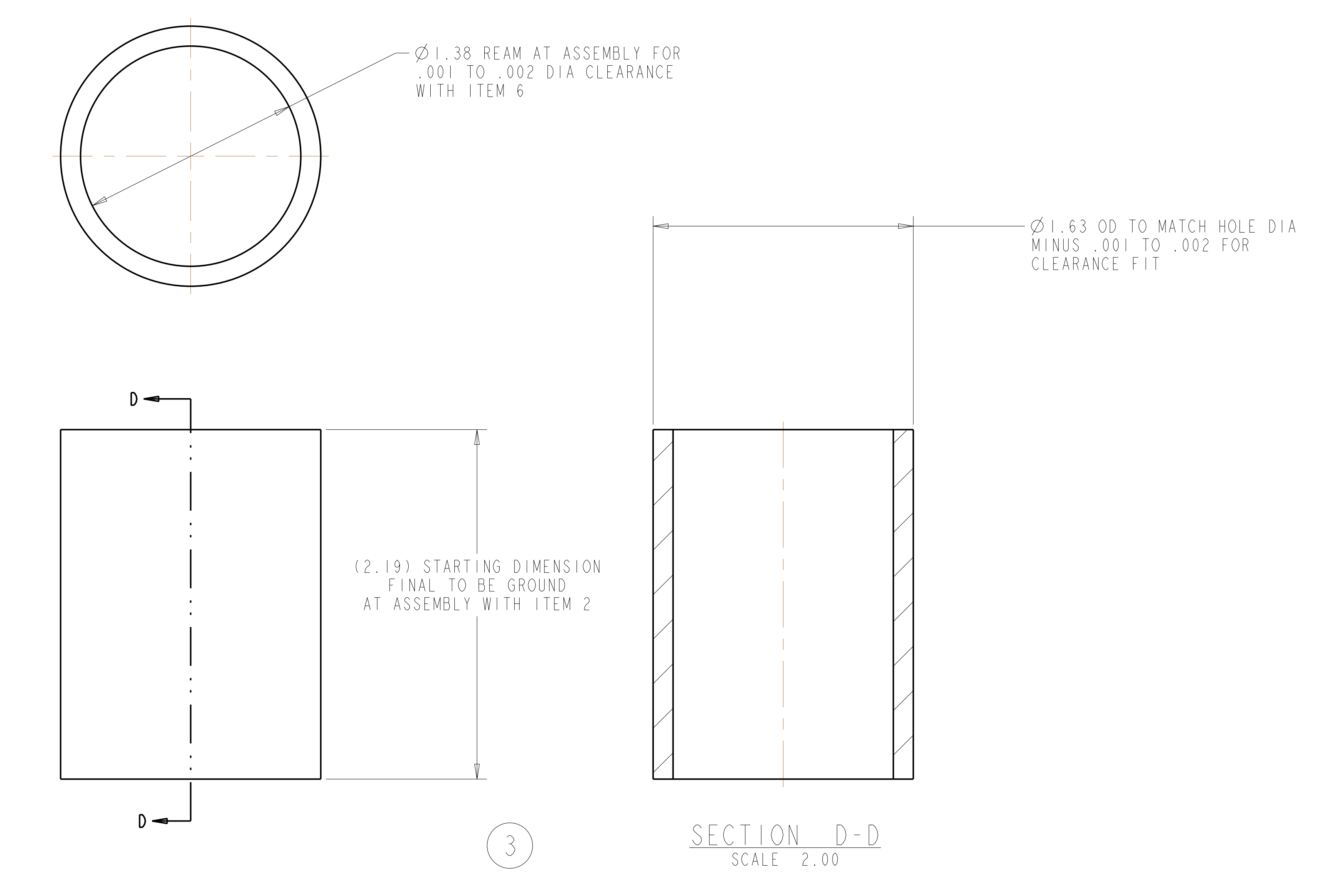
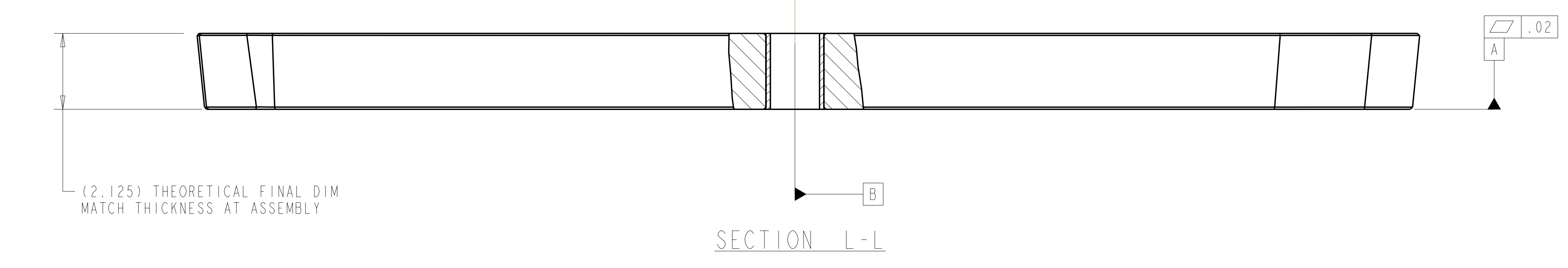


- NOTES:
1. INTERPRET DIMENSIONS AND TOLERANCES PER ANSI Y14.5M.
  2. DIMENSIONS ARE IN INCHES.
  3. DIMENSIONS APPLY AT TEMPERATURE OF 20-30°C (68-86°F).
  4. DRAWING DEPICTS FINAL MACHINED STATE OF ASSEMBLY DEFINED BY PRO/ENGINEER FILE SEI41-048.ASM.
  5. APPROXIMATE WEIGHT=105 LBS.
  6. SEE LATEST REVISION OF SPECIFICATION NCSX-CSPEC-141-03 FOR ADDITIONAL REQUIREMENTS.
  7. BOND INSULATING SLEEVE (ITEM 3) INTO SHIM (ITEM 2) USING LOCTITE 411 PER MANUFACTURER'S INSTRUCTIONS.
  8. SHIM MATERIAL FROM SAME CASTING AS PART SEI41-114. MARK FOR IDENTIFICATION.



**RELEASED FOR FABRICATION / INSTALLATION**  
 PPPL Drafting:

REV	DESCRIPTION	BY	DATE	CHK	DEPT	DATE	PE	REQ	DATE	DRNL	DOE	DATE
2	REVISED ASM AND DRAWING PER ECN 5059	GLL	12/08	MJC			DEW					
1	REVISED "T" PROFILE PER ECN-4903	GLL	9/04	MJC			DEW					

REV	DESCRIPTION	BY	DATE	CHK	DEPT	DATE	PE	REQ	DATE	DRNL	DOE	DATE
2	REVISED ASM AND DRAWING PER ECN 5059	GLL	12/08	MJC			DEW					
1	REVISED "T" PROFILE PER ECN-4903	GLL	9/04	MJC			DEW					

7	-3	SHIM INSULATING SLEEVE ALL TYPES	GIICR	NEMA LI 1 - 1998	3		
I	-2	POLYDIAL BREAK SHIM TYPE-A	NOTE 8	--	2		
AR	X	-1	POL BREAK SHIM ASSEMBLY TYPE-A				
SEI41-101							
		CAGE CODE	PART OR IDENTIFYING NO	NOMENCLATURE OR DESCRIPTION	MATERIAL	SPECIFICATION	FIND NO

NO REPRESENTATION OR WARRANTY, EXPRESSED OR IMPLIED, IS MADE AS TO THE ACCURACY, COMPLETENESS OR USEFULNESS OF THE INFORMATION OR STATEMENTS CONTAINED IN THESE DRAWINGS, OR THAT THE USE OR DISCLOSURE OF ANY INFORMATION, APPARATUS, METHOD OR PROCESS DISCLOSED IN THESE DRAWINGS MAY NOT INFRINGE PRIVATE RIGHTS OF OTHERS. NO LIABILITY IS ASSUMED WITH RESPECT TO THE USE OF, OR FOR DAMAGES RESULTING FROM THE USE OF, ANY INFORMATION, APPARATUS, METHOD OR PROCESS DISCLOSED IN THESE DRAWINGS. DRAWINGS MADE AVAILABLE FOR INFORMATION TO BIDDER ARE NOT TO BE USED FOR OTHER PURPOSES, AND ARE TO BE RETURNED UPON REQUEST OF THE FORWARDING CONTRACTOR.

**P** THIS DRAWING PRODUCED ON PRO-ENGINEER

SCALE NOTED	TOLERANCES UNLESS OTHERWISE SPECIFIED	FRACTIONS XX DECIMALS	XXX DECIMALS	ANGLES ±0°15'	BREAK SHARP EDGES	FINISH .125 UNLESS OTHERWISE SPECIFIED
DES: G LOVETT	6-30-04	DRW: P MILLER	6-30-04	CHK: M COLE	6-30-04	SECT:
DEPT:		PE: D WILLIAMSON	6-30-04	CR:		PJ:
REV:		RED:		PPPL DRFT J SIEGEL	6-30-04	

VERSION NO.	PLANT	BLDG	FL	SHT OF	TYPE	CLASS
2	X-10	5700	3	1	S	U
RELEASE LEVEL			Fabrication			
SEI41-048						
REV						
2						

H  
G  
F  
E  
D  
C  
B  
A  
SEI41-048