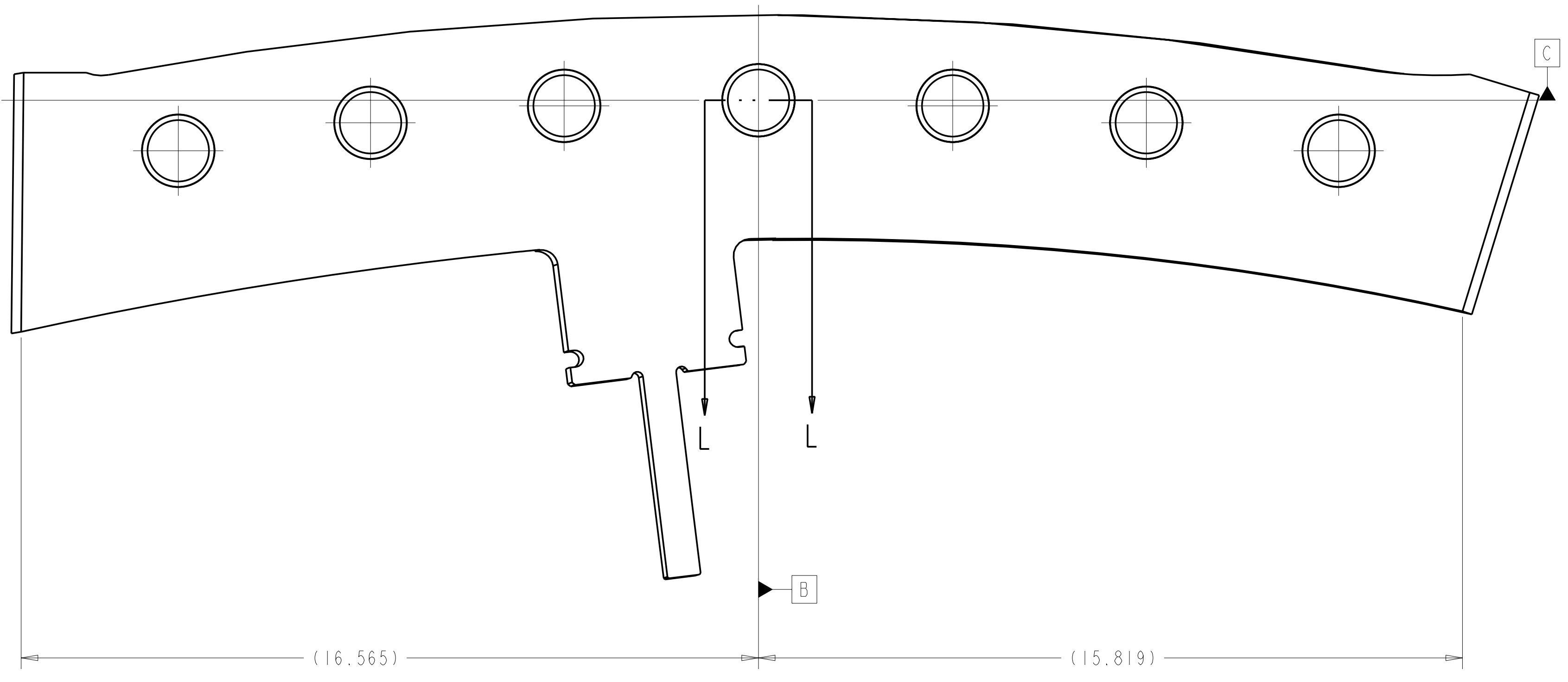
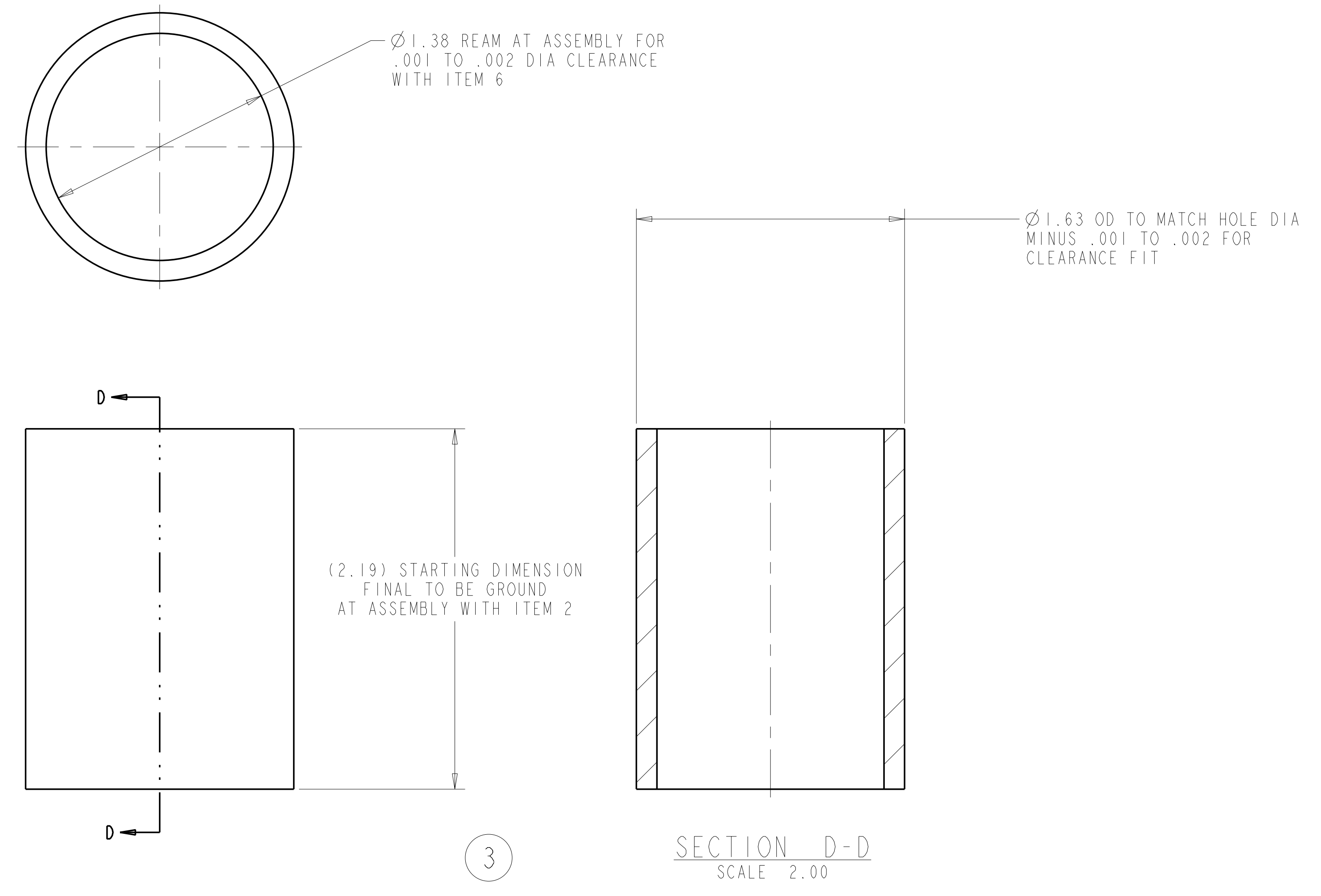
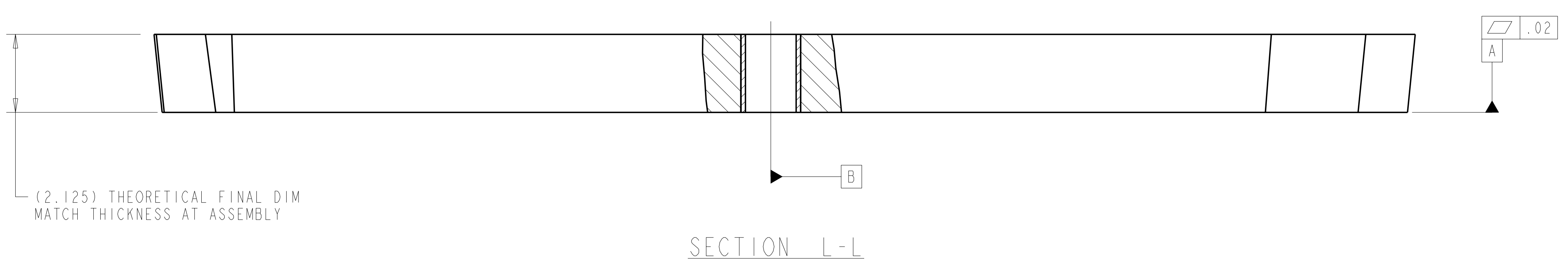


- NOTES:
- INTERPRET DIMENSIONS AND TOLERANCES PER ANSI Y14.5M.
 - DIMENSIONS ARE IN INCHES.
 - DIMENSIONS APPLY AT TEMPERATURE OF 20-30°C (68-86°F).
 - DRAWING DEPICTS FINAL MACHINED STATE OF ASSEMBLY DEFINED BY PRO/ENGINEER FILE SE141-048.ASM.
 - APPROXIMATE WEIGHT=105 LBS.
 - SEE LATEST REVISION OF SPECIFICATION NCSX-CSPEC-141-03 FOR ADDITIONAL REQUIREMENTS.
 - BOND INSULATING SLEEVE (ITEM 3) INTO SHIM (ITEM 2) USING LOCTITE 411 PER MANUFACTURER'S INSTRUCTIONS.
 - SHIM MATERIAL FROM SAME CASTING AS PART SE141-114. MARK FOR IDENTIFICATION.



SCALE 0.50

RELEASED FOR FABRICATION / INSTALLATION
 PPPL Drafting:

REV	DESCRIPTION	BY	DATE	CHK	DEPT	DATE	PE	REQ	DATE	ORNL	DOE	DATE

7	-3	SHIM INSULATING SLEEVE ALL TYPES	GIICR	NEMA LI 1 - 1998	3		
I	-2	POLOIDAL BREAK SHIM TYPE-A	NOTE 8	--	2		
AR	X	-1	POL BREAK SHIM ASSEMBLY TYPE-A			1	
SE141-101		CAGE CODE	PART OR IDENTIFYING NO	NOMENCLATURE OR DESCRIPTION	MATERIAL	SPECIFICATION	FIND NO

← NEXT ASSEMBLY PARTS LIST

SCALE NOTED										DES: G LOVETT	6-30-04	UT-BATTELLE Oak Ridge National Laboratory managed for the DEPARTMENT OF ENERGY under U.S. GOVERNMENT contract DE-AC05-00OR22725 UT-BATTELLE, LLC, Oak Ridge, Tennessee PROJECT NAME NATIONAL COMPACT STELLARATOR EXPERIMENT							
TOLERANCES UNLESS OTHERWISE SPECIFIED										DRW: P MILLER	6-30-04								
FRACTIONS										CHK: M COLE	6-30-04								
XX DECIMALS ± .01										DEPT: :									
XXX DECIMALS ± .005										PE: D WILLIAMSON	6-30-04	RELEASE LEVEL Fabrication SE141-048 REV 0							
ANGLES ±0°15'										CR: :									
BREAK SHARP EDGES 06 MAX										PJ: :									
FINISH .125 UNLESS OTHERWISE SPECIFIED										REO: :		PPPL DRFT J SIEGEL	6-30-04						
												VERSION NO.	PLANT	BLDG	FL	SHT OF	TYPE	CLASS	
												15	X-10	5700	3	1	1	S	U
										DRAWING APPROVALS		DATE							

NO REPRESENTATION OR WARRANTY, EXPRESSED OR IMPLIED, IS MADE AS TO THE ACCURACY, COMPLETENESS OR USEFULNESS OF THE INFORMATION OR STATEMENTS CONTAINED IN THESE DRAWINGS, OR THAT THE USE OR DISCLOSURE OF ANY INFORMATION, APPARATUS, METHOD OR PROCESS DISCLOSED IN THESE DRAWINGS MAY NOT INFRINGE PRIVATE RIGHTS OF OTHERS. NO LIABILITY IS ASSUMED WITH RESPECT TO THE USE OF, OR FOR DAMAGES RESULTING FROM THE USE OF, ANY INFORMATION, APPARATUS, METHOD OR PROCESS DISCLOSED IN THESE DRAWINGS. DRAWINGS MADE AVAILABLE FOR INFORMATION TO BIDDER ARE NOT TO BE USED FOR OTHER PURPOSES, AND ARE TO BE RETURNED UPON REQUEST OF THE FORWARDING CONTRACTOR.

P THIS DRAWING PRODUCED ON PRO-ENGINEER