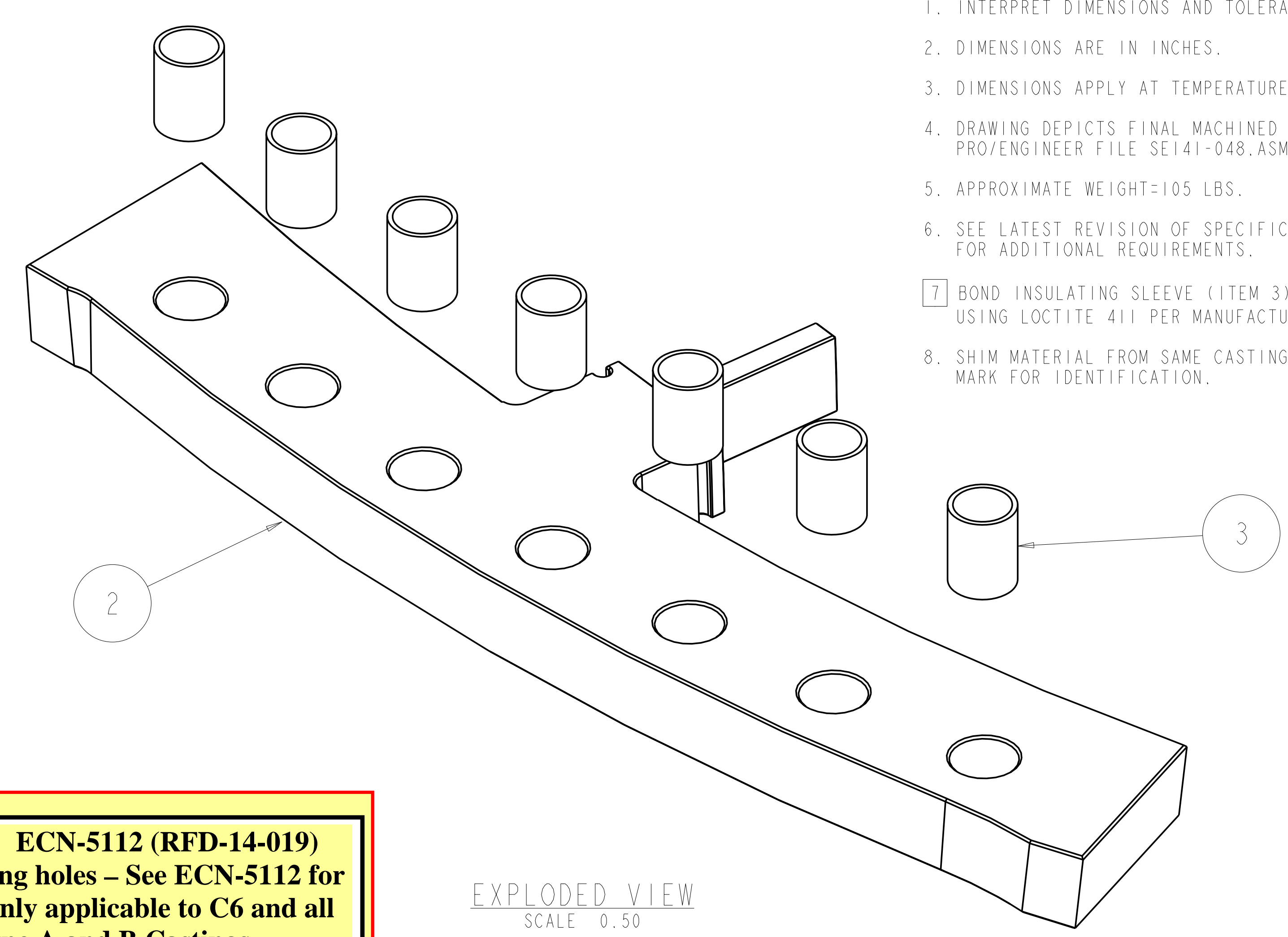
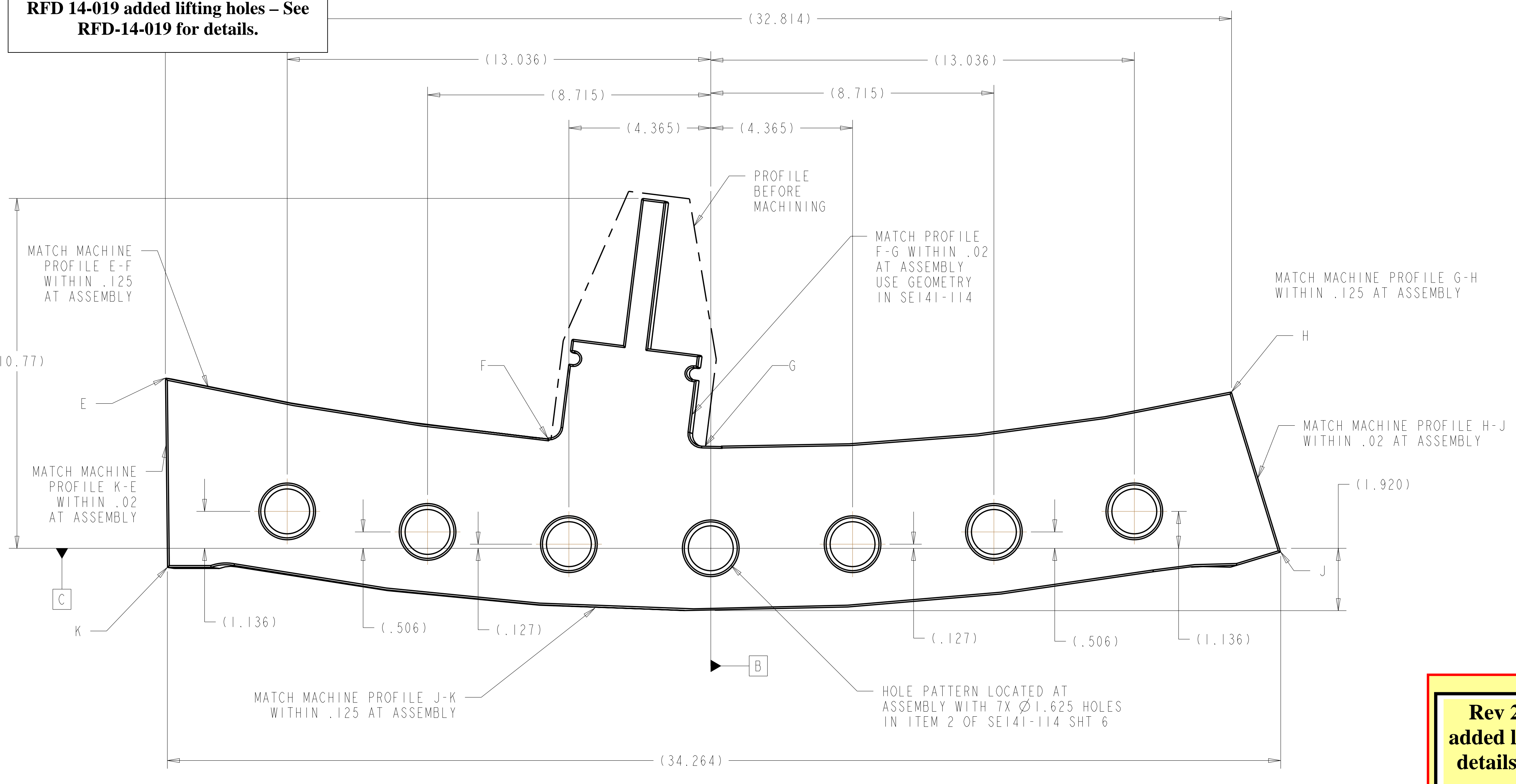
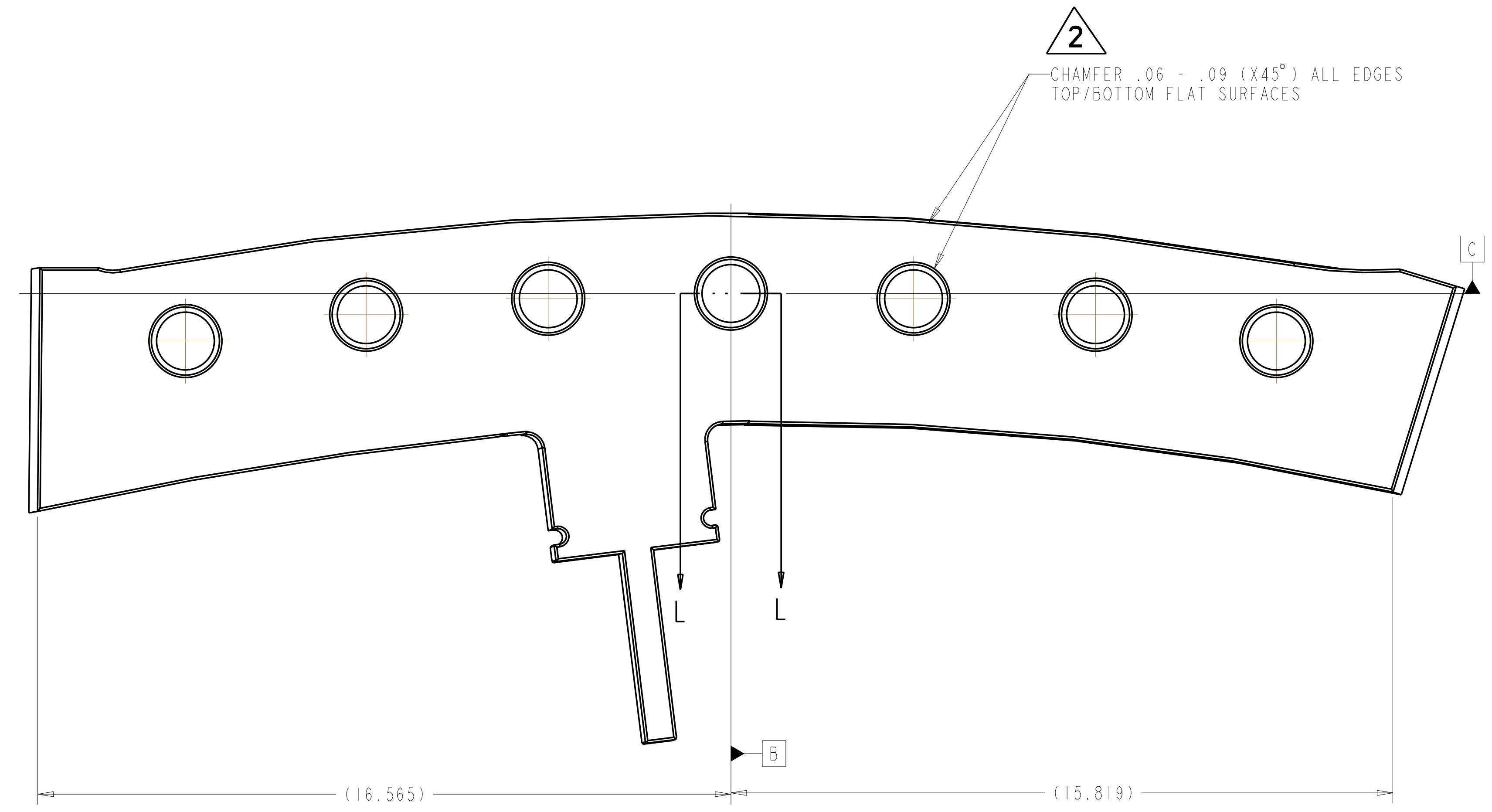
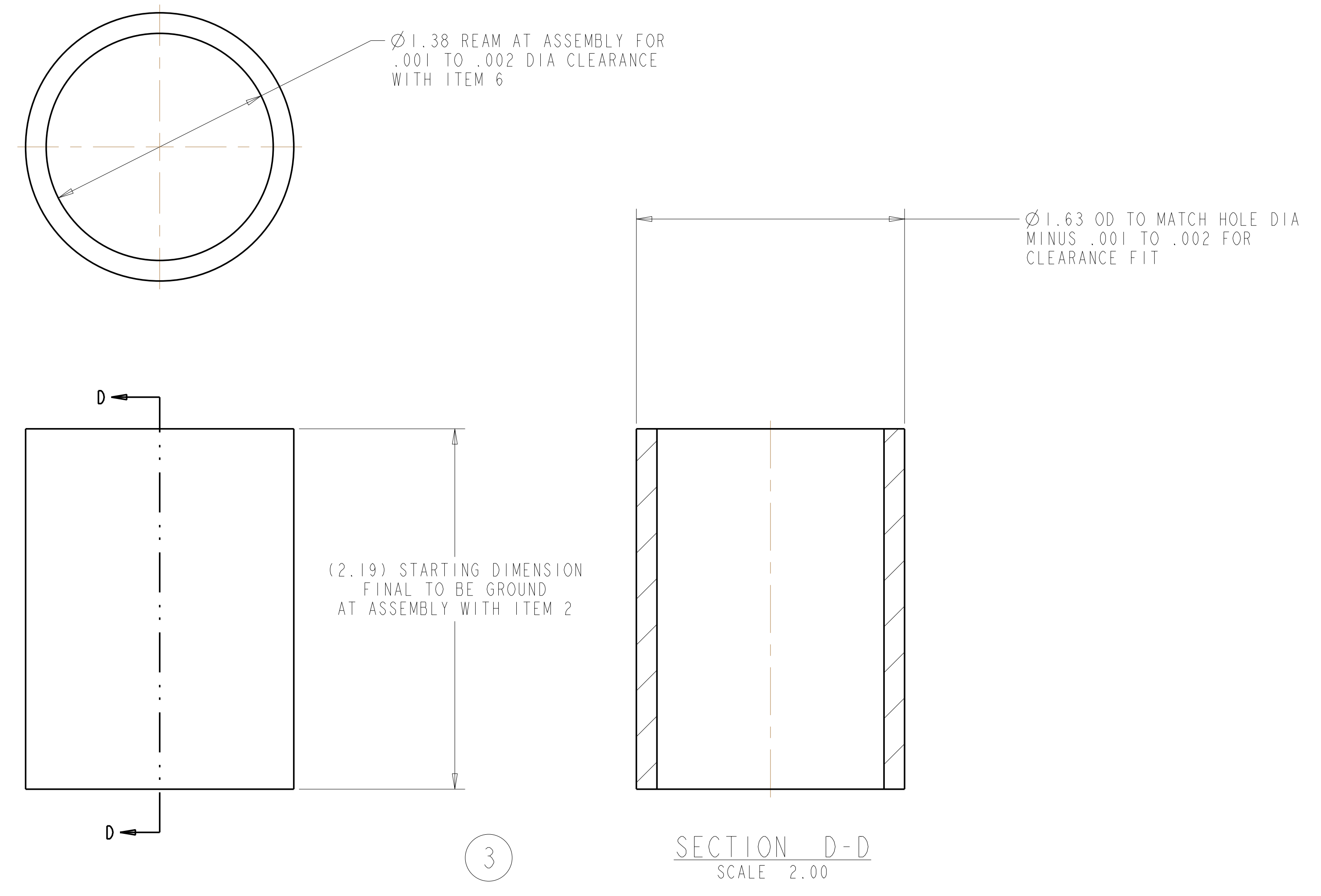
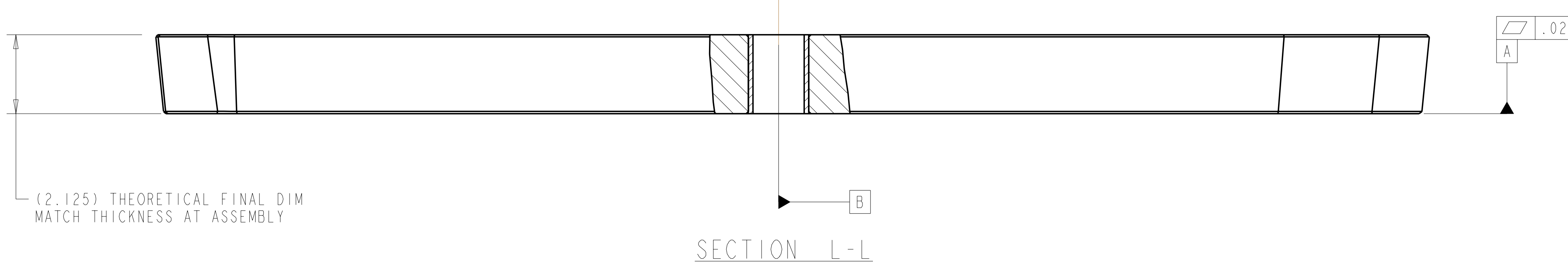


RFD 14-019 added lifting holes - See RFD-14-019 for details.



- NOTES:
1. INTERPRET DIMENSIONS AND TOLERANCES PER ANSI Y14.5M.
  2. DIMENSIONS ARE IN INCHES.
  3. DIMENSIONS APPLY AT TEMPERATURE OF 20-30°C (68-86°F).
  4. DRAWING DEPICTS FINAL MACHINED STATE OF ASSEMBLY DEFINED BY PRO/ENGINEER FILE SE141-048.ASM.
  5. APPROXIMATE WEIGHT=105 LBS.
  6. SEE LATEST REVISION OF SPECIFICATION NCSX-CSPEC-141-03 FOR ADDITIONAL REQUIREMENTS.
  7. BOND INSULATING SLEEVE (ITEM 3) INTO SHIM (ITEM 2) USING LOCTITE 411 PER MANUFACTURER'S INSTRUCTIONS.
  8. SHIM MATERIAL FROM SAME CASTING AS PART SE141-114. MARK FOR IDENTIFICATION.

**Rev 2-a: ECN-5112 (RFD-14-019) added lifting holes - See ECN-5112 for details. Only applicable to C6 and all Type A and B Castings**



**RELEASED FOR FABRICATION / INSTALLATION**  
PPPL Drafting:

REV	DESCRIPTION	BY	DATE	CHK	DEPT	DATE	PE	REQ	DATE	ORNL	DOE	DATE
2	REVISED ASM AND DRAWING PER ECN 5059	GLL	12/05	MJC			DEW					
1	REVISED "T" PROFILE PER ECN-4903	GLL	8/04	MJC			DEW					

7	-3	SHIM INSULATING SLEEVE ALL TYPES	GIICR	NEMA LI 1 - 1998	3
I	-2	POLOIDAL BREAK SHIM TYPE-A	NOTE 8	--	2
AR	X	-1	POL BREAK SHIM ASSEMBLY TYPE-A		
SE141-101					

NO REPRESENTATION OR WARRANTY, EXPRESSED OR IMPLIED, IS MADE AS TO THE ACCURACY, COMPLETENESS OR USEFULNESS OF THE INFORMATION OR STATEMENTS CONTAINED IN THESE DRAWINGS, OR THAT THE USE OR DISCLOSURE OF ANY INFORMATION, APPARATUS, METHOD OR PROCESS DISCLOSED IN THESE DRAWINGS MAY NOT INFRINGE PRIVATE RIGHTS OF OTHERS. NO LIABILITY IS ASSUMED WITH RESPECT TO THE USE OF, OR FOR DAMAGES RESULTING FROM THE USE OF, ANY INFORMATION, APPARATUS, METHOD OR PROCESS DISCLOSED IN THESE DRAWINGS. DRAWINGS MADE AVAILABLE FOR INFORMATION TO BIDDER ARE NOT TO BE USED FOR OTHER PURPOSES, AND ARE TO BE RETURNED UPON REQUEST OF THE FORWARDING CONTRACTOR.

**P** THIS DRAWING PRODUCED ON PRO-ENGINEER

REVISION OR ISSUE PURPOSE	DATE	CHK	DEPT	DATE	PE	REQ	DATE	ORNL	DOE	DATE
2	REVISED ASM AND DRAWING PER ECN 5059	GLL	12/05	MJC			DEW			
1	REVISED "T" PROFILE PER ECN-4903	GLL	8/04	MJC			DEW			

SCALE NOTED	DES	DATE	DRW	DATE	CHK	DATE	SECT	DEPT	PE	DATE	CR	DATE	REO	DATE	PPPL DRFT	DATE
TOLERANCES UNLESS OTHERWISE SPECIFIED	G LOVETT	6-30-04	P MILLER	6-30-04	M COLE	6-30-04			D WILLIAMSON	6-30-04					J SIEGEL	6-30-04
FRACTIONS ±.01																
XX DECIMALS ±.005																
XXX DECIMALS ±0.015																
ANGLES ±0°15'																
BREAK SHARP EDGES 06 MAX																
FINISH .125 UNLESS OTHERWISE SPECIFIED																

UT-BATTELLE	Oak Ridge National Laboratory	managed for the DEPARTMENT OF ENERGY under U.S. GOVERNMENT contract DE-AC05-00OR22725 UT-BATTELLE, LLC. Oak Ridge, Tennessee				
PROJECT NAME: NATIONAL COMPACT STELLARATOR EXPERIMENT						
POL BREAK SHIM ASSEMBLY TYPE-A						
VERSION NO.	PLANT	BLDG	FL	SHT OF	TYPE	CLASS
2	X-10	5700	3	1	S	U
RELEASE LEVEL	SE141-048		REV	2		
Fabrication						