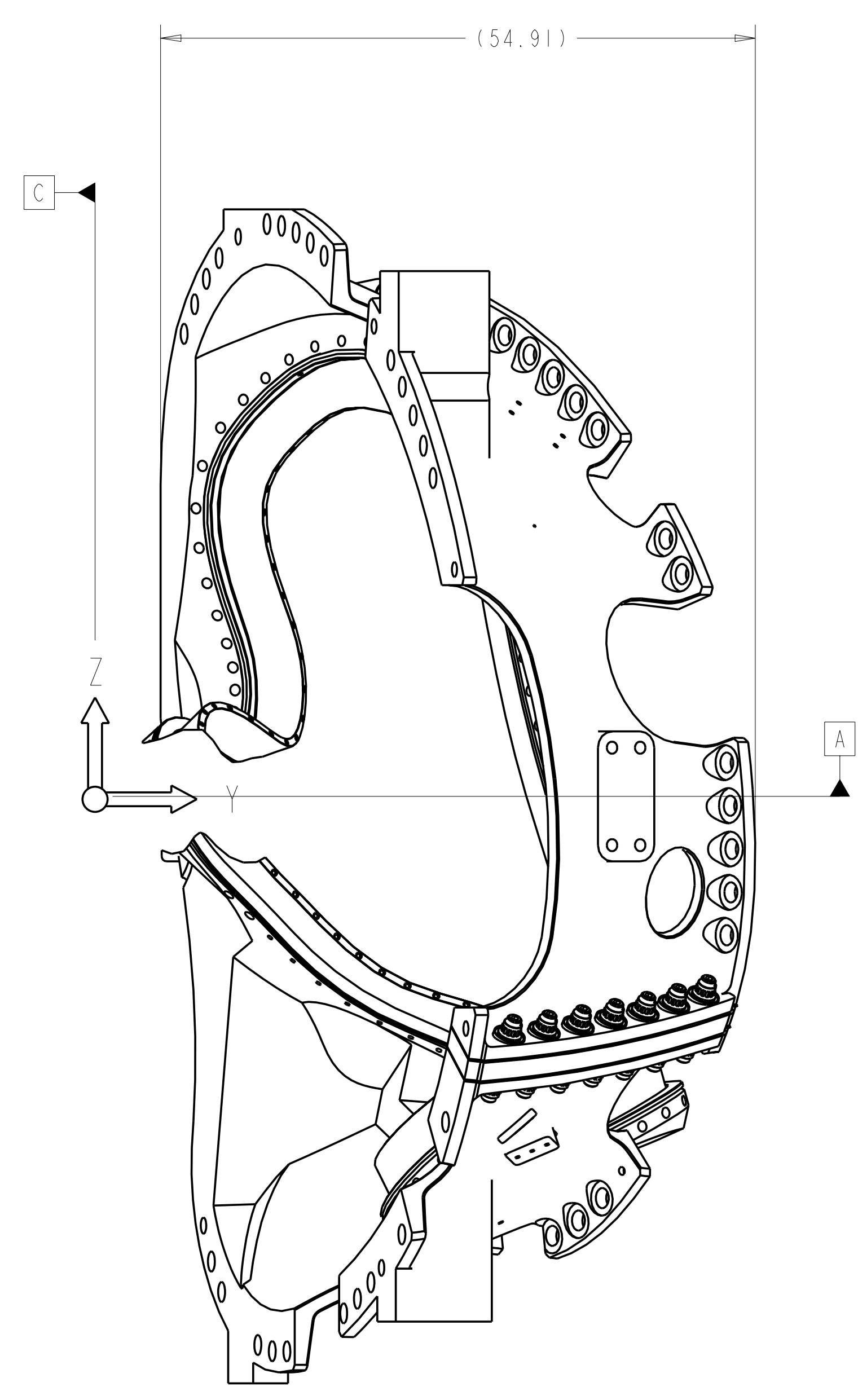
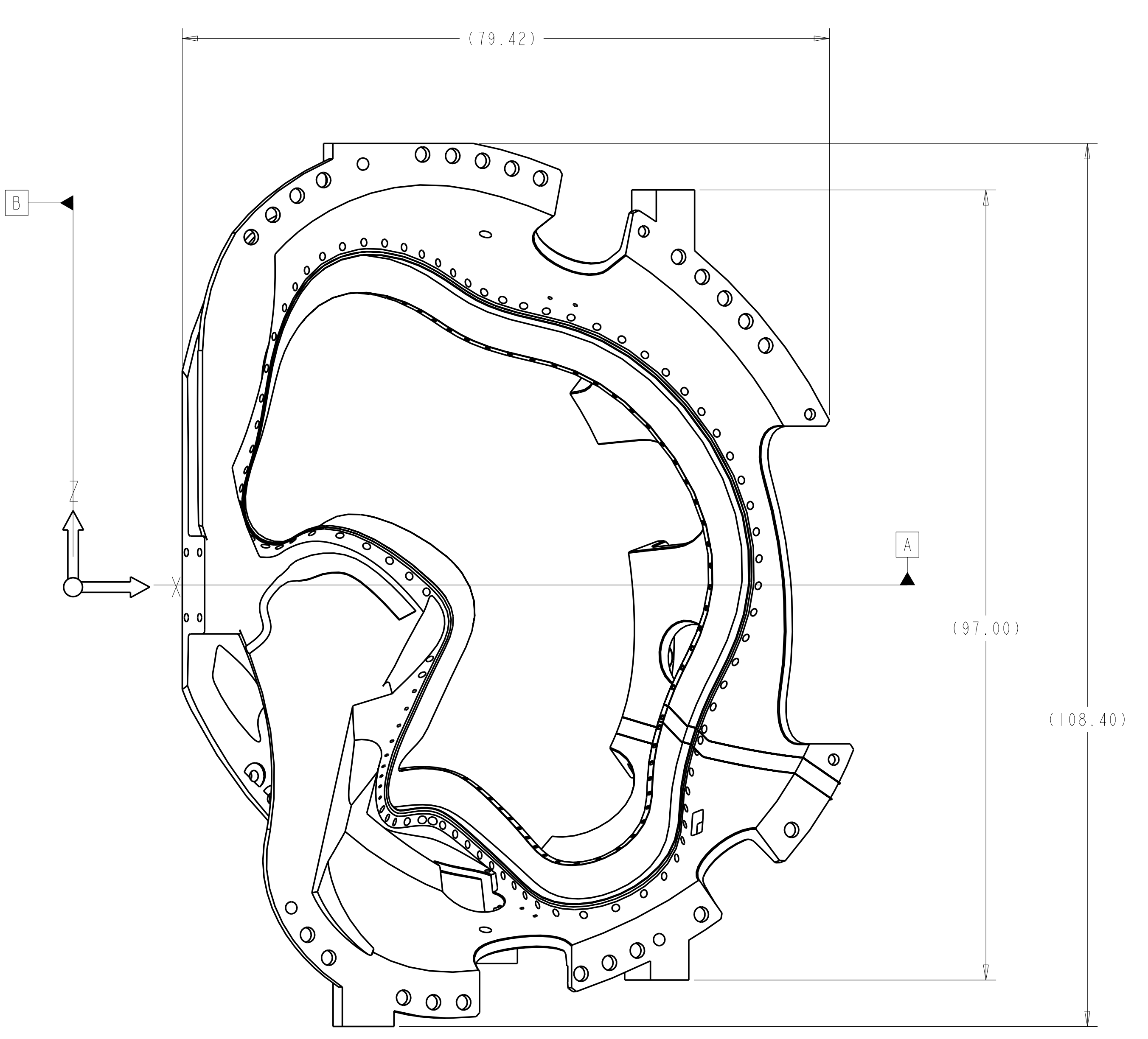


ISOMETRIC VIEW
 SCALE .25

- NOTES:
- DRAWING PREPARED IN ACCORDANCE WITH ASME Y14.8M-1996
 - INTERPRET DIMENSIONS AND TOLERANCES PER ANSI Y14.5M-1994.
 - DIMENSIONS ARE IN INCHES
 - DRAWING DEPICTS FINAL MACHINED STATE OF PART DEFINED BY PRO/ENGINEER FILE SE141-102.PRT.
 - UNLESS OTHERWISE SPECIFIED, DIMENSIONS ARE RELATED TO DATUM A- (PRIMARY X-Y PLANE, TOP) DATUM B- (SECONDARY Y-Z PLANE, SIDE) DATUM C- (TERTIARY X-Z PLANE, FRONT)
 - DIMENSIONS APPLY AT ROOM TEMPERATURE. OPERATING TEMP 80 K
 - DIMENSIONS AND TOLERANCES EXCLUDE PROCESS MATERIAL ALLOWANCES WHICH MAY ADD MASS.
 - APPROXIMATE WEIGHT = 4950-LBS.
 - MATCH DRILL OR REAM AS REQUIRED TO ACHIEVE RUNNING FIT BETWEEN PARTS AT ASSEMBLY.
 - LUBRICATE THREADED SURFACES WITH MOLYCOTE 321R, PER MANUFACTURES INSTRUCTIONS.
 - SEE SPECIFICATION NCSX-CSPEC-141-01-04 FOR ADDITIONAL REQUIREMENTS
 - BOND INSULATING SLEEVE (F/N 5) INTO WINDING FORM (F/N 2) USING LOCTITE 411 PER MANUFACTURES INSTRUCTIONS.



SCALE .25

REV	CAGE CODE	PART OR IDENTIFYING NO	NOMENCLATURE OR DESCRIPTION	MATERIAL	SPECIFICATION	FIND NO
14	-9	NUT, 12PT HEX, 1-3/8-6 UNC-2B	A286 SILVER PLATED	SUPPLIED BY PPPL		9
14	-8	WASHER, 2.75 OD X 1.45 ID X .50 THK	316 SS	SUPPLIED BY PPPL		8
7	-7	STUD, 1-3/8-6 UNC-2A	316 SS	SUPPLIED BY PPPL		7
14	-6	WASHER, 2.75 OD X 1.45 ID X .125 THK	GIICR	NEMA LI 1 - 1998		6
7	-5	BUSHING, 1.376 ID X .031 THK x 4.1 LG	GIICR	NEMA LI 1 - 1998		5
AR	-4	INSULATING SHEET, .031 +/- .0065 THK	GIICR	NEMA LI 1 - 1998		4
1	SE141-058	POLOIDIAL BREAK SHIM TYPE-B ASSEMBLY				3
1	SE141-115	PROTOTYPE WINDING FORM TYPE-B				2
AR	-1	WINDING FORM TYPE-B ASSEMBLY				1

← NEXT ASSEMBLY

FOR INFORMATIONAL PURPOSES ONLY
 NOT FOR FABRICATION

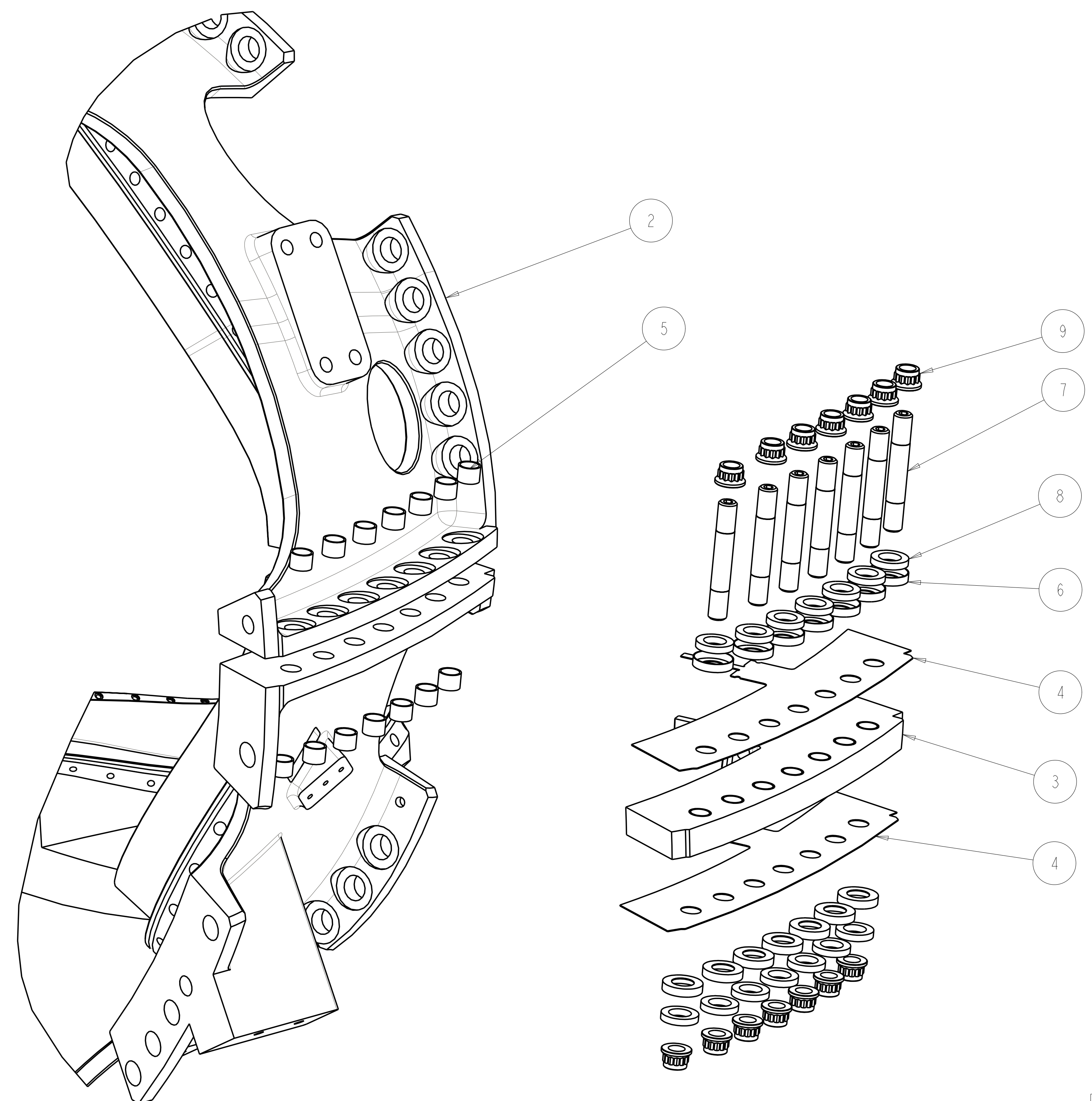
NO REPRESENTATION OR WARRANTY, EXPRESSED OR IMPLIED, IS MADE AS TO THE ACCURACY, COMPLETENESS OR USEFULNESS OF THE INFORMATION OR STATEMENTS CONTAINED IN THESE DRAWINGS, OR THAT THE USE OR DISCLOSURE OF ANY INFORMATION, APPARATUS, METHOD OR PROCESS DISCLOSED IN THESE DRAWINGS MAY NOT INFRINGE PRIVATE RIGHTS OF OTHERS. NO LIABILITY IS ASSUMED WITH RESPECT TO THE USE OF, OR FOR DAMAGES RESULTING FROM THE USE OF, ANY INFORMATION, APPARATUS, METHOD OR PROCESS DISCLOSED IN THESE DRAWINGS. DRAWINGS MADE AVAILABLE FOR INFORMATION TO BIDDER ARE NOT TO BE USED FOR OTHER PURPOSES, AND ARE TO BE RETURNED UPON REQUEST OF THE FORWARDING CONTRACTOR.

P THIS DRAWING PRODUCED ON PRO-ENGINEER

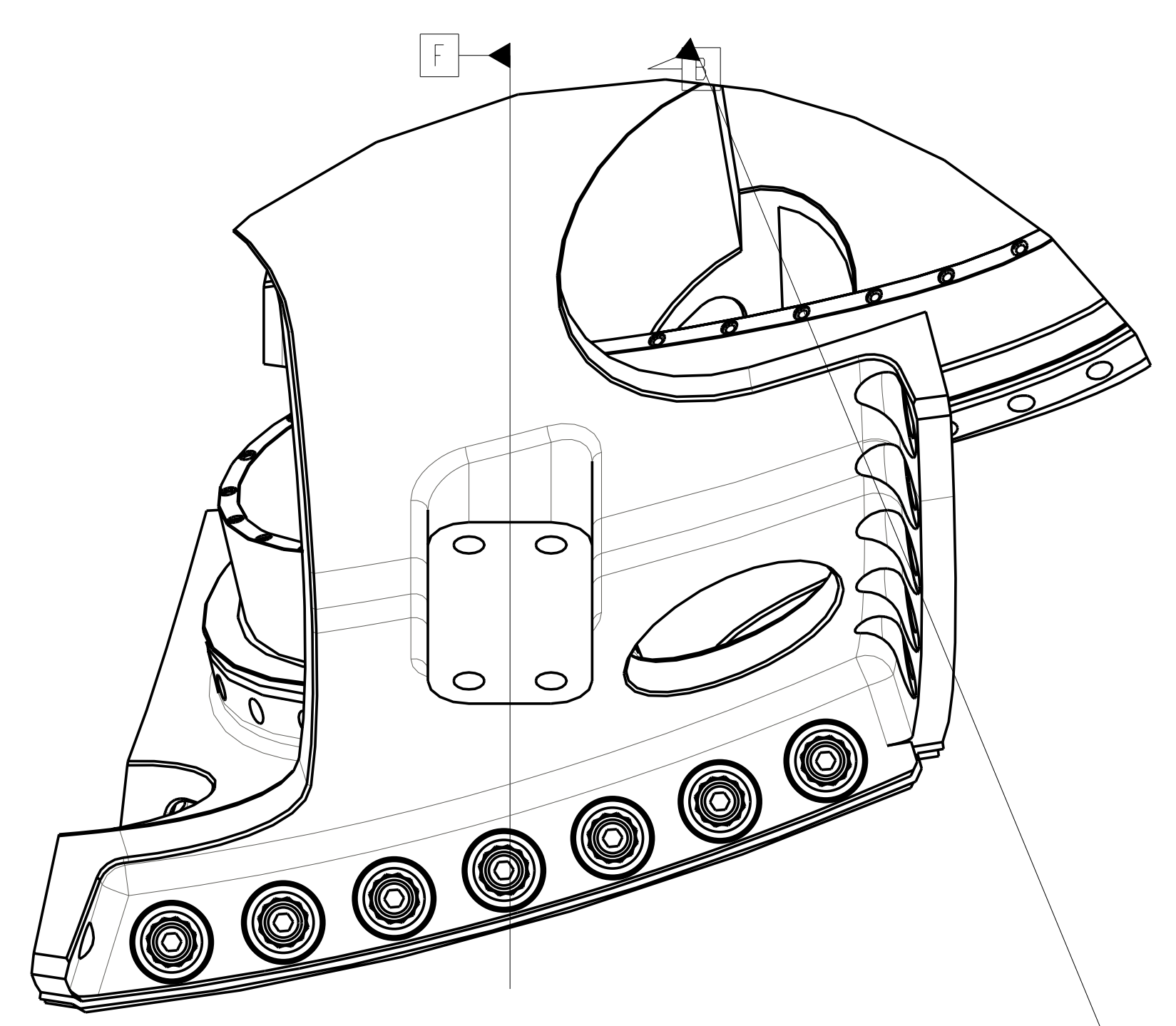
REV	DESCRIPTION	BY	DATE	CHK	DEPT	DATE	PE	REQ	DATE	ORNL	DOE	DATE

SCALE	0.1	DES	T. BROWN	5-5-04
TOLERANCES UNLESS OTHERWISE SPECIFIED		DRW	PAUL MILLER	6-7-04
FRACTIONS		CHK	M. COLE	6/25/04
XX DECIMALS	±.01	SECT		
XXX DECIMALS	±.005	DEPT		
ANGLES	±0°15'	PE	D. WILLIAMSON	6/25/04
BREAK SHARP EDGES	06 MAX	CR		
FINISH	.125 UNLESS OTHERWISE SPECIFIED	PJ		
		RD		
		PPPL DRFT	J. STEGEL	6/25/04

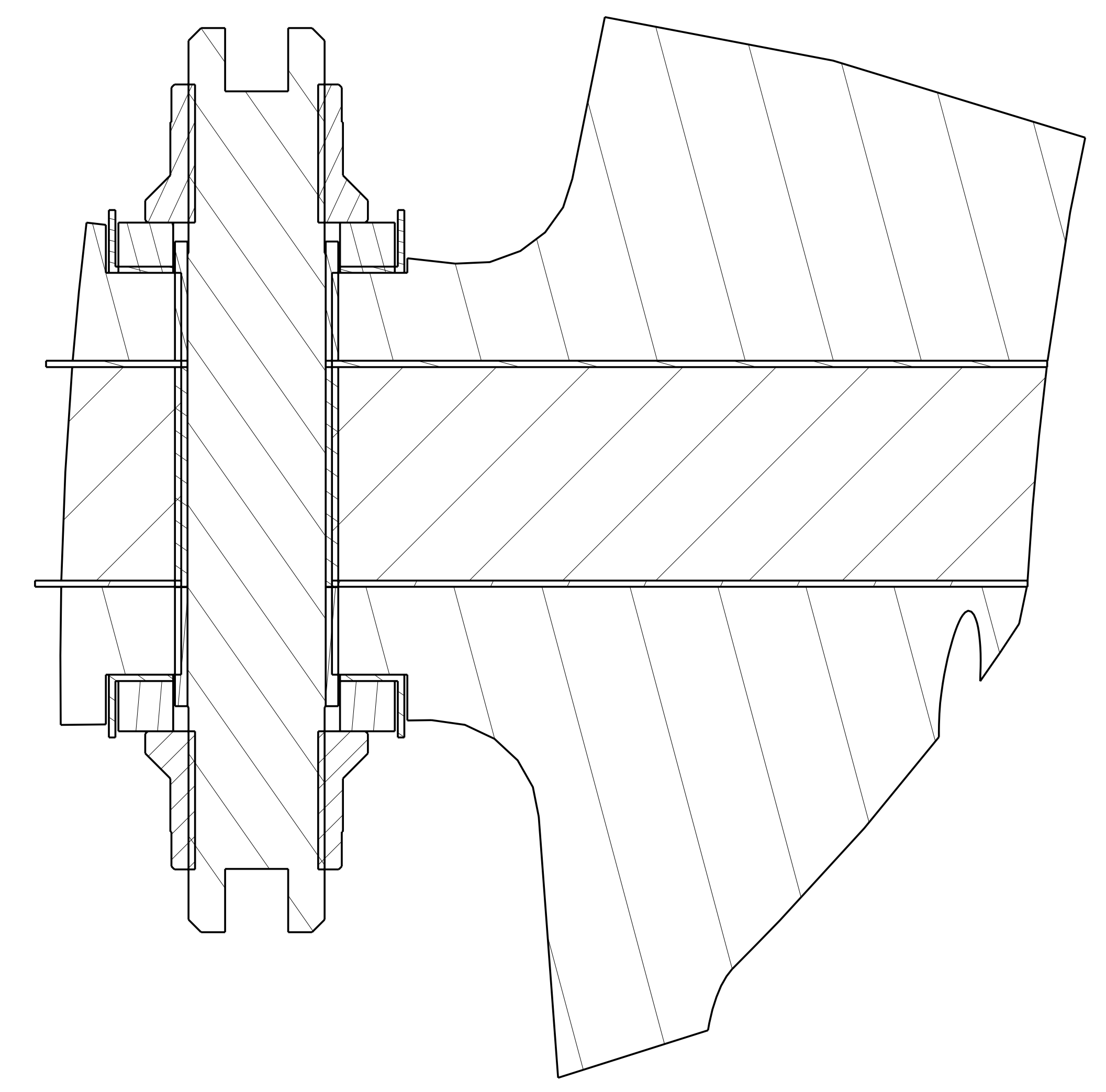
UT-BATTELLE		Oak Ridge National Laboratory managed for the DEPARTMENT OF ENERGY under U.S. GOVERNMENT contract DE-AC05-00OR22725 UT-BATTELLE, LLC. Oak Ridge, Tennessee	
PROJECT NAME NATIONAL COMPACT STELLARATOR EXPERIMENT			
WINDING FORM TYPE-B ASSEMBLY			
VERSION NO.	PLANT	BLDG	FL
28	ORNL	5700	3
RELEASE LEVEL	SHT OF	TYPE	CLASS
WIP	1	A	U



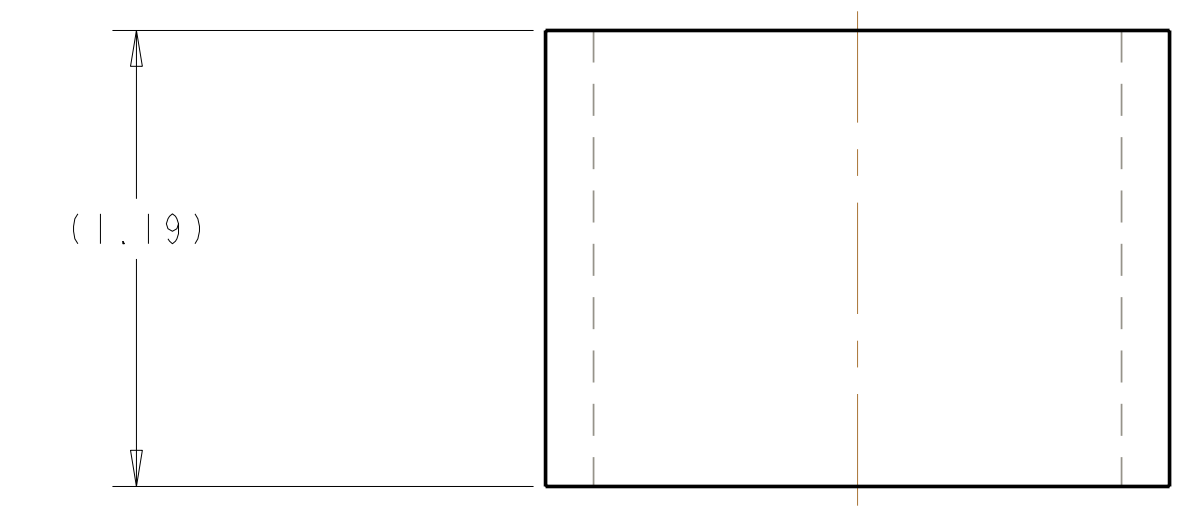
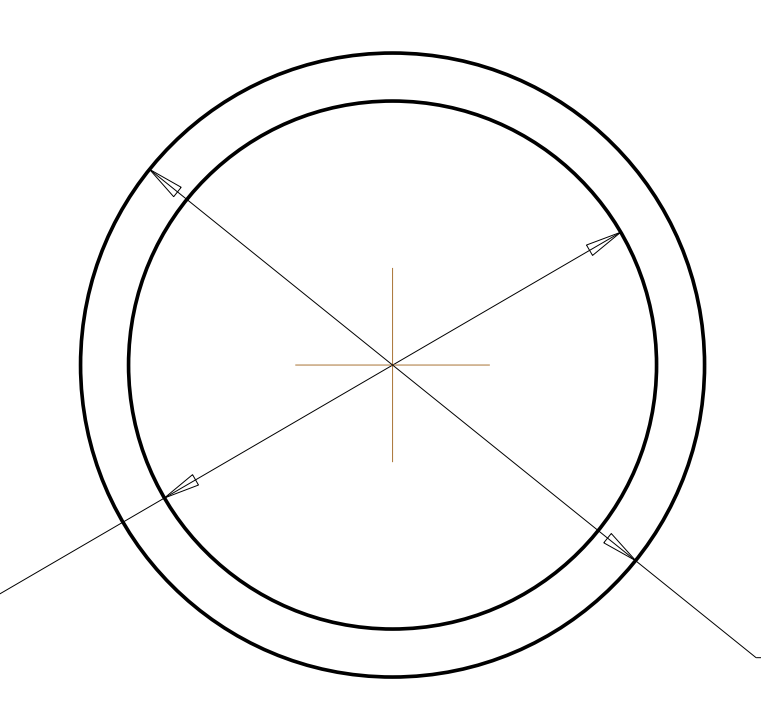
1 MODULAR COIL TYPE-B
 SCALE 0.2



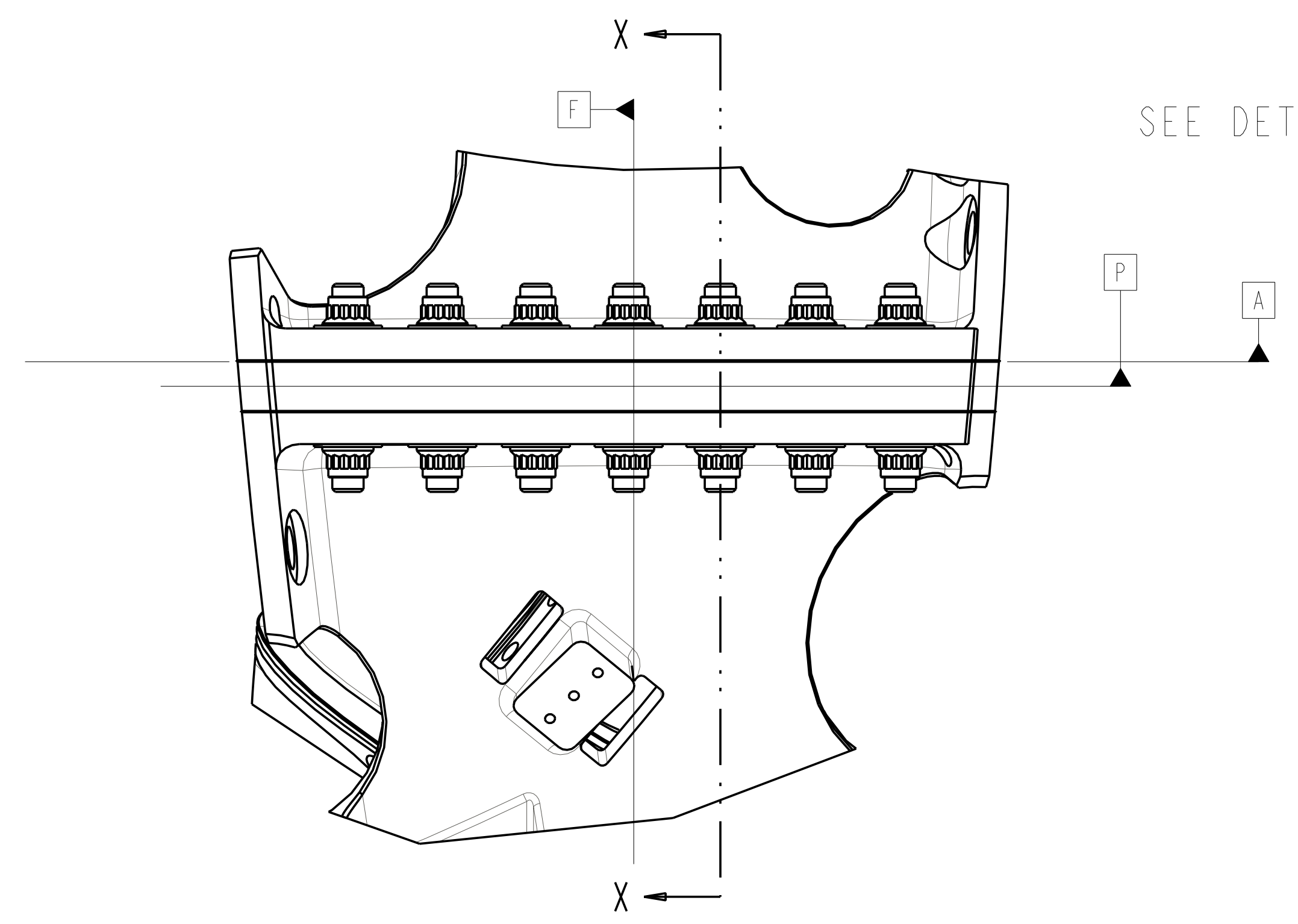
SCALE 0.2



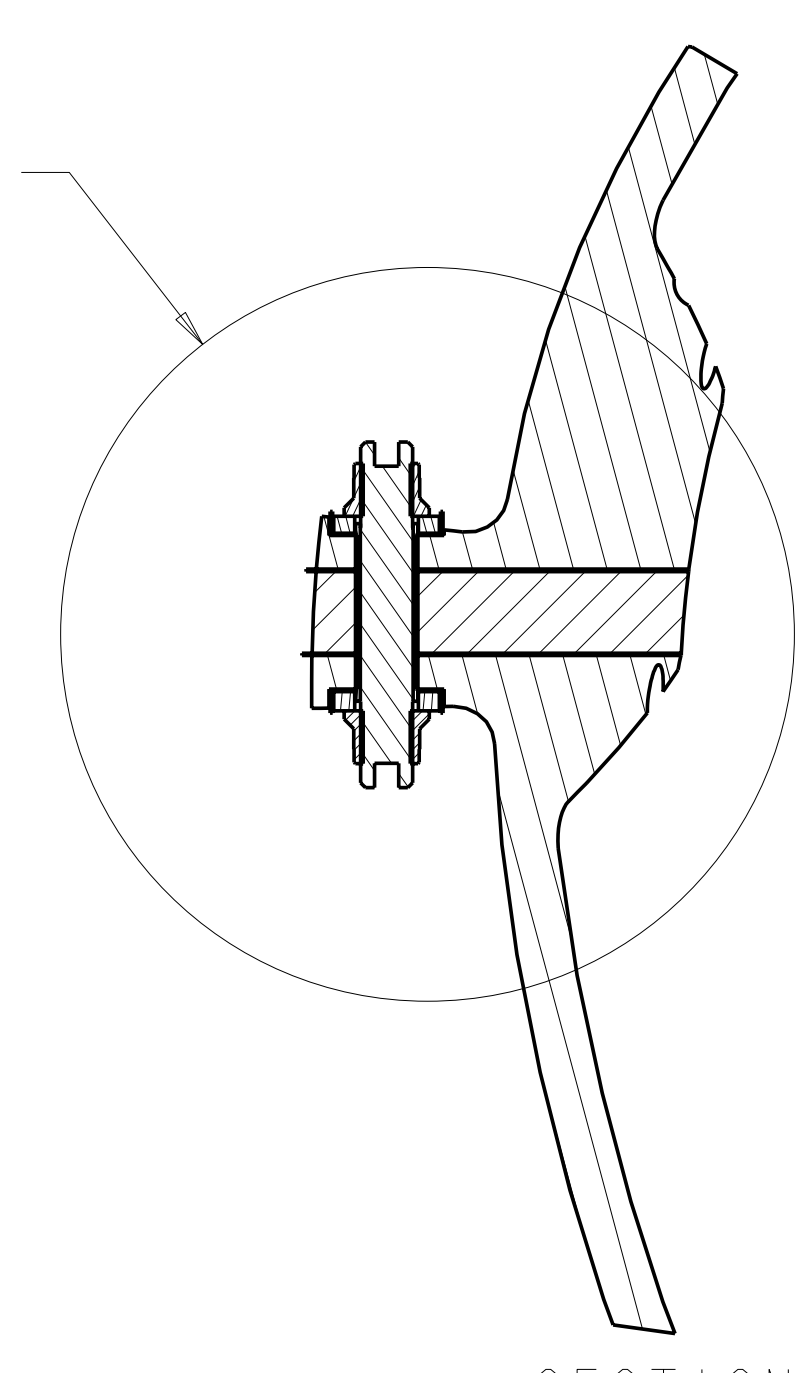
DETAIL B
 SCALE 1.0



5 SCALE 2.00



SEE DETAIL B



SECTION X-X

Oak Ridge National Laboratory managed for the DEPARTMENT OF ENERGY under U.S. GOVERNMENT contract DE-AC05-00OR22725 UT-BATTELLE, LLC, Oak Ridge, Tennessee							
UT-BATTELLE							
NATIONAL COMPACT STELLARATOR EXPERIMENT							
WINDING FORM TYPE-B ASSEMBLY							
VERSION NO.	PLANT	BLDG	FL	SHT OF	TYPE	CLASS	
28	ORNL	5700	3	2	2	A	U
RELEASE LEVEL	SEI41-102						REV
WIP							-

SEI41-102