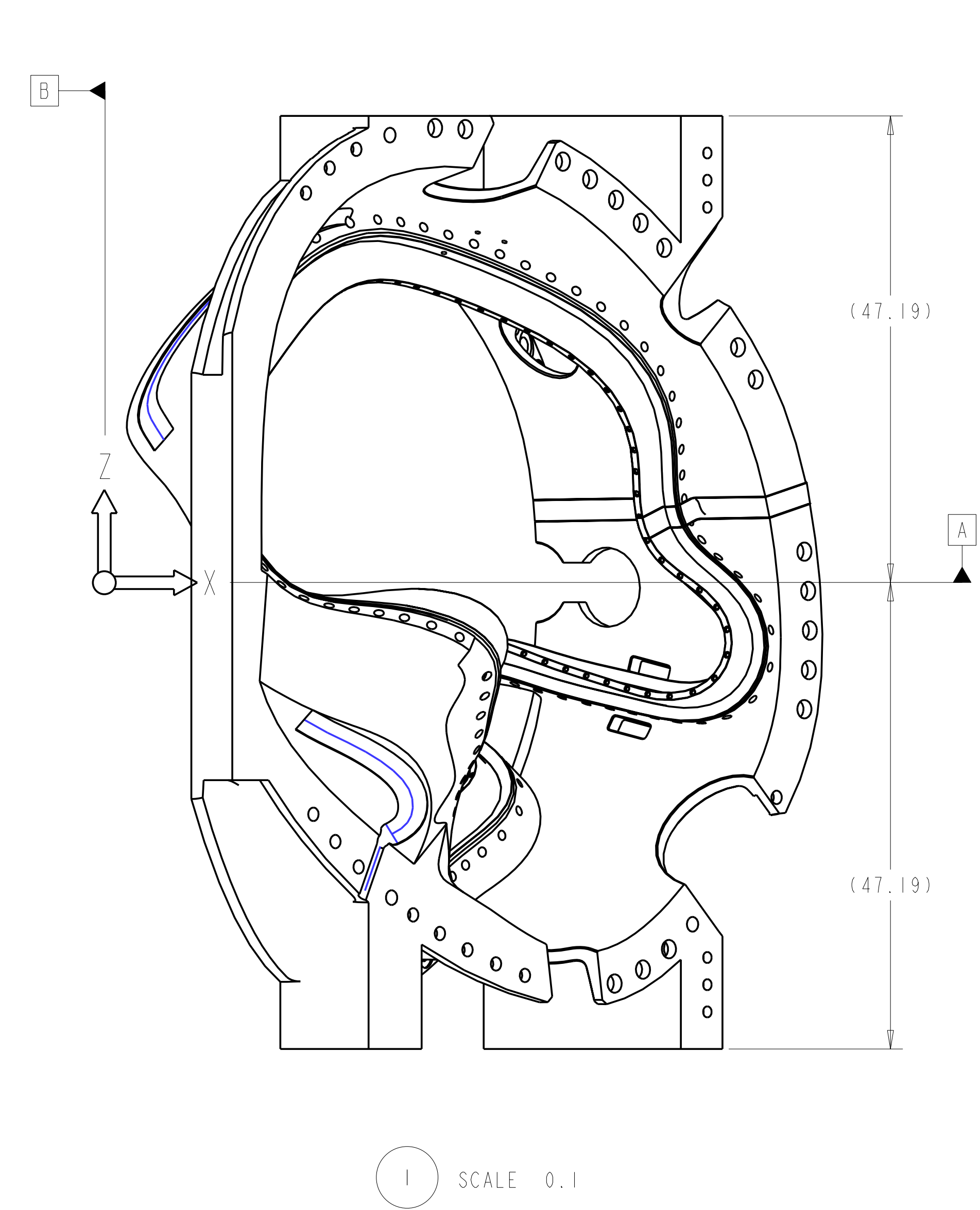
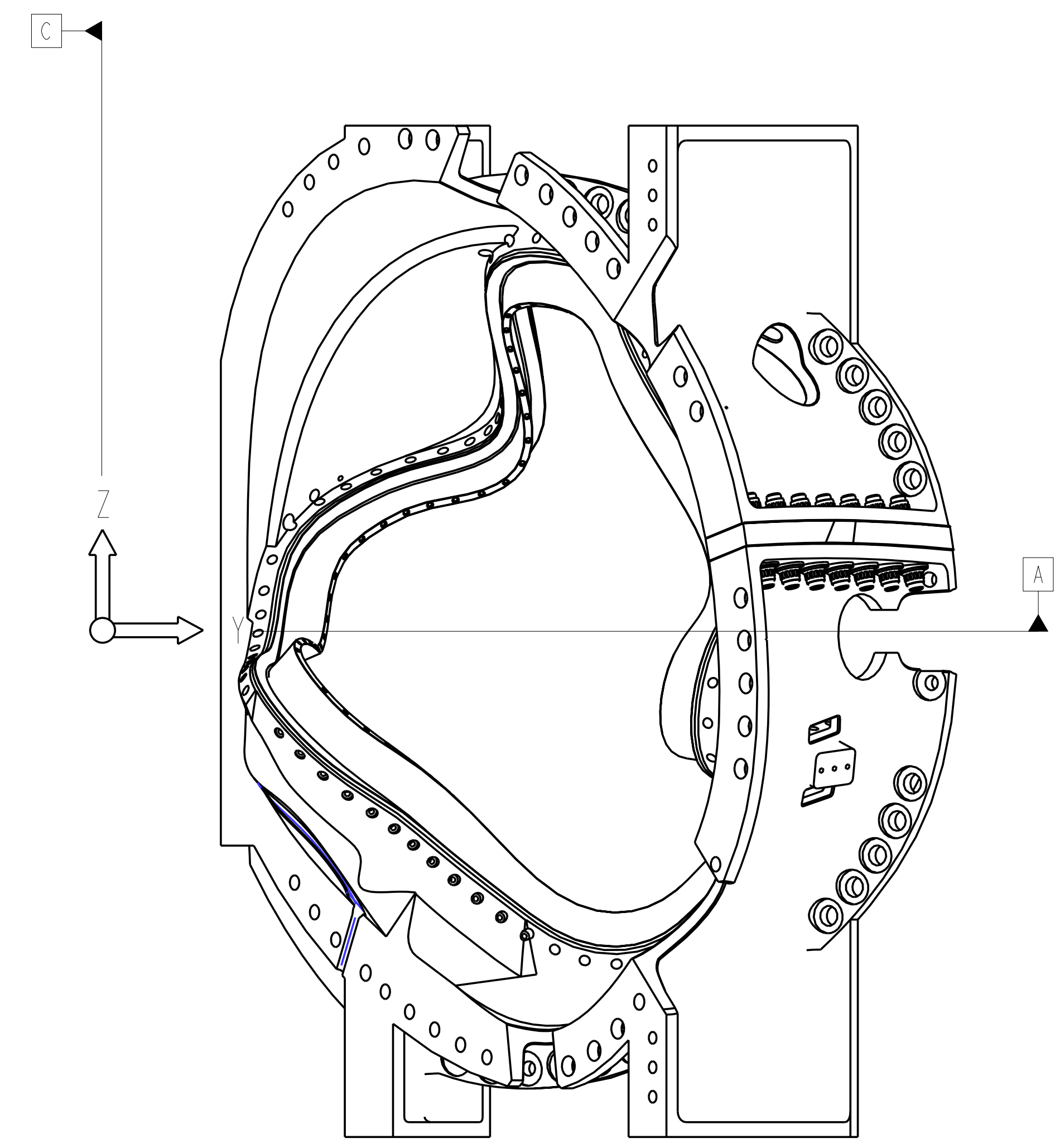


ISOMETRIC VIEW
 SCALE 0.1

- NOTES:
1. DRAWING PREPARED IN ACCORDANCE WITH ASME Y14.8M-1996
 2. INTERPRET DIMENSIONS AND TOLERANCES PER ANSI Y14.5M-1994
 3. DIMENSIONS ARE IN INCHES
 4. DRAWING DEPICTS FINAL MACHINED STATE OF ASSEMBLY DEFINED BY PRO/ENGINEER FILE SEI41-103.PRT
 5. UNLESS OTHERWISE SPECIFIED, DIMENSIONS ARE RELATED TO DATUM A- (PRIMARY X-Y PLANE, TOP) DATUM B- (SECONDARY Y-Z PLANE, SIDE) DATUM C- (TERTIARY X-Z PLANE, FRONT)
 6. DIMENSIONS APPLY AT ROOM TEMPERATURE. OPERATING TEMP 80 K
 7. DIMENSIONS AND TOLERANCES EXCLUDE PROCESS MATERIAL ALLOWANCES WHICH MAY ADD MASS
 8. APPROXIMATE MASS = 5080 LBS
 9. MATCH DRILL OR BEAM TO ACHIEVE RUNNING FIT BETWEEN PARTS AND ASSEMBLY
 10. LUBRICATE THREADED SURFACES WITH MOLYCOTE 321R PER MANUFACTURER'S INSTRUCTIONS
 11. SEE SPECIFICATION, NCSX-CSPEC-141-03-00, FOR ADDITIONAL REQUIREMENTS
 12. BOND INSULATING SLEEVE (F/N 5) TO WINDING FORM (F/N 2) USING LOCTITE 411 PER MANUFACTURER'S INSTRUCTIONS



SCALE 0.1



QTY	DESCRIPTION	MATERIAL	SPECIFICATION	FIND NO
14	-9 NUT, 12PT HEX, 1-3/8-6 UNC-2B	A-286 SILVER PLATED	MIL-DTL-25027, AMS 2410	9
14	-8 WASHER, 2.75 OD X 1.66 ID X .5 THK	A286	DS141-079	8
7	-7 STUD, 1-3/8-6 UNC-2A	A286	DS141-036	7
14	-6 INSULATING WASHER	G11CR	DS141-038	6
14	-5 INSULATING SLEEVE	G11CR	NEMA LI 1 - 1998	5
2	-4 INSULATING SHEET .062 +/- .0075 THK	G11CR	NEMA LI 1 - 1998	4
1	SEI41-078	POL BREAK SHIM ASSEMBLY TYPE-C		3
1	SEI41-116	PRODUCTION WINDING FORM TYPE-C		2
AR	X -1	WINDING FORM TYPE-C ASSEMBLY		1

← CAGE CODE PART OR IDENTIFYING NO NOMENCLATURE OR DESCRIPTION MATERIAL SPECIFICATION FIND NO
 ← NEXT ASSEMBLY PARTS LIST

FOR INFORMATION ONLY
 NOT APPROVED FOR FABRICATION

NO REPRESENTATION OR WARRANTY, EXPRESSED OR IMPLIED, IS MADE AS TO THE ACCURACY, COMPLETENESS OR USEFULNESS OF THE INFORMATION OR STATEMENTS CONTAINED IN THESE DRAWINGS, OR THAT THE USE OR DISCLOSURE OF ANY INFORMATION, APPARATUS, METHOD OR PROCESS DISCLOSED IN THESE DRAWINGS MAY NOT INFRINGE PRIVATE RIGHTS OF OTHERS. NO LIABILITY IS ASSUMED WITH RESPECT TO THE USE OF, OR FOR DAMAGES RESULTING FROM THE USE OF, ANY INFORMATION, APPARATUS, METHOD OR PROCESS DISCLOSED IN THESE DRAWINGS. DRAWINGS MADE AVAILABLE FOR INFORMATION TO BIDDER ARE NOT TO BE USED FOR OTHER PURPOSES, AND ARE TO BE RETURNED UPON REQUEST OF THE FORWARDING CONTRACTOR.

P THIS DRAWING PRODUCED ON PRO-ENGINEER

REV	DESCRIPTION	BY	DATE	CHK	DEPT	DATE	PE	REQ	DATE	ORNL	DOE	DATE

SCALE NOTED
 TOLERANCES UNLESS OTHERWISE SPECIFIED
 FRACTIONS ±.01
 XX DECIMALS ±.005
 XXX DECIMALS ±.0015
 ANGLES ±0°15'
 BREAK SHARP EDGES .06 MAX
 FINISH .125 UNLESS OTHERWISE SPECIFIED

DES T BROWN 6-30-04
 DRW PAUL MILLER 6-30-04
 CHK M COLE 6-30-04
 SECT :
 DEPT :
 PE D WILLIAMSON 6-30-04
 CR :
 PJ :
 REO :
 PPPL DRFT J SIEGEL 6-30-04

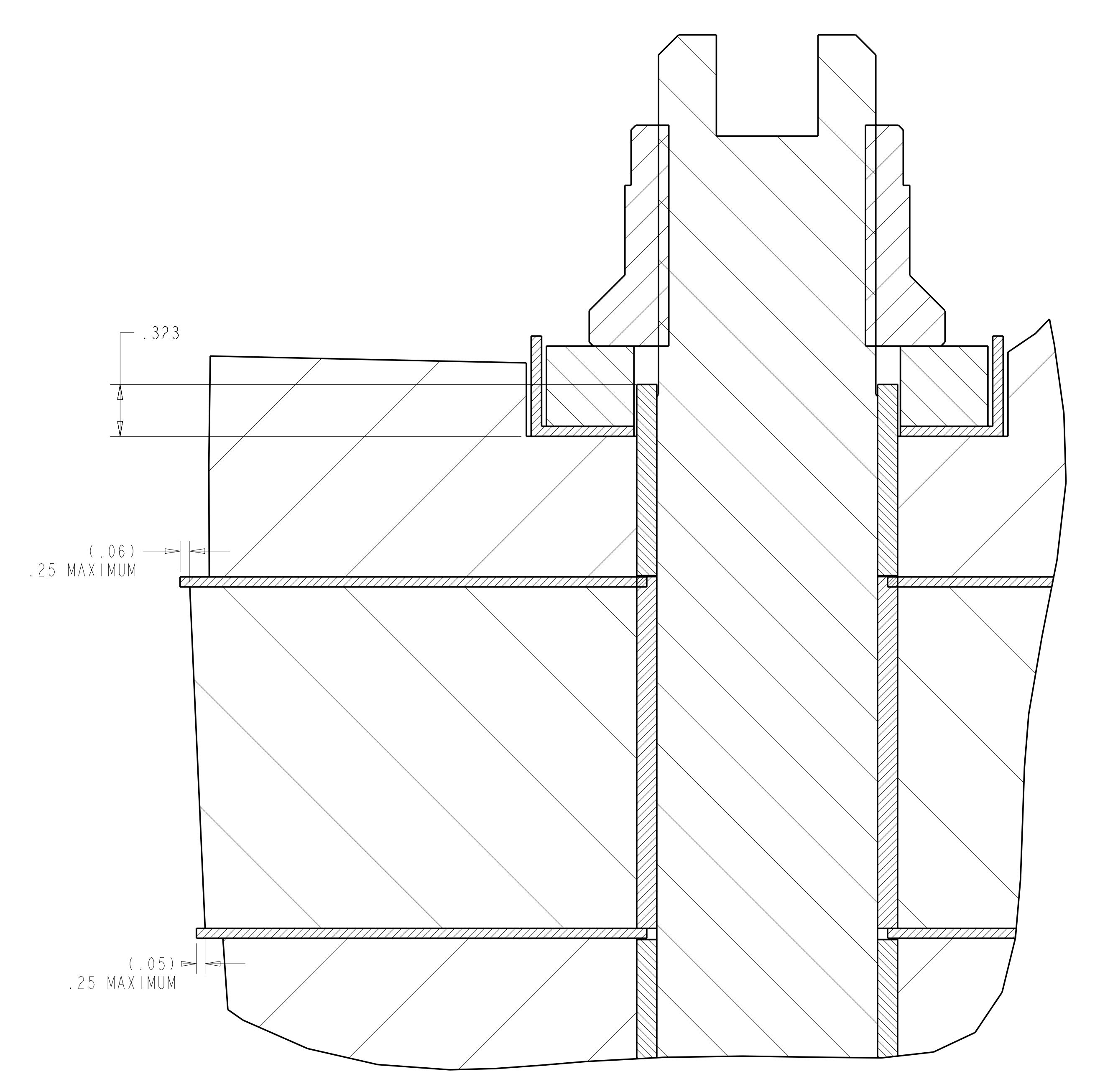
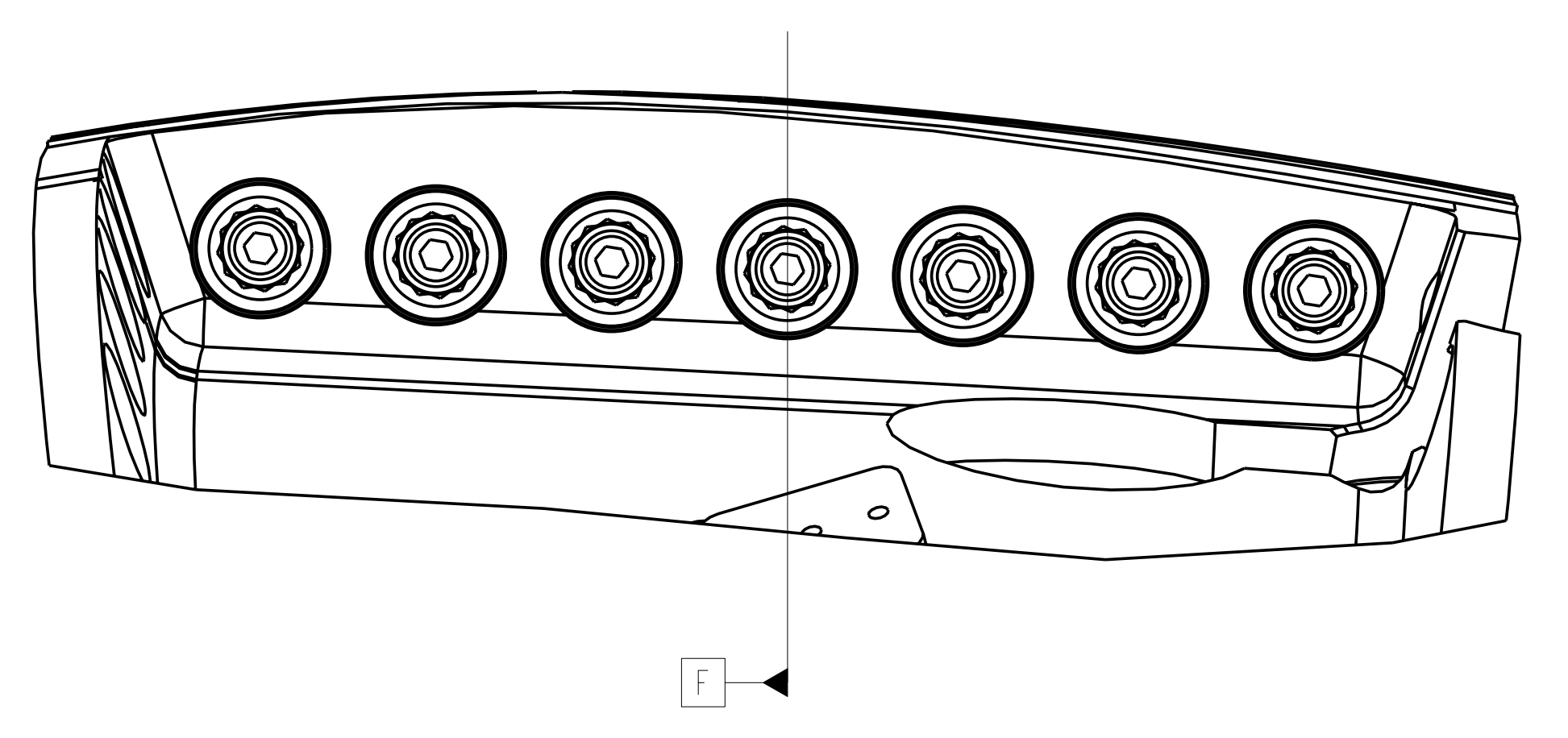
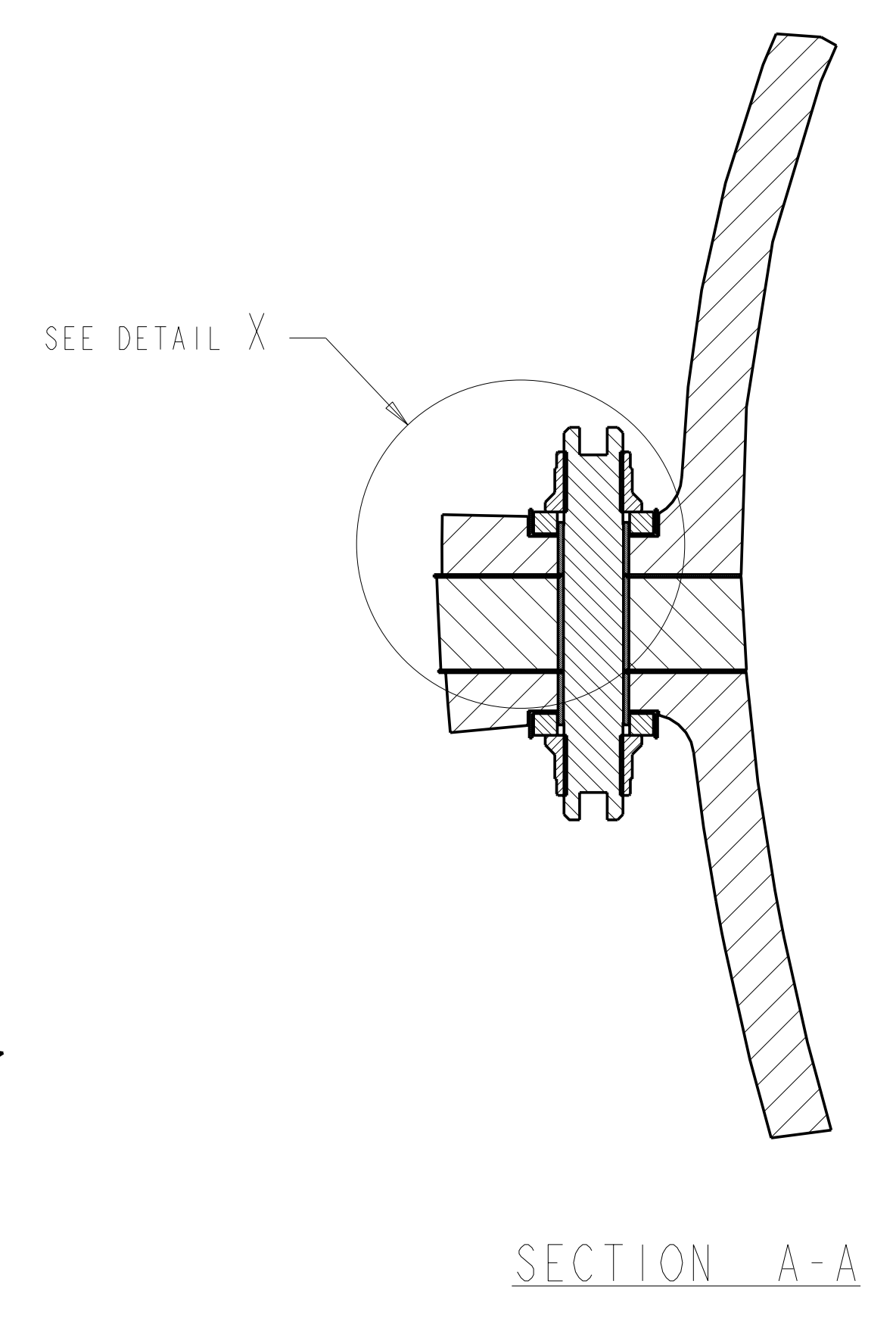
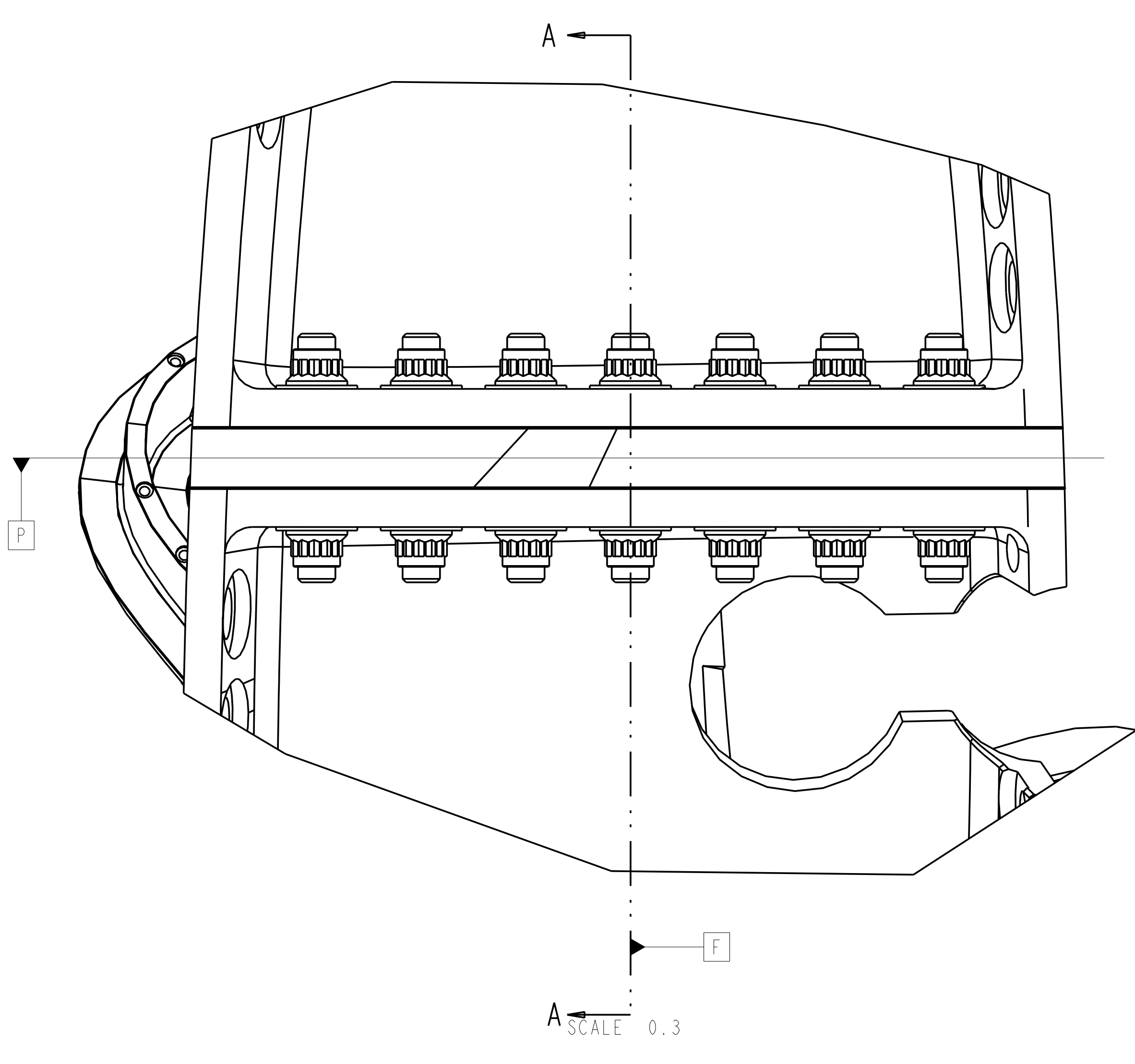
UT-BATTELLE
 Oak Ridge National Laboratory managed for the DEPARTMENT OF ENERGY under U.S. GOVERNMENT contract DE-AC05-00OR22725 UT-BATTELLE, LLC. Oak Ridge, Tennessee
 PROJECT NAME
NATIONAL COMPACT STELLARATOR EXPERIMENT
WINDING FORM TYPE "C" ASSEMBLY

VERSION NO.	PLANT	BLDG	FL	SHT OF	TYPE	CLASS
16	ORNL	5700	3	1	2	S U

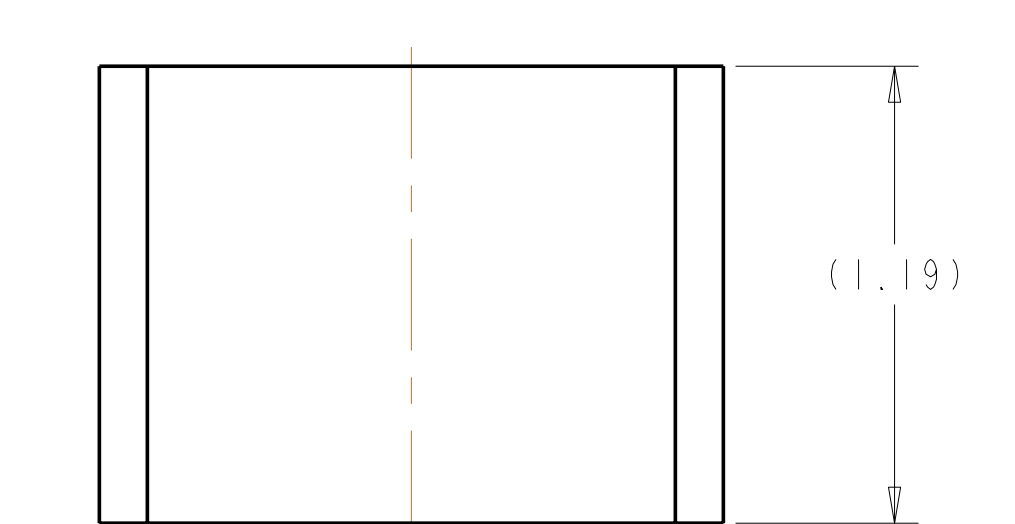
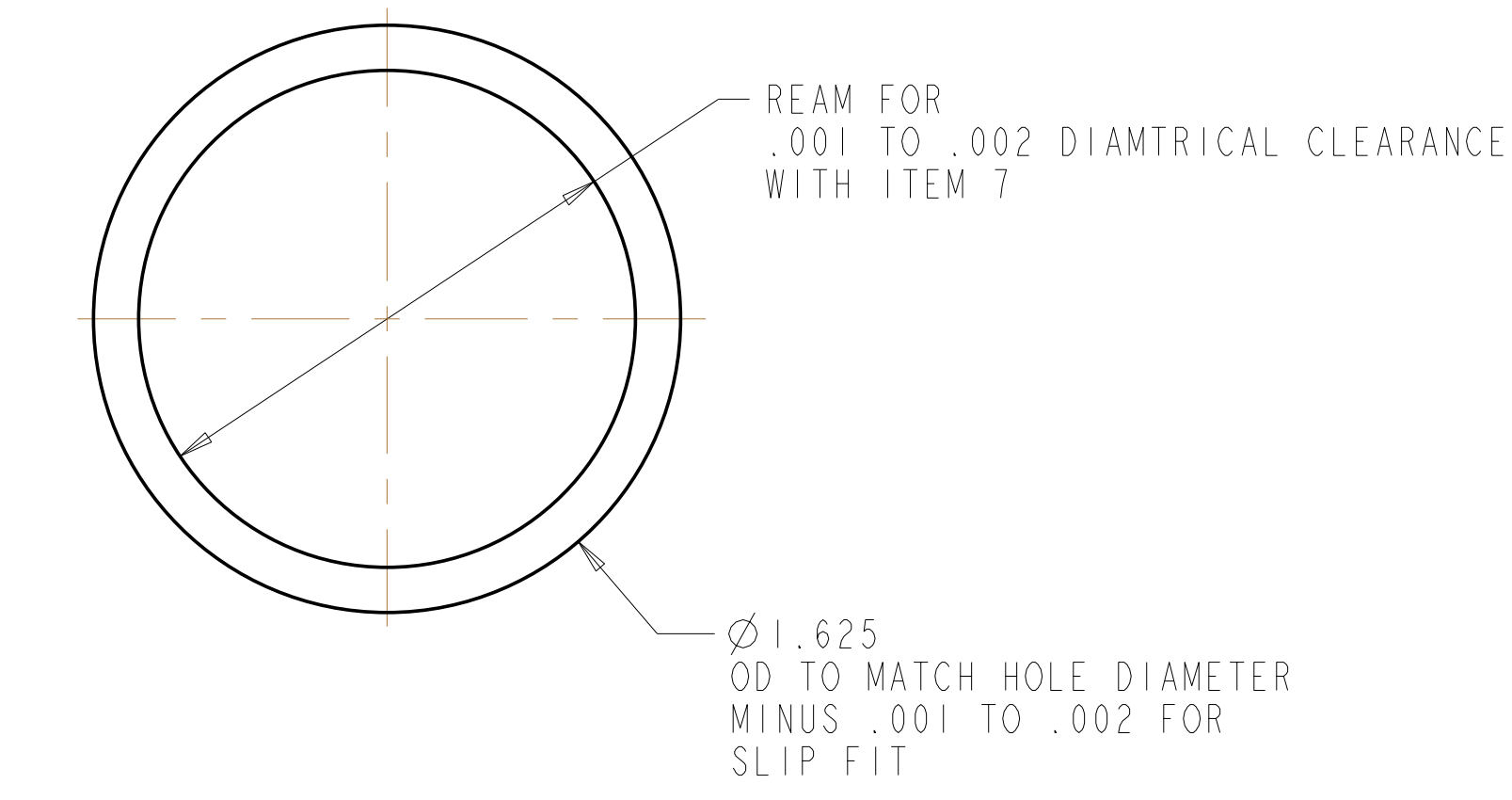
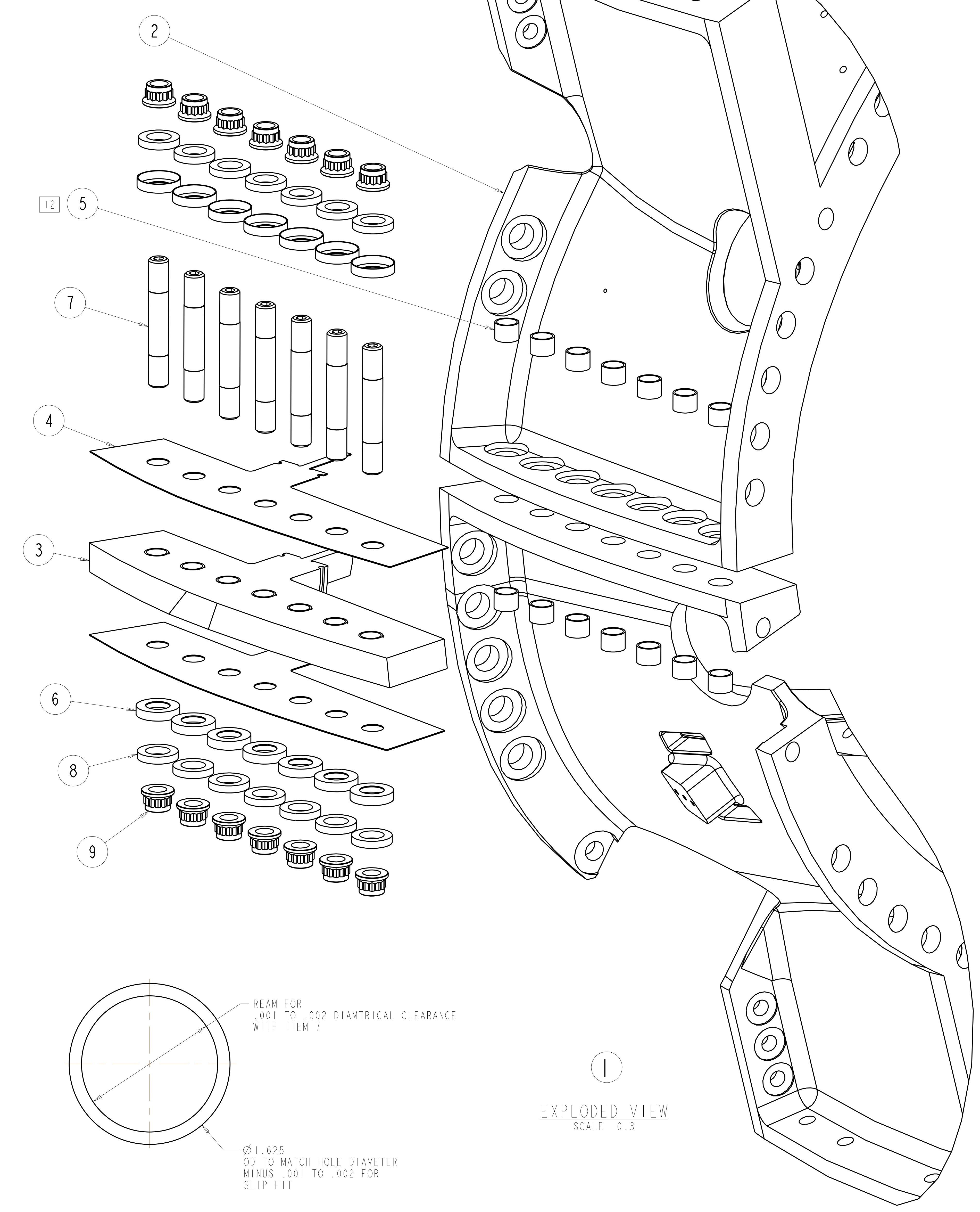
RELEASE LEVEL
 WIP

SEI41-103

H
G
F
E
D
C
B
A



DETAIL X
SCALE 2



5 SCALE 2

Oak Ridge National Laboratory managed for the DEPARTMENT OF ENERGY under U.S. GOVERNMENT contract DE-AC05-00OR22725 UT-BATTELLE, LLC, Oak Ridge, Tennessee PROJECT TITLE							
UT-BATTELLE NATIONAL COMPACT STELLARATOR EXPERIMENT							
WINDING FORM TYPE "C" ASSEMBLY							
VERSION NO.	PLANT	BLDG	FL	SHT OF	TYPE	CLASS	
44	ORNL	5700	3	2	2	S	U
RELEASE LEVEL							REV
WIP	SEI41-103						-

H
G
F
E
D
C
B
A

SEI41-103