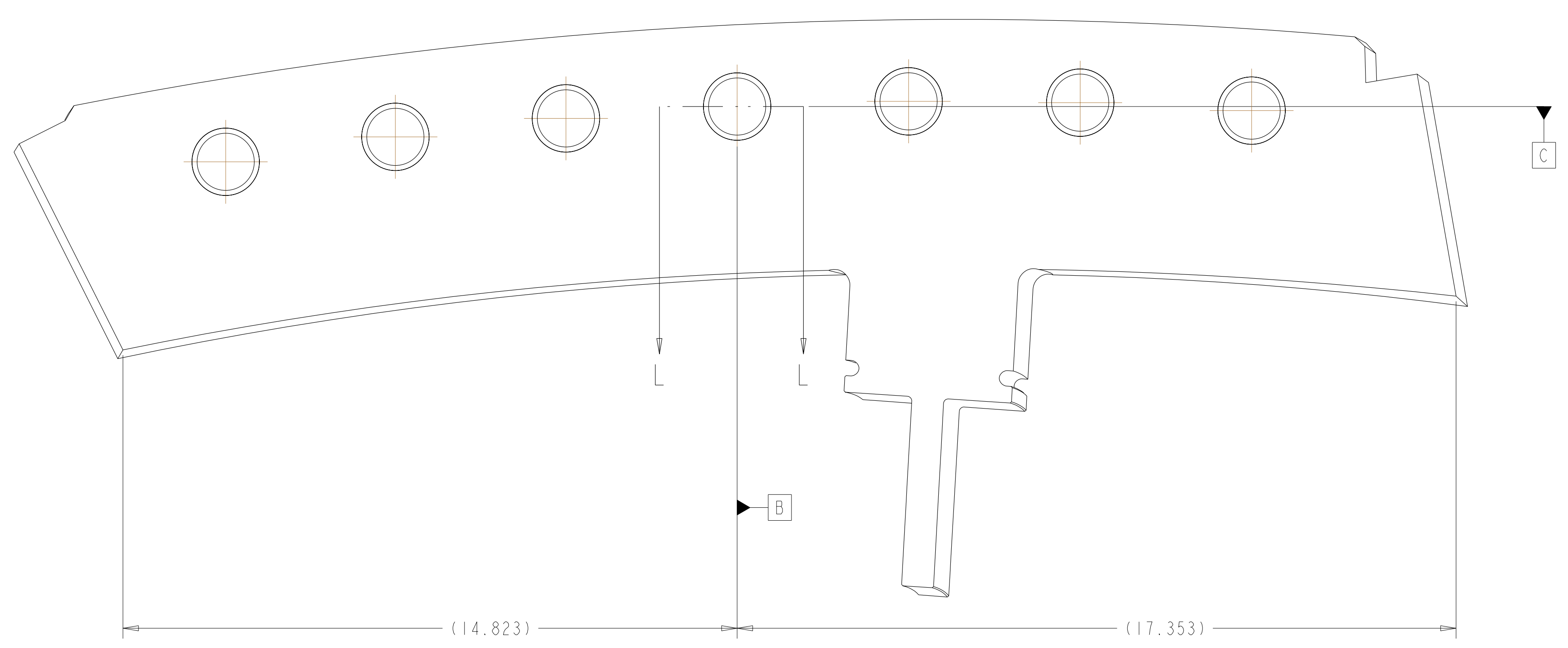
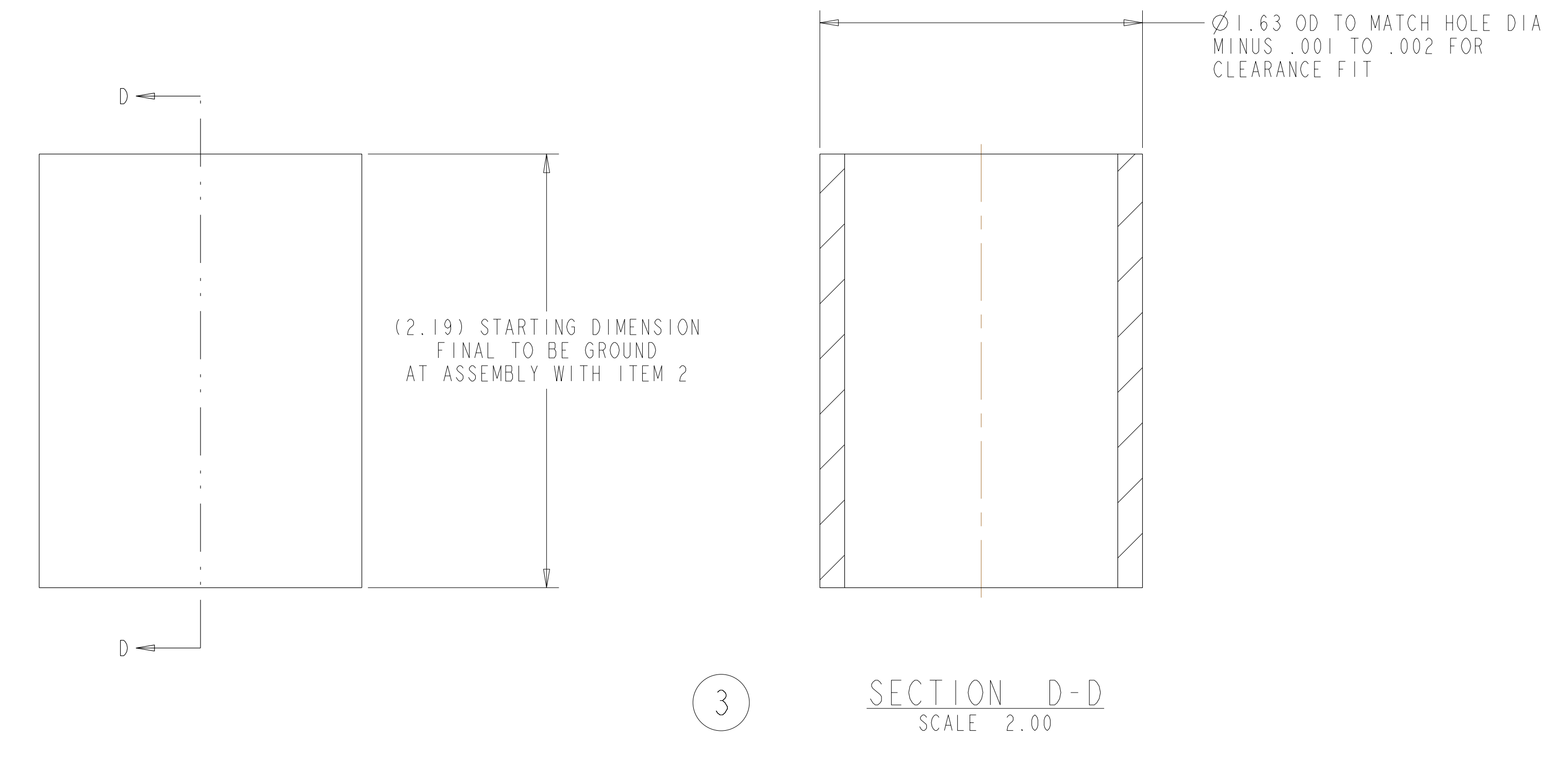
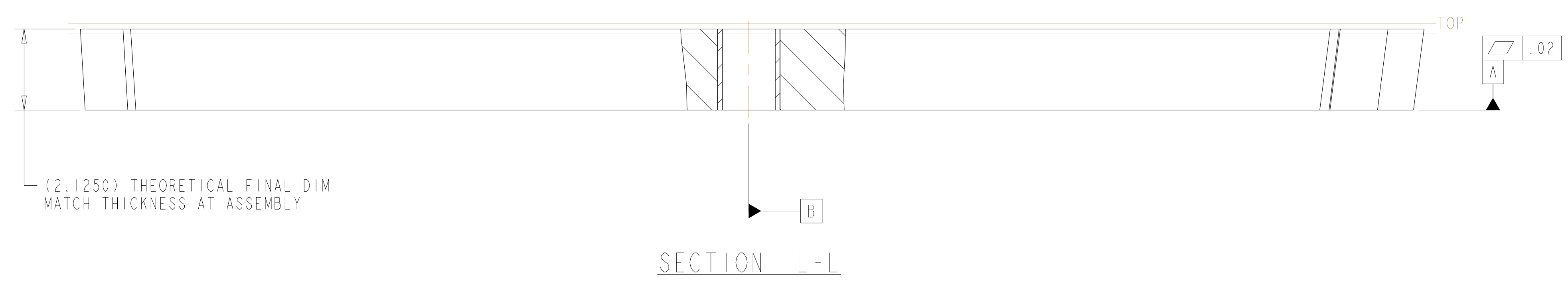
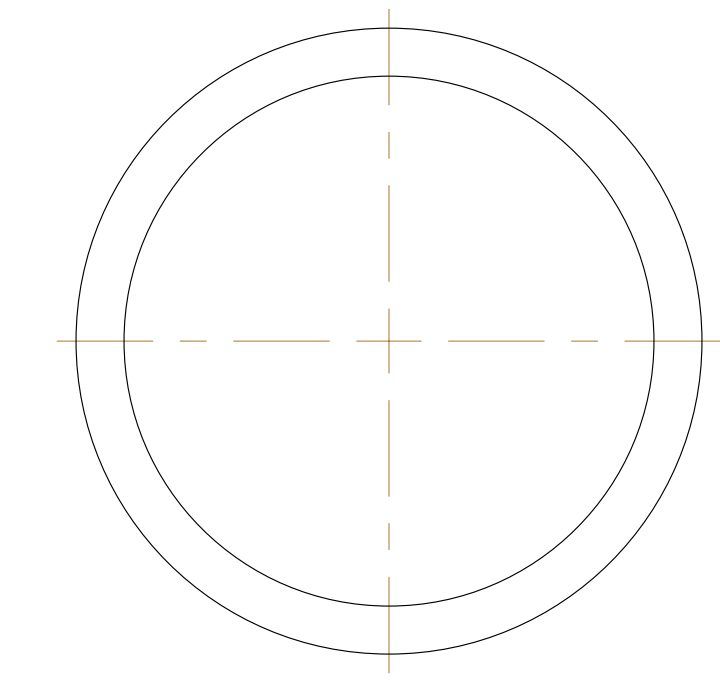
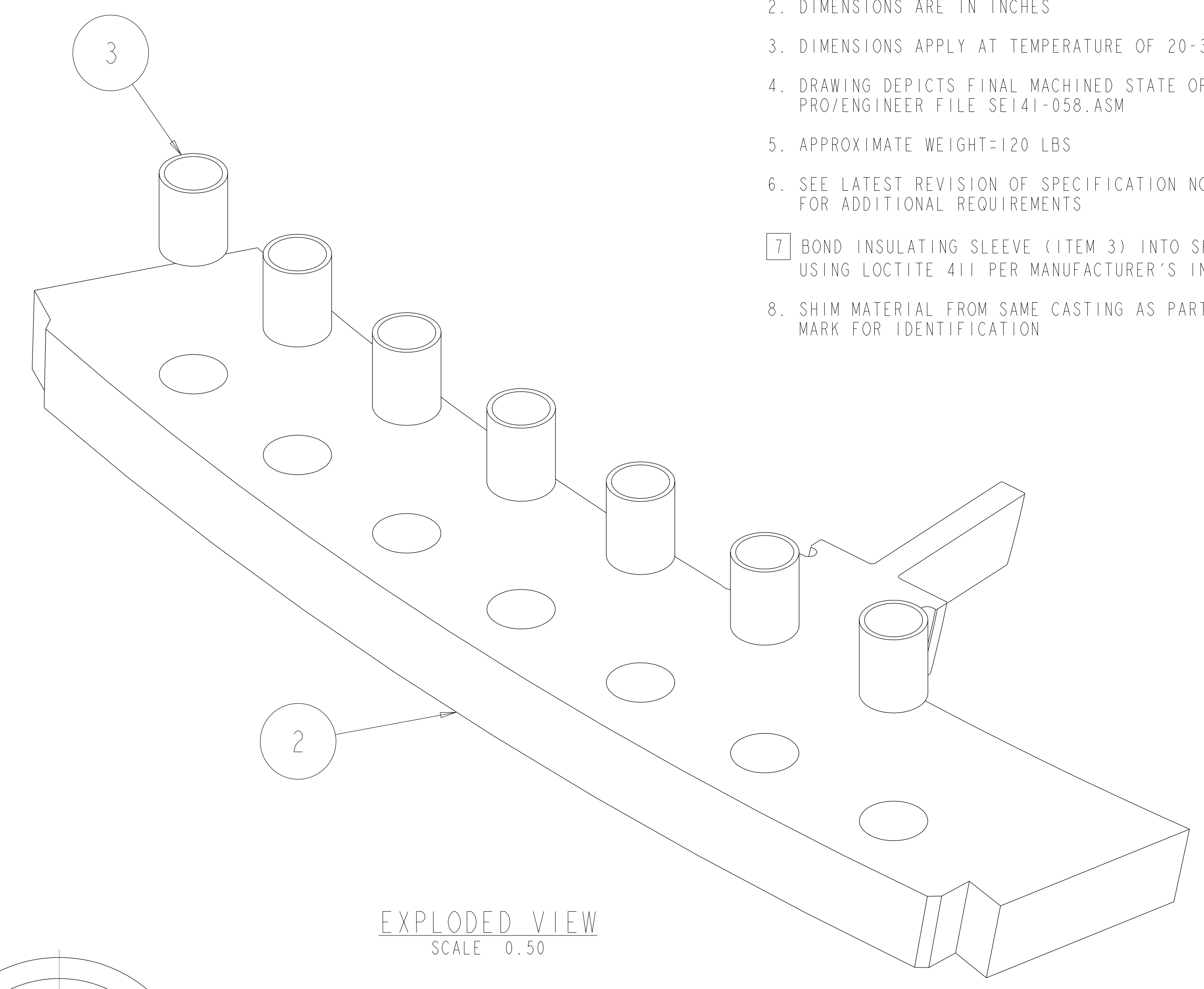
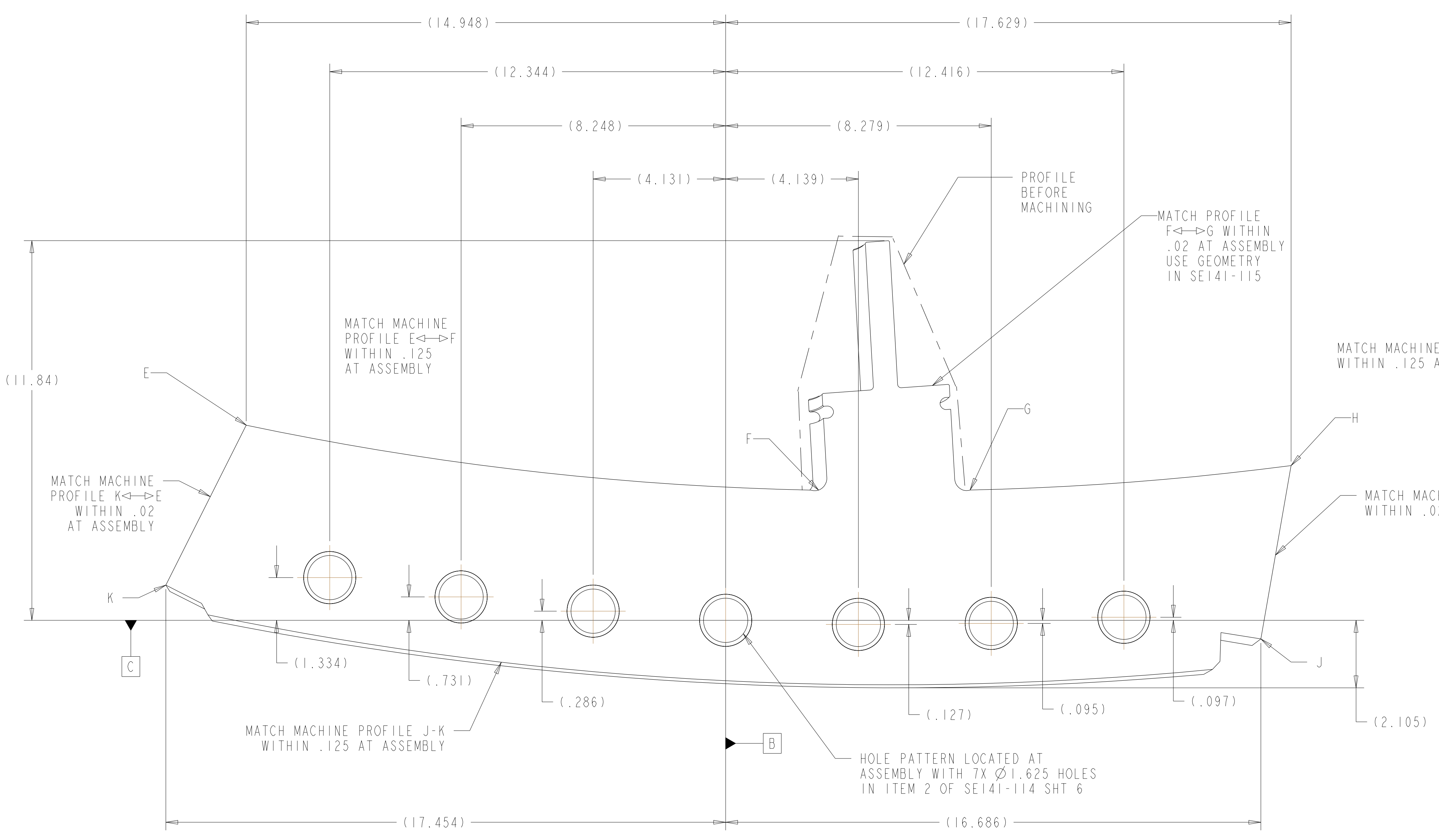


- NOTES:**
1. INTERPRET DIMENSIONS AND TOLERANCES PER ANSI Y14.5M
 2. DIMENSIONS ARE IN INCHES
 3. DIMENSIONS APPLY AT TEMPERATURE OF 20-30°C (68-86°F)
 4. DRAWING DEPICTS FINAL MACHINED STATE OF ASSEMBLY DEFINED BY PRO/ENGINEER FILE SE141-058.ASM
 5. APPROXIMATE WEIGHT=120 LBS
 6. SEE LATEST REVISION OF SPECIFICATION NCSX-CSPEC-141-03 FOR ADDITIONAL REQUIREMENTS
 7. BOND INSULATING SLEEVE (ITEM 3) INTO SHIM (ITEM 2) USING LOCTITE 411 PER MANUFACTURER'S INSTRUCTIONS
 8. SHIM MATERIAL FROM SAME CASTING AS PART SE141-115; MARK FOR IDENTIFICATION



SCALE 0.50

7	-3	SHIM INSULATING SLEEVE ALL TYPES	GIICR	NEMA LI 1 - 1998	3
I	-2	POLOIDAL BREAK SHIM TYPE-B	NOTE 8	--	2
AR	X	-1	POL BREAK SHIM ASSEMBLY TYPE-B		
SE141-058	201-11435	CAGE CODE	PART OR IDENTIFYING NO	NOMENCLATURE OR DESCRIPTION	MATERIAL
					SPECIFICATION
					FIND NO
					PARTS LIST

SCALE NOTED		DES: T BROWN	6-30-04	UT-BATTELLE		Oak Ridge National Laboratory managed for the DEPARTMENT OF ENERGY under U.S. GOVERNMENT contract DE-AC05-00OR22725 UT-BATTELLE, LLC, Oak Ridge, Tennessee	
TOLERANCES UNLESS OTHERWISE SPECIFIED		DRW: PAUL MILLER	6-30-04	NATIONAL COMPACT STELLARATOR EXPERIMENT		POL BREAK SHIM ASSEMBLY TYPE-B	
FRACTIONS		CHK: M COLE	6-30-04	PPPL DRFT: J SIEGEL		6-30-04	VERSION NO. 2
XX DECIMALS ±.01		PE: D WILLIAMSON	6-30-04	PLANT X-10		BLDG 5700	FL 3
XXX DECIMALS ±.005		CR: J		SHT OF 1		TYPE I	CLASS S
ANGLES ±0°15'		PJ: J		RELEASE LEVEL		SE141-058	
BREAK SHARP EDGES .06 MAX		REQ: J		DRAWING APPROVALS		REV 1	
FINISH .125 UNLESS OTHERWISE SPECIFIED		REV: J		DATE		FABRICATION	
1	REVISED "T" PROFILE PER ECN-4903	GLL	9/04	MJC	DEW		
REV	DESCRIPTION	BY	DATE	CHK	DEPT	DATE	PE
	REVISION OR ISSUE PURPOSE						REVISION APPROVAL

NO REPRESENTATION OR WARRANTY, EXPRESSED OR IMPLIED, IS MADE AS TO THE ACCURACY, COMPLETENESS OR USEFULNESS OF THE INFORMATION OR STATEMENTS CONTAINED IN THESE DRAWINGS, OR THAT THE USE OR DISCLOSURE OF ANY INFORMATION, APPARATUS, METHOD OR PROCESS DISCLOSED IN THESE DRAWINGS MAY NOT INFRINGE PRIVATE RIGHTS OF OTHERS. NO LIABILITY IS ASSUMED WITH RESPECT TO THE USE OF, OR FOR DAMAGES RESULTING FROM THE USE OF, ANY INFORMATION, APPARATUS, METHOD OR PROCESS DISCLOSED IN THESE DRAWINGS. DRAWINGS MADE AVAILABLE FOR INFORMATION TO BIDDER ARE NOT TO BE USED FOR OTHER PURPOSES, AND ARE TO BE RETURNED UPON REQUEST OF THE FORWARDING CONTRACTOR.

P THIS DRAWING PRODUCED ON PRO-ENGINEER

H
G
F
E
D
C
B
A