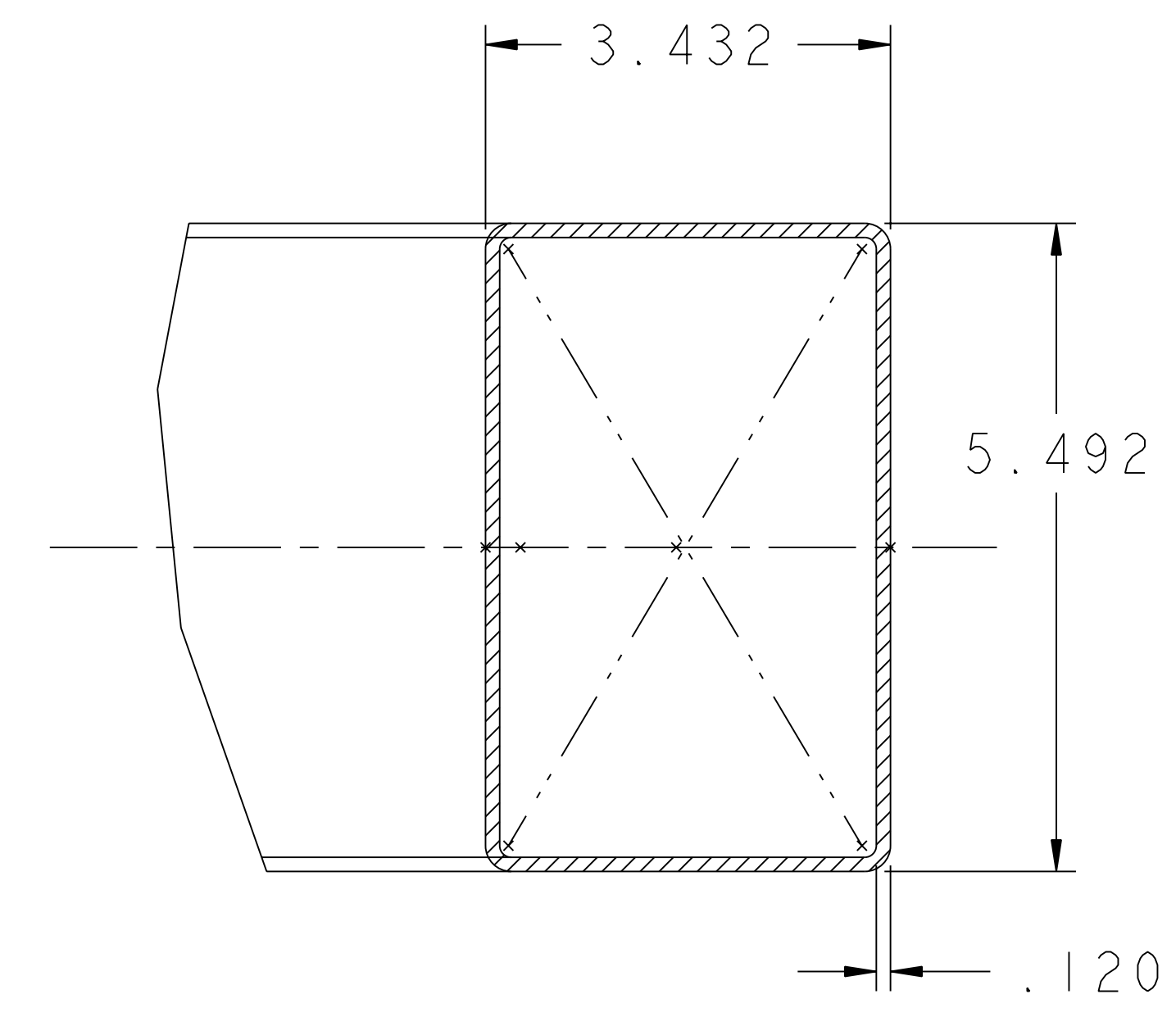
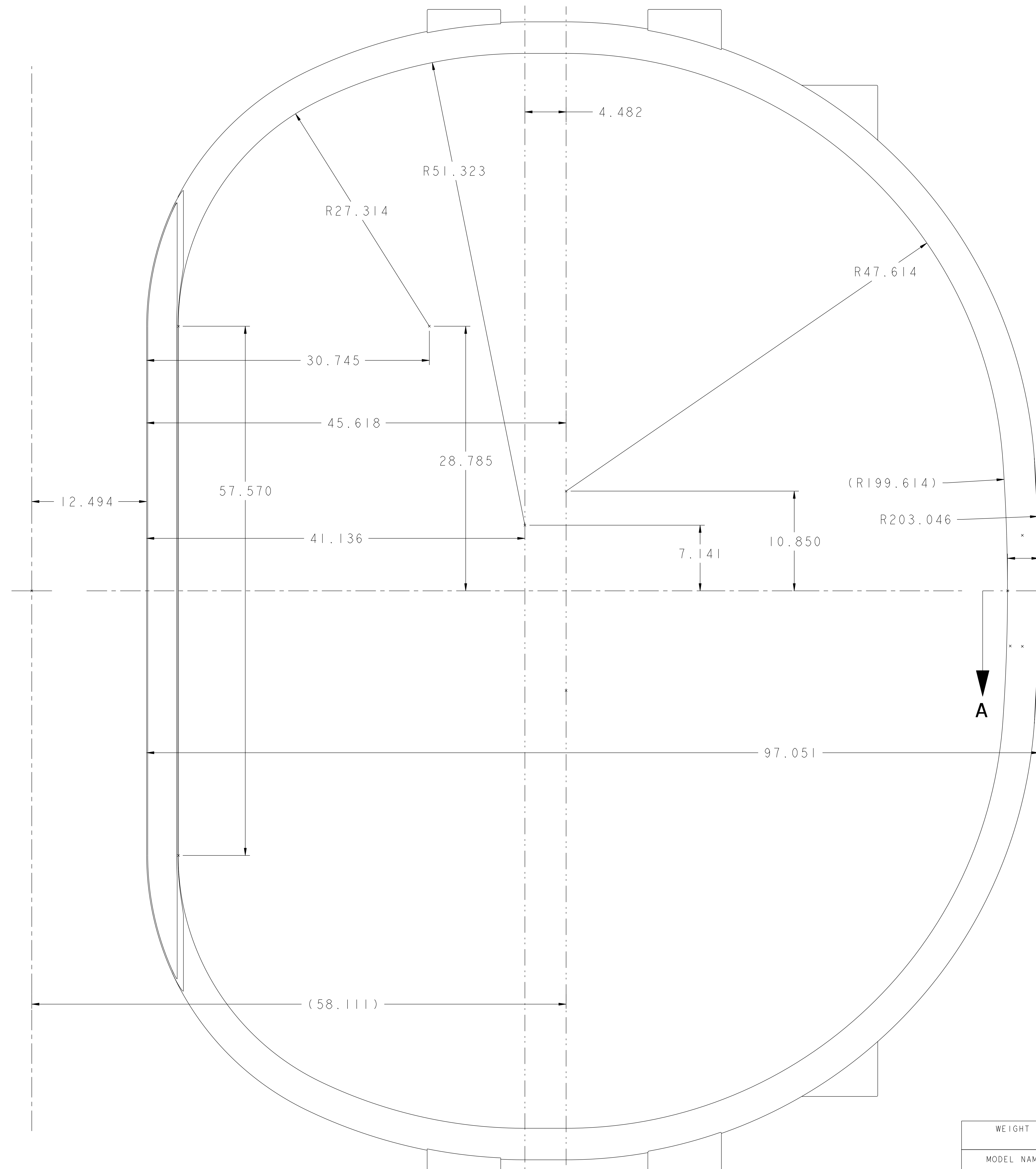


NO.	REVISION	BY	CH	SUP	APPROVED	DATE

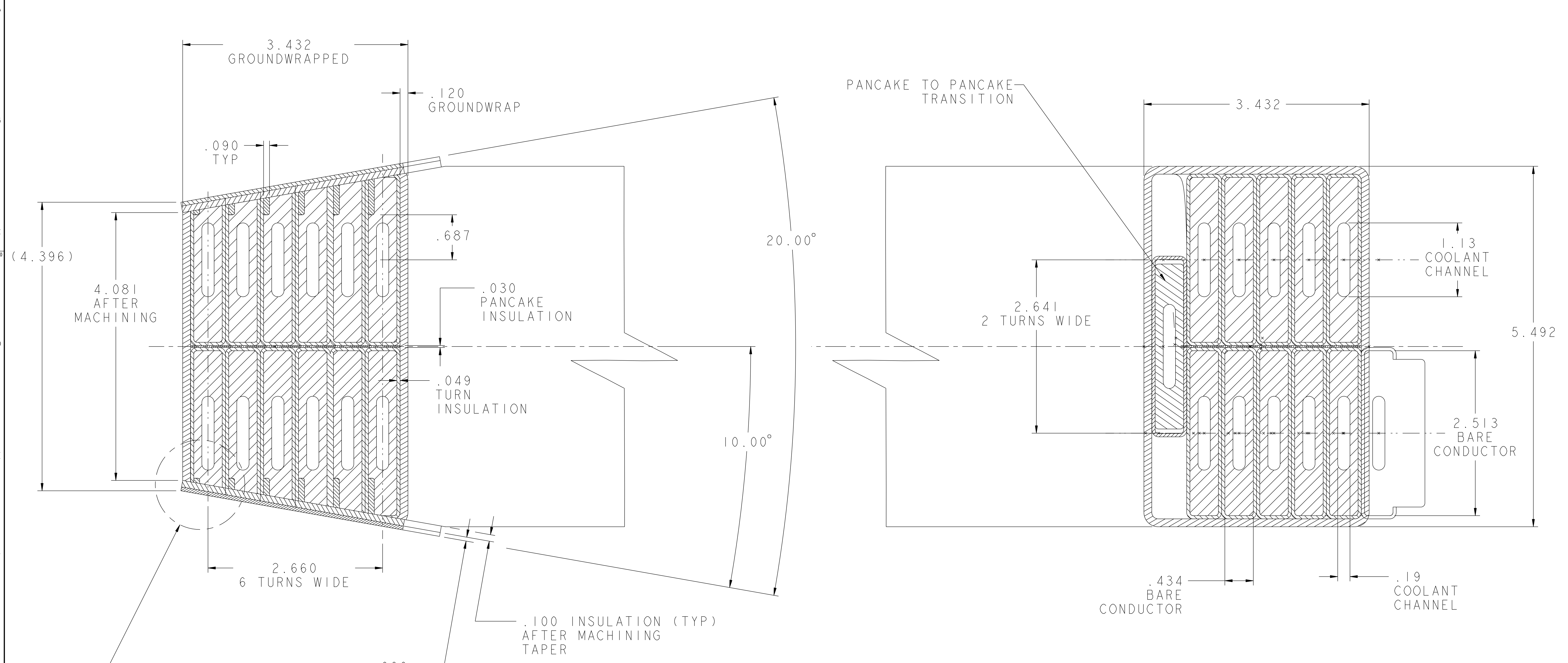


SECTION A-A
SCALE 0.750

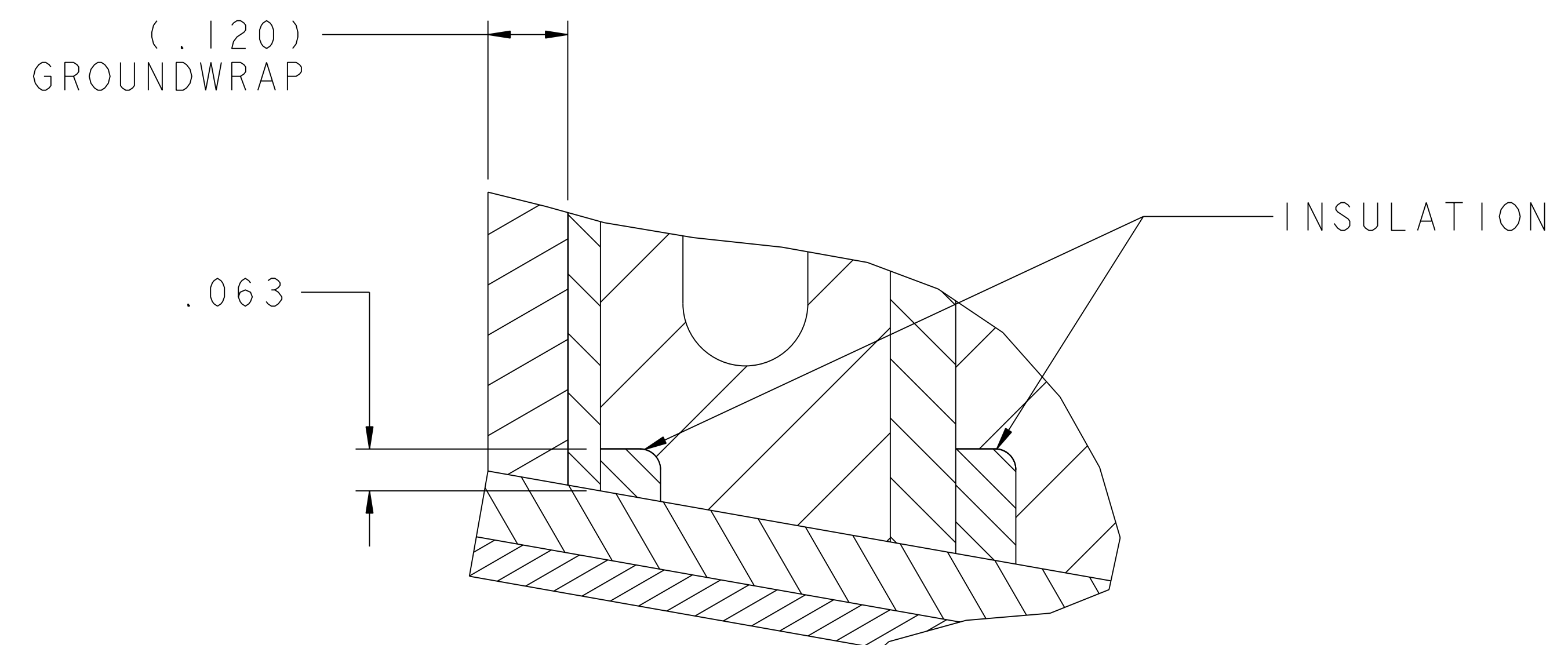
DIMENSIONS SHOWN
INDICATE FINISHED
GROUNDWRAPPED COIL

4	SE131-046	TF COIL NOSE AREA INSULATION	KAPTON/DRY GLASS TAPE 2	
3	SE131-044	TF COIL NOSE AREA INSULATING SHEET	KAPTON/DRY GLASS TAPE 2	
2	SE131-011	TF COIL TAPER INSULATING SHEET	G-10 I	
1	SE131-075	TF COIL ASSEMBLY UNMACHINED TAPER	COPPER/INSULATION I	
PART NO.	DRAWING NO	NOMENCLATURE OR DESCRIPTION	MATERIAL	QTY RECD
PARTS LIST				
COMPUTER GENERATED DRAWING MANUAL CHANGES NOT PERMITTED		CENTRAL FILES: UNLESS OTHERWISE SPECIFIED	PRINCETON PLASMA PHYSICS LABORATORY PRINCETON UNIVERSITY	
Pro E		DIMENSIONS ARE IN INCHES MACHINE SURFACES	NATIONAL COMPACT STELLARATOR EXPERIMENT	
DO NOT VERIFY INFORMATION BY SCALING DRAWING		BREAK SHARP EDGES .005/.020	STELLARATOR CORE CONVENTIONAL COILS TF COIL GEOMETRY	
WEIGHT		TOLERANCES NON-CUMULATIVE	DSN: J. RUSHINSKI	DRAWING NO:
MODEL NAME SE131-009		DECIMAL-INCH FRACTIONS	CHK:	SE131-009
NEXT ASSEMBLY		.XX +/- .000 0°-120° +/- 15.0°	ENGR: M. KALISH	SHEET 1 OF 3
WELDING ENGINEER		.XXX +/- .005 72°-120° +/- 15.0°	SUPV:	REV
RELEASE LEVEL: DWG VERSION NO:		ANGULAR +/- 0°-15° OVER 120° +/- 15.0°	NCSX-ASSY-FORMAT.E	

NCSX-SE131-009



**SECTION A-A
FINISHED MACHINED COIL
AT HORIZONTAL MIDPLANE
SCALE 1.750**



**DETAIL "Z"
SCALE 6.000**

NOTE
1. COPPER TO BE OFHC CDA 104,
CDA 105, OR CDA 107
SILVER BEARING

18 ASSEMBLIES REQ'D

1	SE131-075	TF COIL ASSEMBLY UNMACHINED TAPER	COPPER/INSULATION	1
PART NO.	DRAWING NO	NOMENCLATURE OR DESCRIPTION	MATERIAL	QTY REOD
PARTS LIST				
COMPUTER GENERATED DRAWING MANUAL CHANGES NOT PERMITTED	CENTRAL FILES: UNLESS OTHERWISE SPECIFIED	PRINCETON PLASMA PHYSICS LABORATORY PRINCETON UNIVERSITY NATIONAL COMPACT STELLARATOR EXPERIMENT		
Pro E	DIMENSIONS ARE IN INCHES MACHINE SURFACES	STELLARATOR CORE CONVENTIONAL COILS TF COIL CROSS SECTION		
DO NOT VERIFY INFORMATION BY SCALING DRAWING	BREAK SHARP EDGES .005/.020	TOLERANCES NON-CUMULATIVE	DSN: J. RUSHINSKI	DRAWING NO:
		DECIMAL-INCH FRACTIONS	CHK:	SE131-009
		.XX +/- .000 0°-120° +/- .010	ENGR: M. KALISH	
		.XXX +/- .005 120°-120° +/- .010	SUPV:	SHEET 2 OF 3
		ANGULAR +/- .0°-15° OVER 120° +/- .172		REV

RELEASE LEVEL: WIP
DWG VERSION NO: 9

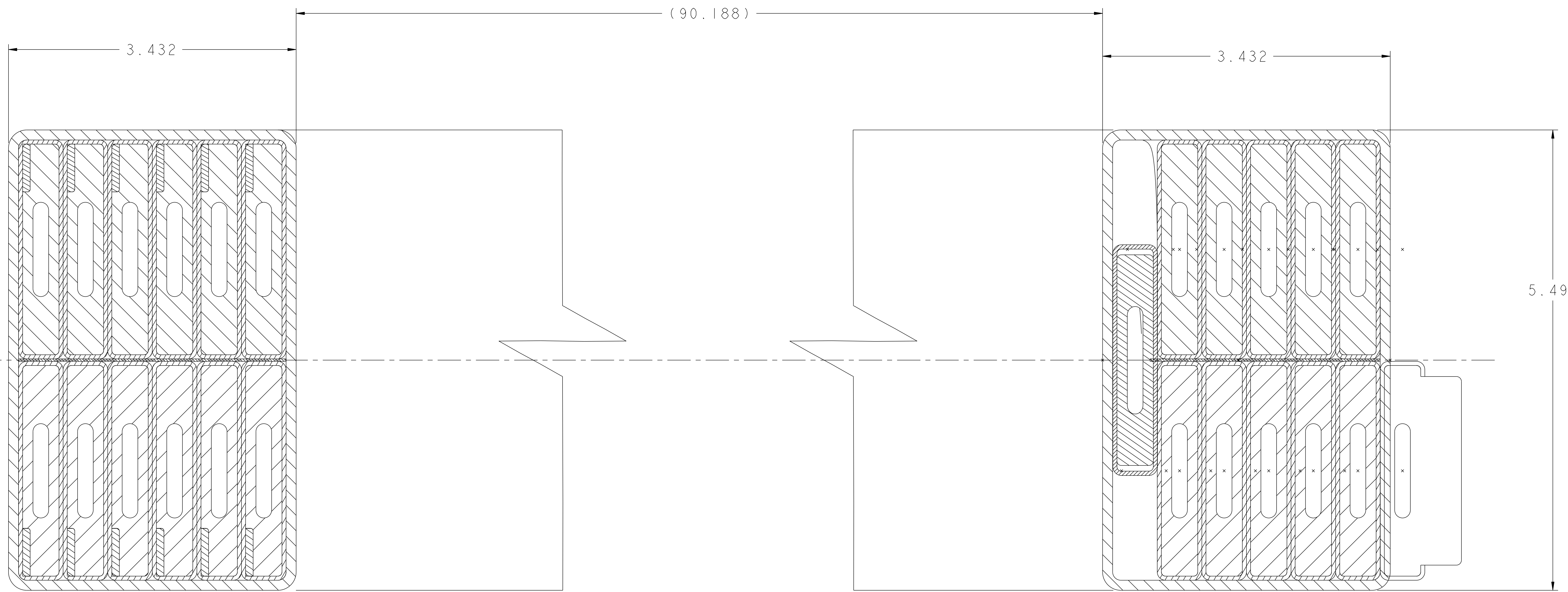
WEIGHT
1706.3 lbs

MODEL NAME
SE131-009

WELDING ENGINEER

NCSX-SE131-009

NO.	REVISION	BY	CH	SUP	APPROVED	DATE



**SECTION A-A
AT HORIZONTAL MIDPLANE
PRIOR TO MACHINING TAPER
SCALE 2.0**

RELEASE LEVEL: WIP
DWG VERSION NO: 9

WEIGHT
1706.3 lbs
MODEL NAME
SE131-009
WELDING
ENGINEER

PART NO.	DRAWING NO	NOMENCLATURE OR DESCRIPTION	MATERIAL	QTY RECD
PARTS LIST				
COMPUTER GENERATED DRAWING MANUAL CHANGES NOT PERMITTED Pro E		CENTRAL FILES: UNLESS OTHERWISE SPECIFIED	PRINCETON PLASMA PHYSICS LABORATORY PRINCETON UNIVERSITY NATIONAL COMPACT STELLARATOR EXPERIMENT	
DO NOT VERIFY INFORMATION BY SCALING DRAWING		DIMENSIONS ARE IN INCHES MACHINE SURFACES BREAK SHARP EDGES .005/.020	STELLARATOR CORE CONVENTIONAL COILS TF COIL AS WOUND "UNMACHINED TAPER"	
NEXT ASSEMBLY		TOLERANCES NON-CUMULATIVE DECIMAL-INCH FRACTIONS .XX +/- .030 .XXX +/- .005 ANGULAR +/- .15°	DSN: J. RUSHINSKI CHK: ENGR: SUPV:	DRAWING NO: SE131-009 SHEET 3 OF 3 REV

NCSX-SE131-009