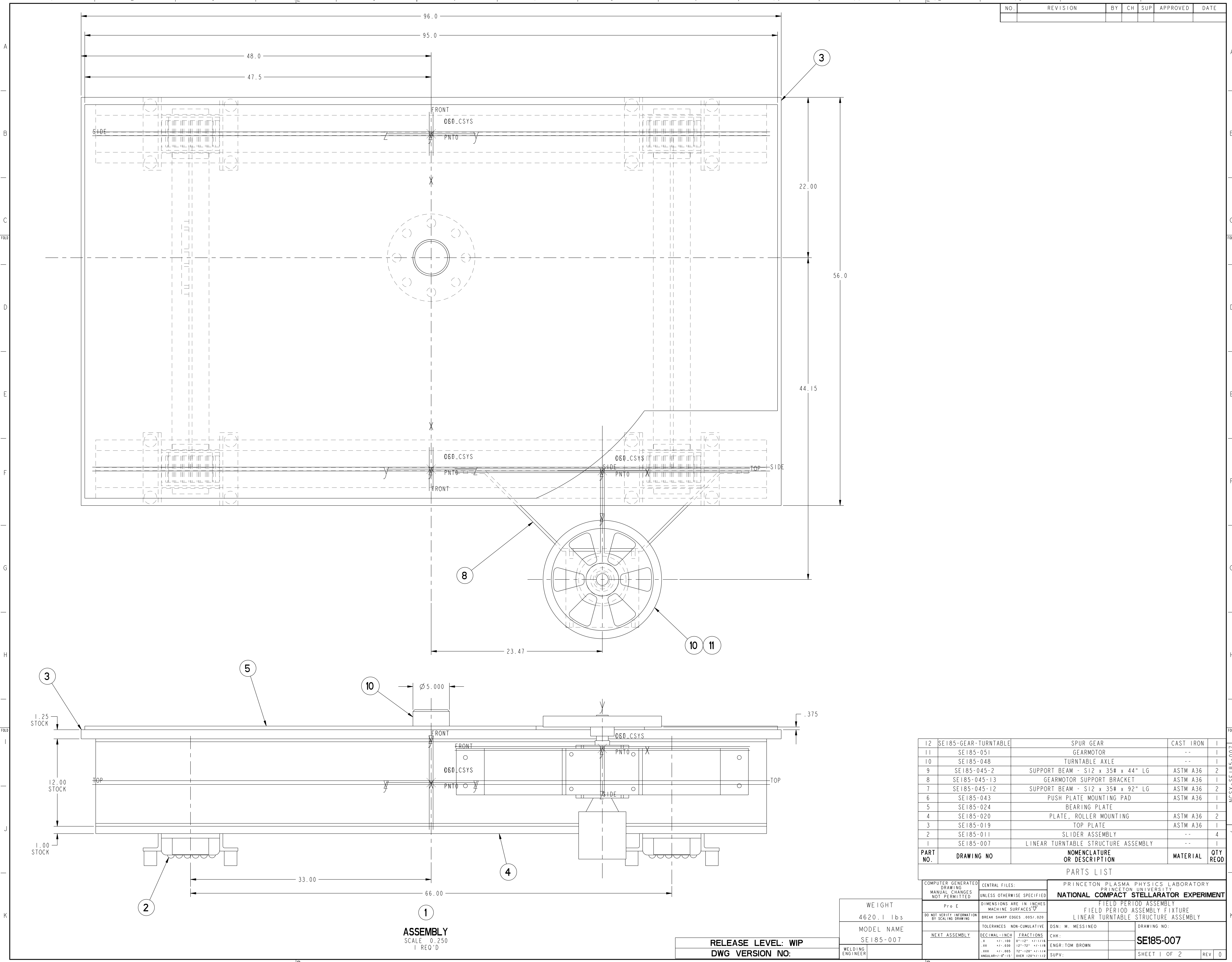


NO.	REVISION	BY	CH	SUP	APPROVED	DATE



PART NO.	DRAWING NO	NOMENCLATURE OR DESCRIPTION	MATERIAL	QTY	RECD
12	SE185-GEAR-TURNTABLE	SPUR GEAR	CAST IRON	1	
11	SE185-051	GEARMOTOR	--	1	
10	SE185-048	TURNTABLE AXLE	--	1	
9	SE185-045-2	SUPPORT BEAM - S12 x 35# x 44" LG	ASTM A36	2	
8	SE185-045-13	GEARMOTOR SUPPORT BRACKET	ASTM A36	1	
7	SE185-045-12	SUPPORT BEAM - S12 x 35# x 92" LG	ASTM A36	2	
6	SE185-043	PUSH PLATE MOUNTING PAD	ASTM A36	1	
5	SE185-024	BEARING PLATE		1	
4	SE185-020	PLATE, ROLLER MOUNTING	ASTM A36	2	
3	SE185-019	TOP PLATE	ASTM A36	1	
2	SE185-011	SLIDER ASSEMBLY	--	4	
1	SE185-007	LINEAR TURNTABLE STRUCTURE ASSEMBLY	--	1	

COMPUTER GENERATED DRAWING		CENTRAL FILES:		PRINCETON PLASMA PHYSICS LABORATORY	
DRAWING CHANGES NOT PERMITTED		UNLESS OTHERWISE SPECIFIED		PRINCETON UNIVERSITY	
DO NOT VERIFY INFORMATION BY SCALING DRAWING		DIMENSIONS ARE IN INCHES BREAK SHARP EDGES .005/.020		NATIONAL COMPACT STELLARATOR EXPERIMENT	
TOLERANCES NON-CUMULATIVE		DSN: M. MESSINEO		DRAWING NO:	
NEXT ASSEMBLY		CHK:		SE185-007	
		ENGR: TOM BROWN		SHEET 1 OF 2	
		SUPV:		REV 0	

WEIGHT  
4620.1 lbs

MODEL NAME  
SE185-007

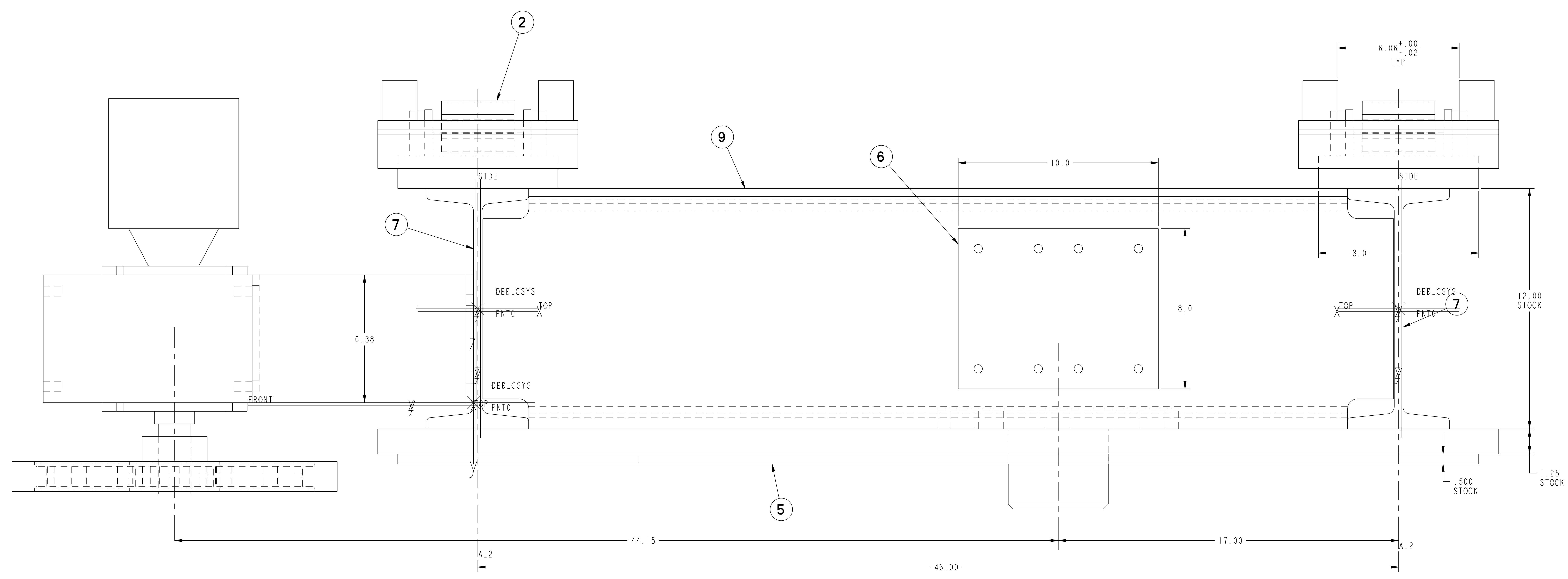
WELDING ENGINEER

RELEASE LEVEL: WIP  
DWG VERSION NO:

ASSEMBLY  
SCALE: 0.250  
1 REQ'D

NCSX-SE185-007

NO.	REVISION	BY	CH	SUP	APPROVED	DATE



FOR NOTES AND BILL OF MATERIAL SEE SHEET 1

RELEASE LEVEL: WIP  
 DWG VERSION NO: 5

WEIGHT  
 4620.1 lbs  
 MODEL NAME  
 SE185-007

COMPUTER GENERATED DRAWING MANUAL CHANGES NOT PERMITTED Pro E	CENTRAL FILES: UNLESS OTHERWISE SPECIFIED	PRINCETON PLASMA PHYSICS LABORATORY PRINCETON UNIVERSITY	
DO NOT VERIFY INFORMATION BY SCALING DRAWING	DIMENSIONS ARE IN INCHES MACHINE SURFACES BREAK SHARP EDGES .005/.020	NATIONAL COMPACT STELLARATOR EXPERIMENT	
SCALE 0.500	TOLERANCES NON-CUMULATIVE	DSN: M. MESSINEO	DRAWING NO:
NEXT ASSEMBLY	DECIMAL-INCH FRACTIONS .X +/- .000 0°-12° +/- .010 .XX +/- .030 12°-72° +/- .100 .XXX +/- .005 72°-120° +/- .125 ANGULAR +/- .0°-15° OVER 120° +/- .125	CHK: ENGR: T. BROWN	SE185-007
WELDING ENGINEER		SUPV:	SHEET 2 OF 2 REV

NCSX-SE185-007