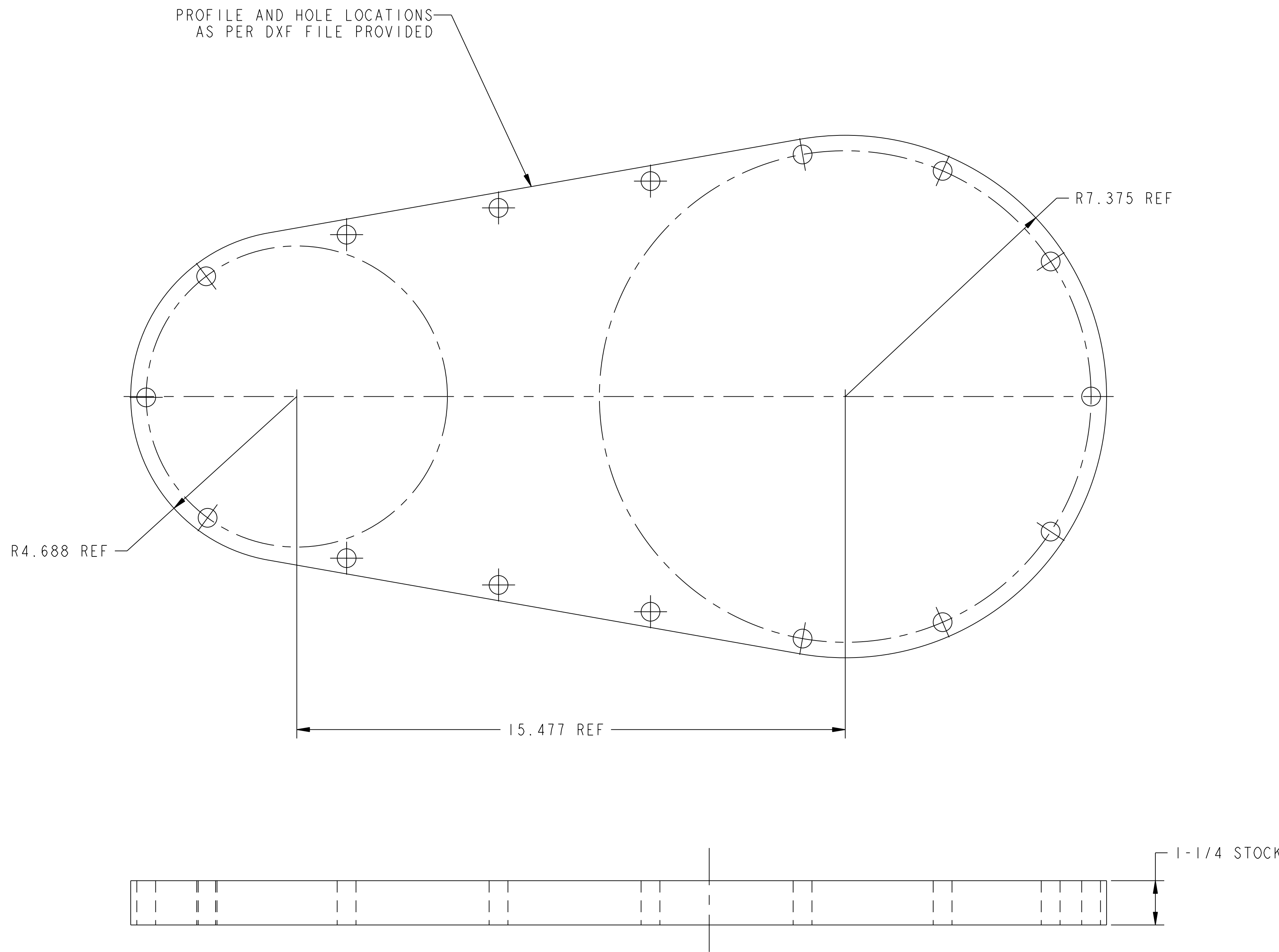
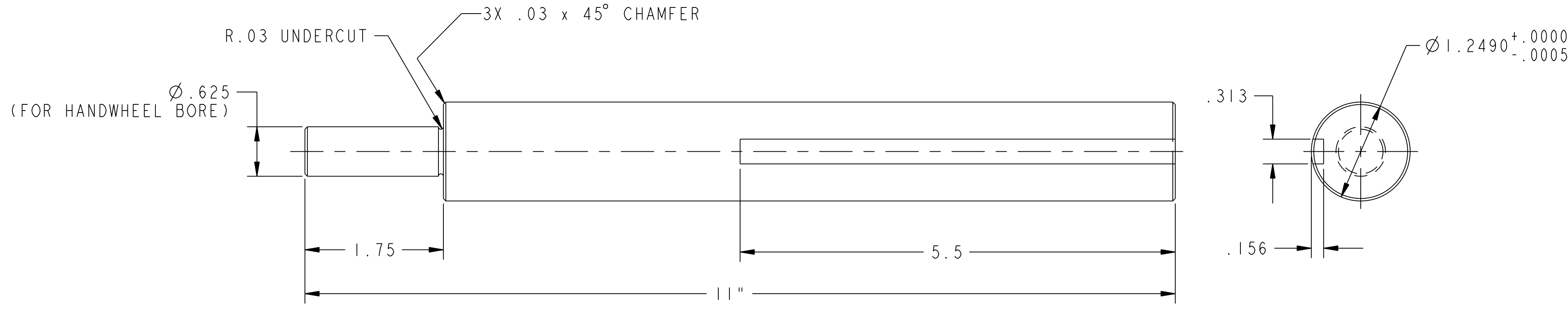


NO.	REVISION	BY	CH	SUP	APPROVED	DATE



1 PORT 12 BLANK-OFF COVER



2 WORM AXLE

**RELEASED FOR
FABRICATION / INSTALLATION**
PPPL Drafting:

2	THIS DWG	WORM AXLE	ASTM A36	1
1	THIS DWG	PORT 12 BLANK-OFF COVER	ASTM A36	2
PART NO.	DRAWING NO	NOMENCLATURE OR DESCRIPTION	MATERIAL	QTY REOD
PARTS LIST				
COMPUTER GENERATED DRAWING MANUAL CHANGES NOT PERMITTED		CENTRAL FILES: UNLESS OTHERWISE SPECIFIED	PRINCETON PLASMA PHYSICS LABORATORY PRINCETON UNIVERSITY	
Pro E		DIMENSIONS ARE IN INCHES MACHINE SURFACES	NATIONAL COMPACT STELLARATOR EXPERIMENT	
DO NOT VERIFY INFORMATION BY SCALING DRAWING		BREAK SHARP EDGES .005/.020	EXTERNAL FLUX LOOPS VACUUM VESSEL SUPPORT STAND FIXTURE ASSEMBLY DETAILS	
WEIGHT 116.0 lbs		TOLERANCES NON-CUMULATIVE	DSN: L. MORRIS	9-28-05
MODEL NAME SE184-003-1		DECIMAL-INCH FRACTIONS	CHK: T. BROWN	9-28-05
NEXT ASSEMBLY		.XX +/- .030	ENGR: T. BROWN	9-28-05
WELDING ENGINEER		.XXX +/- .005	SUPV: J. SIEGEL	9-28-05
RELEASE LEVEL: Fabrication DWG VERSION NO: 6		ANGULAR +/- .015	OVER 120 +/- .172	DRAWING NO: SE184-003
			SHEET 1 OF 1	REV 0

NCSX-SE184-003