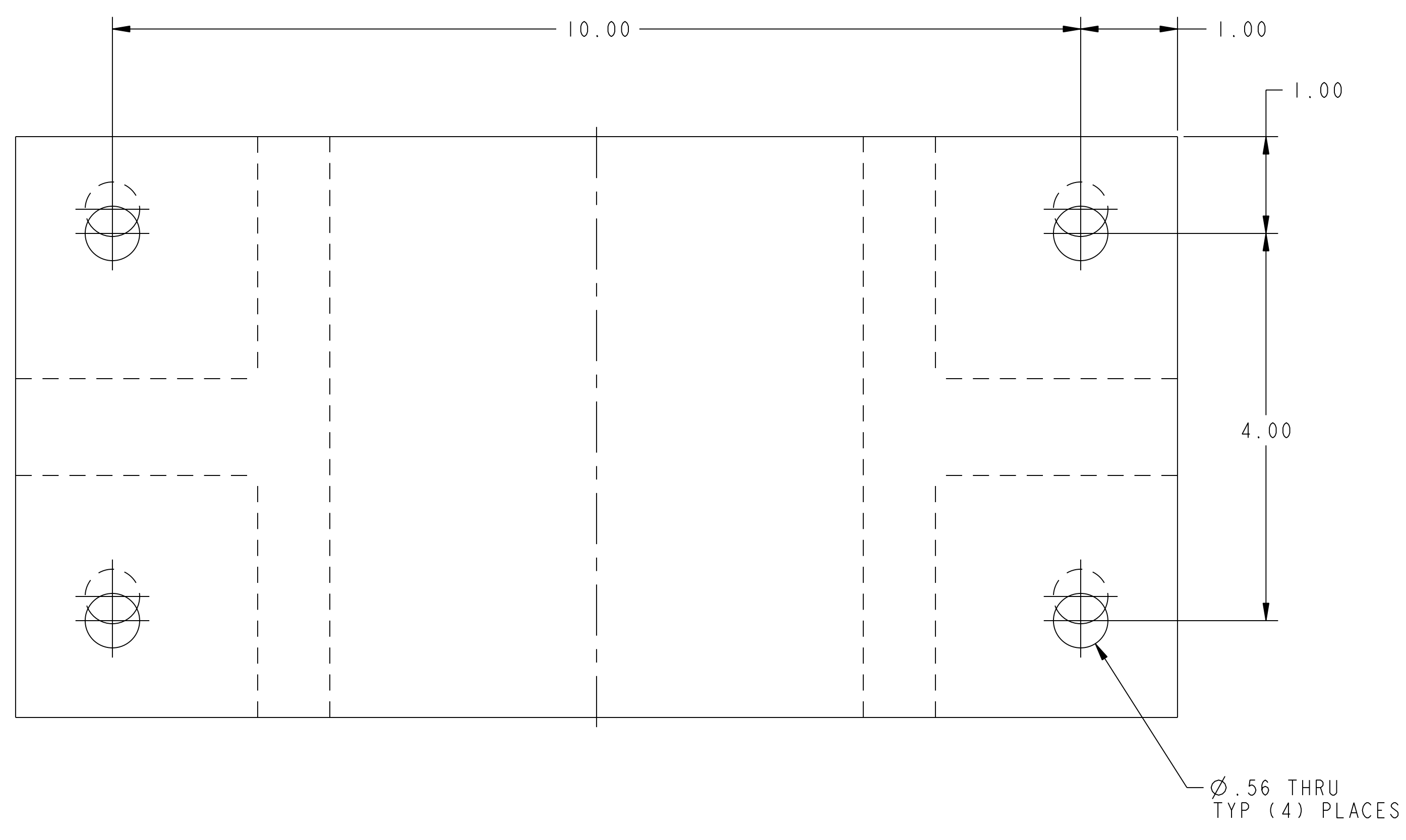
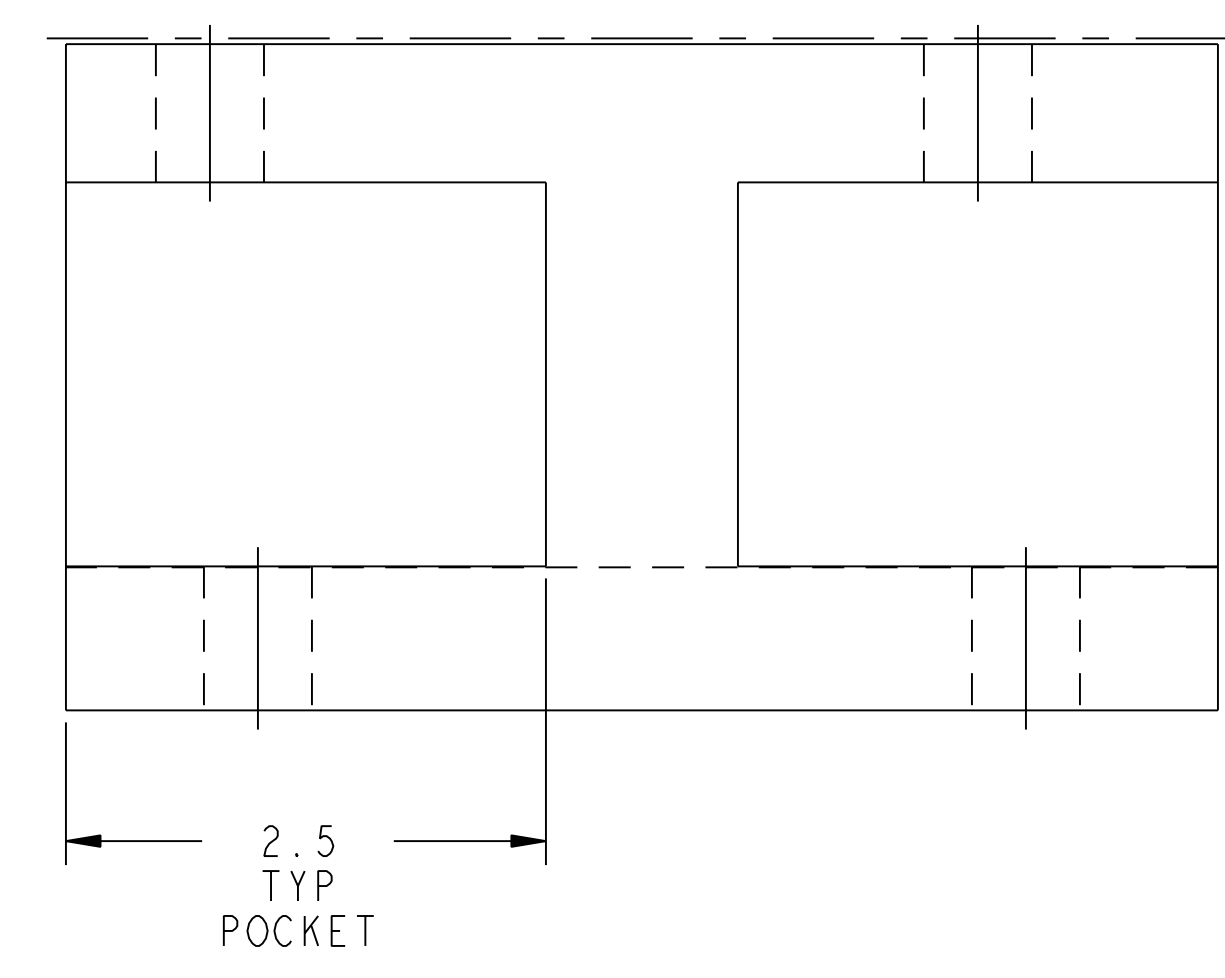
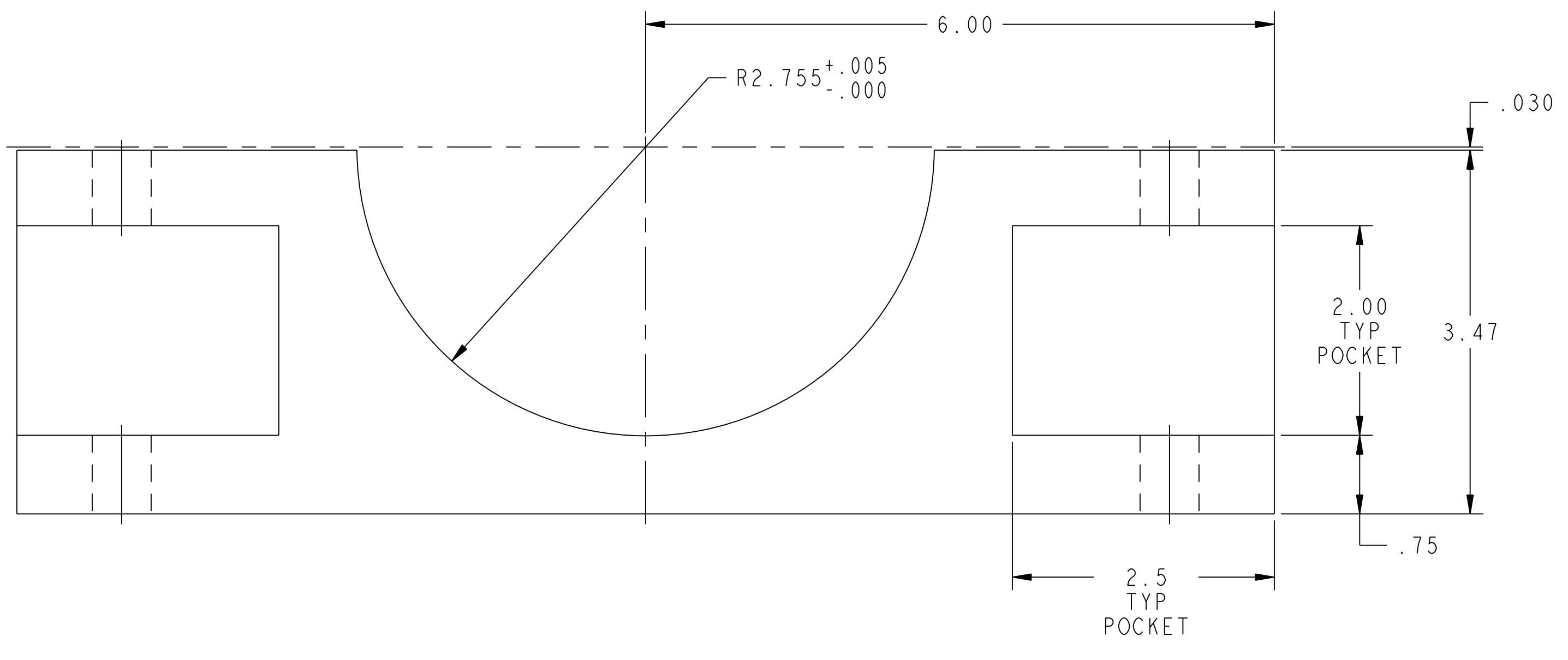
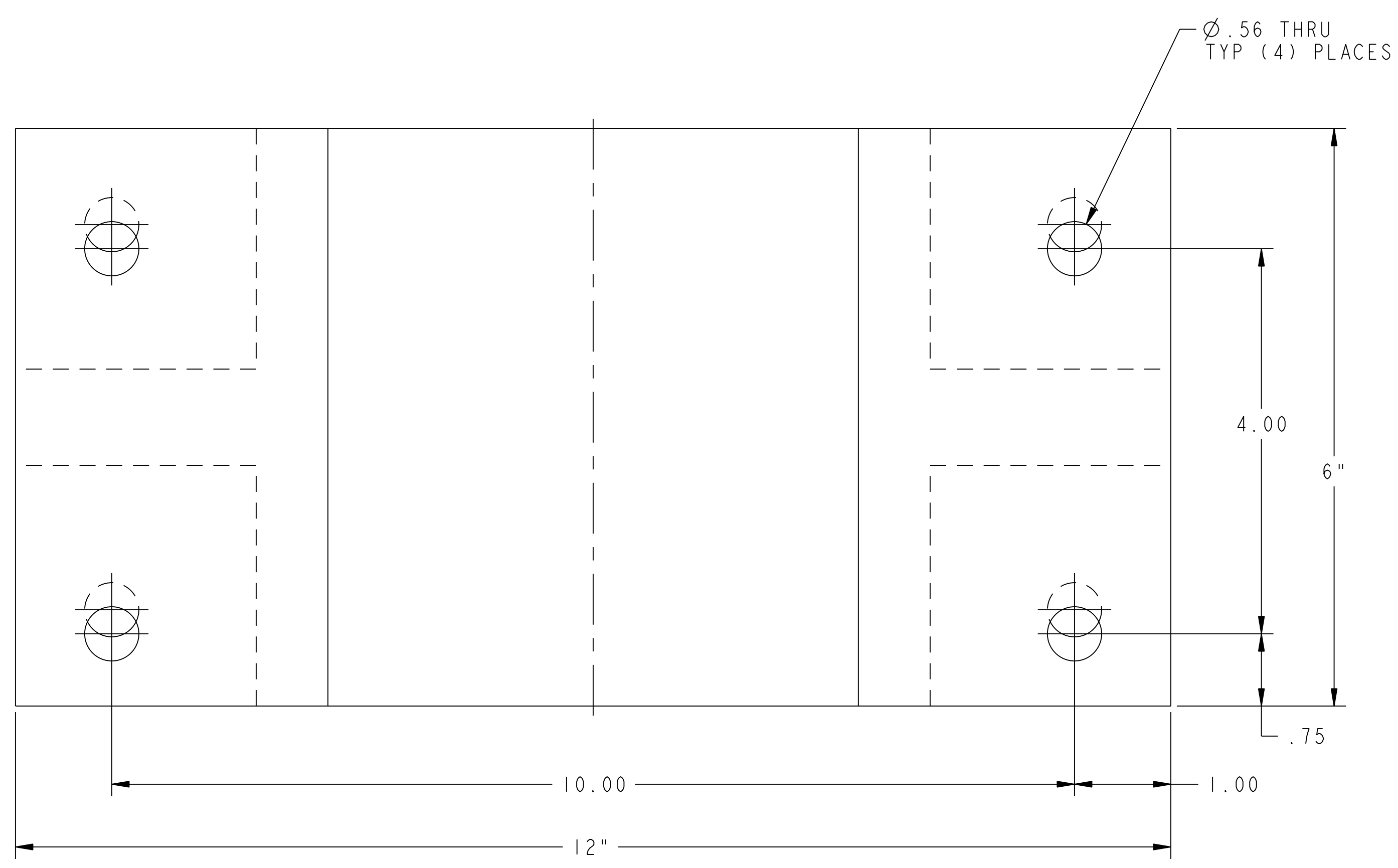


NO.	REVISION	BY	CH	SUP	APPROVED	DATE



1 SUPPORT AXLE CRADLE BASE

**RELEASED FOR  
FABRICATION / INSTALLATION**  
PPPL Drafting:

PART NO.	DRAWING NO.	DESCRIPTION OR DESCRIPTION	MATERIAL	QTY REQD
2	THIS DWG	SUPPORT AXLE CRADLE TOP	ALUM 6061-T6511	2
1	THIS DWG	SUPPORT AXLE CRADLE BASE	ALUM 6061-T6511	2

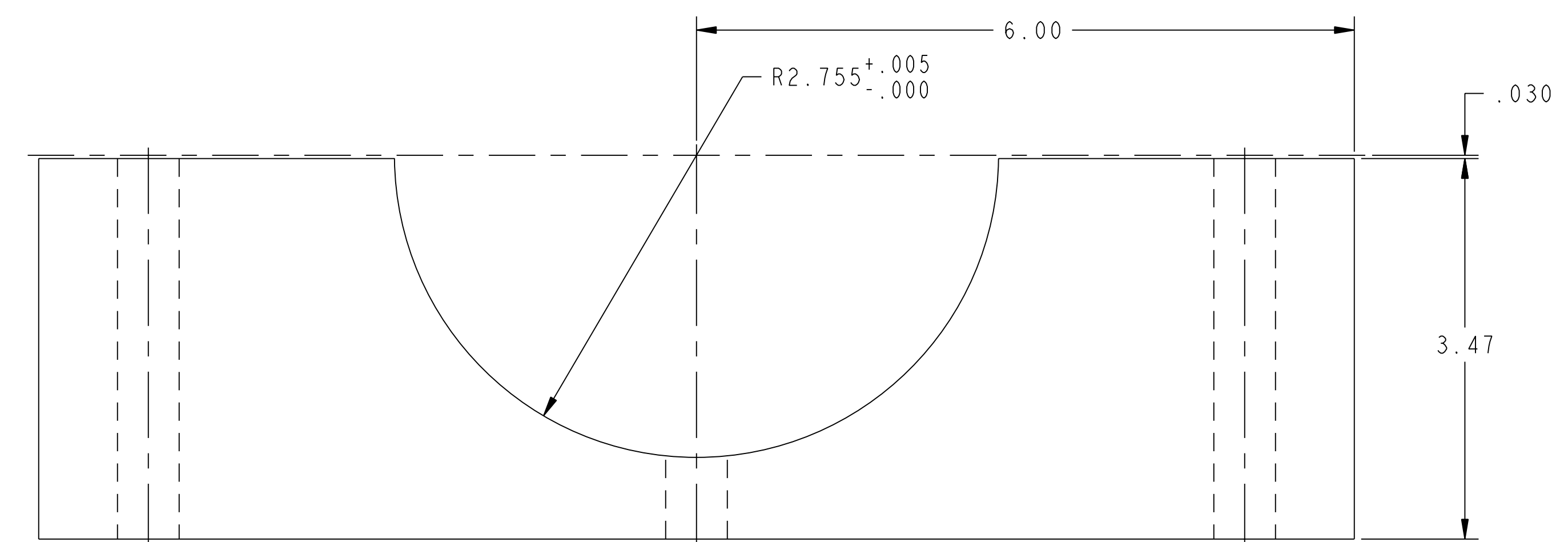
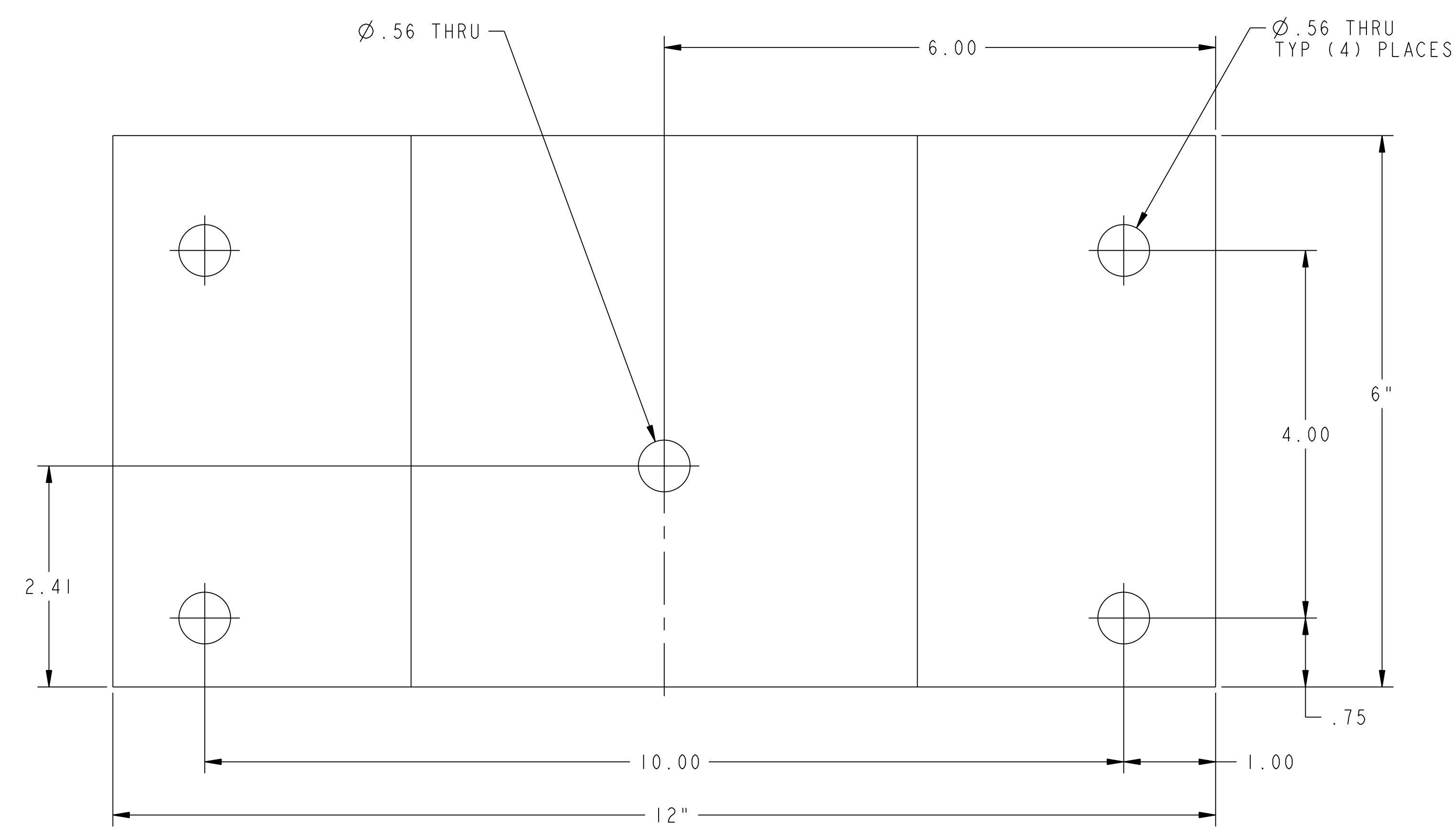
COMPUTER GENERATED DRAWING CHANGES NOT PERMITTED		CENTRAL FILES:	PRINCETON PLASMA PHYSICS LABORATORY	
Pro E		UNLESS OTHERWISE SPECIFIED	NATIONAL COMPACT STELLARATOR EXPERIMENT	
DO NOT VERIFY INFORMATION BY SCALING DRAWING		DIMENSIONS ARE IN INCHES MACHINE SURFACES	EXTERNAL FLUX LOOPS	
TOLERANCES NON-CUMULATIVE		BREAK SHARP EDGES .005/.020	VACUUM VESSEL SUPPORT STAND FIXTURE ASSEMBLY	
NEXT ASSEMBLY		DECIMAL-INCH FRACTIONS	DSN: L. MORRIS	9-28-05 DRAWING NO:
WEIGHT		.XX +/- .000 0°-120° +/- 1/16	CHK: T. BROWN	9-28-05
MODEL NAME		.XXX +/- .005 120°-120° +/- 1/16	ENGR: T. BROWN	9-28-05
SE184-004-2		ANGULAR +/- 0°-15° OVER 120° +/- 1/16	SUPV: J. SIEGEL	9-28-05
DWG VERSION NO: 4				SHEET 1 OF 2 REV 0

RELEASE LEVEL: Fabrication  
DWG VERSION NO: 4

WEIGHT  
+2.5 lbs  
MODEL NAME  
SE184-004-2  
WELDING ENGINEER

NCSX-SE184-004

NO.	REVISION	BY	CH	SUP	APPROVED	DATE



2 SUPPORT AXLE CRADLE TOP

**RELEASED FOR  
FABRICATION / INSTALLATION**  
PPPL Drafting:

FOR BILL OF MATERIAL AND NOTES SEE SHEET 1

**RELEASE LEVEL: Fabrication**  
**DWG VERSION NO: 4**

WEIGHT  
~~+2.5 lbs~~

MODEL NAME  
SE184-004-2

WELDING  
ENGINEER

COMPUTER GENERATED DRAWING MANUAL CHANGES NOT PERMITTED Pro E	CENTRAL FILES:	PRINCETON PLASMA PHYSICS LABORATORY		
	UNLESS OTHERWISE SPECIFIED	NATIONAL COMPACT STELLARATOR EXPERIMENT		
DO NOT VERIFY INFORMATION BY SCALING DRAWING	DIMENSIONS ARE IN INCHES MACHINE SURFACES BREAK SHARP EDGES .005/.020	EXTERNAL FLUX LOOPS VACUUM VESSEL SUPPORT STAND FIXTURE ASSEMBLY SUPPORT AXLE CRADLE DETAILS		
NEXT ASSEMBLY	TOLERANCES NON-CUMULATIVE	DSN: L. MORRIS	9-28-05	DRAWING NO:
	DECIMAL-INCH FRACTIONS	CHK: T. BROWN	9-28-05	<b>SE184-004</b>
	.XX +/- .030 .XXX +/- .005 ANGULAR +/- .015	ENGR: T. BROWN	9-28-05	
		SUPV: J. SIEGEL	9-28-05	SHEET 2 OF 2 REV 0