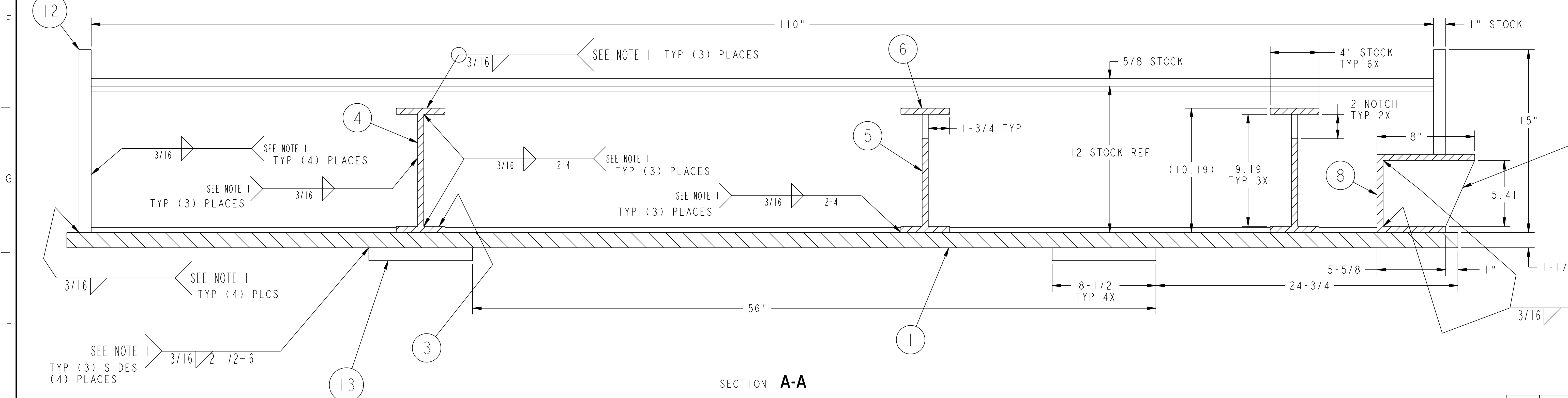


NOTES

1. WELDING SHALL BE PERFORMED IN ACCORDANCE WITH THE REQUIREMENTS OF AWS D1.1. VISUAL WELD INSPECTION SHALL BE PERFORMED IN ACCORDANCE WITH THE ACCEPTANCE CRITERIA OF AWS D1.1 Section 6.
2. ALL MATERIAL IS 1/2" STOCK UNLESS OTHERWISE SPECIFIED.



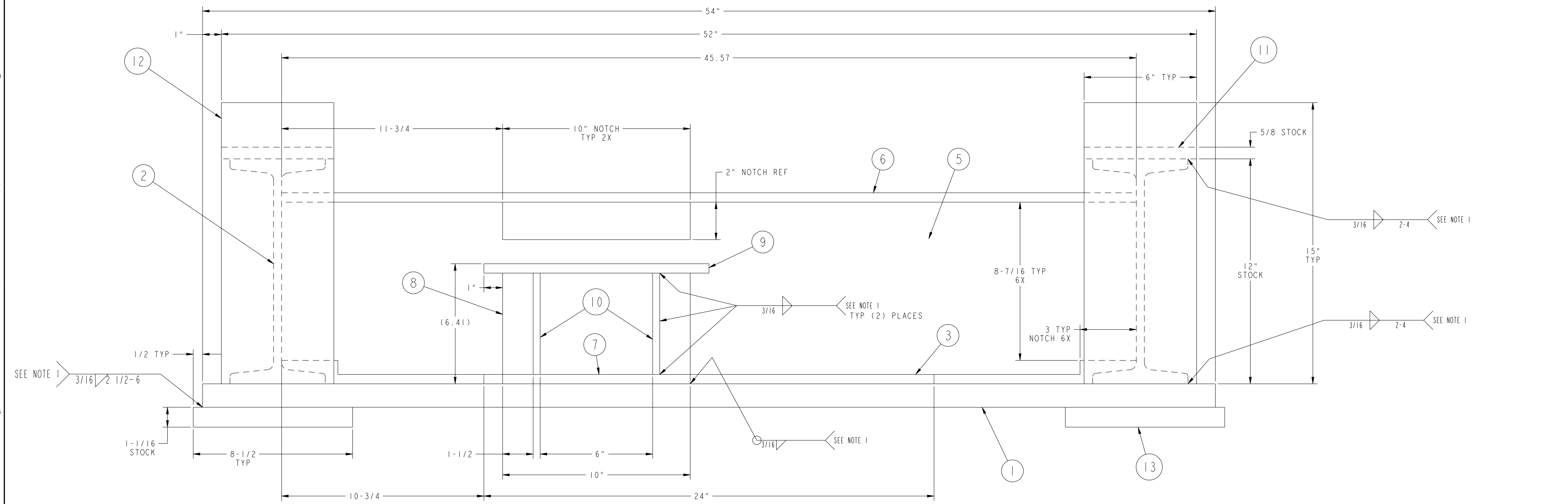
**FOR INFORMATION ONLY
NOT FOR FABRICATION**

QTY	PART NO.	DRAWING NO.	NOMENCLATURE OR DESCRIPTION	MATERIAL	QTY REQD
	4	13	THIS DWG	SLIDER ASSEMBLY MOUNTING PAD	ASTM A36
	4	12	THIS DWG	END STOP	ASTM A36
	2	11	THIS DWG	SLIDER RAIL	SAE 4140
	2	10	THIS DWG	GEARMOTOR SUPPORT BRACKET GUSSET PLATE	ASTM A36
	1	9	THIS DWG	GEARMOTOR SUPPORT BRACKET TOP PLATE	ASTM A36
	1	8	THIS DWG	GEARMOTOR SUPPORT BRACKET BACK PLATE	ASTM A36
	1	7	THIS DWG	GEARMOTOR SUPPORT BRACKET BASE PLATE	ASTM A36
	3	6	THIS DWG	SUPPORT BRACKET TOP PLATE	ASTM A36
	2	5	THIS DWG	SUPPORT BRACKET WEB PLATE (W/ NOTCH)	ASTM A36
	1	4	THIS DWG	SUPPORT BRACKET WEB PLATE (NO NOTCH)	ASTM A36
	3	3	THIS DWG	SUPPORT BRACKET BASE PLATE	ASTM A36
	2	2	THIS DWG	SUPPORT BEAM S12 x 35# x 110" LG	ASTM A36
	1	1	THIS DWG	BASE PLATE	ASTM A36
			THIS DWG	BASE LINEAR MOTION WELDMENT	

COMPUTER GENERATED DRAWING MANUAL CHANGES NOT PERMITTED Pro E	CENTRAL FILES: UNLESS OTHERWISE SPECIFIED DIMENSIONS ARE IN INCHES MACHINE SURFACES UNLESS SHOWN OTHERWISE BREAK SHARP EDGES .005/.020	PRINCETON PLASMA PHYSICS LABORATORY PRINCETON UNIVERSITY NATIONAL COMPACT STELLARATOR EXPERIMENT FIELD PERIOD ASSEMBLY FIELD PERIOD ASSEMBLY FIXTURE BASE LINEAR MOTION WELDMENT
DO NOT VERIFY INFORMATION BY SCALING DRAWING	TOLERANCES NON-CUMULATIVE DECIMAL-INCH FRACTIONS .XX +/- .010 .XXX +/- .005 ANGULAR +/- .015	DSN: L. MORRIS CHK: ENGR: T. BROWN SUPV:
WEIGHT 3724.2 lbs	SCALE 0.250	DRAWING NO: SE185-004-PREL
MODEL NAME SE185-004-PREL	WELDING ENGINEER	SHEET 1 OF 2 REV 0
RELEASE LEVEL: DWG VERSION NO: 0		PRINCETON PLASMA PHYSICS LABORATORY PRINCETON UNIVERSITY NATIONAL COMPACT STELLARATOR EXPERIMENT FIELD PERIOD ASSEMBLY FIELD PERIOD ASSEMBLY FIXTURE BASE LINEAR MOTION WELDMENT

NCSX-SE185-004-PREL

NO.	REVISION	BY	CH	SUP	APPROVED	DATE



**FOR INFORMATION ONLY
NOT FOR FABRICATION**

FOR NOTES AND BILL OF MATERIAL SEE SHEET 1

RELEASE LEVEL:
DWG VERSION NO: 0

WEIGHT
3724.2 lbs

MODEL NAME
SE185-004-PREL

WELDING ENGINEER

COMPUTER GENERATED DRAWING MANUAL CHANGES NOT PERMITTED Pro E DO NOT VERIFY INFORMATION BY SCALING DRAWING	CENTRAL FILES:	PRINCETON PLASMA PHYSICS LABORATORY PRINCETON UNIVERSITY	
	UNLESS OTHERWISE SPECIFIED	NATIONAL COMPACT STELLARATOR EXPERIMENT	
SCALE 0.500	DIMENSIONS ARE IN INCHES MACHINE SURFACES BREAK SHARP EDGES .005/.020	FIELD PERIOD ASSEMBLY FIXTURE BASE LINEAR MOTION WELDMENT	
TOLERANCES NON-CUMULATIVE	DECIMAL-INCH FRACTIONS	DSN: L. MORRIS	DRAWING NO:
NEXT ASSEMBLY	.XX ±.000 0°-12° ±.010 .XX ±.005 12°-120° ±.010 ANGULAR ±.0°-15° OVER 120° ±.122	CHK: ENGR. T. BROWN	SE185-004-PREL
		SUPV:	SHEET 2 OF 2 REV 0