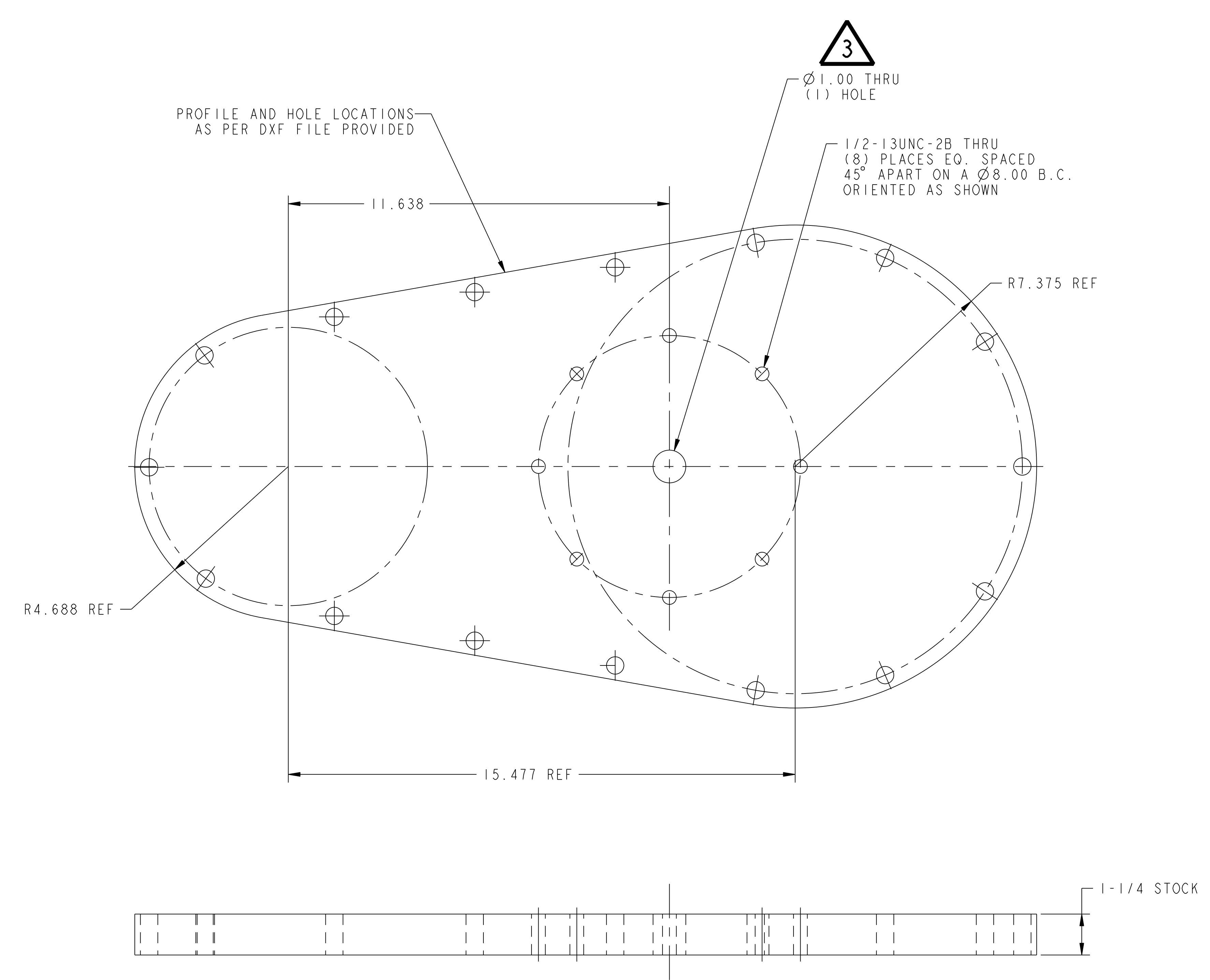
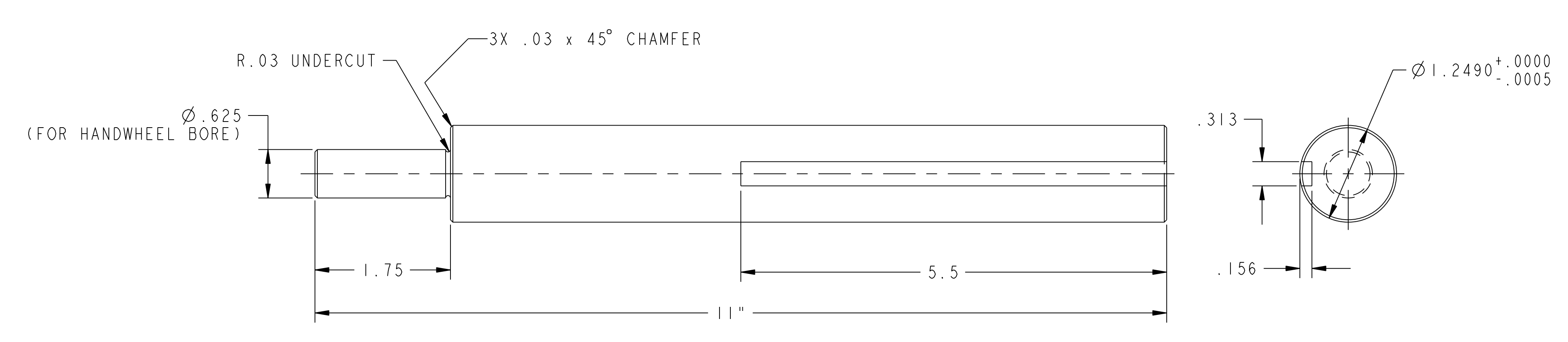


NO.	REVISION	BY	CH	SUP	APPROVED	DATE
1	REVISED PER ECN-5028	LM	TB	JS	T. BROWN	10-18-05
2	REVISED PER ECN-5029	LM	TB	JS	T. BROWN	10-19-05
3	REVISED PER ECN-	LM	TB	JS	T. BROWN	



1 PORT 12 BLANK-OFF COVER



2 WORM AXLE

PART NO.	DRAWING NO	NOMENCLATURE OR DESCRIPTION	MATERIAL	QTY REOD
2	THIS DWG	WORM AXLE	ASTM A36	1
1	THIS DWG	PORT 12 BLANK-OFF COVER	ASTM A36	2

PARTS LIST

COMPUTER GENERATED DRAWING MANUAL CHANGES NOT PERMITTED Pro E	CENTRAL FILES: UNLESS OTHERWISE SPECIFIED	PRINCETON PLASMA PHYSICS LABORATORY PRINCETON UNIVERSITY NATIONAL COMPACT STELLARATOR EXPERIMENT		
DO NOT VERIFY INFORMATION BY SCALING DRAWING	DIMENSIONS ARE IN INCHES MACHINE SURFACES BREAK SHARP EDGES .005/.020	EXTERNAL FLUX LOOPS VACUUM VESSEL SUPPORT STAND FIXTURE ASSEMBLY DETAILS		
WEIGHT 115.9 lbs	MODEL NAME SE184-003-1	TOLERANCES NON-CUMULATIVE	DSN: L. MORRIS	9-28-05 DRAWING NO:
RELEASE LEVEL: WIP DWG VERSION NO: 0	WELDING ENGINEER	DECIMAL-INCH FRACTIONS	CHK: T. BROWN	9-28-05
		.XX +/- .030	ENGR: T. BROWN	9-28-05
		.XXX +/- .005	SUPV: J. SIEGEL	9-28-05
		ANGULAR +/- .0°-15°		

NCSX-SE184-003