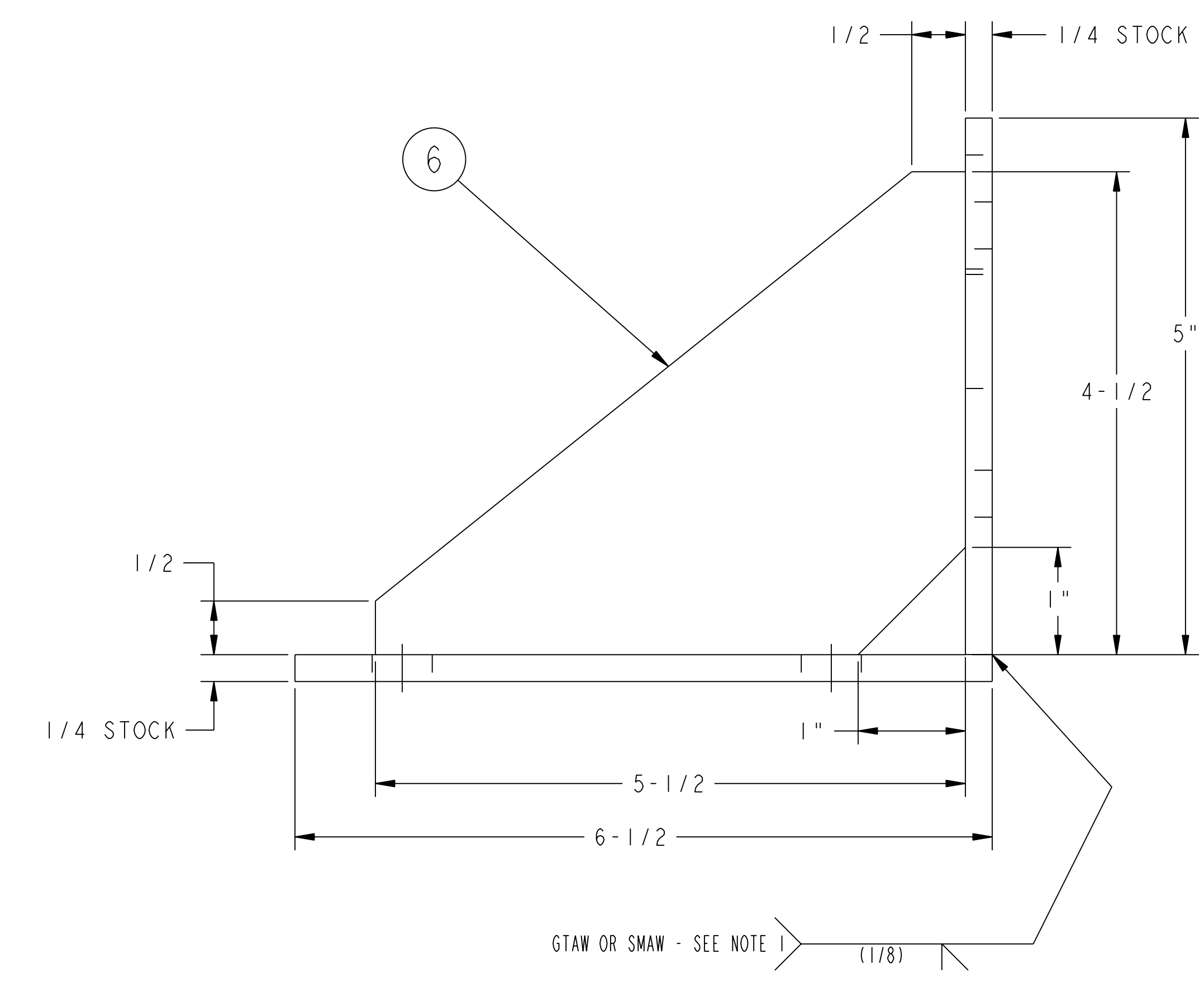
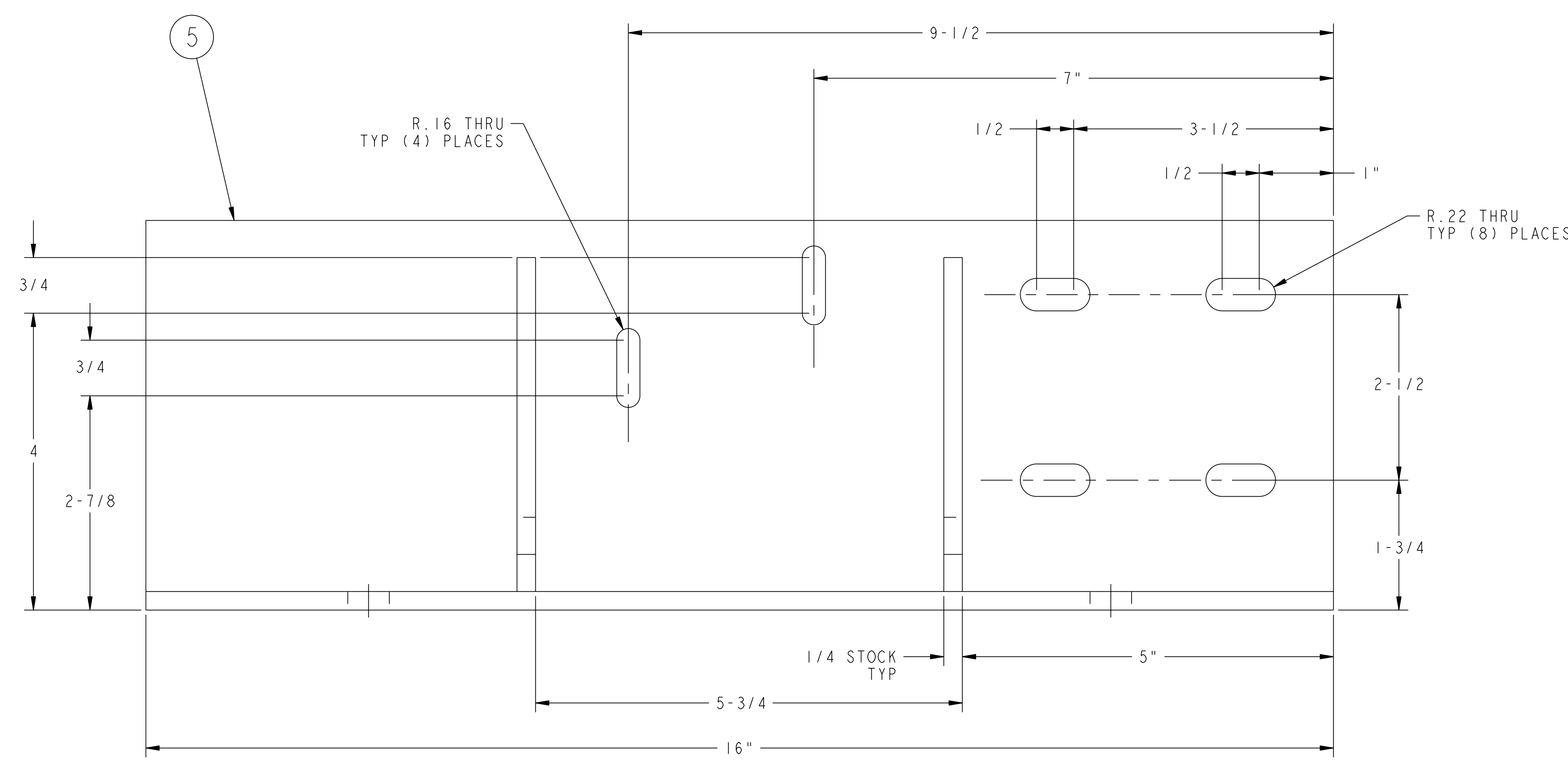
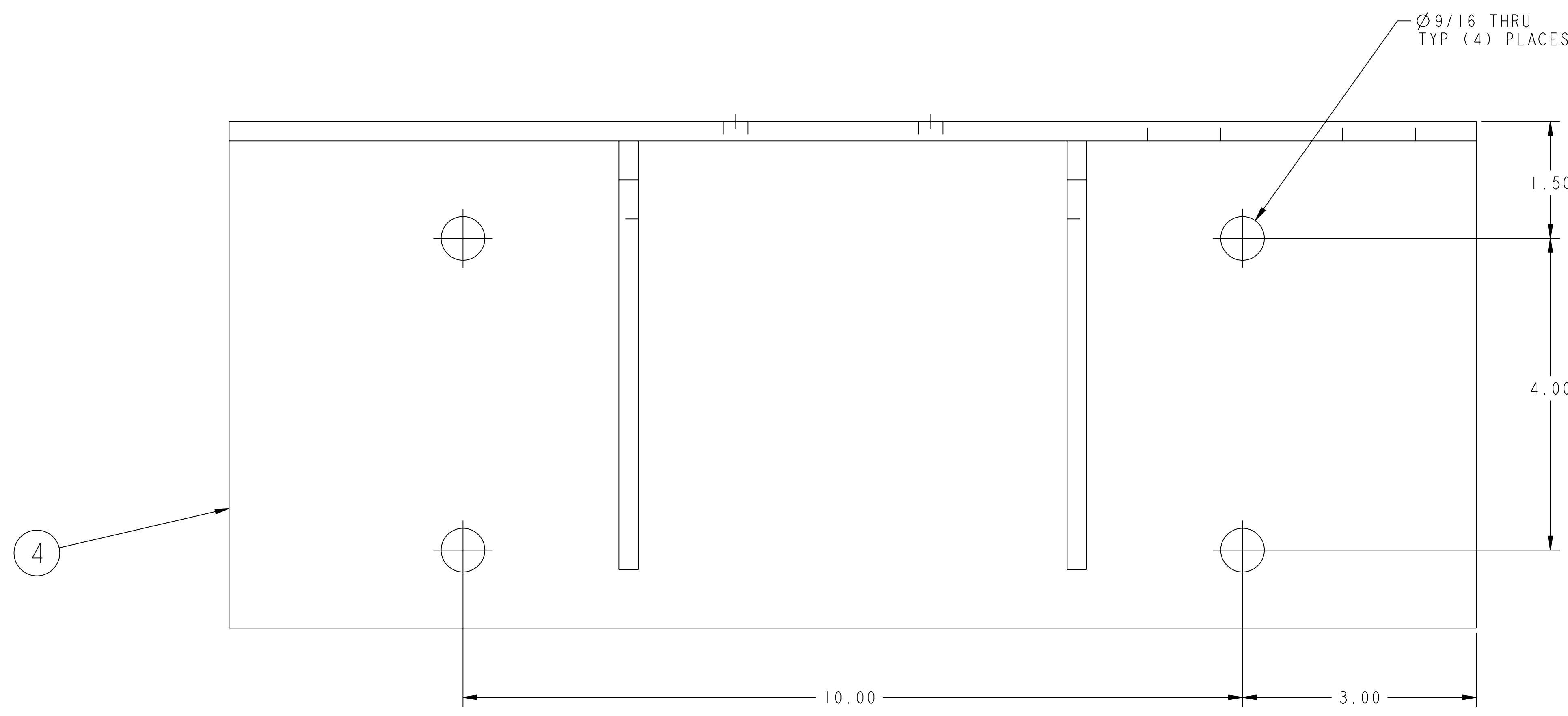


NO.	REVISION	BY	CH	SUP	APPROVED	DATE



02 ASSEMBLY PAWL SUPPORT BRACKET WELDMENT - TYPE "B"

NOTE:
ALL WELDS ON THIS ASSEMBLY ARE TO BE 1/8" FILLET WELD UNLESS OTHERWISE INDICATED.
SEE NOTE 1

RELEASED FOR FABRICATION / INSTALLATION
PPPL Drafting:

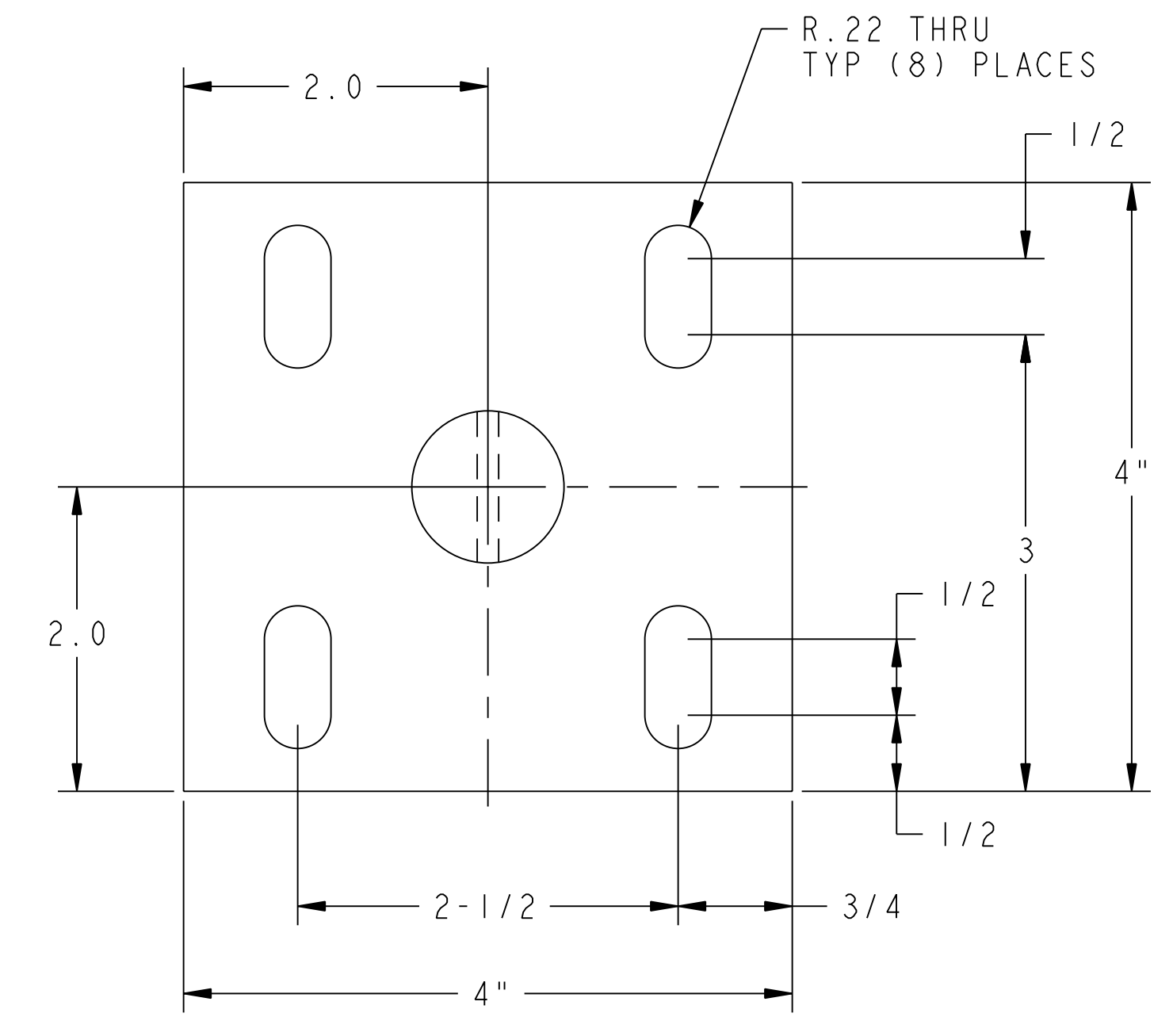
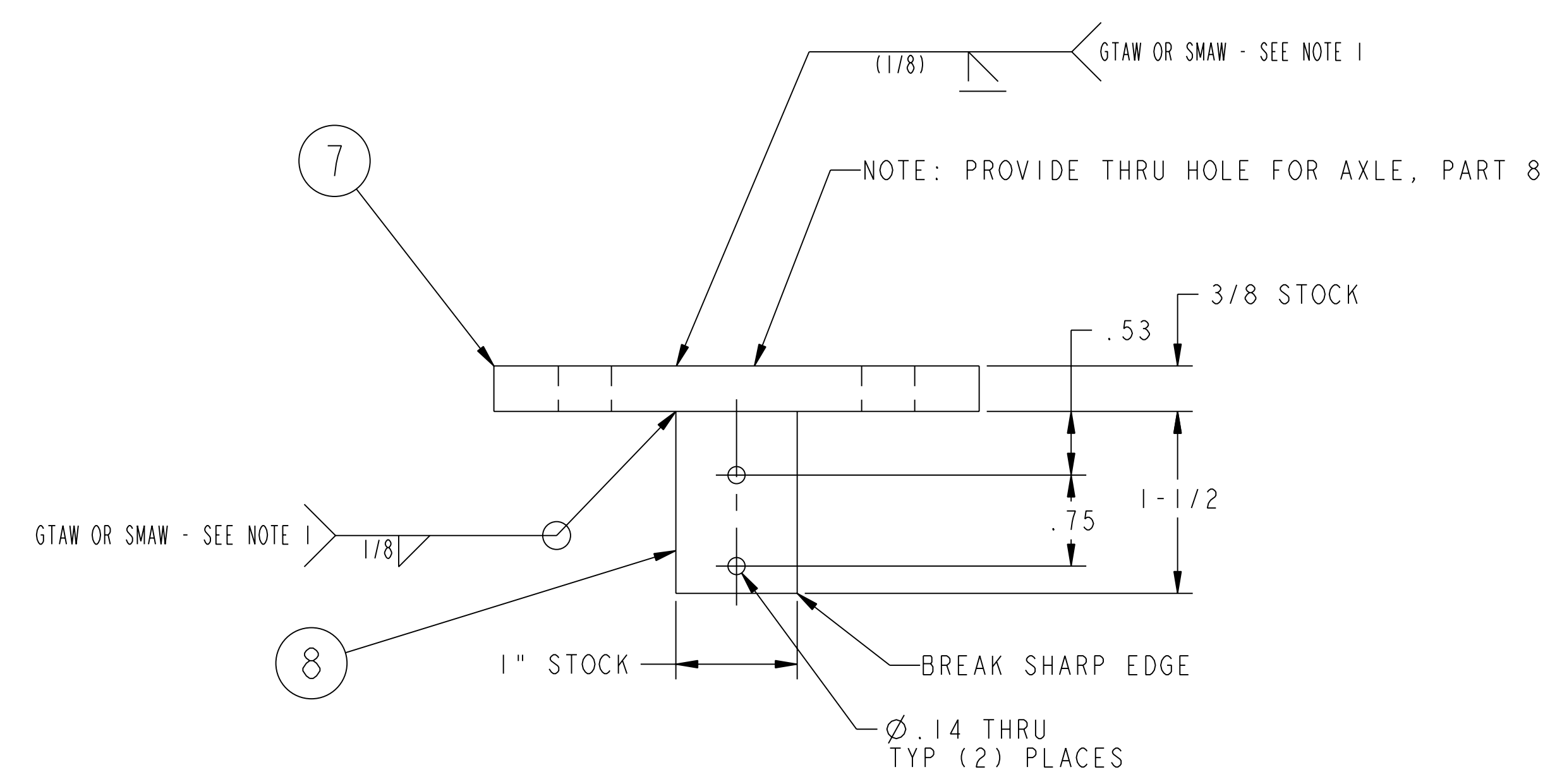
FOR NOTES AND BILL OF MATERIAL SEE SHEET 1

COMPUTER GENERATED DRAWING MANUAL CHANGES NOT PERMITTED Pro E	CENTRAL FILES:	PRINCETON PLASMA PHYSICS LABORATORY NATIONAL COMPACT STELLARATOR EXPERIMENT	
	UNLESS OTHERWISE SPECIFIED	EXTERNAL FLUX LOOPS VACUUM VESSEL SUPPORT STAND FIXTURE ASSEMBLY MISCELLANEOUS WELDMENTS	
DO NOT VERIFY INFORMATION BY SCALING DRAWING	DIMENSIONS ARE IN INCHES MACHINE SURFACES BREAK SHARP EDGES .005/.020	DSN: L. MORRIS	2-15-06
TOLERANCES NON-CUMULATIVE	DECIMAL-INCH FRACTIONS	CHK: T. BROWN	2-15-06
NEXT ASSEMBLY	.XX ±.000 0°-12° ±.010 .XX ±.000 12°-72° ±.010 .XX ±.005 72°-120° ±.010 ANGULAR ±.0°-15° OVER 120° ±.12°	ENGR: T. BROWN	2-15-06
WEIGHT	+6.7 lbs	SUPV: J. SIEGEL	2-15-06
MODEL NAME	SE184-005-01	DRAWING NO:	SE184-005
WELDING ENGINEER	L. DUDEK 2-15-06	SHEET 2 OF 3	REV

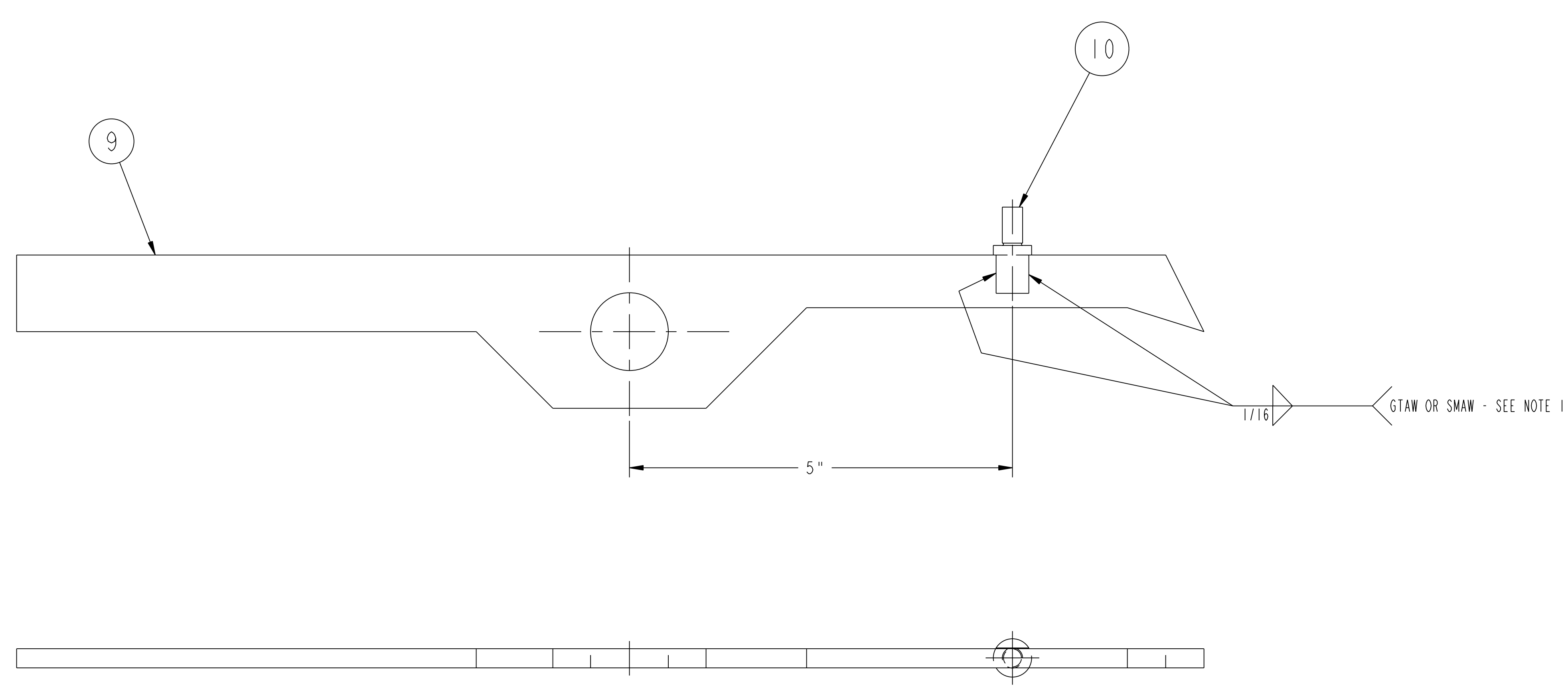
RELEASE LEVEL: Fabrication
DWG VERSION NO: 0

NCSX-SE184-005

NO.	REVISION	BY	CH	SUP	APPROVED	DATE



03 ASSEMBLY PAWL AXLE SUPPORT PLATE WELDMENT



04 ASSEMBLY PAWL WELDMENT

**RELEASED FOR
FABRICATION / INSTALLATION**
PPPL Drafting:

FOR NOTES AND BILL OF MATERIAL SEE SHEET 1

RELEASE LEVEL: Fabrication
DWG VERSION NO: 0

WEIGHT	+5.2 lbs
MODEL NAME	SE184-005-02
WELDING ENGINEER	L. DUDEK 2-15-06

COMPUTER GENERATED DRAWING MANUAL CHANGES NOT PERMITTED Pro E	CENTRAL FILES: UNLESS OTHERWISE SPECIFIED	PRINCETON PLASMA PHYSICS LABORATORY NATIONAL COMPACT STELLARATOR EXPERIMENT	
DO NOT VERIFY INFORMATION BY SCALING DRAWING	DIMENSIONS ARE IN INCHES MACHINE SURFACES BREAK SHARP EDGES .005/.020	EXTERNAL FLUX LOOPS VACUUM VESSEL SUPPORT STAND FIXTURE ASSEMBLY MISCELLANEOUS DETAILS	
NEXT ASSEMBLY	TOLERANCES NON-CUMULATIVE DECIMAL-INCH FRACTIONS .XX ±.000 .XXX ±.005 ANGULAR ±.0°-15° OVER 120° ±.1°-1.2°	DSN: L. MORRIS CHK: T. BROWN ENGR: T. BROWN SUPV: J. SIEGEL	2-15-06 2-15-06 2-15-06 2-15-06
		DRAWING NO: SE184-005	SHEET 3 OF 3

NCSX-SE184-005