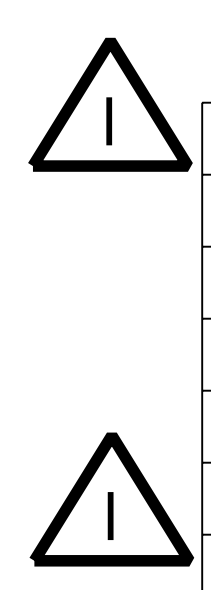
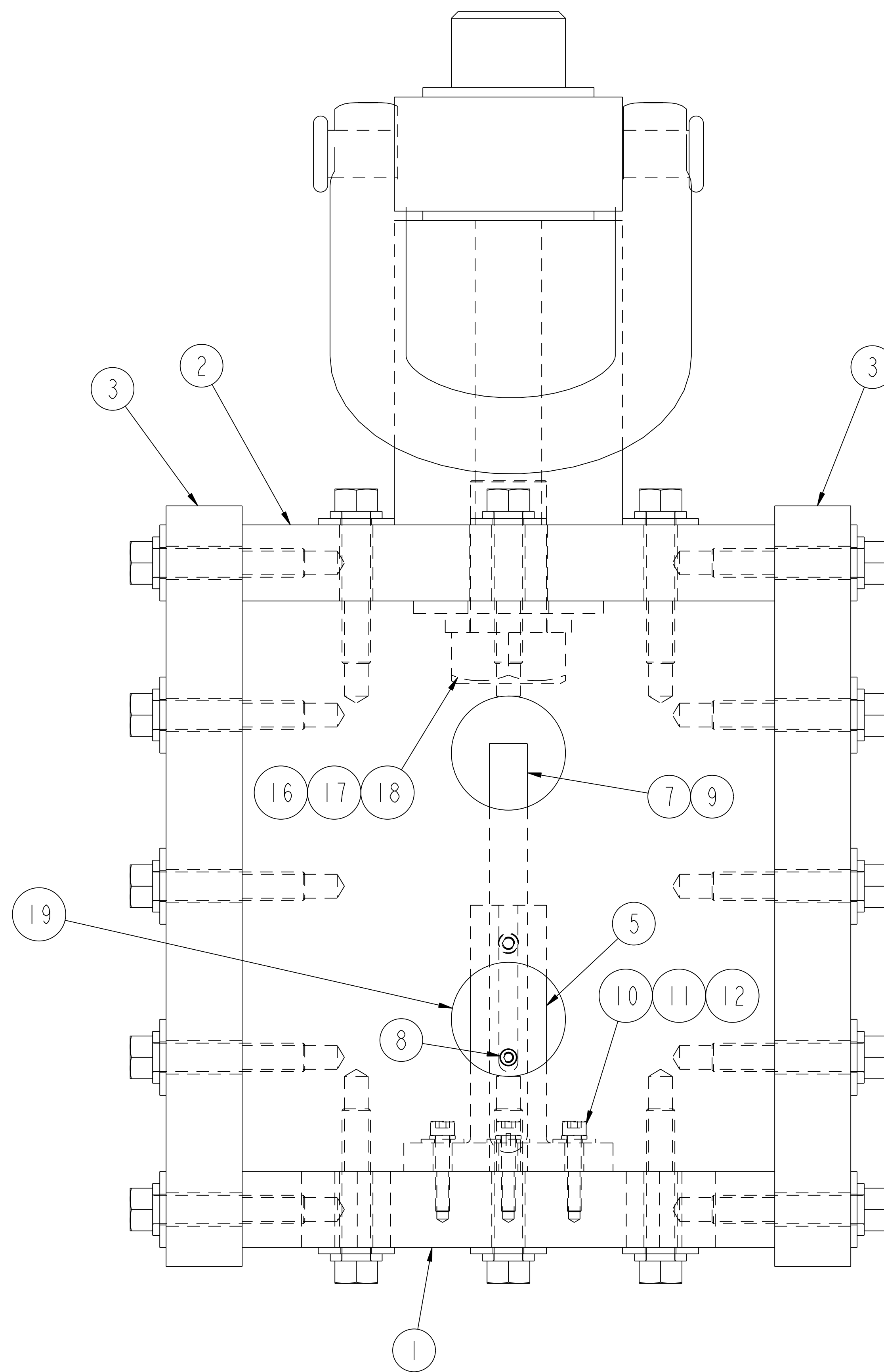
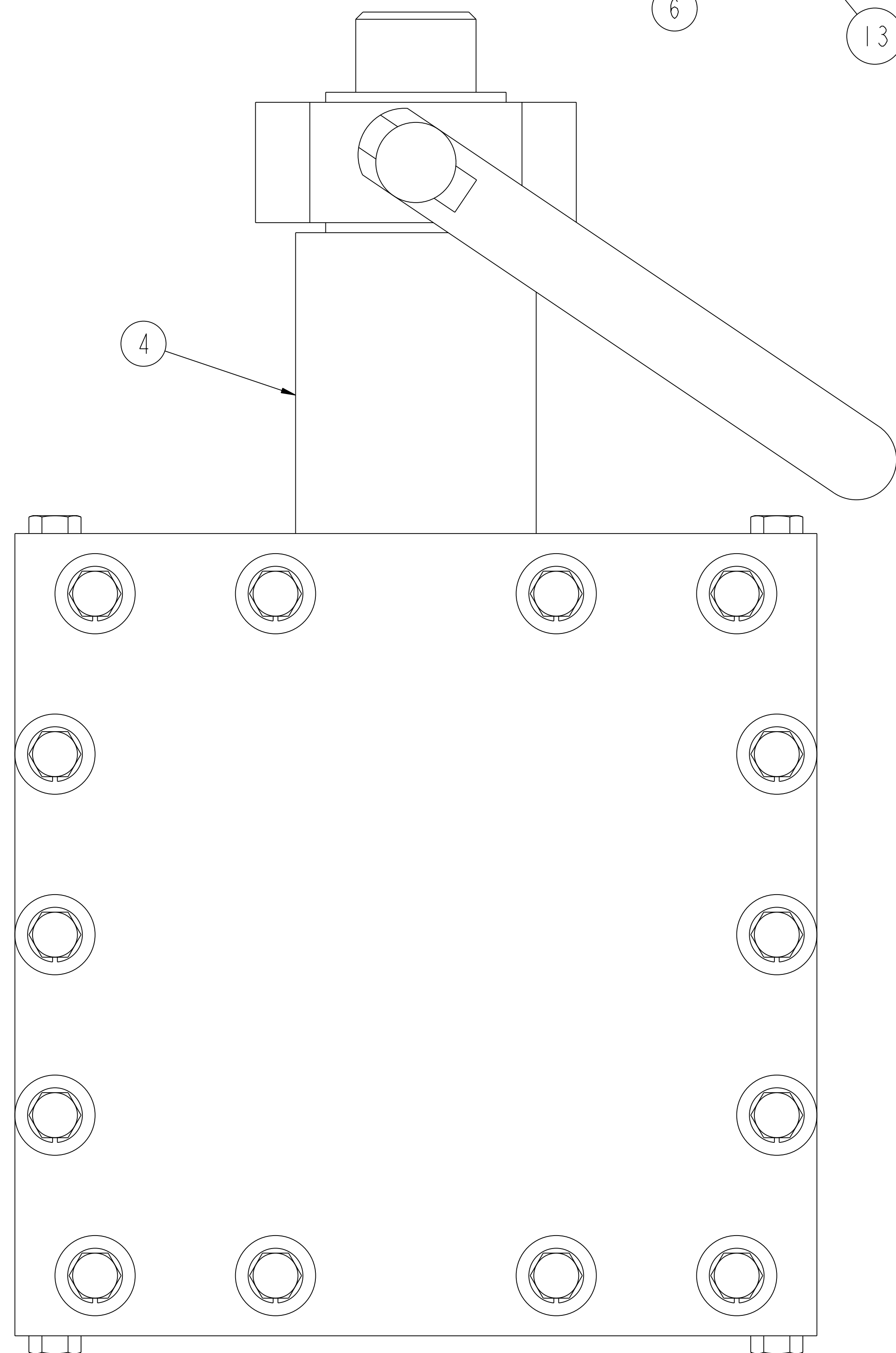
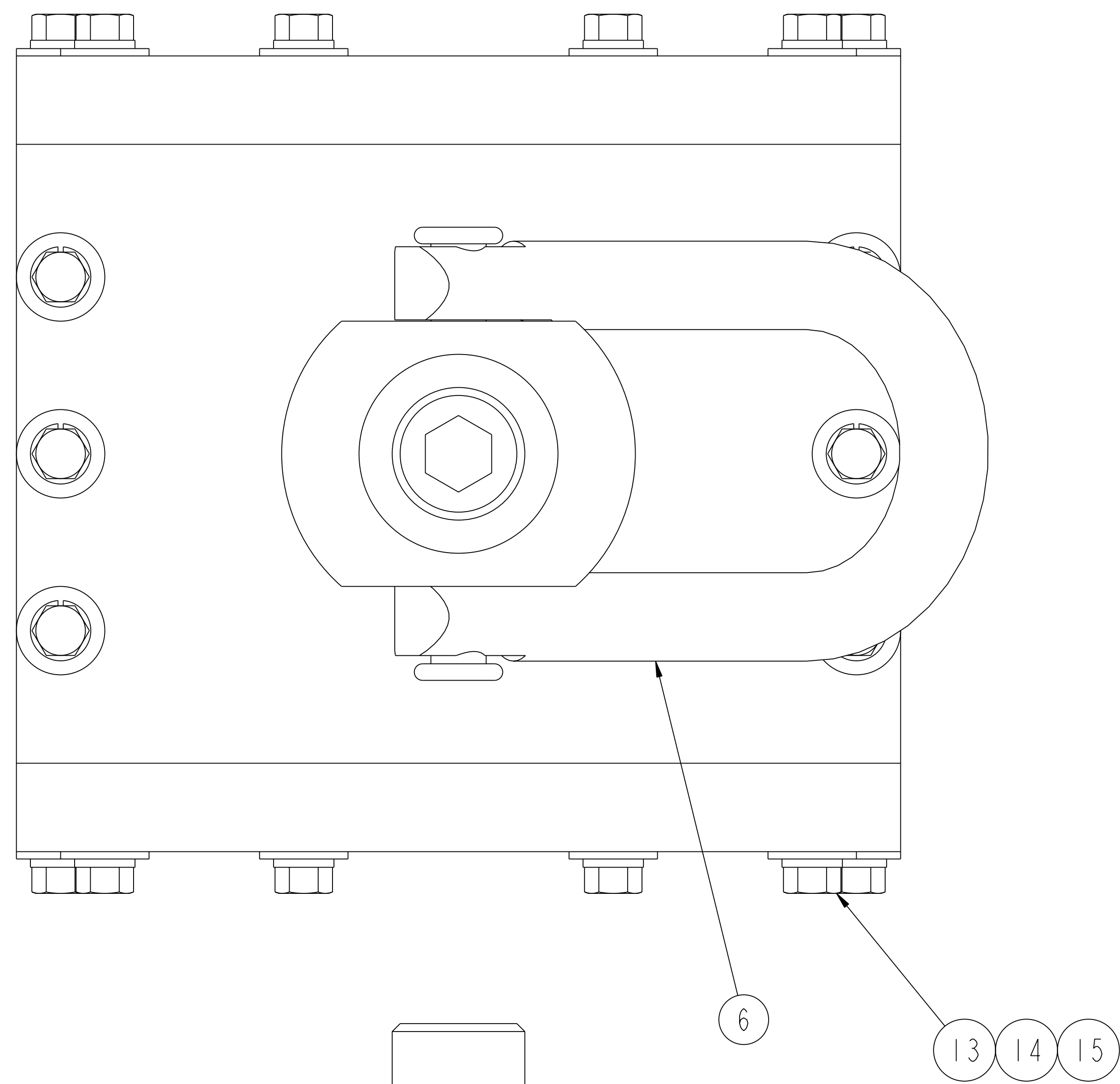


NO.	REVISION	BY	CH	SUP	APPROVED	DATE
1	REVISED PER ECN-	LM	TB	JS	T. BROWN	5-11-06



QTY	PART NO.	DESCRIPTION	MATERIAL	QTY RECD
2	19	SE184-009-6	FILLER PLATE	SEE DWG
1	18	COMM	1"-8UNC-2A x 2" LG HEX HD CAP SCREW	ASTM A325
1	17	COMM	1" SPLIT LOCK WASHER	C'STL - ZN PLT
1	16	COMM	1" FLAT WASHER	C'STL - ZN PLT
40	15	COMM	3/8-16UNC-2A x 2" LG HEX HD CAP SCR	ASTM A325
40	14	COMM	3/8 SPLIT LOCK WASHER	C'STL - ZN PLT
40	13	COMM	3/8 FLAT WASHER	C'STL - ZN PLT
3	12	COMM	#10-24UNC-2A x 1" LG HEX SCT CAP SCR	C'STL - ZN PLT
3	11	COMM	#10 SPLIT LOCK WASHER	C'STL - ZN PLT
3	10	COMM	#10 FLAT WASHER	C'STL - ZN PLT
1	9	COMM	#8-32UNC-2A x 1/2" LG HEX SCT CAP SCR	C'STL - ZN PLT
1	8	COMM	#6-32UNC-2A x 1/2" LG HEX SCT CAP SCR	C'STL - ZN PLT
1	7	COMM	LASER PEN POINTER - CLASS 111A	
1	6	COMM	HOIST RING - 10,000# CAP. MCMASTER-CARR #3145T34 OR EQUIV.	ALLOY STEEL
1	5	SE184-009-5	LASER POINTER MOUNTING FLANGE	SEE DWG
1	4	SE184-009-4	LIFTING CYLINDER	SEE DWG
2	3	SE184-009-3	LIFTING SIDE PLATE	SEE DWG
1	2	SE184-009-2	LIFTING TOP PLATE	SEE DWG
1	1	SE184-009-1	LIFTING BASE PLATE	SEE DWG
1		THIS DWG	HOIST RING MOUNT LIFTING ASSEMBLY W/ LASER POINTER	1

WEIGHT	193.9 lbs
MODEL NAME	SE184-008-01
WELDING ENGINEER	

RELEASE LEVEL: WIP
DWG VERSION NO: 1

COMPUTER GENERATED DRAWING DRAWING CHANGES NOT PERMITTED Pro E	CENTRAL FILES: UNLESS OTHERWISE SPECIFIED DIMENSIONS ARE IN INCHES MACHINE SURFACES BREAK SHARP EDGES .005/.020	PRINCETON PLASMA PHYSICS LABORATORY PRINCETON UNIVERSITY NATIONAL COMPACT STELLARATOR EXPERIMENT EXTERNAL FLUX LOOPS VACUUM VESSEL SUPPORT STAND FIXTURE ASSEMBLY HOIST RING MOUNT LIFTING ASSEMBLY WITH LASER POINTER		
DO NOT VERIFY INFORMATION BY SCALING DRAWING	TOLERANCES NON-CUMULATIVE DECIMAL-INCH FRACTIONS .XX +/- .030 .XXX +/- .005 ANGULAR +/- .015	DSN: L. MORRIS CHK: T. BROWN ENGR: T. BROWN SUPV: J. SIEGEL	3-29-06 3-29-06 3-29-06 3-29-06	DRAWING NO: SE184-008 SHEET 1 OF 1 REV 1

NCSX-SE184-008