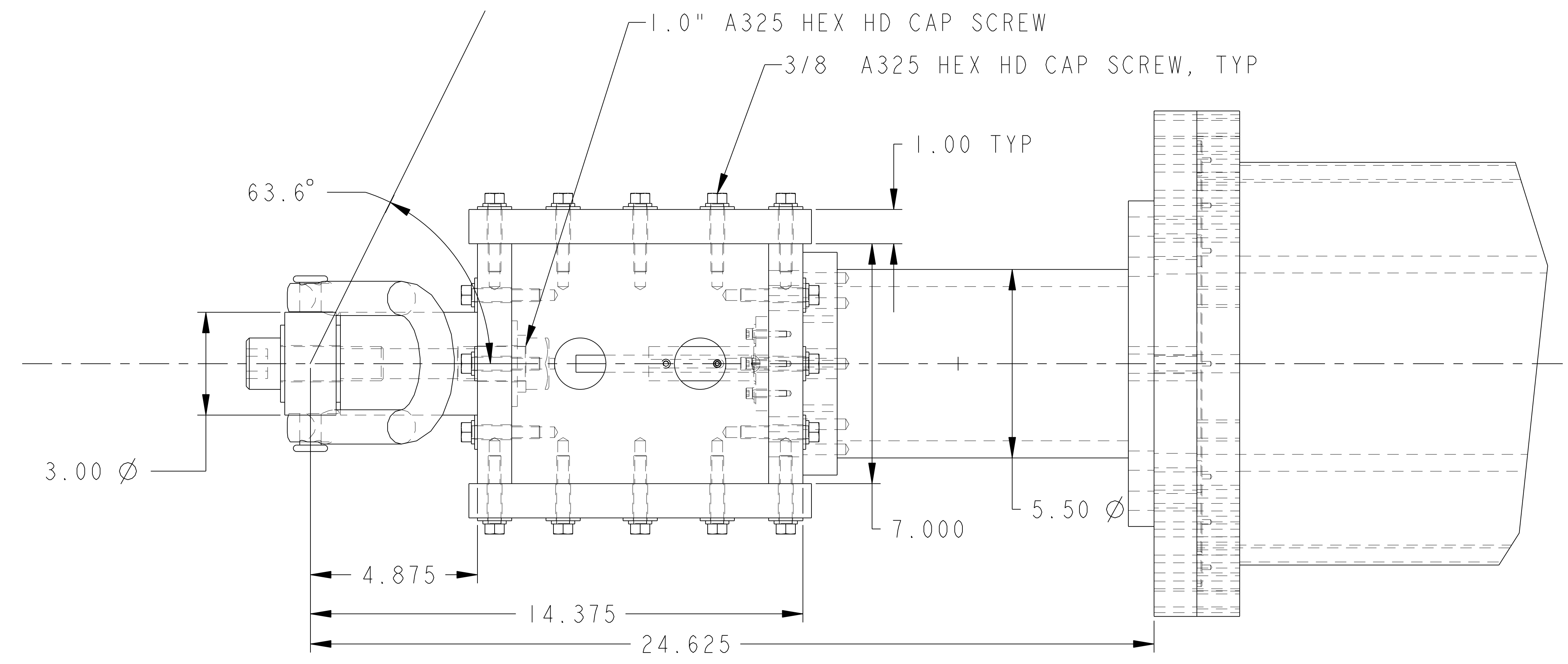
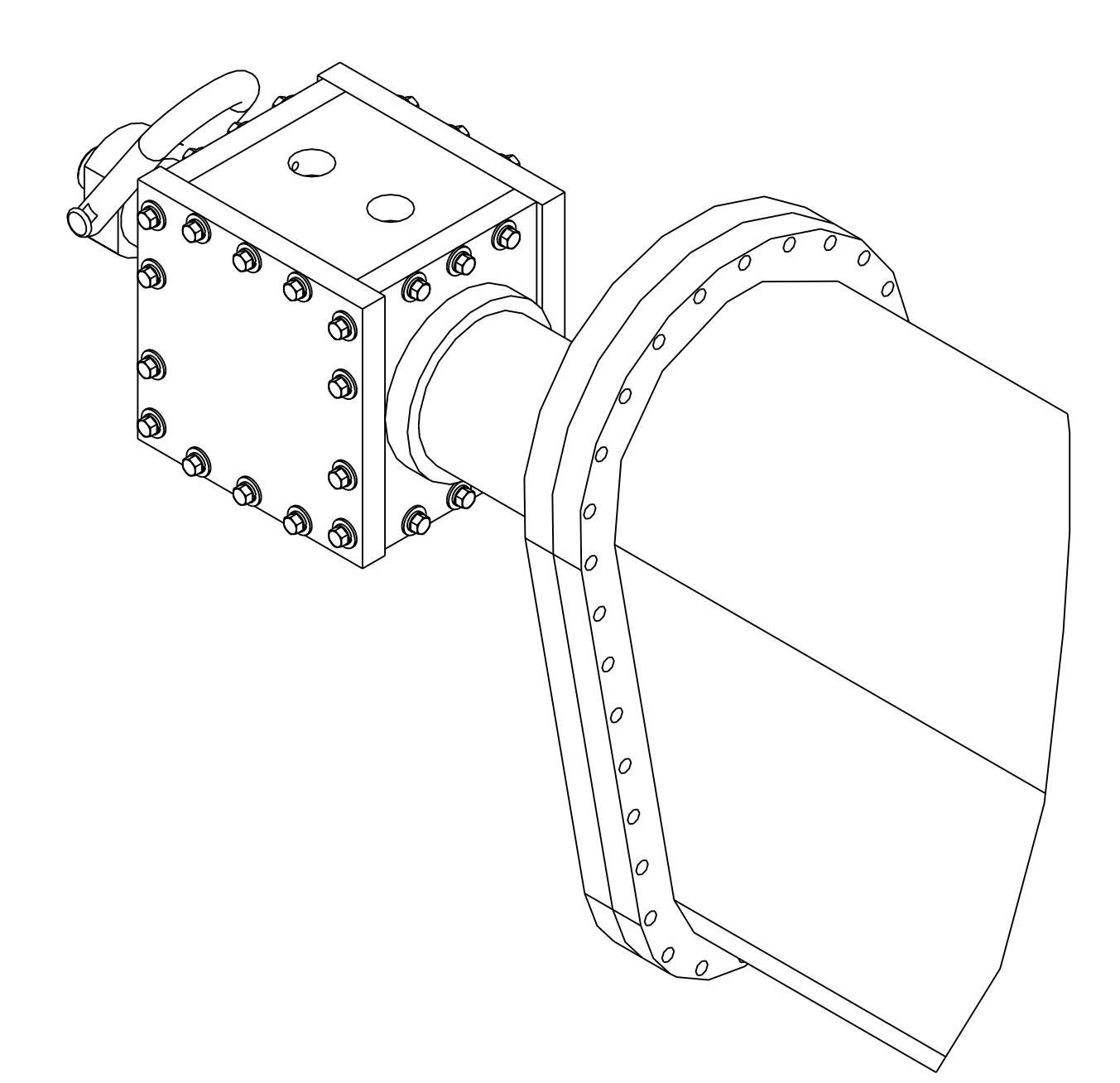
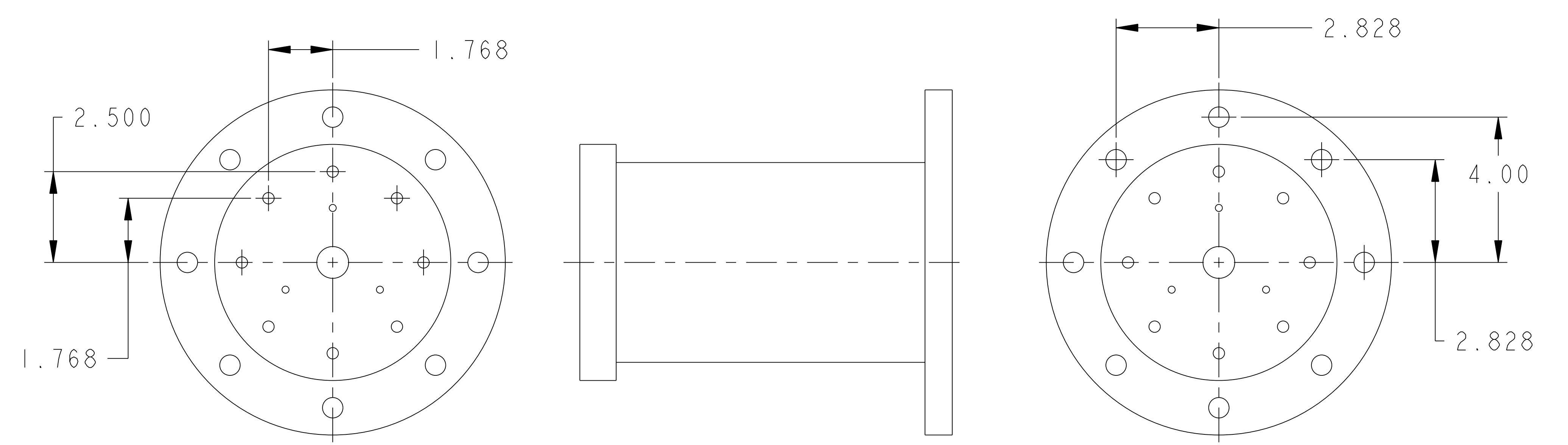
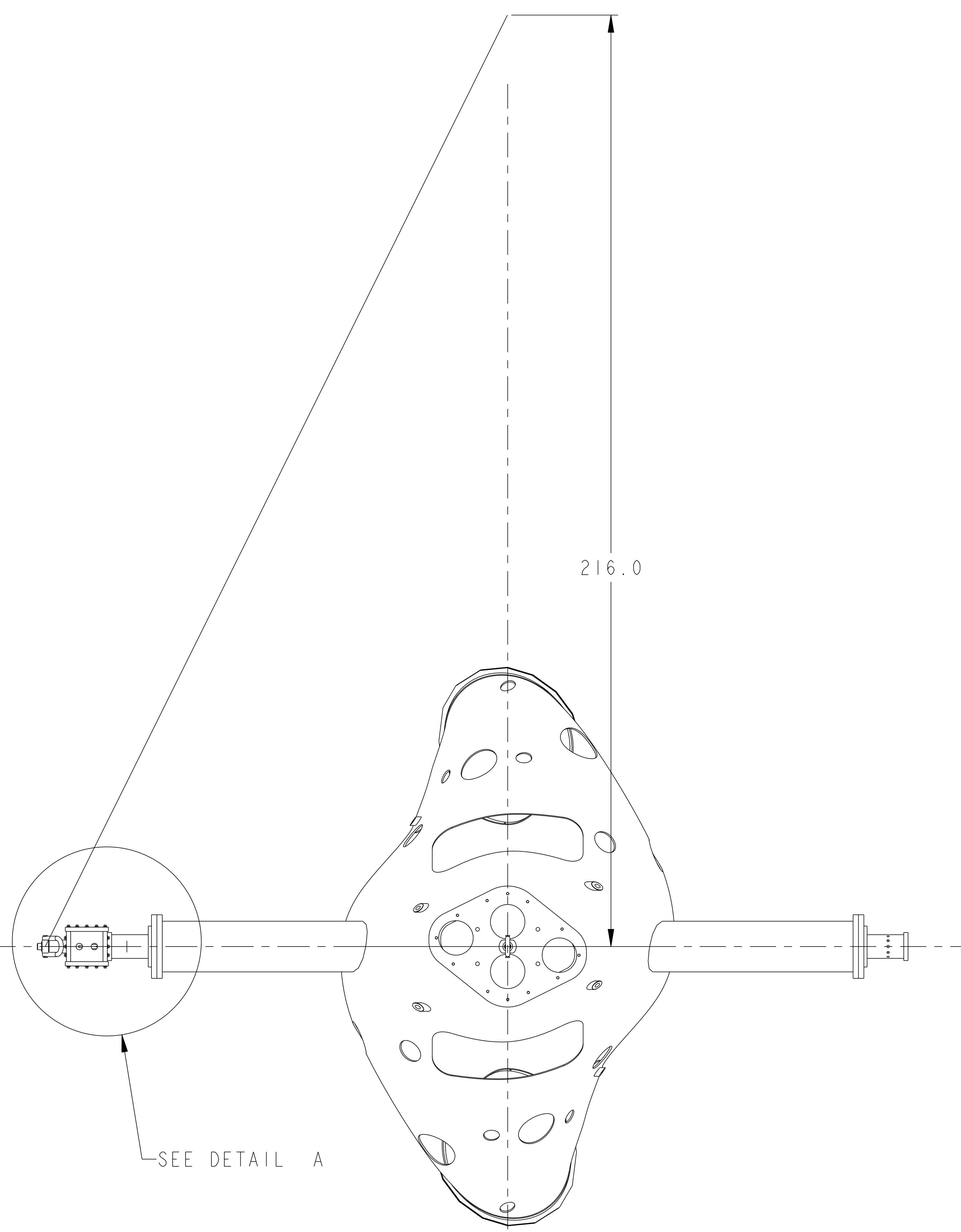


NO.	REVISION	BY	CH	SUP	APPROVED	DATE



DETAIL A
SCALE 0.500



SCALE 0.200

PART NO.	DRAWING NO	NOMENCLATURE OR DESCRIPTION	MATERIAL	QTY RECD
6	SE184_HOIST_RING	LIFTING RING - 10000# CAP.		1
5	SE184-054	NB PORT TEMPORARY COVER	ASTM A36	1
4	SE184-055	NB PORT TEMPORARY COVER SPACER	ALUM 6061-T6	1
3	LM_SE184-001	VACUUM VESSEL MODEL FOR SE184-001-01	--	1
2	SE184-008-01	HOIST RING MOUNT LIFTING ASSEMBLY WITH LASER POINTER	--	1
1	SE184-001-01	BASE MODEL FOR DWG SE184-001.DRW	--	1

PARTS LIST

COMPUTER GENERATED DRAWING MANUAL CHANGES NOT PERMITTED	CENTRAL FILES: UNLESS OTHERWISE SPECIFIED	PRINCETON PLASMA PHYSICS LABORATORY PRINCETON UNIVERSITY NATIONAL COMPACT STELLARATOR EXPERIMENT	
DO NOT VERIFY INFORMATION BY SCALING DRAWING	DIMENSIONS ARE IN INCHES MACHINE SURFACES UNLESS OTHERWISE SPECIFIED	VV HOIST MOUNT FITTING ANALYSIS	
Pro E	BREAK SHARP EDGES .005/.020	TOLERANCES NON-CUMULATIVE	DSN: T BROWN
WELDING ENGINEER	DECIMAL-INCH FRACTIONS	CHK: ENGR: T BROWN	DRAWING NO:
RELEASE LEVEL: Fabrication DWG VERSION NO: 0	NEXT ASSEMBLY	ENGR: T BROWN	STB-VV HOIST ANALYSIS
		SUPV:	SHEET 1 OF 1 REV

NCSX-STB-VV-HOIST-ANALYSIS